

Office | For Sublease

CBRE

# 200 West Mercer Street Seattle, Washington

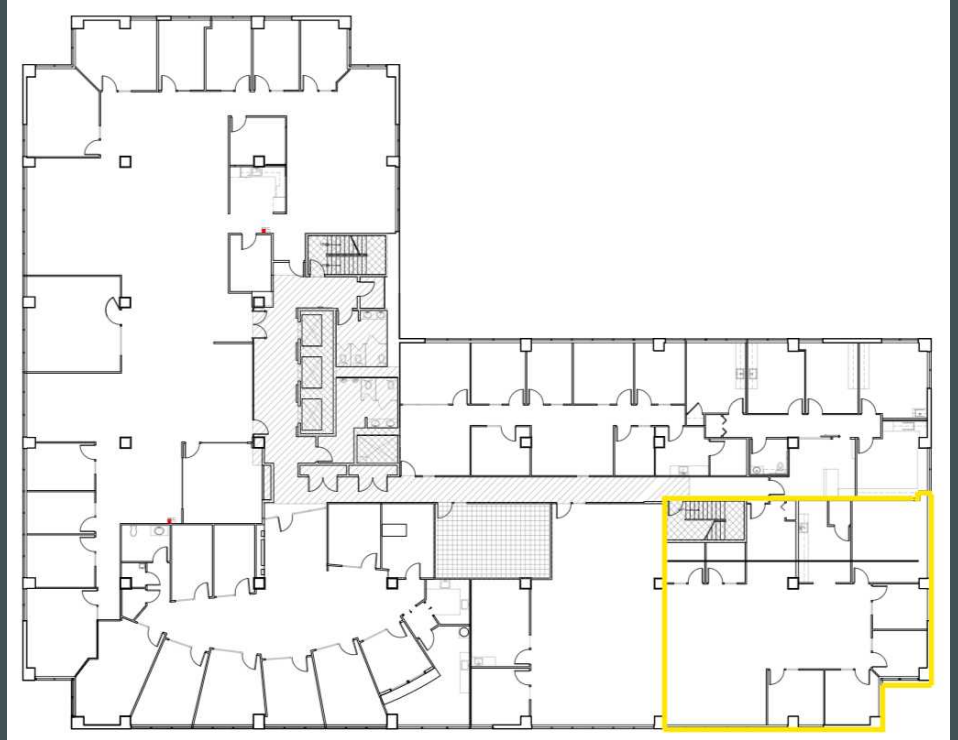
Suite E210

[www.cbre.com/bellevue](http://www.cbre.com/bellevue)



# Space Details

- + 2,637 RSF
- + Immediately available
- + Master Lease Expiration Date: June 30, 2029
- + Covered parking with EV charging stations available
- + **Building Amenities:** Bike storage, showers and building conference room
- + Nearby Amenities include 20+ restaurants and breweries, fitness studios, and iconic destinations such as Seattle Center, Climate Pledge Arena, and MoPOP.
- + Convenient location with immediate access to I-5 N&S, and Downtown Seattle



## Contact Us

**Brian Biege**

Executive Vice President  
+1 425 462 6914  
brian.biege@cbre.com

**Bryan Oliver**

Senior Vice President  
+1 425 749 9903  
bryan.oliver@cbre.com

**Jacob Hamlin**

First Vice President  
+1 425 319 7252  
jacob.hamlin@cbre.com

**CBRE, Inc.**

929 108th Ave NE  
Suite 700  
Bellevue, WA 98004

© 2026 CBRE, Inc. All rights reserved. This information has been obtained from sources believed reliable, but has not been verified for accuracy or completeness. You should conduct a careful, independent investigation of the property and verify all information. Any reliance on this information is solely at your own risk. CBRE and the CBRE logo are service marks of CBRE, Inc. All other marks displayed on this document are the property of their respective owners, and the use of such logos does not imply any affiliation with or endorsement of CBRE. Photos herein are the property of their respective owners. Use of these images without the express written consent of the owner is prohibited. DW\_06.16.2026