

FOR LEASE

SOUTHCENTER  
PLAZA

14900 Interurban Ave S  
Tukwila, WA

SUITES AVAILABLE

Suite 142	3,470 RSF	Available Now
Suite 143	1,234 RSF	8/1/26

*can be combined to make 4,704 RSF*

HIGHLIGHTS

- Beautiful landscaping offers a park-like setting
- Serene Views of Green River and Fort Dent Park
- Ideal for bike commuters/riders, near the Green River Trail and Lake to Sound Trail
- Ample free parking surrounding the building provides convenient access via the 3 main building entries
- Convenient Metro bus access on main arterial linking Seattle to the South King County (Route 150)
- Tenants can utilize a City of Seattle address
- **Rental Rate:** \$28.50 per RSF per Year, Fully Serviced



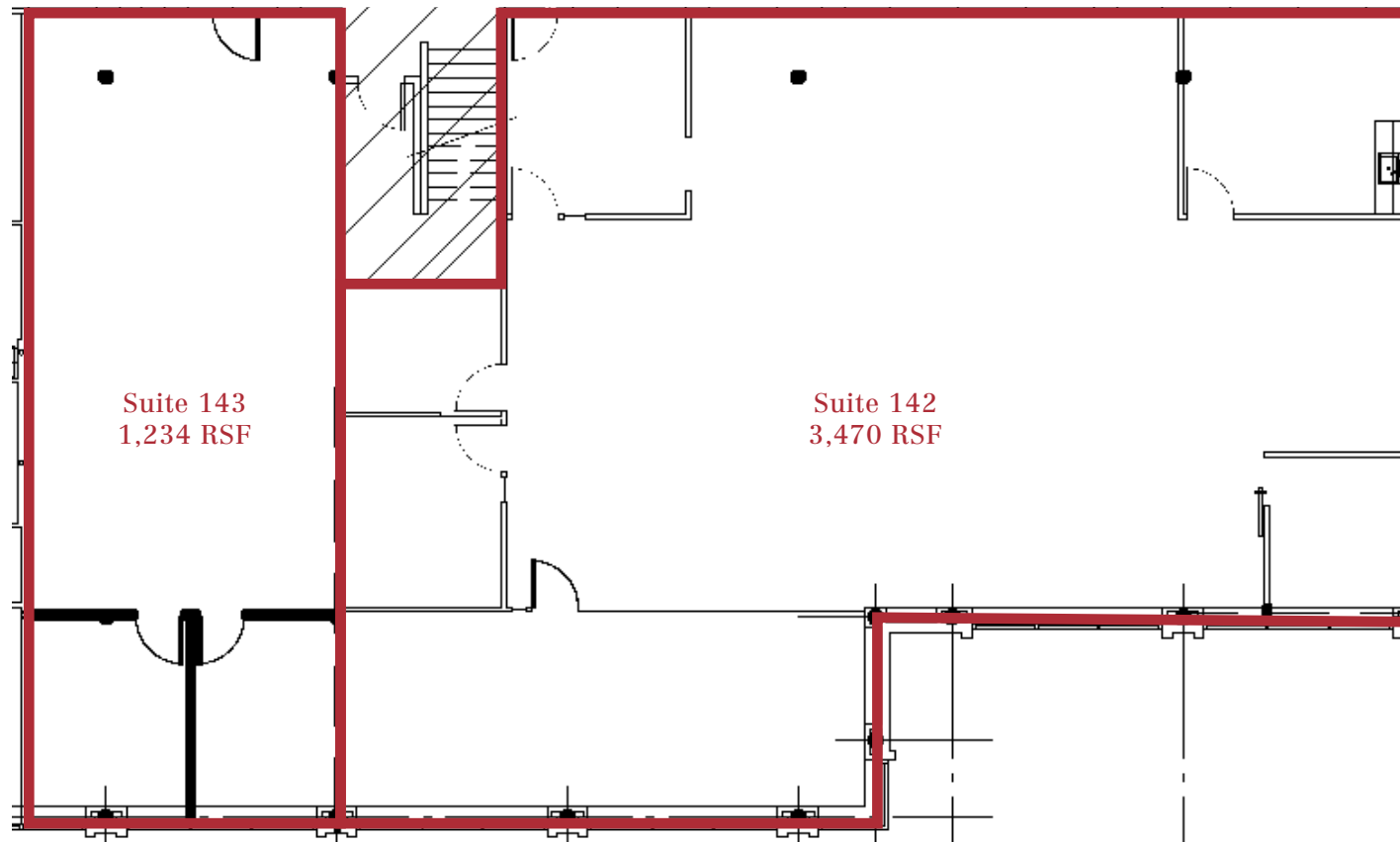
For more information:

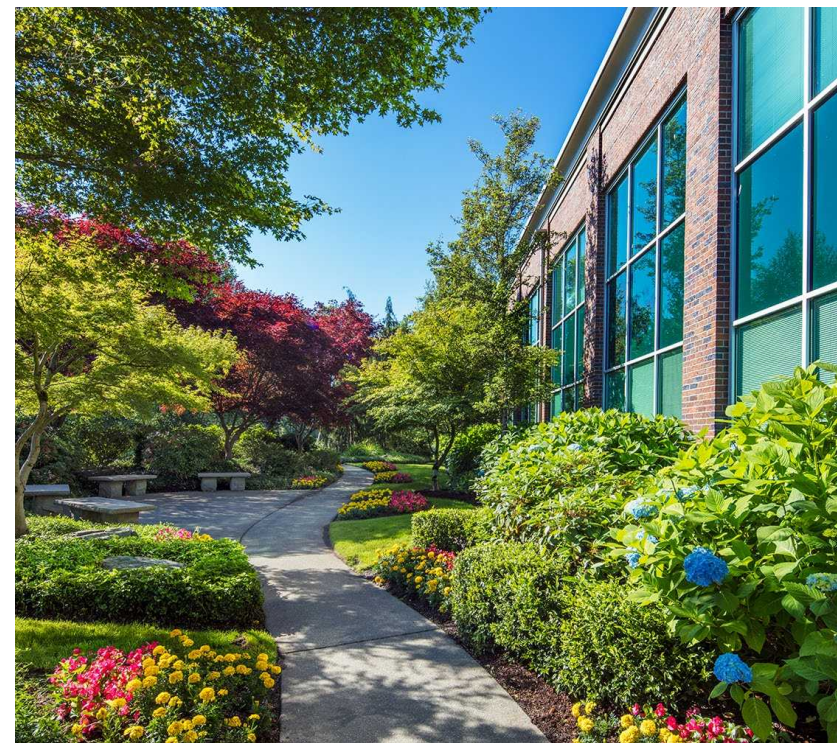
**Mike George**  
+1 425 586 5618  
mgeorge@nai-psp.com

**Tony Rona**  
+1 425 586 5634  
trona@nai-psp.com

# CURRENT AVAILABLE SUITES ON 1ST FLOOR

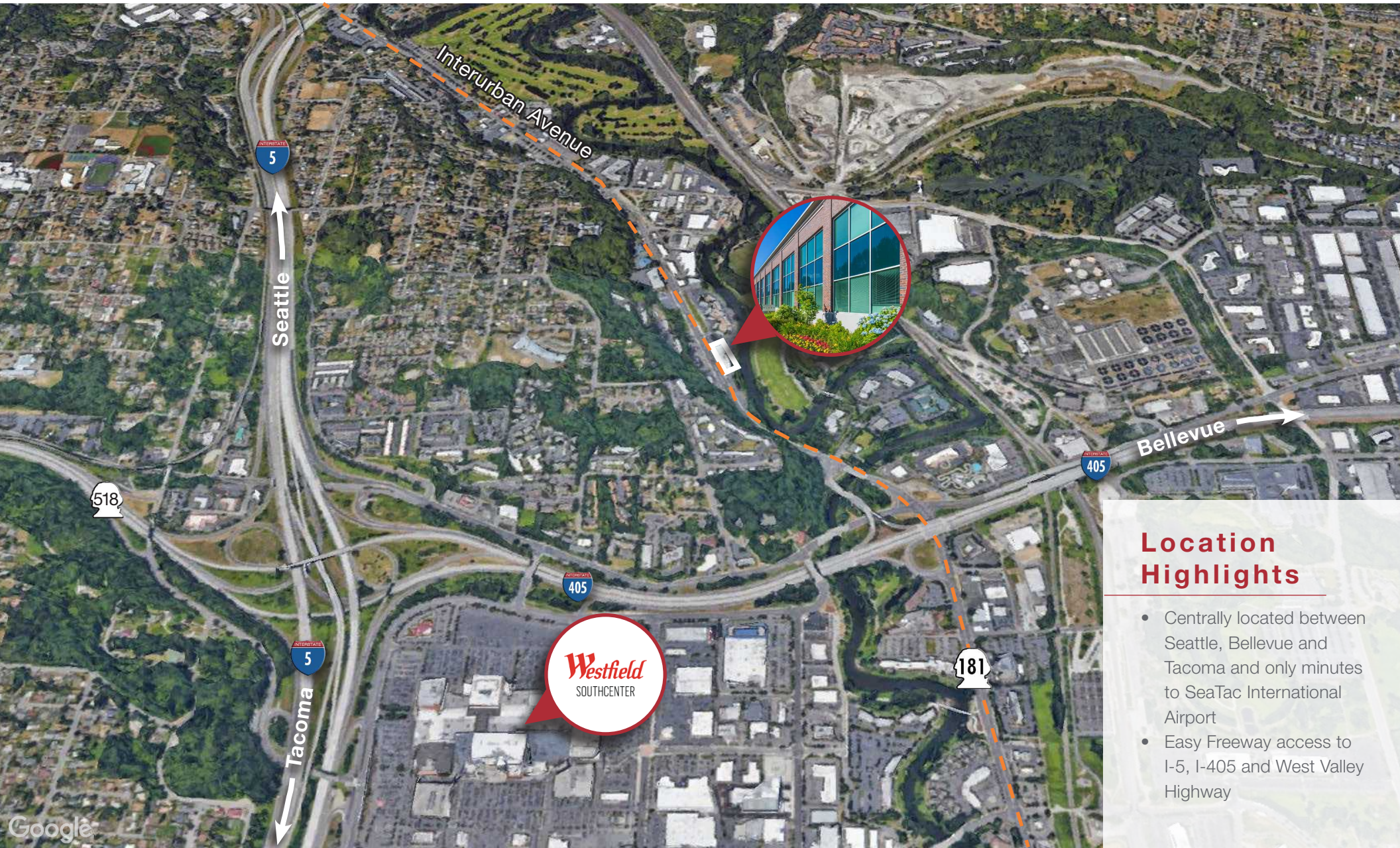
SUITES CAN BE COMBINED TO MAKE 4,704 RSF





THE INFORMATION CONTAINED HEREIN HAS BEEN GIVEN TO US BY THE OWNER OF THE PROPERTY OR OTHER SOURCES WE DEEM RELIABLE, WE HAVE NO REASON TO DOUBT ITS ACCURACY, BUT WE DO NOT GUARANTEE IT. ALL INFORMATION SHOULD BE VERIFIED PRIOR TO PURCHASE OR LEASE.

# SOUTHCENTER PLAZA – 14900 INTERURBAN AVE S, TUKWILA, WA



## Location Highlights

- Centrally located between Seattle, Bellevue and Tacoma and only minutes to SeaTac International Airport
- Easy Freeway access to I-5, I-405 and West Valley Highway