

**MEDICAL/PROFESSIONAL OFFICE SPACE FOR LEASE**



**8097 HARBORVIEW RD**

**BLAINE, WASHINGTON**



**ABUNDANT ON-SITE PARKING**



**1.23  
ACRE PARCEL**



**600-3,946 SF  
FLEXIBLE  
FLOORPLAN  
CONFIGURATIONS**



**EXCEPTIONAL  
REGIONAL  
CONNECTIVITY**

# 8097 HARBORVIEW RD | \$18/SF/YEAR + NNN



JEFF HOPWOOD  
HANNAH CANO



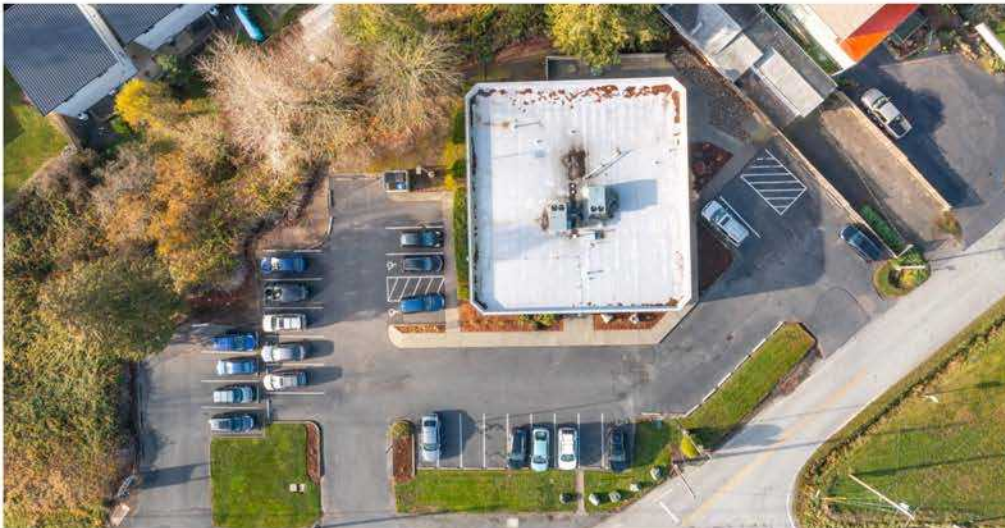
360.303.8693  
360.296.7352



jeffhopwood@windermere.com  
hannah@windermere.com



# PROPERTY HIGHLIGHTS



- ±3,946 SF professional office/medical space available for lease
- Situated on a ±1.23-acre parcel in Blaine
- Former medical clinic with an efficient, move-in-ready layout
- Reception area and dedicated waiting room
- Multiple private offices and exam rooms
- Conference room and administrative support areas
- Flexible floor plan adaptable to a variety of users
- Ample on-site parking for employees and visitors
- Professional setting with convenient access and visibility

JEFF HOPWOOD  
HANNAH CANO



360.303.8693  
360.296.7352



jeffhopwood@windermere.com  
hannah@windermere.com



# LEASING OPPORTUNITY



- Ideal for medical, healthcare, and wellness providers
- Accommodates professional office and administrative users
- Suitable for educational and training-related operations
- RC zoning allows for a broad range of commercial uses
- Opportunity to occupy a well-established former healthcare facility
- Functional layout minimizes tenant improvement costs
- Flexible space configuration to meet a variety of operational needs
- Strategic Blaine location serving both local and regional clientele
- Rare opportunity to lease a standalone professional building with abundant parking

JEFF HOPWOOD  
HANNAH CANO



360.303.8693  
360.296.7352



jeffhopwood@windermere.com  
hannah@windermere.com



# OFFICE + MEDICAL SPACE



JEFF HOPWOOD  
HANNAH CANO



360.303.8693  
360.296.7352



jeffhopwood@windermere.com  
hannah@windermere.com



# 8097 HARBORVIEW RD BLAINE, WA

- U.S.–Canada gateway location
- Growing year-round population base
- Expanding healthcare and professional service demand
- Regional access via Interstate 5
- Strategic position between Bellingham and Metro Vancouver
- Limited inventory of quality standalone professional office buildings



JEFF HOPWOOD



360.303.8693

HANNAH CANO

360.296.7352

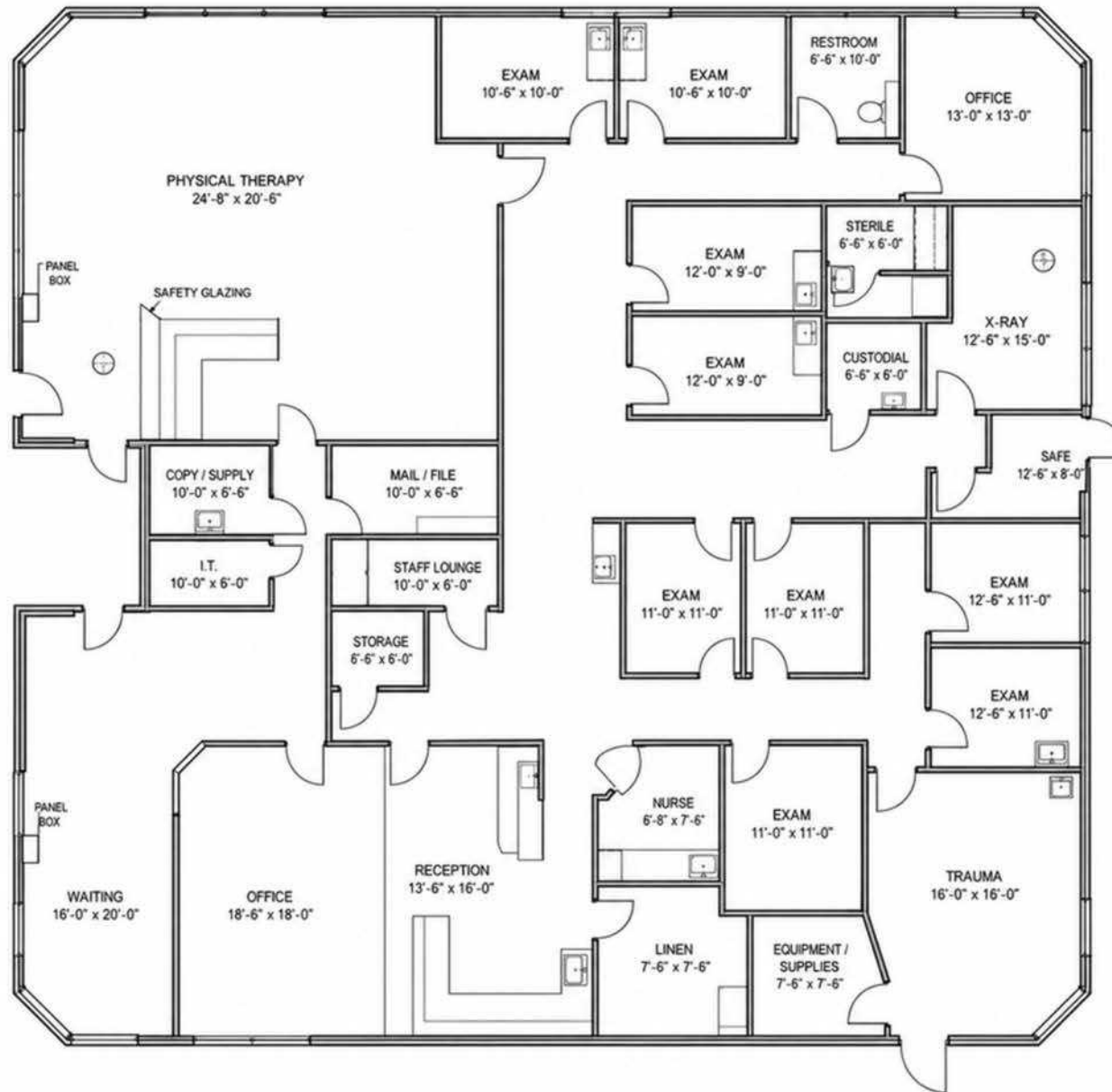


[jeffhopwood@windermere.com](mailto:jeffhopwood@windermere.com)

[hannah@windermere.com](mailto:hannah@windermere.com)



# FLOORPLAN



JEFF HOPWOOD  
HANNAH CANO



360.303.8693  
360.296.7352

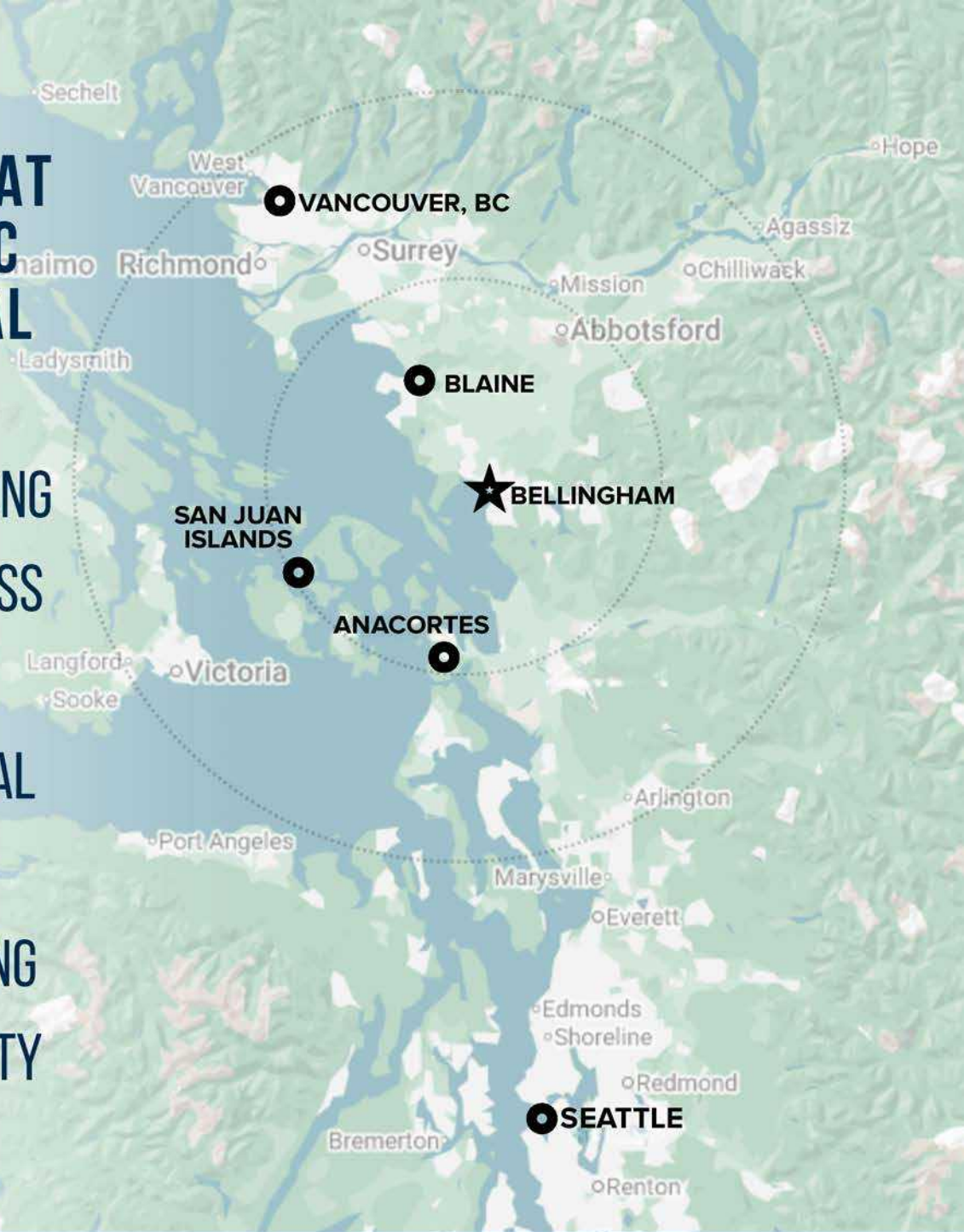


jeffhopwood@windermere.com  
hannah@windermere.com



# BLAINE: STRATEGICALLY POSITIONED AT THE GATEWAY TO THE PACIFIC NORTHWEST'S INTERNATIONAL TRADE CORRIDOR.

WITH A GROWING POPULATION, STRONG  
REGIONAL CONNECTIVITY, AND ACCESS  
TO BOTH U.S. AND CANADIAN  
MARKETS, BLAINE PROVIDES AN IDEAL  
SETTING FOR MEDICAL AND  
PROFESSIONAL OFFICE USERS SEEKING  
LONG-TERM GROWTH AND COMMUNITY  
PRESENCE.



JEFF HOPWOOD  
HANNAH CANO



360.303.8693  
360.296.7352



jeffhopwood@windermere.com  
hannah@windermere.com



# 8097 HARBORVIEW ROAD

Capitalize on a growing North Whatcom County market with exceptional access, strong demographics, and proximity to the U.S.–Canada border.



515 W. Bakerview Rd.  
Bellingham, WA 98226  
[www.wrecommercial.com](http://www.wrecommercial.com)

## CONTACT

Jeff Hopwood  
Broker  
(360) 303-8693  
[jeffhopwood@windermere.com](mailto:jeffhopwood@windermere.com)

Hannah Cano  
Managing Broker  
(360) 296-7352  
[Hannah@windermere.com](mailto:Hannah@windermere.com)