

For Lease or Sale

6411 20th St E

FIFE, WA 98424



AARON ROSEN
253 203 1319
arosen@nai-psp.com

JOHN PAVOLKA
253 203 1327
jpavolka@nai-psp.com

This image has been modified from its original form

NAI Puget Sound
Properties



Property Highlights

ADDRESS	6411 20th St E Fife, WA 98424
LOT SIZE	137,369 SF (3.98 Acres)
BUILDING SIZE	41,543 SF Total 7,749 SF Showroom 33,262 SF Service Garage
SERVICE BAYS W/ HOIST	20
PARCEL NUMBER	0420071150
ZONING	City Center South (<i>CCS City Of Fife</i>)

PROPERTY AMENITIES	Automotive Dealership Showroom Service Center Parts Department EV Charging stations Car Wash Paint Booth / Body Shop I-5 Frontage Sprawling Sales Office
---------------------------	--



This image has been modified from its original form

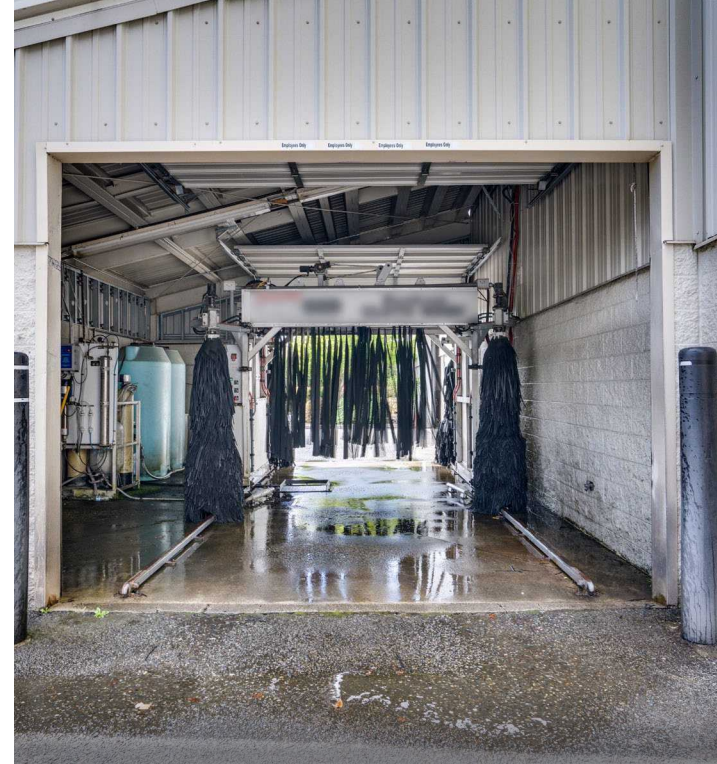


This image has been modified from its original form



This image has been modified from its original form



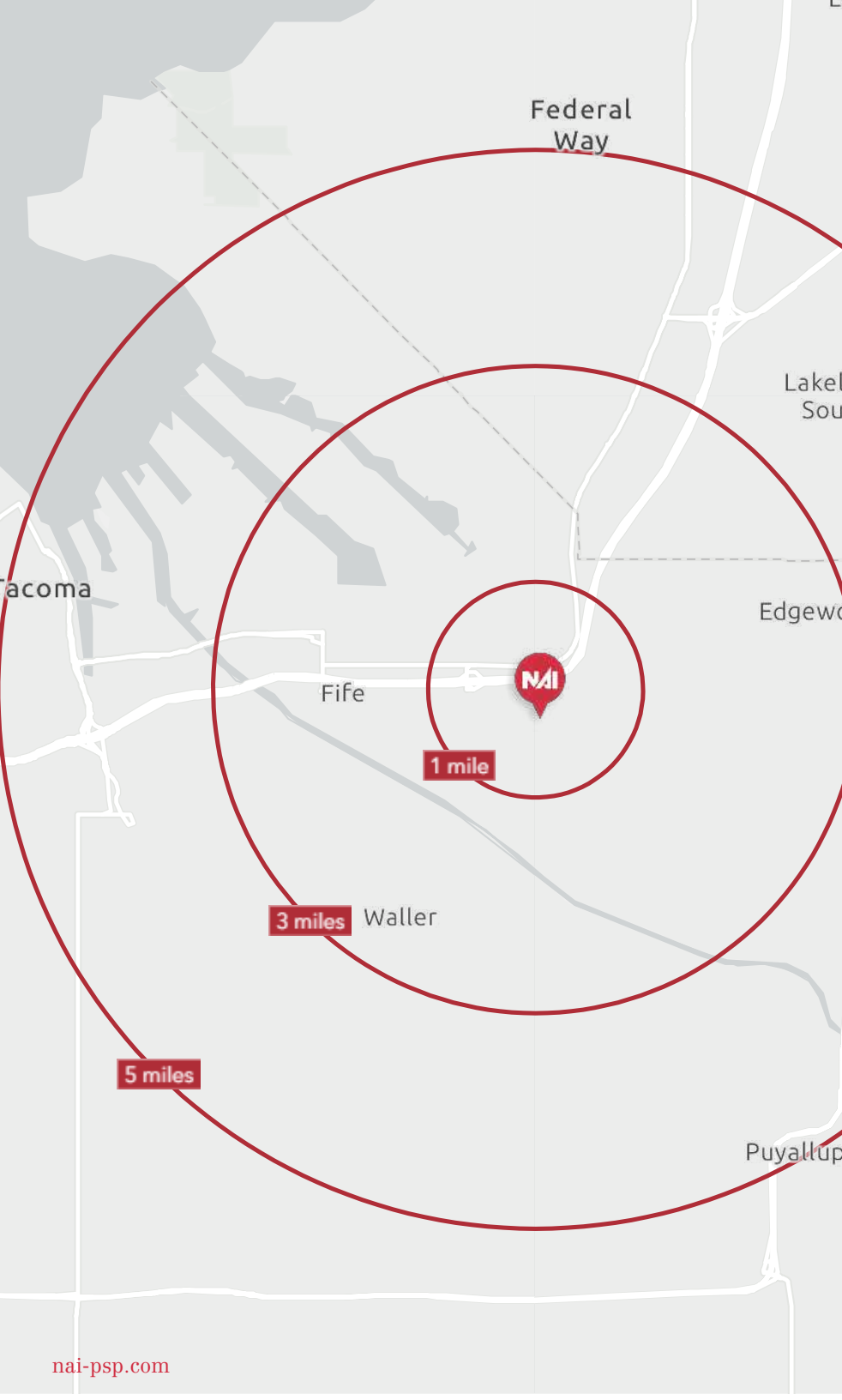


Nearby Amenities



Mercedes-Benz





Demographic Overview

	1 MILES	3 MILES	5 MILES
Population	7,451	52,182	200,983
2030 Population	7,664	54,744	208,052
Households	2,982	19,138	74,331
Median HH Income	\$94,971	\$106,891	\$95,122
Avg. HH Income	\$112,866	\$132,728	\$117,759

6411 20th St E

FIFE, 98424

EXCLUSIVELY LISTED BY:

AARON ROSEN

253 203 1319

arosen@nai-psp.com

JOHN PAVOLKA

253 203 1327

jpavolka@nai-psp.com

This image has been modified from its original form

NAI Puget Sound
Properties

THE INFORMATION CONTAINED HEREIN HAS BEEN GIVEN TO US BY THE OWNER OF THE PROPERTY OR OTHER SOURCES WE DEEM RELIABLE. WE HAVE NO REASON TO DOUBT ITS ACCURACY, BUT WE DO NOT GUARANTEE IT. ALL INFORMATION SHOULD BE VERIFIED PRIOR TO PURCHASE OR LEASE.