

901 BUILDING

901 S I STREET, TACOMA, WA 98405



LISTING INFORMATION

SUITE 102 | 1,729 SF

- LEASE RATE:** \$15.00 SF / YR + \$9.18 SF / YR (NNN)
- PARKING:** 3 Surface Spaces (at no charge)
- OVERVIEW:** First floor office suite with three private offices, open area for cubes or reception, kitchenette. Two access points and full HVAC.

SUITE 202 | 1,400 SF

- LEASE RATE:** \$15.00 SF / YR + \$9.18 SF / YR (NNN)
- PARKING:** 3 Surface Spaces (at no charge)
- OVERVIEW:** Second floor office suite with three private offices, open area for cubes or reception. New paint and carpet, kitchenette, full HVAC. Two access points. Restroom in common area.

CONTACT

VANESSA HERZOG, SIOR, CCIM

vherzog@lee-associates.com
D 253.444.3025

SIMRAN KAUR

skaur@lee-associates.com
D 253.238.2844



HIGHLIGHTS

- f Onsite parking
- f Building has full security systems, fencing and daily security patrol.
- f Walking distance to Pierce County Superior Court and Tacoma Municipal courthouse.
- f Common area restrooms, lobby and conference room.

901 BUILDING

901 S I STREET, TACOMA, WA 98405

AERIAL MAP



CONTACT

VANESSA HERZOG, SIOR, CCIM

vherzog@lee-associates.com

D 253.444.3025

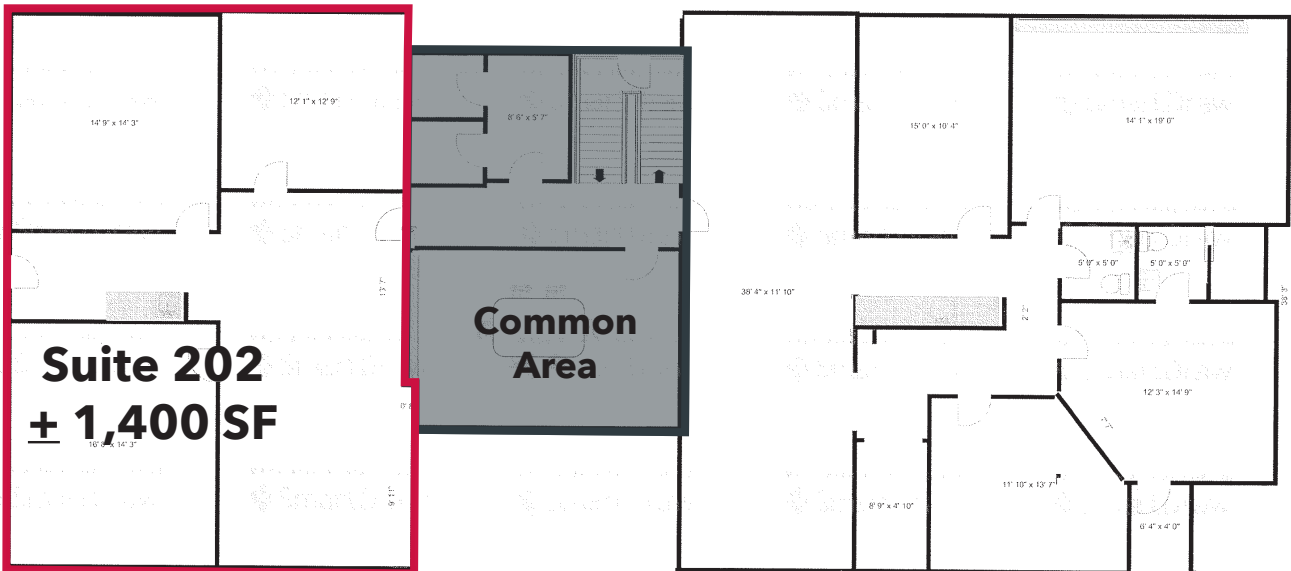
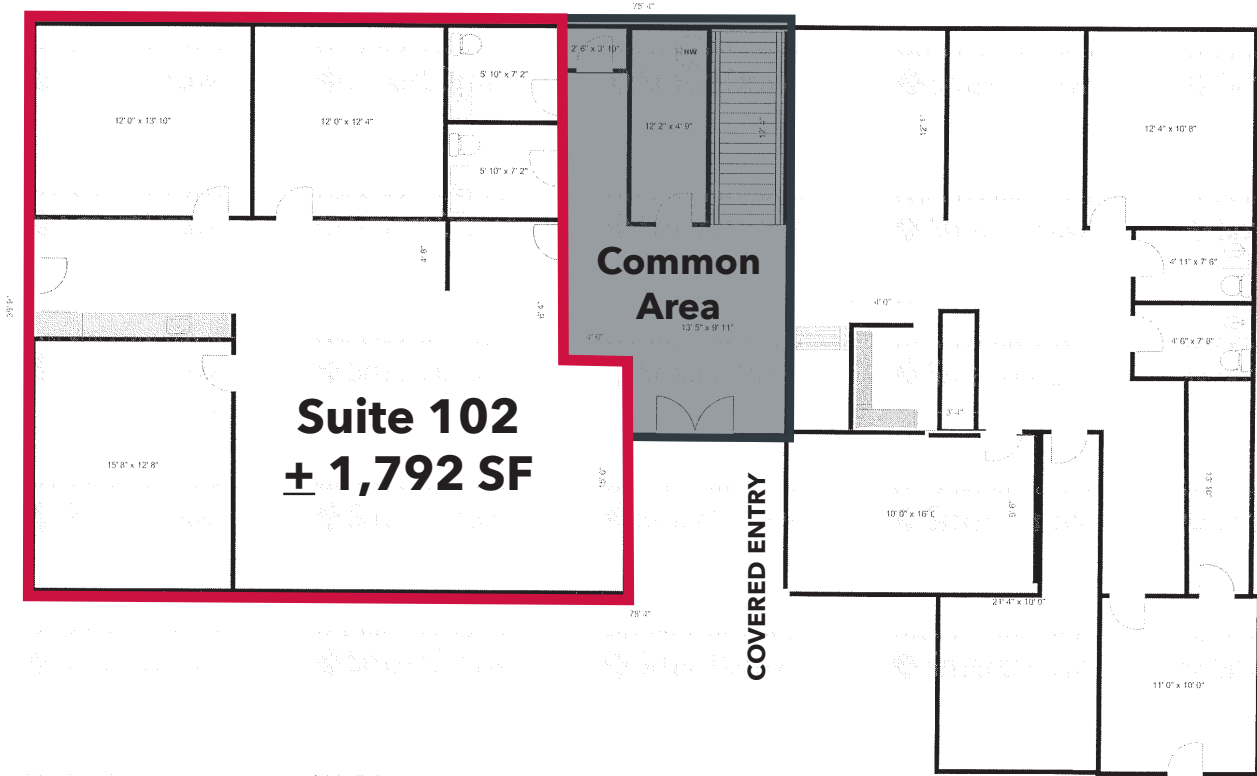
SIMRAN KAUR

skaur@lee-associates.com

D 253.238.2844

All information furnished regarding property for sale, rental or financing is from sources deemed reliable, but no warranty or representation is made to the accuracy thereof and same is submitted to errors, omissions, change of price, rental or other conditions prior to sale, lease or financing or withdrawal without notice. No liability of any kind is to be imposed on the broker herein.

FLOOR PLANS



CONTACT

VANESSA HERZOG, SIOR, CCIM

vherzog@lee-associates.com

D 253.444.3025

SIMRAN KAUR

skaur@lee-associates.com

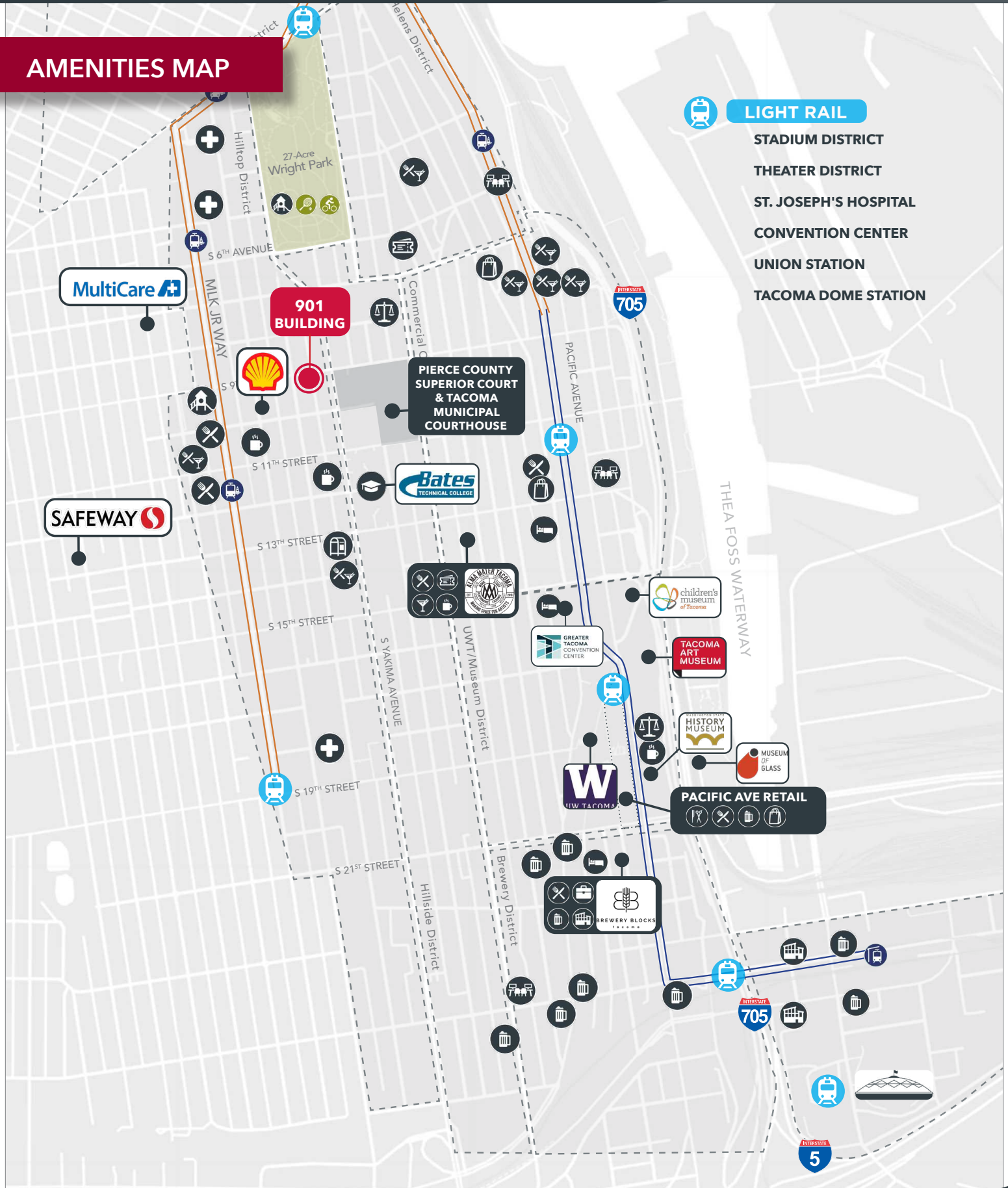
D 253.238.2844

All information furnished regarding property for sale, rental or financing is from sources deemed reliable, but no warranty or representation is made to the accuracy thereof and same is submitted to errors, omissions, change of price, rental or other conditions prior to sale, lease or financing or withdrawal without notice. No liability of any kind is to be imposed on the broker herein.

901 BUILDING

901 S I STREET, TACOMA, WA 98405

AMENITIES MAP



- LIGHT RAIL**
- STADIUM DISTRICT
 - THEATER DISTRICT
 - ST. JOSEPH'S HOSPITAL
 - CONVENTION CENTER
 - UNION STATION
 - TACOMA DOME STATION