

DAVIS COMMERCE CENTER

22737 72nd Ave S, Suite C-105 Kent, WA 98032

Available July 1, 2026

Warehouse/Flex Space



Property Specifications

- 2,621 SF Shell
- 974 SF Office
- 12' Clear Height
- 1 Grade Level Door
- New Finishes & Fixtures
- Office HVAC & LED Lighting
- 200 Amps 120/208 Volt 3-Phase Power
- Bonus Storage Mezzanine

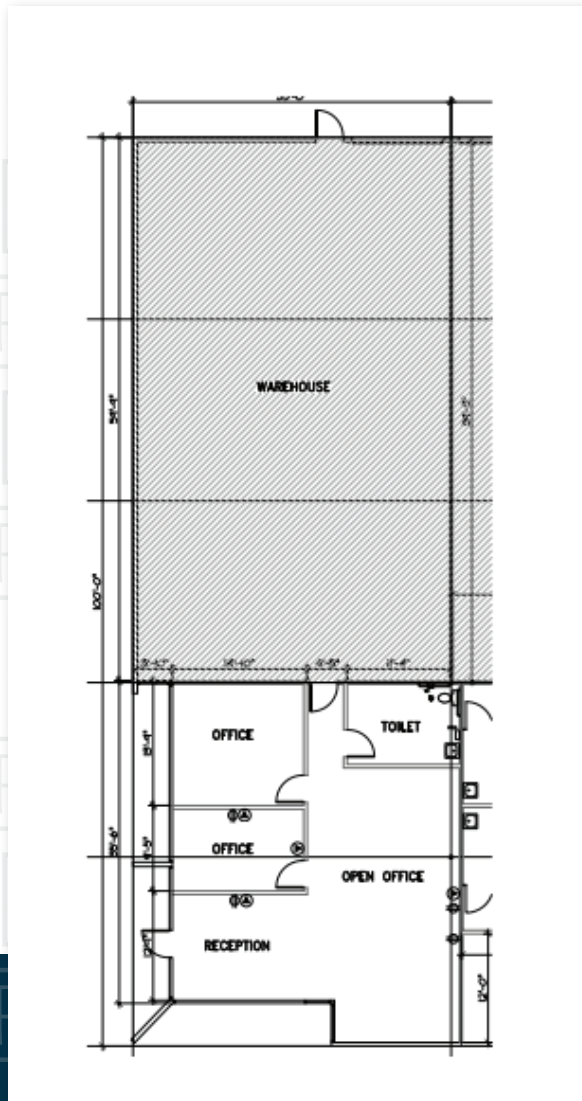
Property Features

- High Visibility to 228th Street
- Excellent freeway access to Highway 167 & I-5
- Monitored Video Surveillance & Security



DAVIS COMMERCE CENTER

22737 72nd Ave S, Suite C-105 Kent, WA 98032



Contact Kidder Matthews for more info:

Travis Stanaway
206-248-6526
travis.stanaway@kidder.com

Dane Dahline
206-248-6519
dane.dahline@kidder.com

Lisa Rowe
206-777-5122
lisar@davispropertiesllc.com

The information provided in this document should be independently verified on any material matter represented herein.