

FOR LEASE

# COMMERCIAL BUILDING

145 E STUART ROAD, BELLINGHAM, WA 98226



VARIETY OF POTENTIAL COMMERCIAL USES!



Listing #: 10886502



The information supplied herein is from sources we deem reliable. It is provided without any representation, warranty or guarantee, expressed or implied as to its accuracy. Prospective Buyer or Tenant should conduct an independent investigation and verifications of all matters deemed to be material including but not limited to statements of income and expenses. Consult your attorney or accountant or other professional advisors.

145 E STUART ROAD, BELLINGHAM, WA



EXCLUSIVELY LISTED BY:



MULJAT GROUP  
COMMERCIAL  
MULTI-FAMILY · RETAIL · INDUSTRIAL · OFFICE

Troy C. Muljat  
360.820.2000  
troy@muljat.com

Megan McLeod  
360.815.3470  
megan@muljat.com

# OFFERING SUMMARY

## OFFERING OVERVIEW

---

**2,100 - 7,853 SF +/-**  
Total Space Available

---

**\$23.00 /SF /YR**  
Base Rent

---

**\$5.00 /SF /YR**  
Estimated NNNs

---

**\$4,900 - \$18,324**  
Estimated Monthly Rent  
(Base Rent + NNNs)

The information supplied herein is from sources we deem reliable. It is provided without any representation, warranty or guarantee, expressed or implied as to its accuracy. Prospective Buyer or Tenant should conduct an independent investigation and verifications of all matters deemed to be material including but not limited to statements of income and expenses. Consult your attorney or accountant or other professional advisors.

145 E STUART ROAD, BELLINGHAM, WA

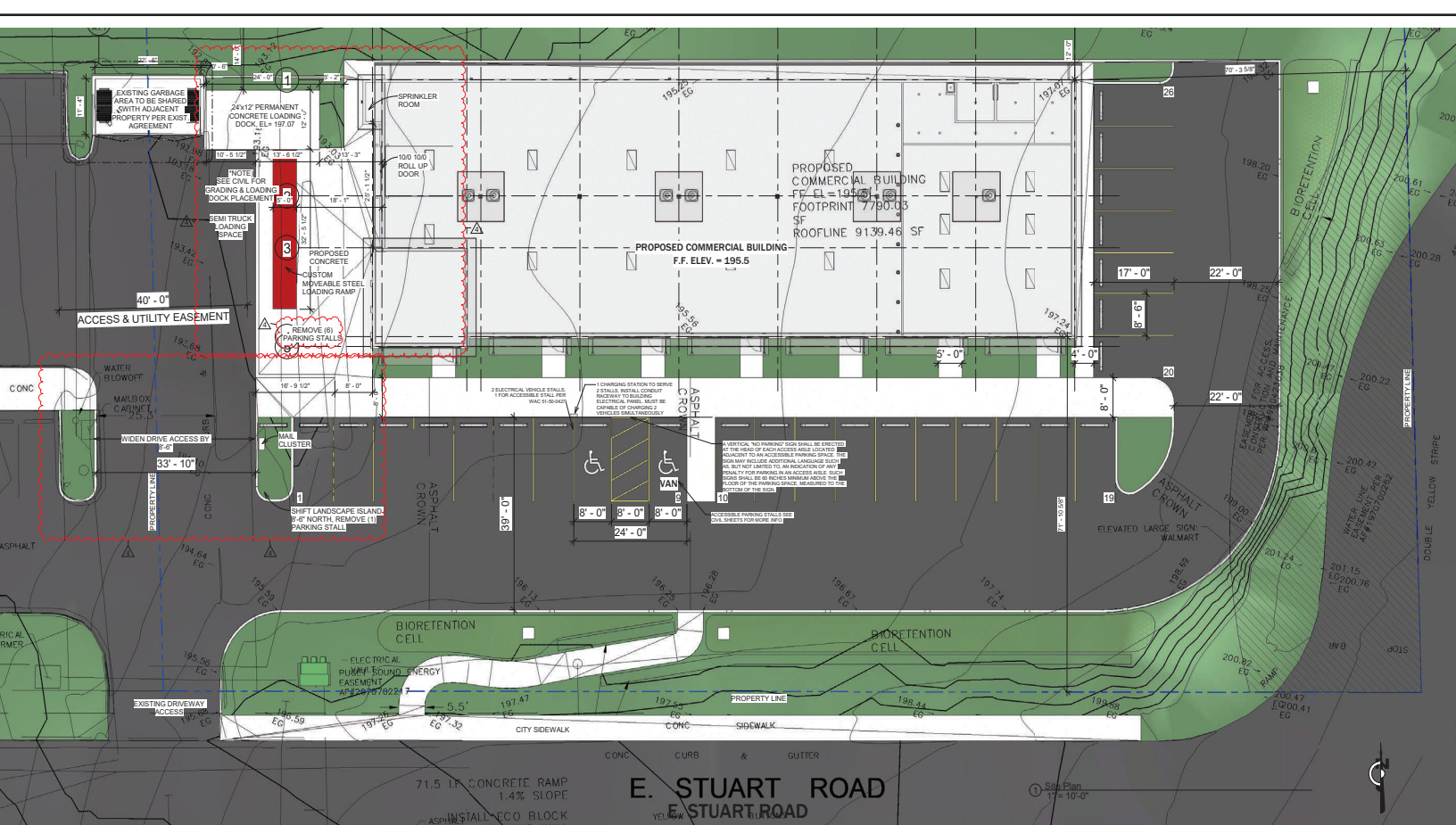
↓  
2  
↑

EXCLUSIVELY LISTED BY:

Troy C. Muljat  
360.820.2000  
troy@muljat.com



Megan McLeod  
360.815.3470  
megan@muljat.com



# OFFERING DESCRIPTION

Newer commercial building in North Bellingham, zoned for light industrial and commercial uses. Located just off Guide Meridian with traffic counts exceeding 29,000 vehicles per day. The area is supported by many well established businesses that attract strong consumer traffic for shopping and dining, including nearby Walmart. The building is currently built out with a retail showroom and industrial/warehouse space. A loading dock with ramp is located on the west side of the building, and on-site parking is available. Tenants may take advantage of the existing loading dock and occupy the entire building, or the space may be demised into a smaller configuration. Ask about free rent options!

The information supplied herein is from sources we deem reliable. It is provided without any representation, warranty or guarantee, expressed or implied as to its accuracy. Prospective Buyer or Tenant should conduct an independent investigation and verifications of all matters deemed to be material including but not limited to statements of income and expenses. Consult your attorney or accountant or other professional advisors.

145 E STUART ROAD, BELLINGHAM, WA

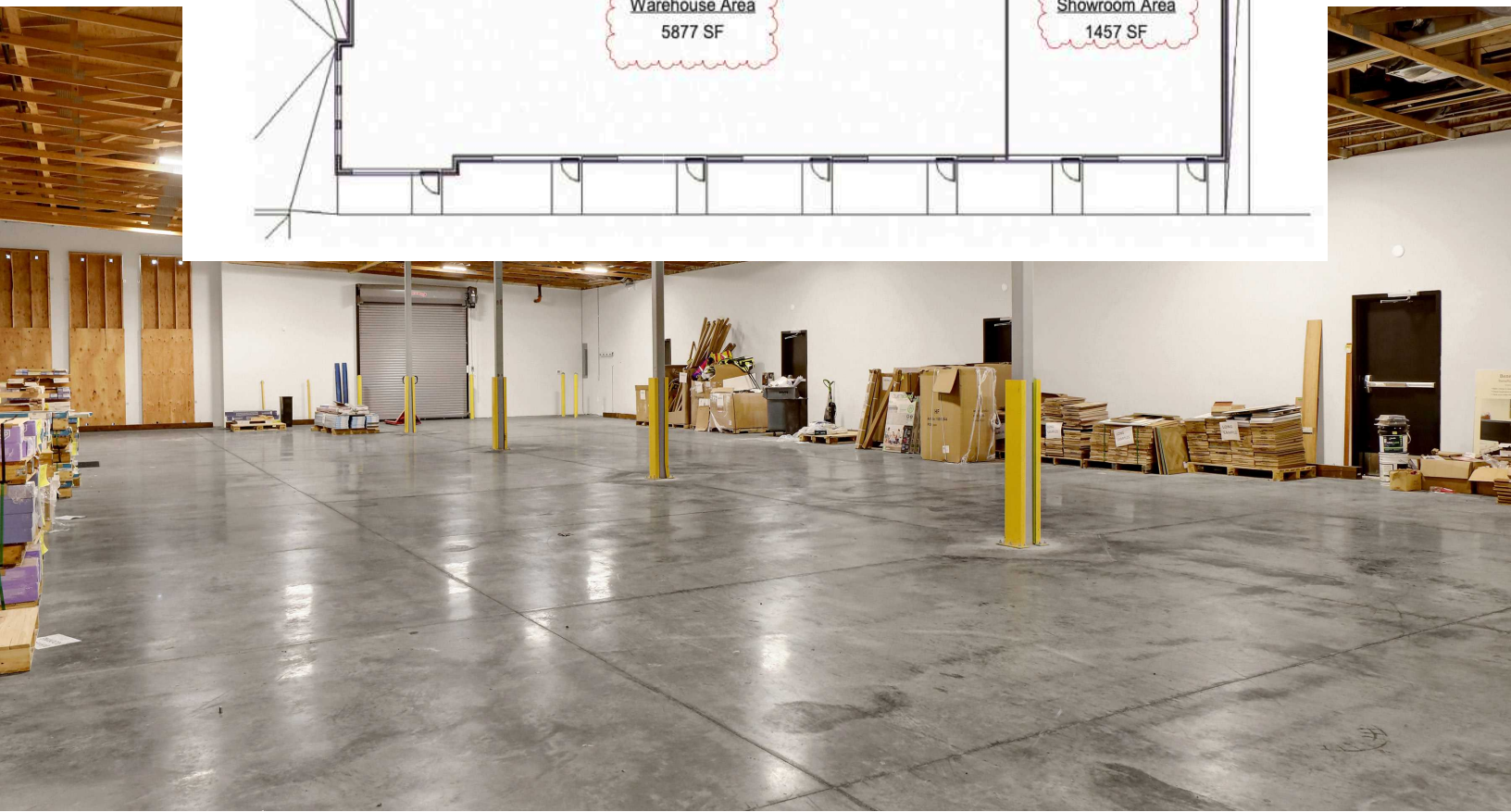
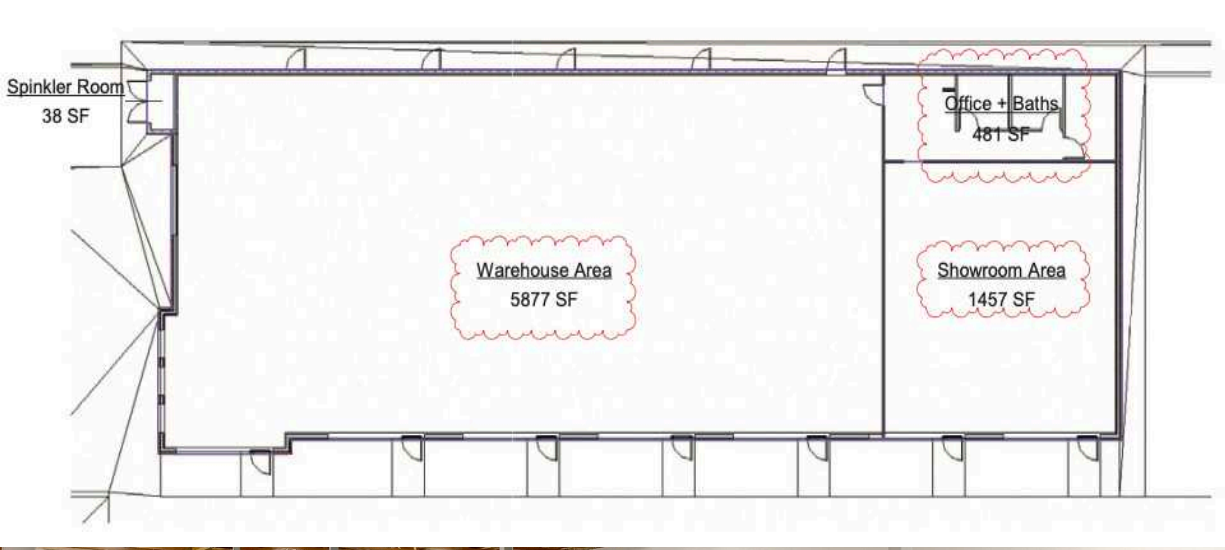
EXCLUSIVELY LISTED BY:



**MULJAT GROUP**  
COMMERCIAL  
MULTI-FAMILY · RETAIL · INDUSTRIAL · OFFICE

Troy C. Muljat  
360.820.2000  
troy@muljat.com

Megan McLeod  
360.815.3470  
megan@muljat.com



The information supplied herein is from sources we deem reliable. It is provided without any representation, warranty or guarantee, expressed or implied as to its accuracy. Prospective Buyer or Tenant should conduct an independent investigation and verifications of all matters deemed to be material including but not limited to statements of income and expenses. Consult your attorney or accountant or other professional advisors.

145 E STUART ROAD, BELLINGHAM, WA

4

EXCLUSIVELY LISTED BY:

Troy C. Muljat  
360.820.2000  
troy@muljat.com



Megan McLeod  
360.815.3470  
megan@muljat.com



Approximately 30,000 vehicles travel this section of Guide Meridian/SR539 daily.

The information supplied herein is from sources we deem reliable. It is provided without any representation, warranty or guarantee, expressed or implied as to its accuracy. Prospective Buyer or Tenant should conduct an independent investigation and verifications of all matters deemed to be material including but not limited to statements of income and expenses. Consult your attorney or accountant or other professional advisors.

145 E STUART ROAD, BELLINGHAM, WA

5

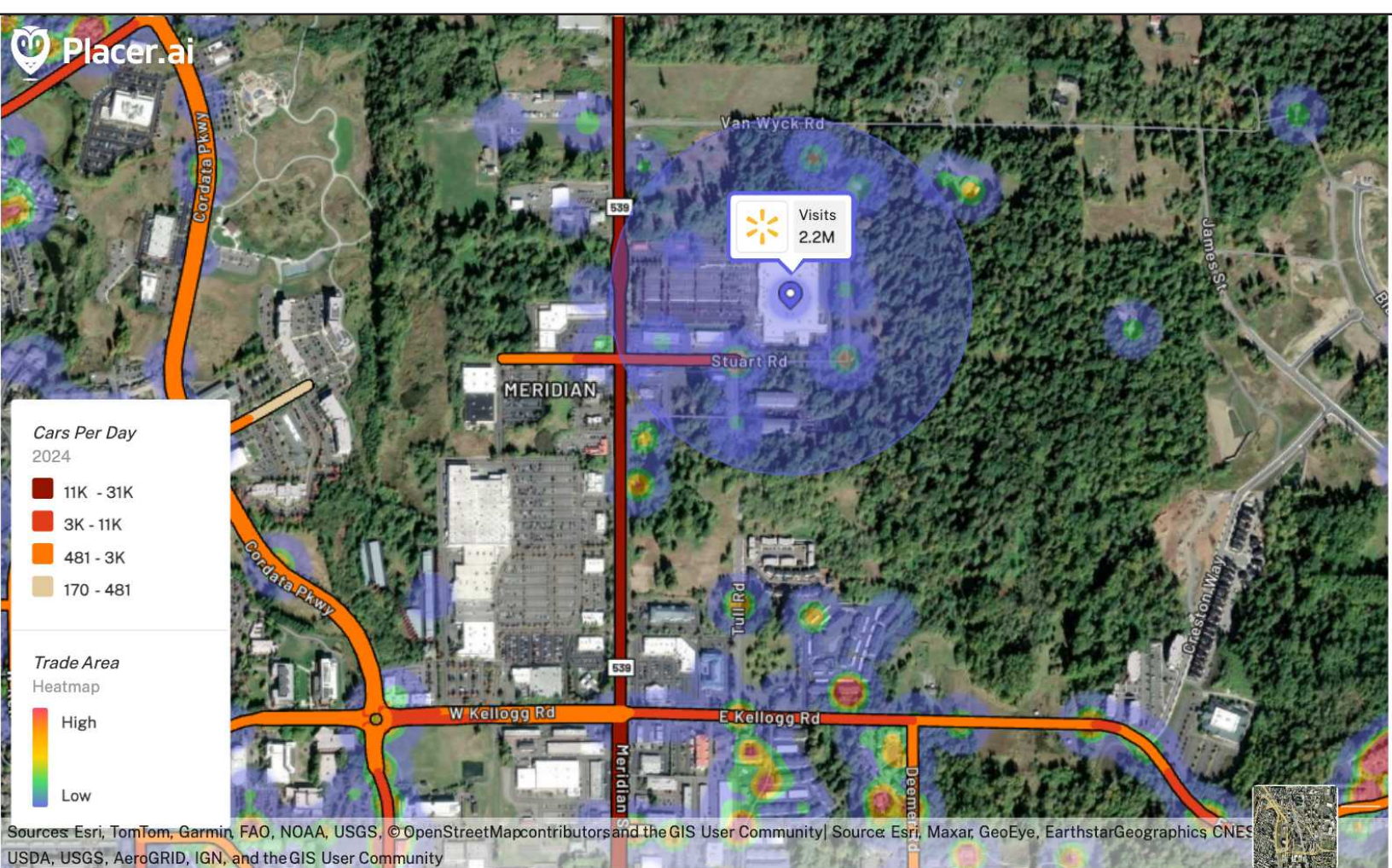
EXCLUSIVELY LISTED BY:



Troy C. Muljat  
360.820.2000  
troy@muljat.com

MULJAT GROUP  
COMMERCIAL  
MULTI-FAMILY · RETAIL · INDUSTRIAL · OFFICE

Megan McLeod  
360.815.3470  
megan@muljat.com



Sources: Esri, TomTom, Garmin, FAO, NOAA, USGS, © OpenStreetMap contributors and the GIS User Community | Source: Esri, Maxar, GeoEye, Earthstar Geographics, CNES, USDA, USGS, AeroGRID, IGN, and the GIS User Community

Walmart (Nearby Activity 1000 ft) | May 1st, 2025 - Apr 30th, 2026  
 Data provided by Placer Labs Inc. (www.placer.ai)



The information supplied herein is from sources we deem reliable. It is provided without any representation, warranty or guarantee, expressed or implied as to its accuracy. Prospective Buyer or Tenant should conduct an independent investigation and verifications of all matters deemed to be material including but not limited to statements of income and expenses. Consult your attorney or accountant or other professional advisors.

145 E STUART ROAD, BELLINGHAM, WA

6

EXCLUSIVELY LISTED BY:

Troy C. Muljat  
 360.820.2000  
 troy@muljat.com

MULJAT GROUP  
 COMMERCIAL  
 MULTI-FAMILY · RETAIL · INDUSTRIAL · OFFICE

Megan McLeod  
 360.815.3470  
 megan@muljat.com

DEMOGRAPHICS

# BELLINGHAM, WA



Bellingham is strategically located along the I-5 corridor between the major cities of Seattle and Vancouver, B.C.. The largest city in Whatcom County, Bellingham offers seamless access to major regional and international markets, and is home to several local colleges and universities including Western Washington University and Bellingham Technical College. Its diverse economy is supported by an educated workforce. Major employers such as St. Joseph's Hospital and BP Cherry Point provide a stable economic foundation.

Paired with strong connectivity and exceptional quality of life, Bellingham presents a compelling opportunity for commercial real estate investment and business growth. With Whatcom County ranking fifth in the state for tourist spending, the area also supports a thriving tourism and recreation economy.

The information supplied herein is from sources we deem reliable. It is provided without any representation, warranty or guarantee, expressed or implied as to its accuracy. Prospective Buyer or Tenant should conduct an independent investigation and verifications of all matters deemed to be material including but not limited to statements of income and expenses. Consult your attorney or accountant or other professional advisors.

145 E STUART ROAD, BELLINGHAM, WA

90 miles  
  
to Seattle

52 miles  
  
to Vancouver,  
B.C.

92,300  
  
Population

\$73,000  
  
Median Income  
per Household

61%  
  
White Collar  
Workforce

Source: ArcGIS Business Analyst / PlacerAI

EXCLUSIVELY LISTED BY:

Troy C. Muljat  
360.820.2000  
troy@muljat.com



Megan McLeod  
360.815.3470  
megan@muljat.com



This Offering Memorandum has been prepared by Muljat Group Commercial for use by a limited number of parties and has been obtained from sources believed reliable. While we do not doubt its accuracy, we have not verified it, and make no guarantee, warranty or representation about it. It is your responsibility to confirm, independently, its accuracy and completeness. All projections have been developed by Muljat Group Commercial, Seller and designated sources, are based upon assumptions relating to the general economy, competition, and other factors beyond control of Owner, and therefore are subject to variation. No representation is made by Muljat Group Commercial or Owner as to the accuracy or completeness of the information contained herein, and nothing contained herein is or shall be relied on as a promise or presentation as to the future performance of the Property. Although the information contained herein is believed to be correct, Owner and its employees disclaim any responsibility for inaccuracies and expect prospective purchasers to exercise independent due diligence in verifying all such information. Further, Muljat Group Commercial, Owner, and its employees disclaim any and all liability for representations and warranties, expressed or implied, contained in, or for omissions from, the Offering Memorandum or any other written or oral communication transmitted or made available to the recipient.

Prospective tenants should be aware that Owner of the real property known as 145 E Stuart Rd is leasing the Property in its "AS IS" condition with all faults, without representations or warranties of any kind or nature. Upon written request prior to and or after contracting to lease, as appropriate, tenant will be given reasonable opportunity to inspect and investigate the Property and all improvements therein, either independently or through agents of tenants choosing. Prospective tenants shall be responsible for their costs and expenses of investigating the Property and all other expenses, professional or otherwise, incurred by them. In addition to the first sentence of this paragraph, but without limiting the generality thereof, tenant shall not be entitled to and should not rely on Owner or its affiliates or its agents as to (i) the quality, nature, adequacy, and physical condition of the Property, including but not limited to, the structural elements, foundation, roof, appurtenances, access, landscaping, parking facilities, the electrical, HVAC, plumbing, sewage, and utility systems, facilities and appliances; (ii) the quality, nature, adequacy, and physical condition of soils, ground water, and geology; (iii) the existence, quality, nature, adequacy and physical condition of utilities serving the Property; (iv) the development potential of the Property, its habitability, merchantability, fitness, suitability, or adequacy of the Property for any particular purpose; (v) the zoning or the legal status of the Property; (vi) the Property's or its operation's compliance with applicable codes, laws, regulations, statutes, ordinances, covenants, conditions, restrictions of any governmental, quasi-governmental entity, or any other person or entity; (vii) the quality of any labor or materials furnished at or to the Property; (viii) the compliance of the Property with any environmental protection, pollution, or land use laws, rules, regulations, orders, or requirements, including, but not limited to, those pertaining to the handling, generating, storing, or disposing of any hazardous materials, or the Americans with Disabilities Act; and (ix) except as expressly provided otherwise in an executed contract of sale, the condition of title and the nature, status, and extent of any right-of-way, lease, right of retention, possession, lien, encumbrance, license, reservation, covenant, condition, restriction, and any other matter affecting the title. Although the Owner may have performed work, or contracted for work performed by related and or third parties in connection with the Property, Owner and its agents shall not be responsible to tenant or any successor on account of any errors or omissions or construction defects of such predecessors and or related third parties.

The Offering Memorandum does not constitute a representation that there has been no change in the business or affairs of the Property or Owner since the date of preparation of the Offering Memorandum. Analysis and verification of the information contained in the Offering Memorandum is solely the responsibility of the prospective tenant.

Owner and Muljat Group Commercial each expressly reserve the right, at their sole discretion, to reject any or all expressions of interest or offers regarding the Property and or terminate discussions with any entity at any time with or without notice. Owner shall have no legal commitment or obligation to any entity reviewing this Offering Memorandum or making an offer to lease the Property unless and until such offer is approved by Owner a written agreement for the leasing of the Property has been fully executed, delivered and approved by Owner and its legal counsel, and any obligations set by Owner thereunder have been satisfied or waived.

Any offer to Owner must be (i) presented in the form of a non-binding Letter of Intent, (ii) incorporated in a formal written contract to lease to be prepared by Owner and executed by both parties, and (iii) approved by Owner before the transaction becomes binding on either party. Neither the prospective tenant nor the Owner shall be bound until execution of the contract of a lease, which contract shall supersede prior discussions and writings and shall constitute the sole agreement of the parties.

This Offering Memorandum and the contents, except such information, which is a matter of public record or is provided in sources available to the public, are of a confidential nature and furnished solely for the purpose of considering the purchase of real property described herein. By accepting this Offering Memorandum, you agree that you will hold and treat it in the strictest confidence, that you will not disclose this Offering Memorandum or any of the contents to any other entity (except to outside advisors retained by you, if necessary, for your determination of whether or not to make a proposal and from whom you have obtained an agreement of confidentiality) without the express prior written consent of Owner or Muljat Group Commercial and that you will use the information in this Offering Memorandum or any of its content in any fashion or manner detrimental to the interest of Owner or Muljat Group Commercial. If you have no interest in the Property, please return the Offering Memorandum forthwith.

The information supplied herein is from sources we deem reliable. It is provided without any representation, warranty or guarantee, expressed or implied as to its accuracy. Prospective Buyer or Tenant should conduct an independent investigation and verifications of all matters deemed to be material including but not limited to statements of income and expenses. Consult your attorney or accountant or other professional advisors.

145 E STUART ROAD, BELLINGHAM, WA

EXCLUSIVELY LISTED BY:



Troy C. Muljat  
360.820.2000

troy@muljat.com

MULJAT GROUP  
COMMERCIAL  
MULTI-FAMILY · RETAIL · INDUSTRIAL · OFFICE

Megan McLeod  
360.815.3470

megan@muljat.com