



Colliers

Build-To-Suit  
Industrial For Lease

**Gregg Riva**

Executive Vice President  
gregg.riva@colliers.com  
+1 425 453 3132

**Liam O'Kelley**

Associate  
liam.okelley@colliers.com  
+1 425 923 0208

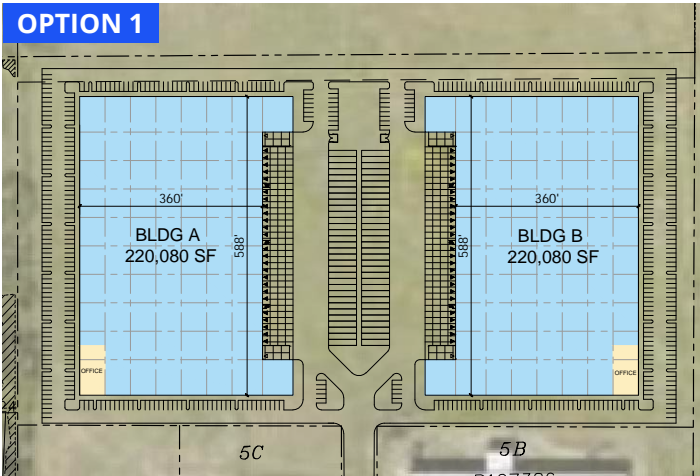
**Colliers Bellevue**

11225 SE 6th Street, #240  
Bellevue, WA, 98004  
colliers.com

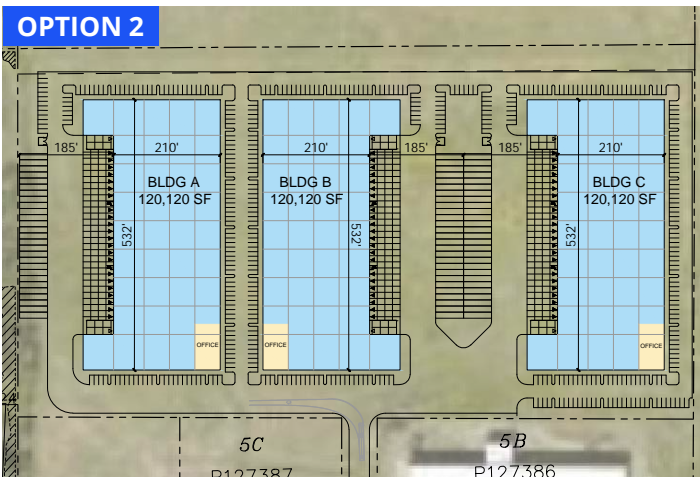
# Bay Ridge Industrial

16399 Peterson Road, Burlington, WA 98233

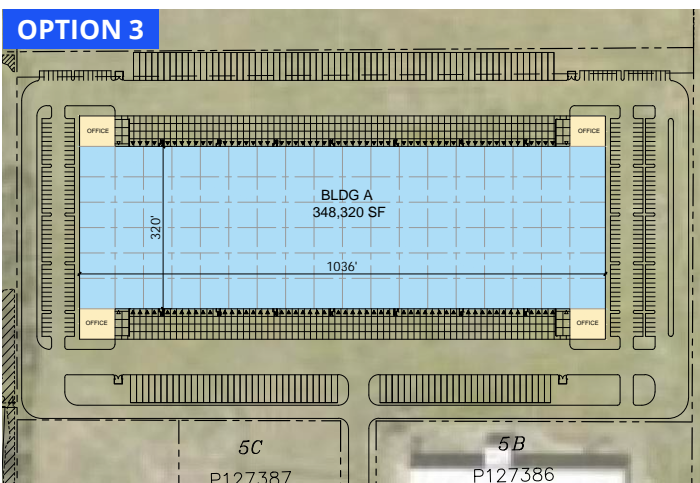
- Site Size: 23.05 Acres
- Size Range: ±120,120 - 348,320 SF
- Clear Height: 32' – 36'
- Power: Power to suit — service sized and delivered to meet tenant requirements
- Zoning: Light Industrial (BR-LI) – Skagit County



	Bldg A	Bldg B
Office	10,000 SF	10,000 SF
Whse	210,080 SF	210,080 SF
Parking	230 Stalls	230 Stalls
Trailer	32	32
Dock Doors	25	25
Drive In Doors	2	2



	Bldg A	Bldg B	Bldg C
Office	8,000 SF	8,000 SF	8,000 SF
Whse	112,120 SF	112,120 SF	112,120 SF
Parking	125 Stalls	125 Stalls	152 Stalls
Trailer	45 Stalls	45 Stalls	45 Stalls
Dock Doors	22	22	22
Drive In Doors	2	2	2



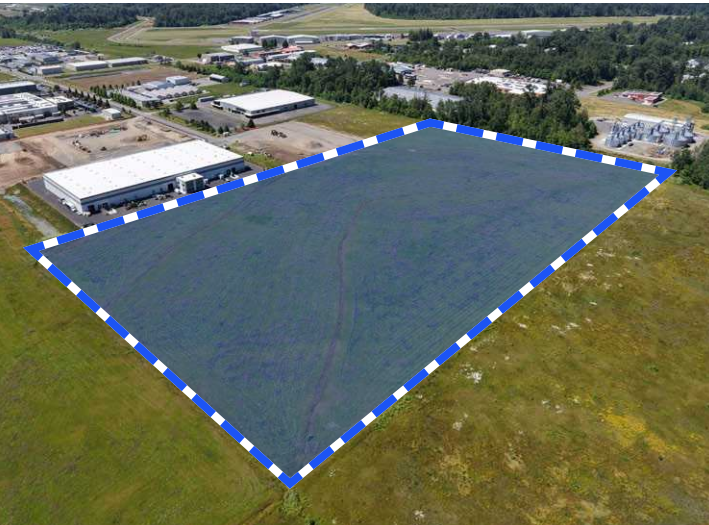
	Bldg A
Office	34,832 SF
Whse	313,488 SF
Parking	250 Stalls
Trailer	138 Stalls
Dock Doors	100
Drive In Doors	4



**Colliers Bellevue**  
11225 SE 6th Street, #240  
Bellevue, WA, 98004  
colliers.com

**Gregg Riva**  
Executive Vice President  
gregg.riva@colliers.com  
+1 425 453 3132

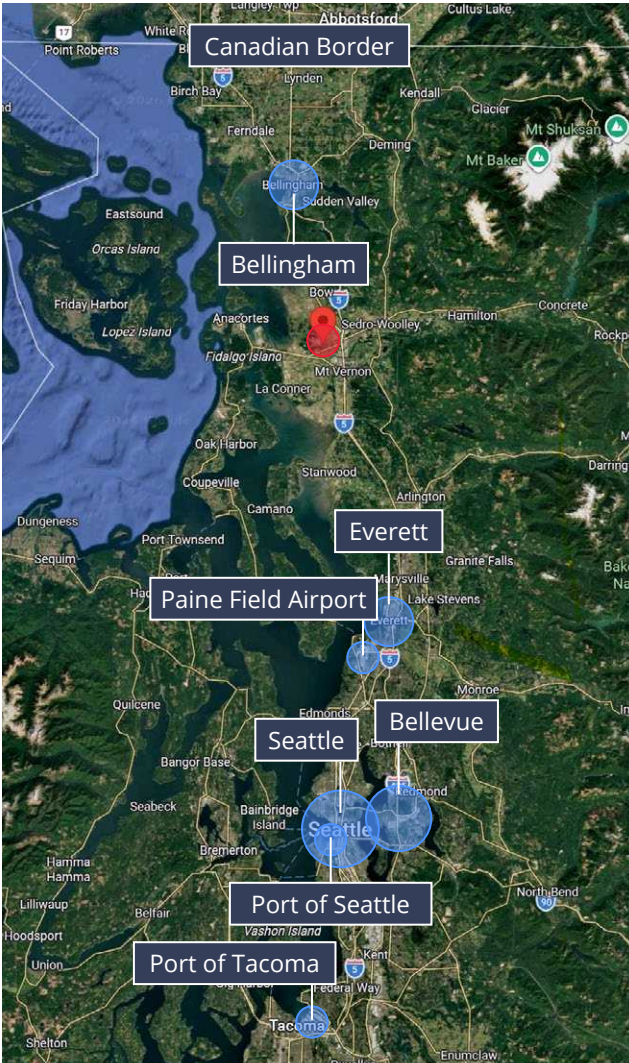
**Liam O'Kelley**  
Associate  
liam.okelley@colliers.com  
+1 425 923 0208



**Colliers Bellevue**  
11225 SE 6th Street, #240  
Bellevue, WA, 98004  
colliers.com

**Gregg Riva**  
Executive Vice President  
gregg.riva@colliers.com  
+1 425 453 3132

**Liam O'Kelley**  
Associate  
liam.okelley@colliers.com  
+1 425 923 0208

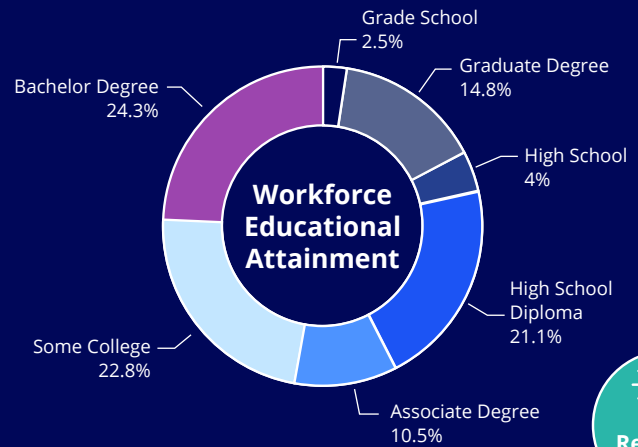
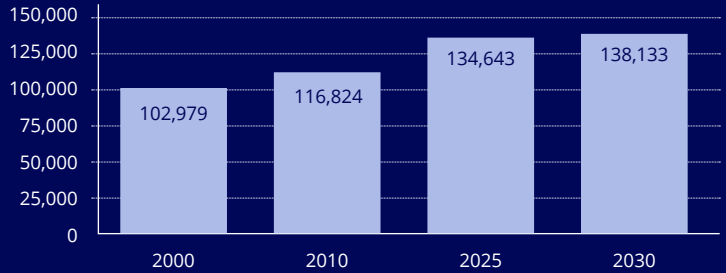


Canadian Border	53-min drive
Bellingham	30-min drive
Everett	40-min drive
Paine Field Airport	50-min drive
Seattle	1 hr 30-min drive
Bellevue	1 hr 20-min drive
Port of Seattle	1 hr 30-min drive
Port of Tacoma	2 hr 20-min drive

## Skagit County Demographics

### Population

2.6% Population Change from 2025 to 2030



**Colliers Bellevue**  
11225 SE 6th Street, #240  
Bellevue, WA, 98004  
colliers.com

**Gregg Riva**  
Executive Vice President  
gregg.riva@colliers.com  
+1 425 453 3132

**Liam O'Kelley**  
Associate  
liam.okelley@colliers.com  
+1 425 923 0208