

FOR LEASE

COMMONS PROFESSIONAL CENTER

*4,065 RSF Class-A Medical Space For Lease
One Block from Overlake Medical Center
and Kaiser Permanente*

1200 112TH AVE NE, BELLEVUE, WA

KIDDER.COM

 Kidder
Mathews

Property Features

Class-A Medical Office Building

Located approximately one block from Overlake Hospital Medical Center and Kaiser Permanente

Fully sprinklered buildings

Free surface parking and covered parking stalls 4.5/1,000 SF (60% covered parking)

Join the existing diversified healthcare providers: Overlake, Optum, Dermatology, Surgery, Physical Therapy, and various dental providers

AVAILABILITIES

Suite B-200 – 4,065 SF

Existing orthodontics clinic buildout

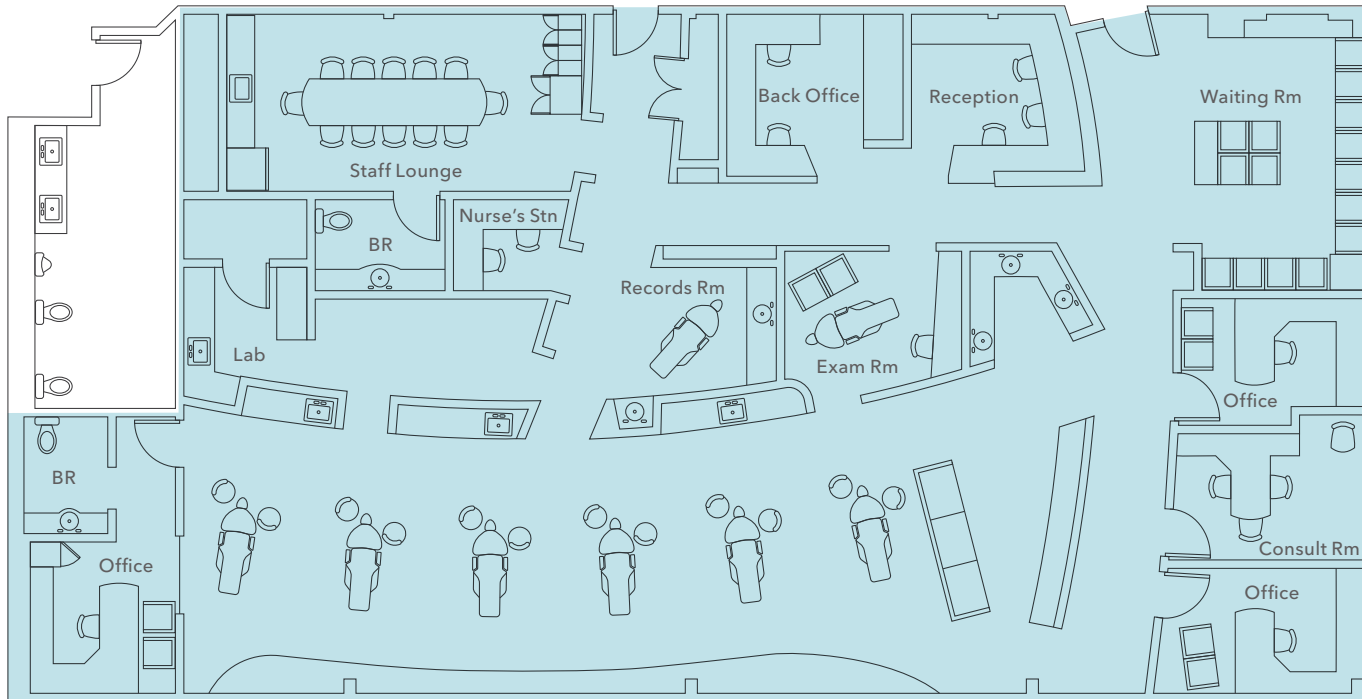
7 operation stations with sinks, nurse's station, and exam room

Private office space, employee lounge, reception area, and storage space

Property management services



FLOOR PLAN | SUITE B-200



4,065 SF

AVAILABLE

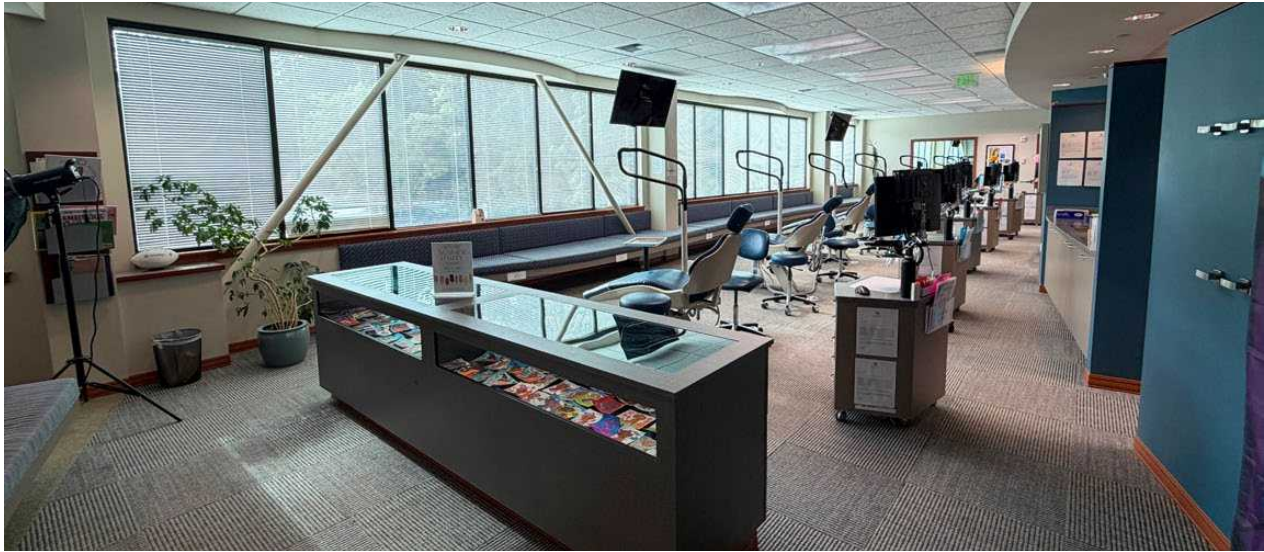
CALL

BROKERS FOR RATES

NOW

AVAILABLE

PROPERTY PHOTOS | SUITE B-200



COMMONS PROFESSIONAL CENTER

Owned and managed by

BLOCH
PROPERTIES

Exclusively leased by

ALEX ANDREA
Associate Vice President
425.450.1163
alex.andrea@kidder.com

TODD BATTISON
Senior Vice President
206.296.9621
todd.battison@kidder.com

KIDDER.COM

This information supplied herein is from sources we deem reliable. It is provided without any representation, warranty, or guarantee, expressed or implied as to its accuracy. Prospective Buyer or Tenant should conduct an independent investigation and verification of all matters deemed to be material, including, but not limited to, statements of income and expenses. Consult your attorney, accountant, or other professional advisor.

**km Kidder
Mathews**