

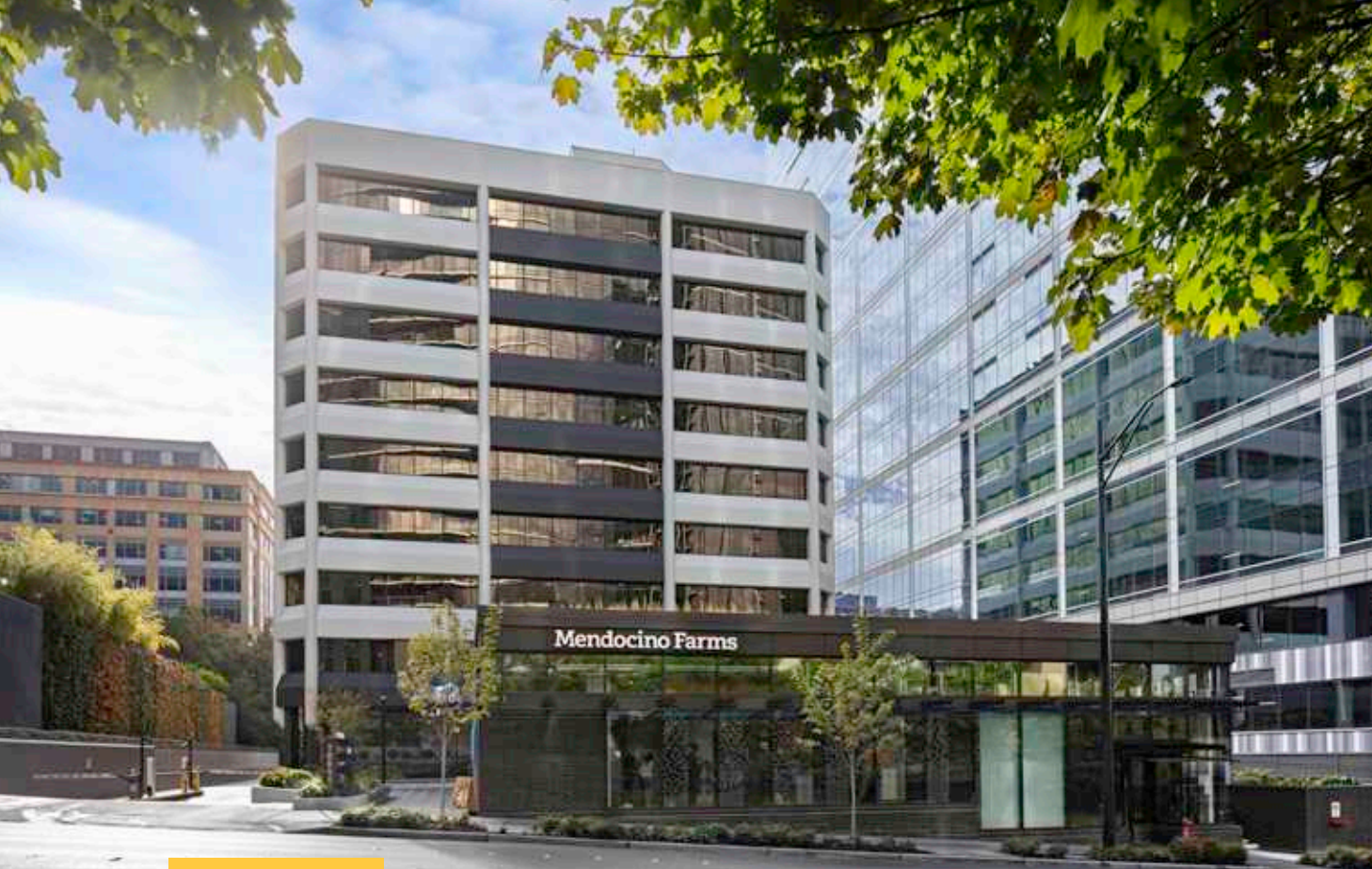
10655 NE 4<sup>TH</sup> STREET  
BELLEVUE, WA

# KEY BANK BUILDING



**EFANA**  
GROUP OF COMPANIES

**BRODERICK**  
GROUP



## BUILDING FEATURES & AMENITIES



Parking ratio up to 3.9/1,000 SF



Office suites ideal for small to mid-size tenants



On-site property management office and tenant conference room



Excellent proximity and easy access to I-90, I-405 and the 520 Bridge



Great proximity to restaurants, hotels and shopping, including Bellevue Square and The Bellevue Connection

## BUILDING HIGHLIGHTS

- Rare, nine-story office building located in the heart of Downtown Bellevue
- On-site property management and small floor plates make it an ideal choice for small to mid-sized tenants
- Abundant 3.9/1,000 SF parking ratio is unmatched in Downtown Bellevue



Key Bank Building has been recognized by the U.S. Government Protection Agency as a top performing commercial building based on its effective energy management practices and innovative efficiency solutions.



# Mendocino Farms

**NOW OPEN**  
In the Retail Pavilion

**NOW OPEN**  
Fully Renovated Plaza  
& Surface Parking Lot





## CURRENT AVAILABILITIES

SUITE	SQUARE FEET	STARTING RATE	DESCRIPTION / FEATURES	AVAILABLE
<u>801</u>	3,957 RSF	\$60.00 / SF, Full Service	Seven (7) perimeter private offices, large conference room, open work space, reception and kitchenette. <a href="#">Virtual Tour</a>	Now
<u>701</u>	1,922 RSF	\$60.00 / SF, Full Service	Four (4) private offices, conference room, reception area and kitchenette.	Now
<u>430</u>	3,027 RSF	\$60.00 / SF, Full Service	Fully furnished spec suite. Reception / entry area, three (3) private offices, large conference room, two (2) focus rooms, phone room, open office area (8 workstations), break area with kitchenette, and storage / supply room.	10/1/2026
<u>L-101</u>	1,565 RSF	\$60.00 / SF, Full Service	Large open work area with high ceilings, server room and private restroom.	Now

# KEY BANK BUILDING

10655 NE 4<sup>TH</sup> STREET • BELLEVUE, WA

For further information please contact exclusive leasing agents:

**COLIN TANIGAWA**

425.274.4283

[tanigawa@broderickgroup.com](mailto:tanigawa@broderickgroup.com)

**ERIC HAEHL**

425.646.5266

[haehl@broderickgroup.com](mailto:haehl@broderickgroup.com)

**TIM CANTRELL**

425.274.4292

[cantrell@broderickgroup.com](mailto:cantrell@broderickgroup.com)

*The information contained herein has been given to us by the owner or sources that we deem reliable. We have no reason to doubt its accuracy, but we do not guarantee it. Prospective tenants should carefully verify all information contained herein.*

# KEY BANK BUILDING

10655 NE 4<sup>TH</sup> STREET • BELLEVUE, WA



For further information please contact exclusive leasing agents:

### COLIN TANIGAWA

425.274.4283

[tanigawa@broderickgroup.com](mailto:tanigawa@broderickgroup.com)

### ERIC HAEHL

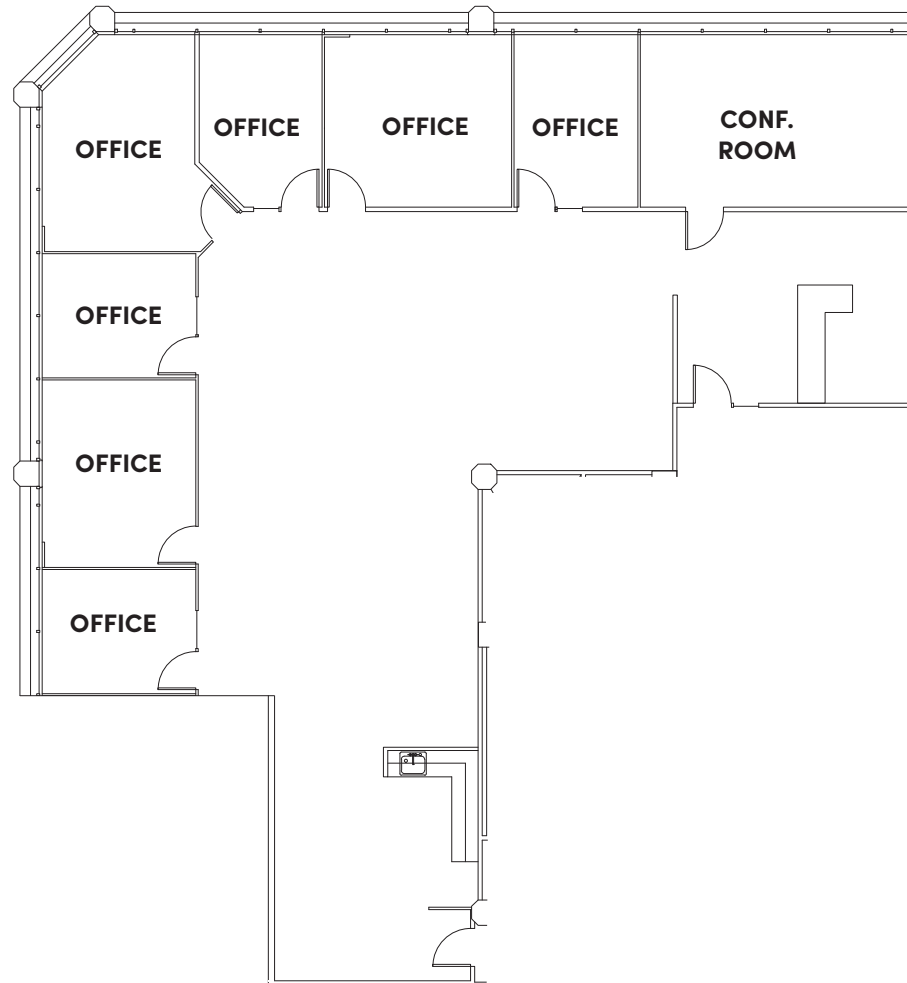
425.646.5266

[haehl@broderickgroup.com](mailto:haehl@broderickgroup.com)

### TIM CANTRELL

425.274.4292

[cantrell@broderickgroup.com](mailto:cantrell@broderickgroup.com)



## SUITE 801

### 3,957 SF

Seven (7) perimeter private offices

Large conference room

Open work space

Reception

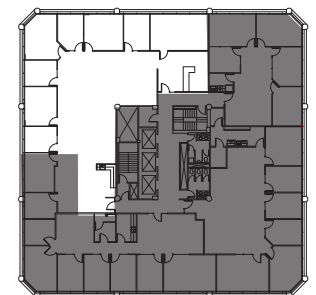
Kitchenette

Cityscape views

Available Now



SEE ENLARGED FLOOR PLAN



[↑ BACK TO AVAILABLE](#)

# KEY BANK BUILDING

10655 NE 4<sup>TH</sup> STREET • BELLEVUE, WA



For further information please contact  
exclusive leasing agents:

**COLIN TANIGAWA**

425.274.4283

[tanigawa@broderickgroup.com](mailto:tanigawa@broderickgroup.com)

**ERIC HAEHL**

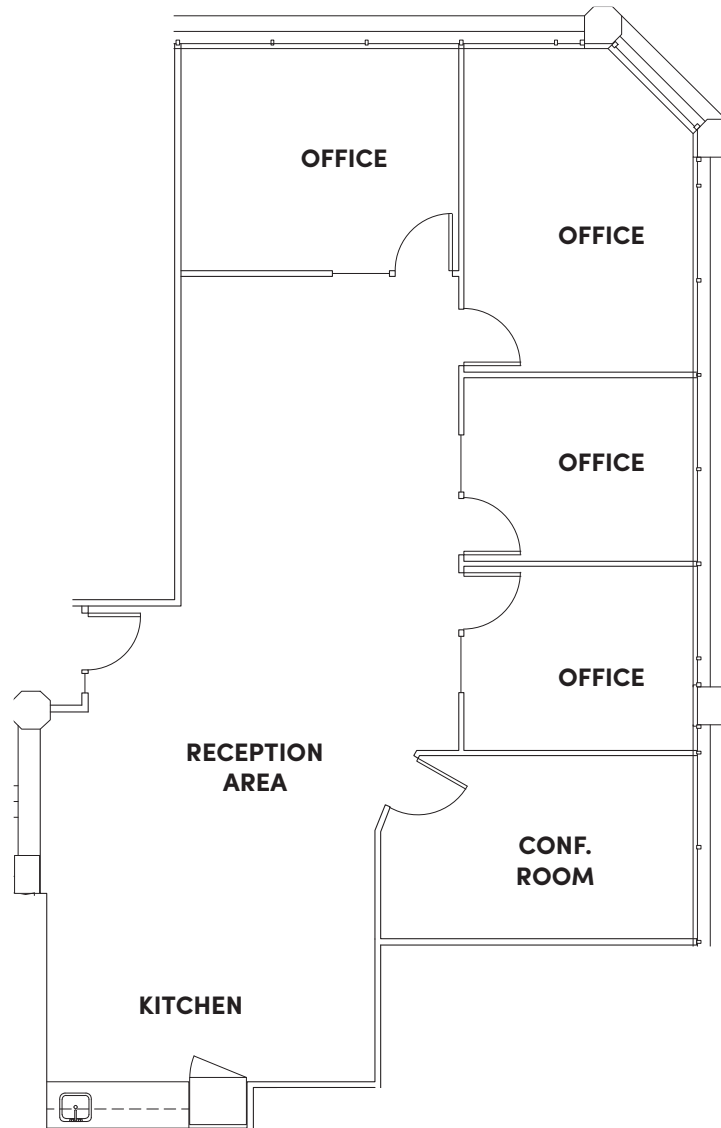
425.646.5266

[haehl@broderickgroup.com](mailto:haehl@broderickgroup.com)

**TIM CANTRELL**

425.274.4292

[cantrell@broderickgroup.com](mailto:cantrell@broderickgroup.com)



## SUITE 701 1,922 SF

- Four (4) private offices
- Conference room
- Reception area
- Storage & server room
- Kitchenette
- Available Now

[SEE ENLARGED FLOOR PLAN](#)



[↑ BACK TO AVAILABLE](#)

# KEY BANK BUILDING

10655 NE 4<sup>TH</sup> STREET • BELLEVUE, WA



For further information please contact exclusive leasing agents:

**COLIN TANIGAWA**

425.274.4283

[tanigawa@broderickgroup.com](mailto:tanigawa@broderickgroup.com)

**ERIC HAEHL**

425.646.5266

[haehl@broderickgroup.com](mailto:haehl@broderickgroup.com)

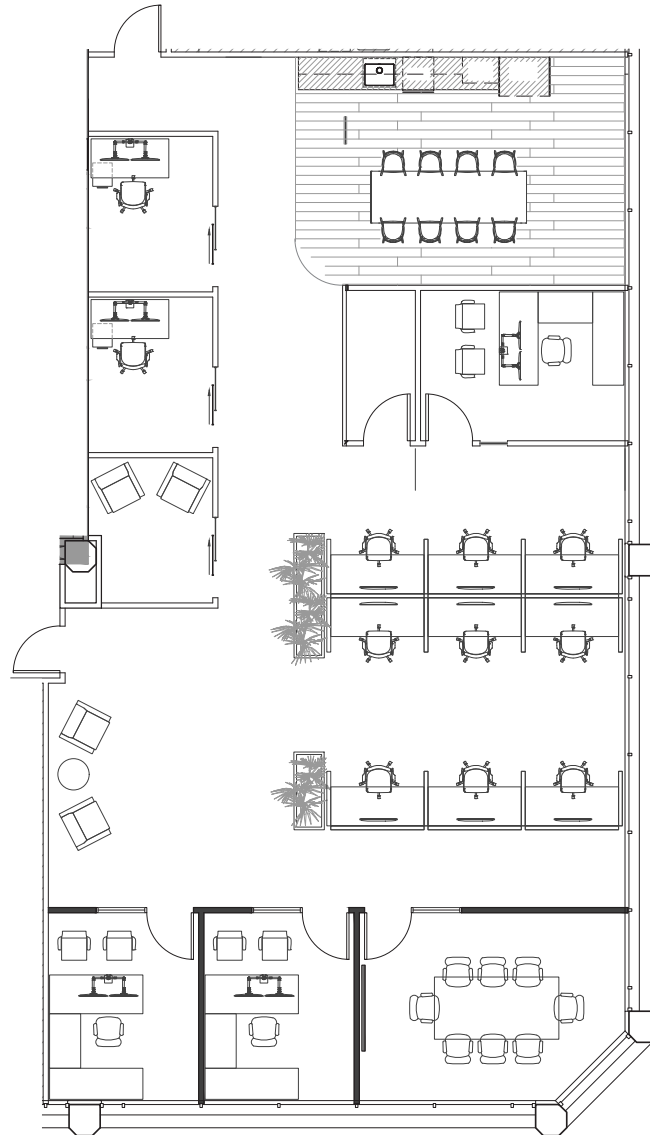
**TIM CANTRELL**

425.274.4292

[cantrell@broderickgroup.com](mailto:cantrell@broderickgroup.com)



## FULLY FURNISHED SPEC SUITE

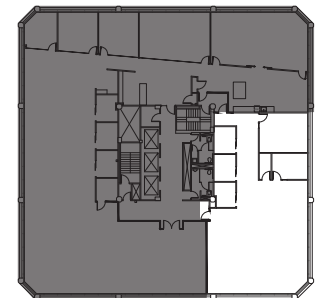


# SUITE 430

## 3,027 SF

- Reception / entry area
- Three (3) private offices
- Large conference room
- Two (2) focus rooms
- Phone room
- Open office area (8 workstations)
- Break area with kitchenette
- Storage / supply room
- Available 10/1/2026

**SEE ENLARGED  
FLOOR PLAN**



[↑ BACK TO AVAILABLE](#)



# SUITE L-101

## 1,565 SF

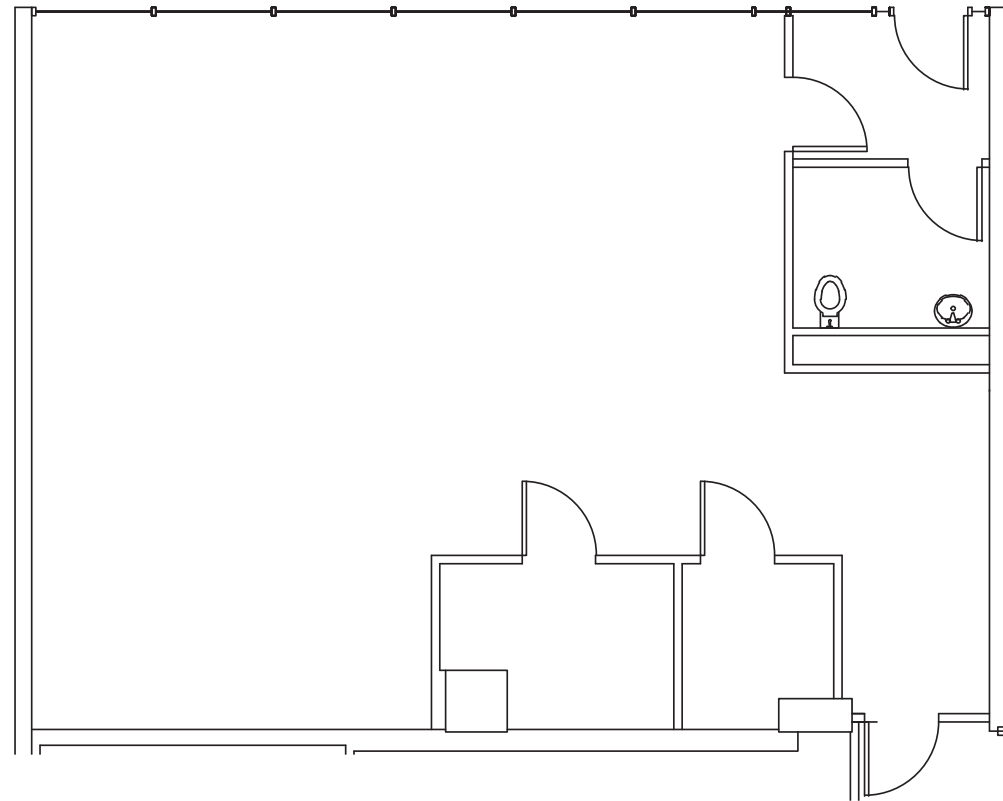
Large open work area

High ceilings

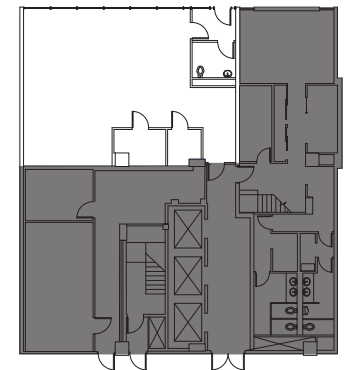
Server room

Private restroom

Available Now



[SEE ENLARGED FLOOR PLAN](#)



# KEY BANK BUILDING

10655 NE 4<sup>TH</sup> STREET • BELLEVUE, WA



For further information please contact  
exclusive leasing agents:

**COLIN TANIGAWA**

425.274.4283

[tanigawa@broderickgroup.com](mailto:tanigawa@broderickgroup.com)

**ERIC HAEHL**

425.646.5266

[haehl@broderickgroup.com](mailto:haehl@broderickgroup.com)

**TIM CANTRELL**

425.274.4292

[cantrell@broderickgroup.com](mailto:cantrell@broderickgroup.com)

[↑ BACK TO AVAILABLE](#)

# AMENITIES MAP

