

FOR LEASE

WOODINVILLE PARK

*Rare, 3,053 SF Warehouse Space
with Grade Loading Available for
Lease in Woodinville, WA*

5817 238TH ST SE, WOODINVILLE, WA 98072

AVAILABLE
SUITE



238TH ST SE



Woodinville Park has great access to SR-522, I-405, downtown Woodinville & Bothell.

AVAILABLE	Suite 3: 3,053 SF total size ±800 SF office size
IMPROVEMENTS	Building repainted, new roof & new asphalt in 2023
LOADING	1 grade
ZONED	LI (Light Industrial)
POWER	3-phase
CLEAR HEIGHT	21'
SAFETY	Fully sprinklered
NNN RATE	\$0.33/SF

3,053 SF

AVAILABLE

\$1.45

LEASE RATE (SF/MO)
BLENDED, NNN

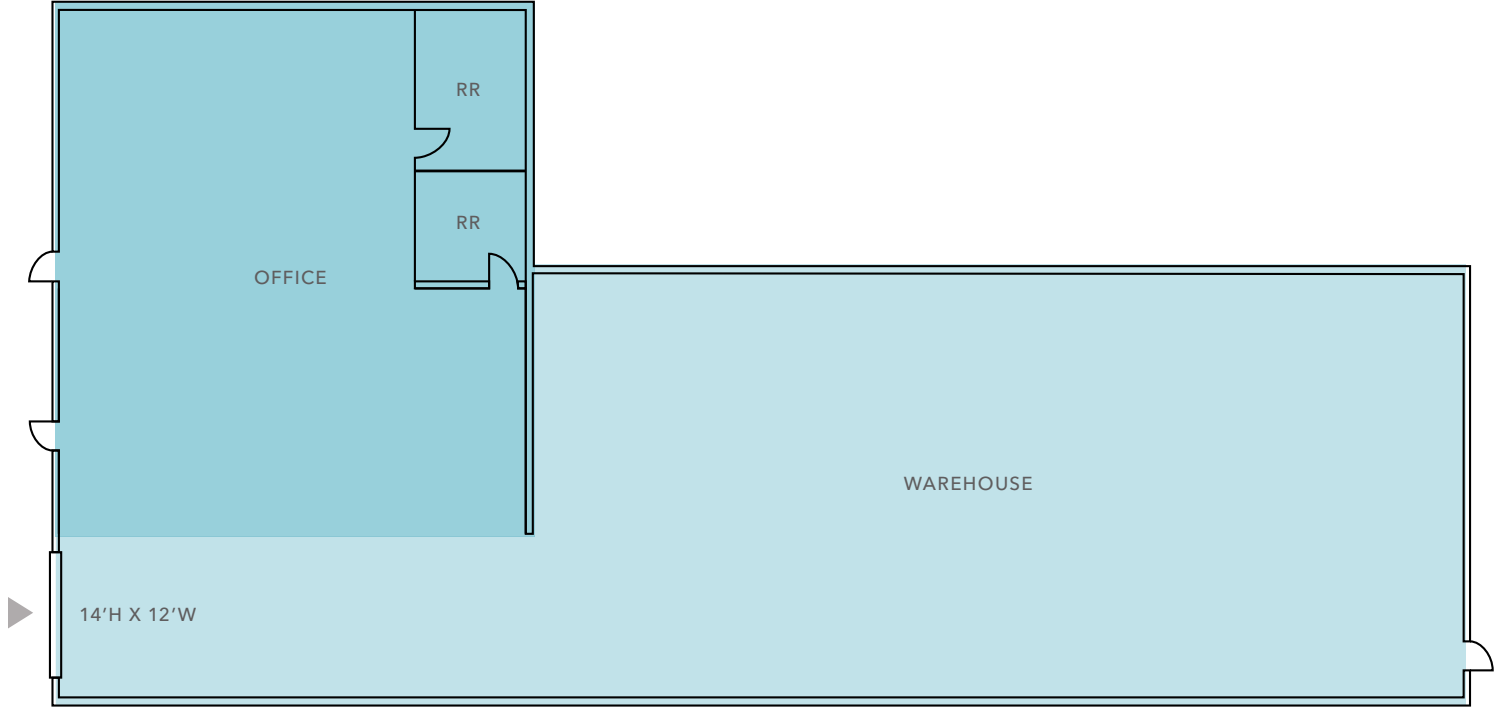
FLOOR PLAN

3,053 SF

AVAILABLE

\$1.45

LEASE RATE (SF/MO)
BLENDED, NNN



▲ Grade-level loading



WOODINVILLE PARK

Exclusively leased by

JASON BLOOM
425.450.1102
jason.bloom@kidder.com

TODD GAUTHIER
425.450.1118
todd.gauthier@kidder.com

KIDDER.COM

This information supplied herein is from sources we deem reliable. It is provided without any representation, warranty, or guarantee, expressed or implied as to its accuracy. Prospective Buyer or Tenant should conduct an independent investigation and verification of all matters deemed to be material, including, but not limited to, statements of income and expenses. Consult your attorney, accountant, or other professional advisor.

