

FOR SUBLEASE

# 1840 MARINE VIEW DRIVE

TACOMA, WA 98422

An aerial photograph of an industrial facility, likely a lumber mill or processing plant, situated along a waterfront. The facility consists of several large, interconnected buildings with light-colored roofs and extensive outdoor storage areas filled with stacks of lumber and other materials. A prominent orange outline highlights a specific section of the facility, and a white line with a dot points to a smaller orange rectangle within this section, labeled 'SUBJECT PROPERTY'. The waterfront area shows various boats and structures, and a residential parking lot is visible in the lower-left corner.

SUBJECT  
PROPERTY

KIDDER.COM

**km** Kidder  
Mathews

## 20,000 SF Manufacturing Facility

### PROPERTY HIGHLIGHTS

Sublease term through 9.30.2030

Three 10-ton overhead cranes

Jib cranes throughout

Heavy 3 Phase Power (480)

2 oversized grade level doors

24-foot clear height

±3,000 SF Office

Additional mezzanine office available

Separated warehouse breakroom

Outside storage negotiable

Call brokers for rates

**HUNTER CLARKE**

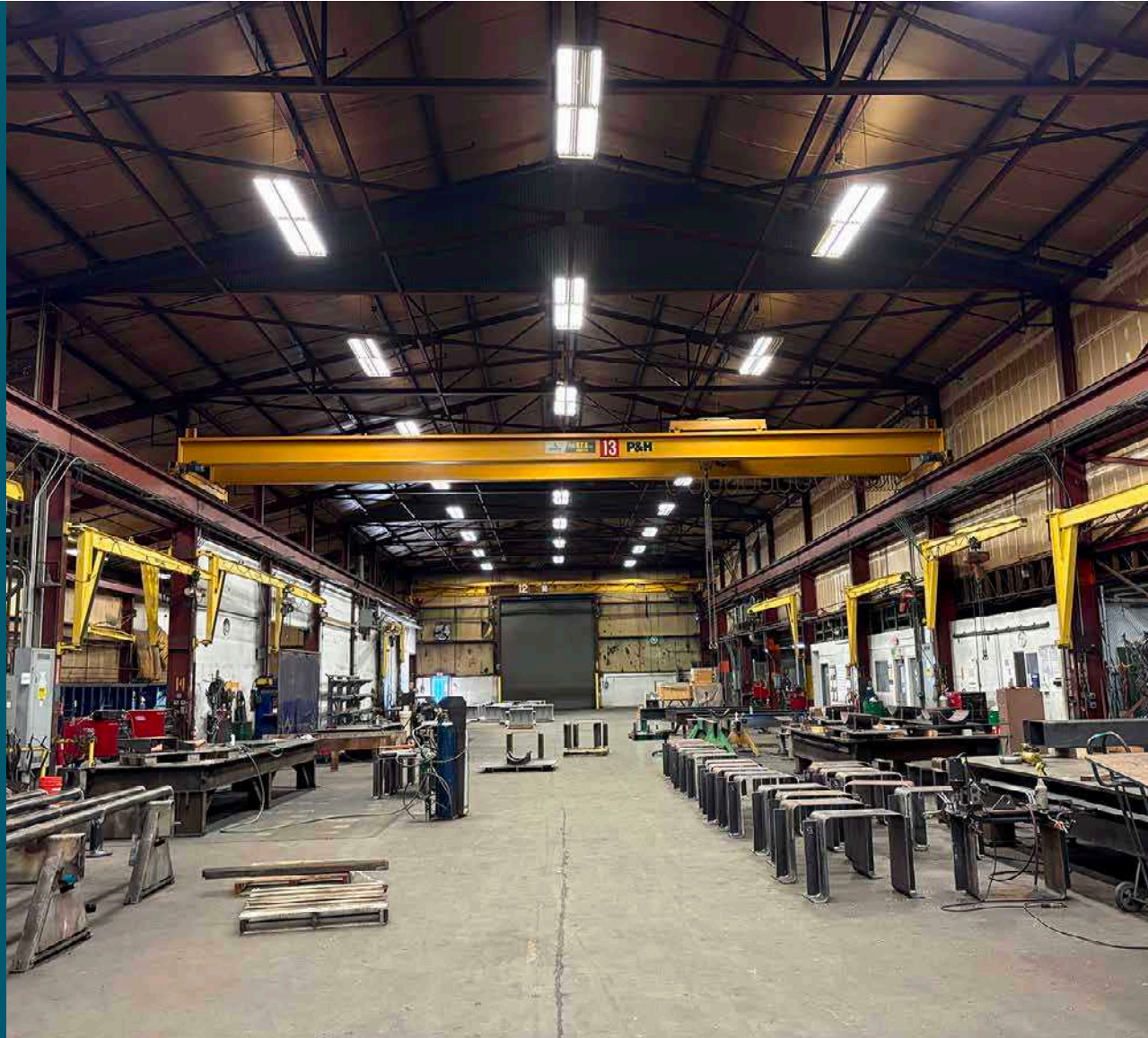
253.722.1454

hunter.clarke@kidder.com

**TODD CLARKE**

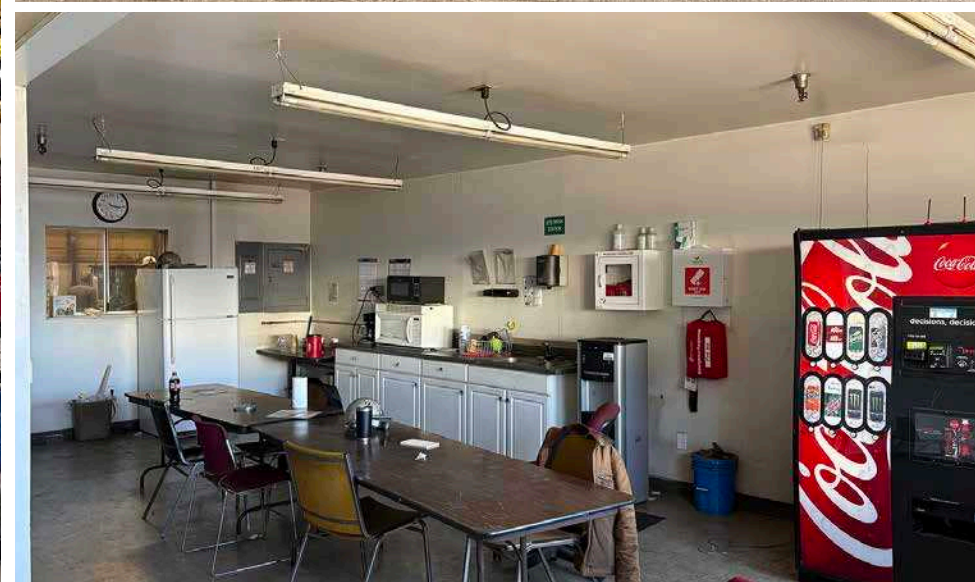
253.722.1422

todd.clarke@kidder.com



**KIDDER.COM**

This information supplied herein is from sources we deem reliable. It is provided without any representation, warranty, or guarantee, expressed or implied as to its accuracy. Prospective Buyer or Tenant should conduct an independent investigation and verification of all matters deemed to be material, including, but not limited to, statements of income and expenses. Consult your attorney, accountant, or other professional advisor. All Kidder Mathews designs are the sole property of Kidder Mathews. Branded materials and layouts are not authorized for use by any other firm or person.



**KIDDER.COM**

This information supplied herein is from sources we deem reliable. It is provided without any representation, warranty, or guarantee, expressed or implied as to its accuracy. Prospective Buyer or Tenant should conduct an independent investigation and verification of all matters deemed to be material, including, but not limited to, statements of income and expenses. Consult your attorney, accountant, or other professional advisor. All Kidder Mathews designs are the sole property of Kidder Mathews. Branded materials and layouts are not authorized for use by any other firm or person.