

HIGHLINE PROFESSIONAL BUILDING

16122 8TH AVE SW | BURIEN, WA 98166

**16122 8TH AVE SW
BURIEN, WA 98166**



1,284 SF

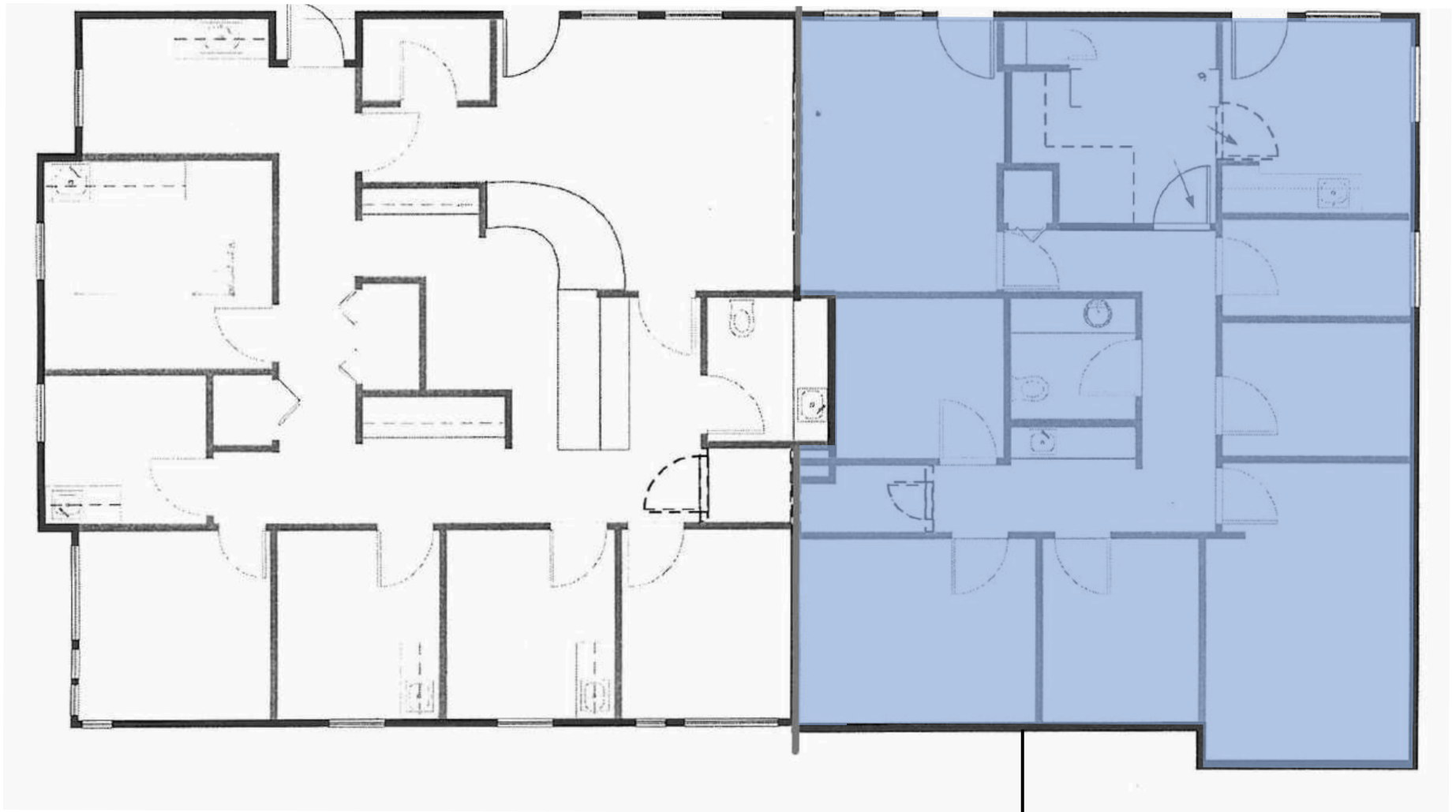
RETAIL FOR LEASE

\$20

PER SF

\$11.23

NNN



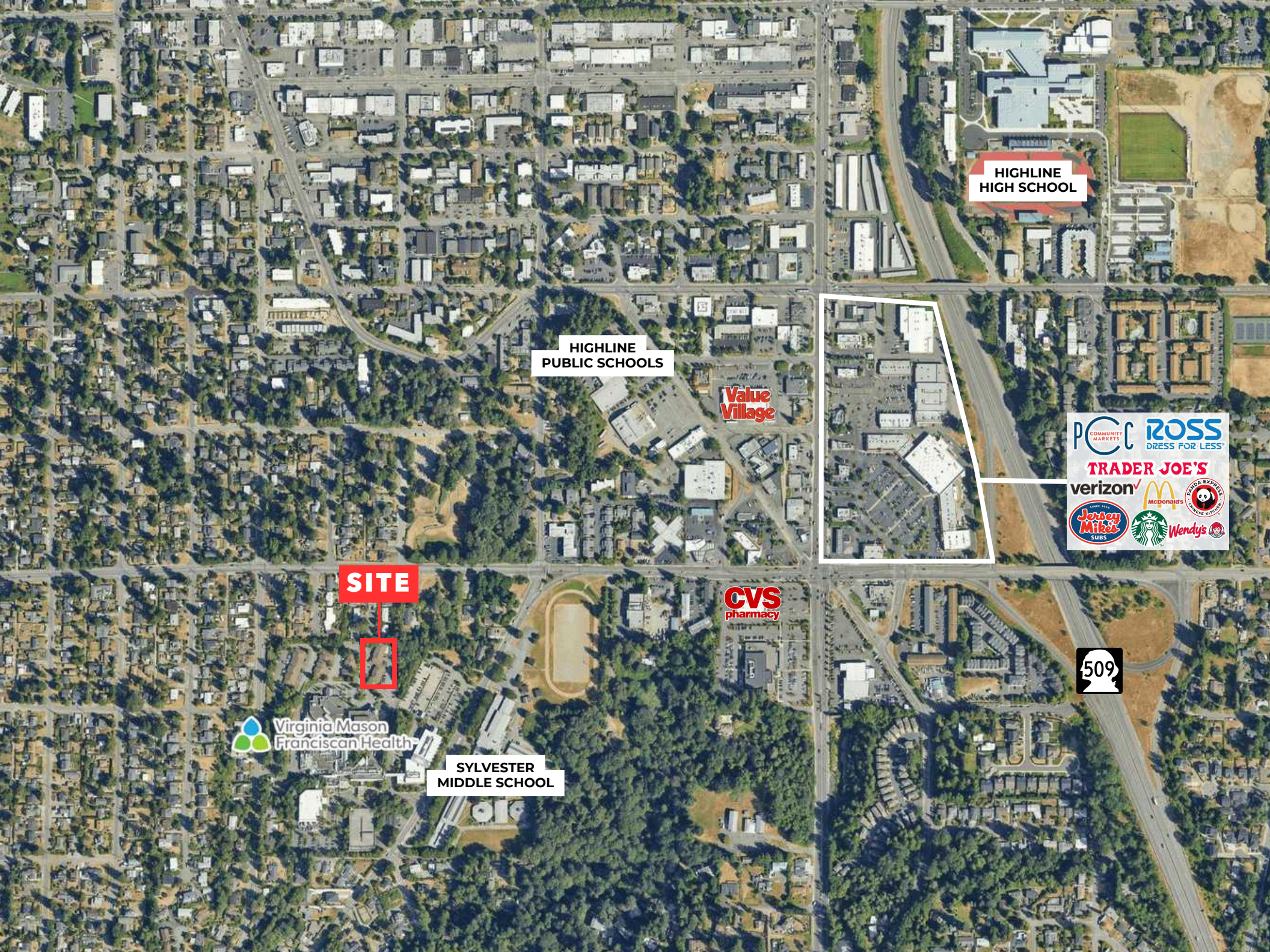
D2 - AVAILABLE
1,284 SF

	1 MILE	3 MILES	5 MILES
2026 POPULATION	9,937	46,087	101,058
2026 DAYTIME POPULATION	3,709	18,868	42,767
2026 HOUSEHOLDS	3,289	15,536	35,270
2026 AVG HH INCOME	\$135,684	\$132,558	\$134,016
2026 MEDIAN HH INCOME	\$112,642	\$108,738	\$107,807
2026 TOTAL EMPLOYEES	1,362	7,075	14,519

- Located on main hospital campus
- Flexible lease terms available
- Move-in ready
- Former Family Medicine Practice

DATA COLLECTED VIA SITESUSA

PACIFIC ASSET ADVISORS, INC.



HIGHLINE
HIGH SCHOOL

HIGHLINE
PUBLIC SCHOOLS

Value
Village

SITE

CVS
pharmacy

Virginia Mason
Franciscan Health

SYLVESTER
MIDDLE SCHOOL

PCC COMMUNITY MARKETS
ROSS DRESS FOR LESS
TRADER JOE'S
verizon
Jersey Mike's SUBS
Starbucks
McDonald's
PANDA EXPRESS
Wendy's

509



ADAM GREENBERG

SENIOR VICE PRESIDENT | PARTNER
ADAM@PAADVISORS.COM
425.503.1339



TYSON CLARKE

SENIOR VICE PRESIDENT | PARTNER
TYSON@PAADVISORS.COM
360.319.4855