

# TOK

COMMERCIAL

# 4610 N ASH STREET

OFFICE SPACE FOR LEASE / SPOKANE, WASHINGTON 99205



## CONTACT

### DREW ULRICK, SIOR

509.606.5055

drew@tokcommercial.com

### KIM MILLET

509.606.5087

kim@tokcommercial.com

## HIGHLIGHTS

North Spokane Medical Office

Ample parking

ADA accessible with elevator

On site Management

Co-tenant synergy

Dental hook ups in place

## DETAILS

SPACE	SIZE	RATE
Suite 101	1,770 SF	\$19.00/SF

<b>BLDG TYPE</b>	Office	<b>ZONING</b>	O-35
<b>BLDG SIZE</b>	13,101 SF	<b>LEASE TYPE</b>	Full Service
<b>LOT SIZE</b>	25, 180 SF		

UPDATED: 6.30.2026

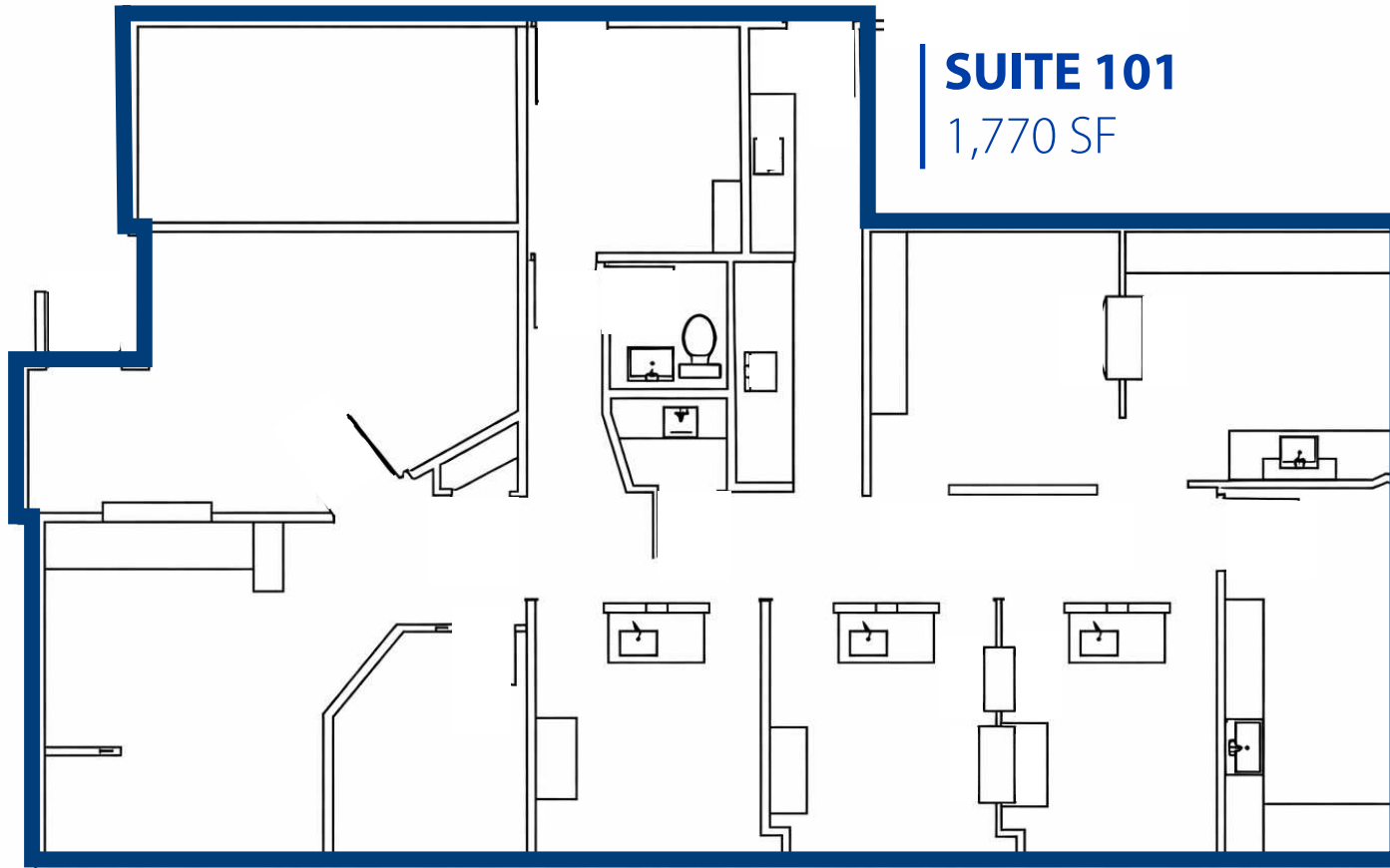
THIS PROPERTY IS EXCLUSIVELY MARKETED BY TOK INLAND NORTHWEST LLC DBA TOK COMMERCIAL

This information was obtained from sources believed reliable but cannot be guaranteed. Any opinions or estimates are used for example only.

TOKCOMMERCIAL.COM

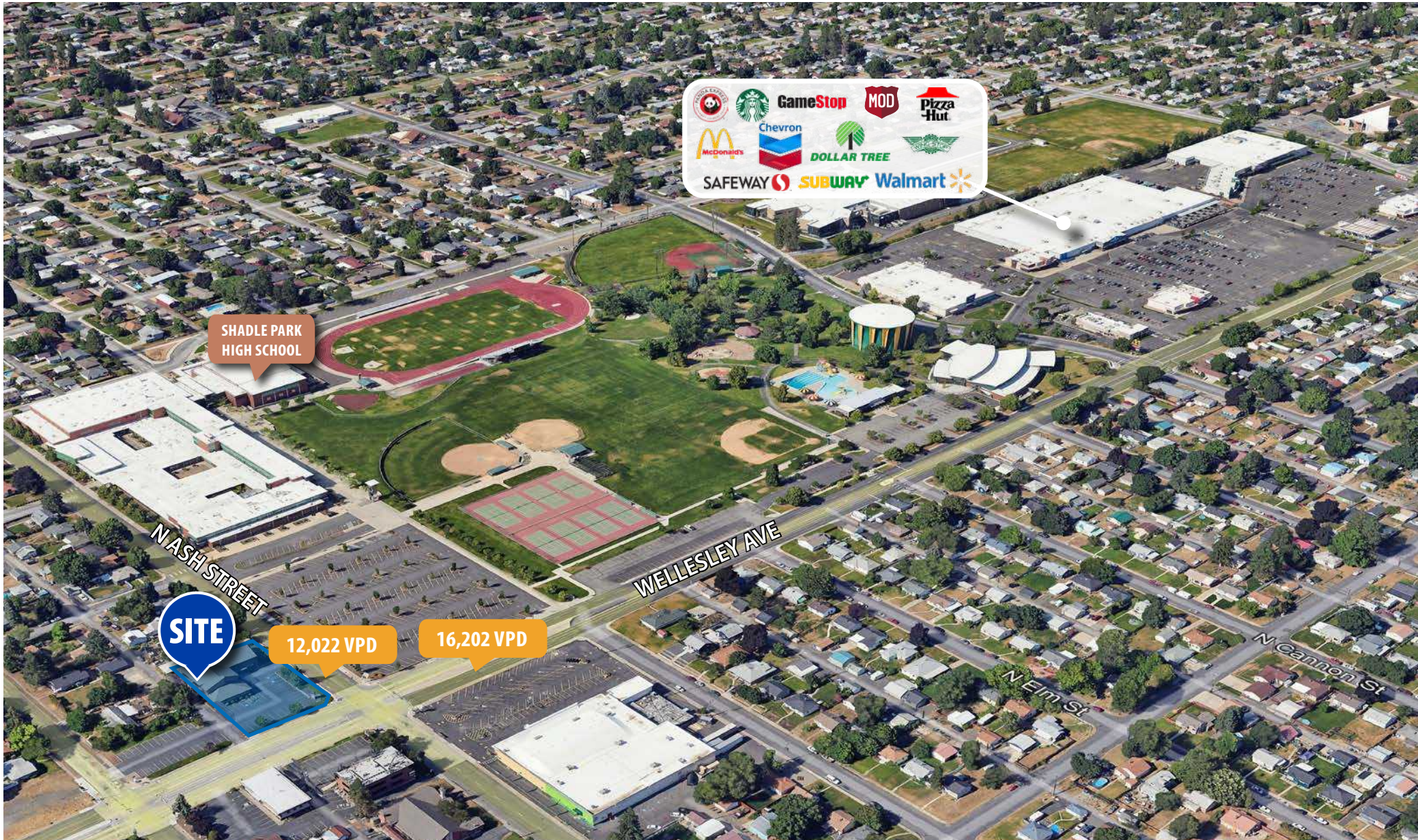
# FLOOR PLANS

## SUITE 101



# SITE MAP

EASY ACCESS OFFICE BUILDING



# AERIAL MAP CLOSE TO ALL SERVICES



1 MILE RADIUS



POPULATION  
**17,277**



TOTAL RETAIL EXPENDITURE  
**\$350.86M**



AVG. HOUSEHOLD INC.  
**\$98,826**

3 MILE RADIUS



POPULATION  
**122,422**



TOTAL RETAIL EXPENDITURE  
**\$2.35B**



AVG. HOUSEHOLD INC.  
**\$93,338**

5 MILE RADIUS



POPULATION  
**216,138**



TOTAL RETAIL EXPENDITURE  
**\$4.26B**



AVG. HOUSEHOLD INC.  
**\$96,990**

**4610 N ASH STREET**

**TOXCOMMERCIAL.COM**