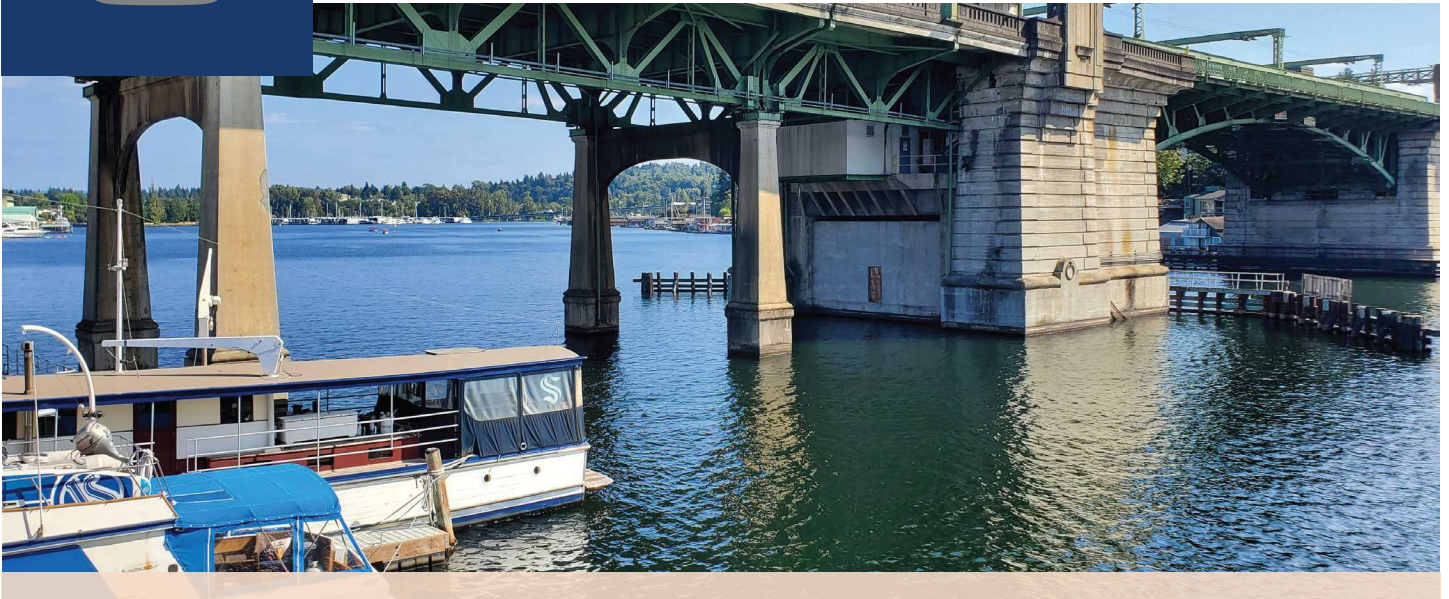
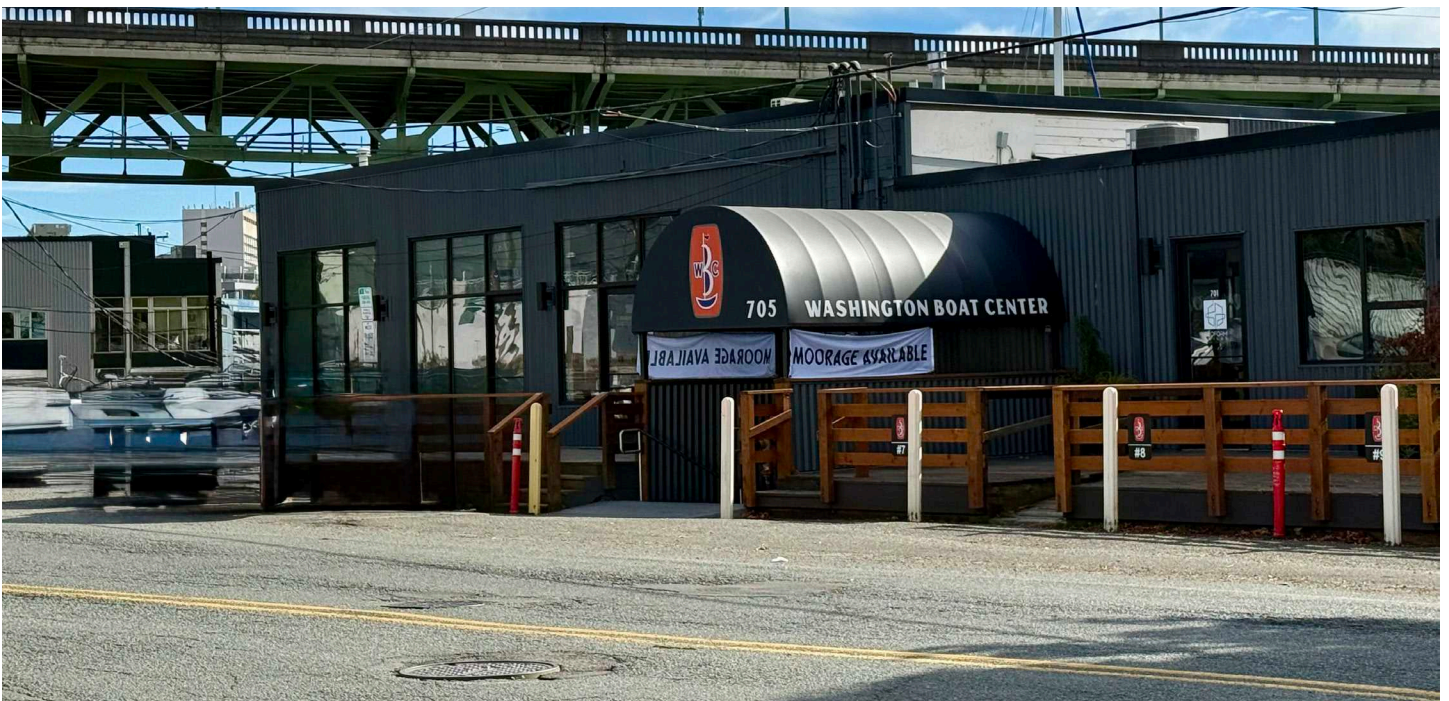




**WORK ABOVE  
THE WATER**



# **WASHINGTON BOAT CENTER**



**705 NE Northlake Way | Seattle, WA 98105**



# SOUTHERN EXPOSURE



## HAVE YOUR BOAT STANDING BY



**JENNY ARVISO**  
206.854.6496  
jenny@incityinc.com

**CHRIS LANGER**  
206.650.6361  
langer@incityinc.com

The information contained herein has been given to us by the owner or sources that we deem reliable. We have no reason to doubt its accuracy, but we do not guarantee it. Prospective tenants should carefully verify all information contained herein.

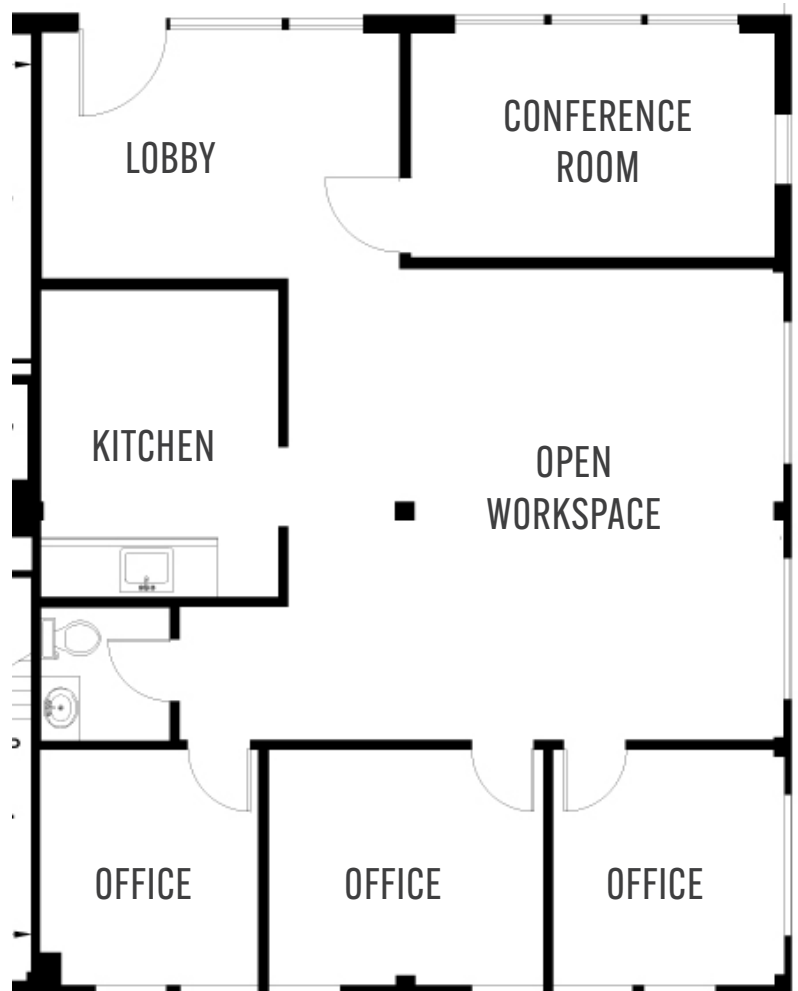
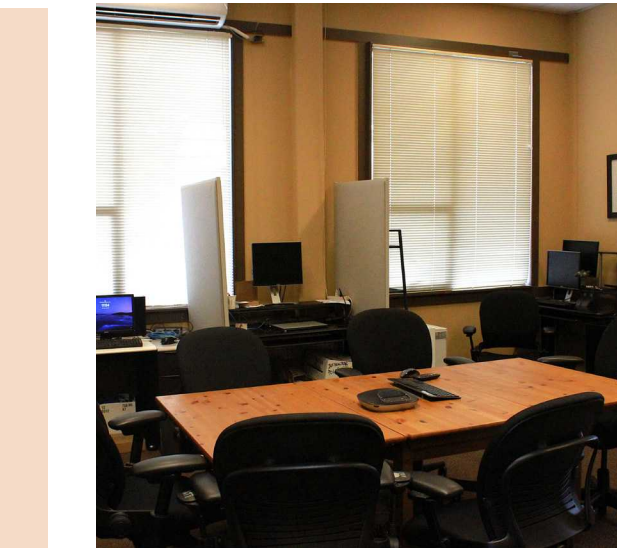


# WASHINGTON BOAT CENTER

705 NE Northlake Way  
Seattle, WA 98105

## SUITE 711 - LEVEL 1

±1,301 SF | Available Now



**JENNY ARVISO**  
206.854.6496  
jenny@incityinc.com

**CHRIS LANGER**  
206.650.6361  
langer@incityinc.com

The information contained herein has been given to us by the owner or sources that we deem reliable. We have no reason to doubt its accuracy, but we do not guarantee it. Prospective tenants should carefully verify all information contained herein.

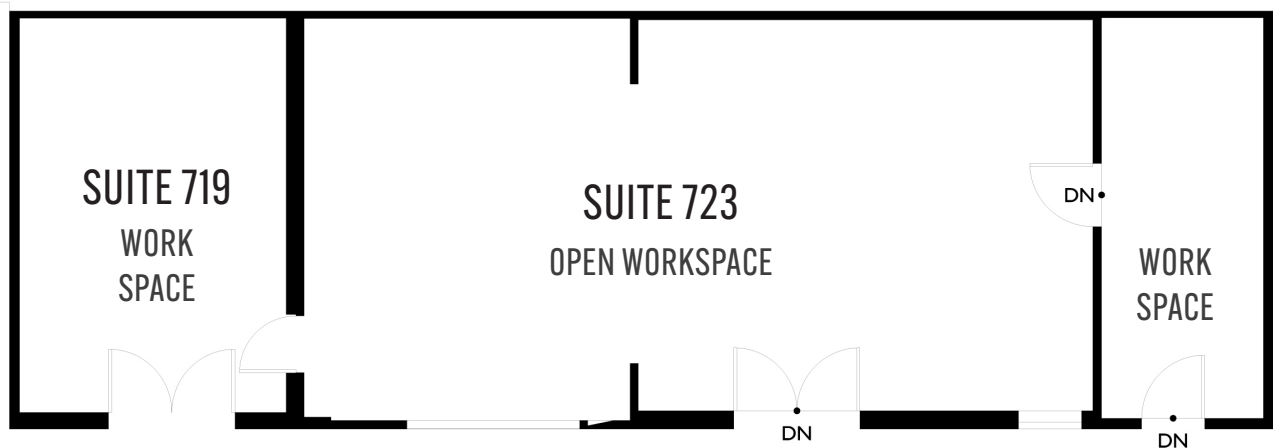


# WASHINGTON BOAT CENTER

705 NE Northlake Way  
Seattle, WA 98105

## SUITE 719

1,174 SF | Available 2027



**JENNY ARVISO**  
206.854.6496  
jenny@incityinc.com

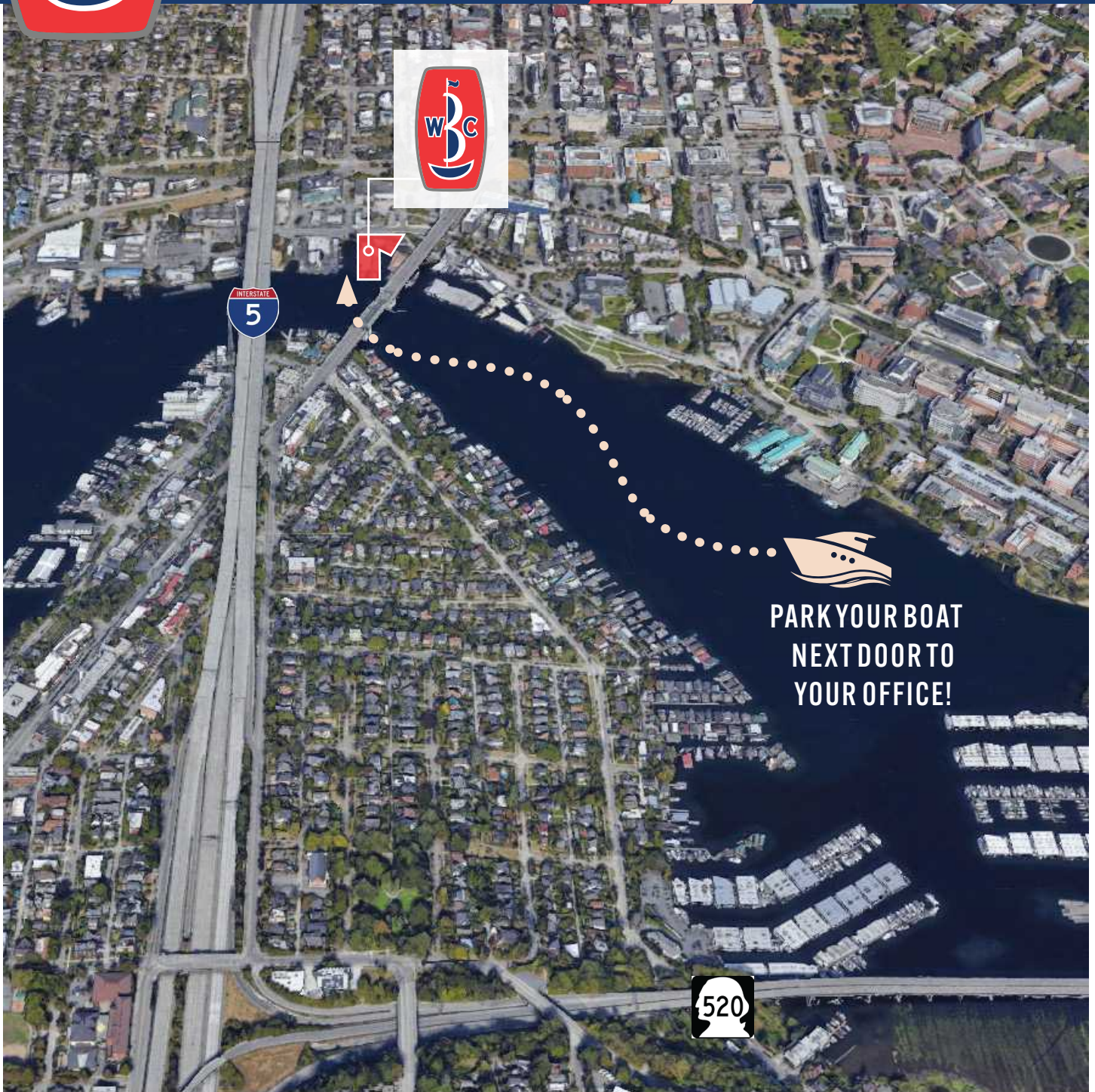
**CHRIS LANGER**  
206.650.6361  
langer@incityinc.com

The information contained herein has been given to us by the owner or sources that we deem reliable. We have no reason to doubt its accuracy, but we do not guarantee it. Prospective tenants should carefully verify all information contained herein.



# WASHINGTON BOAT CENTER

705 NE Northlake Way  
Seattle, WA 98105



**PARK YOUR BOAT  
NEXT DOOR TO  
YOUR OFFICE!**



**JENNY ARVISO**  
206.854.6496  
jenny@incityinc.com

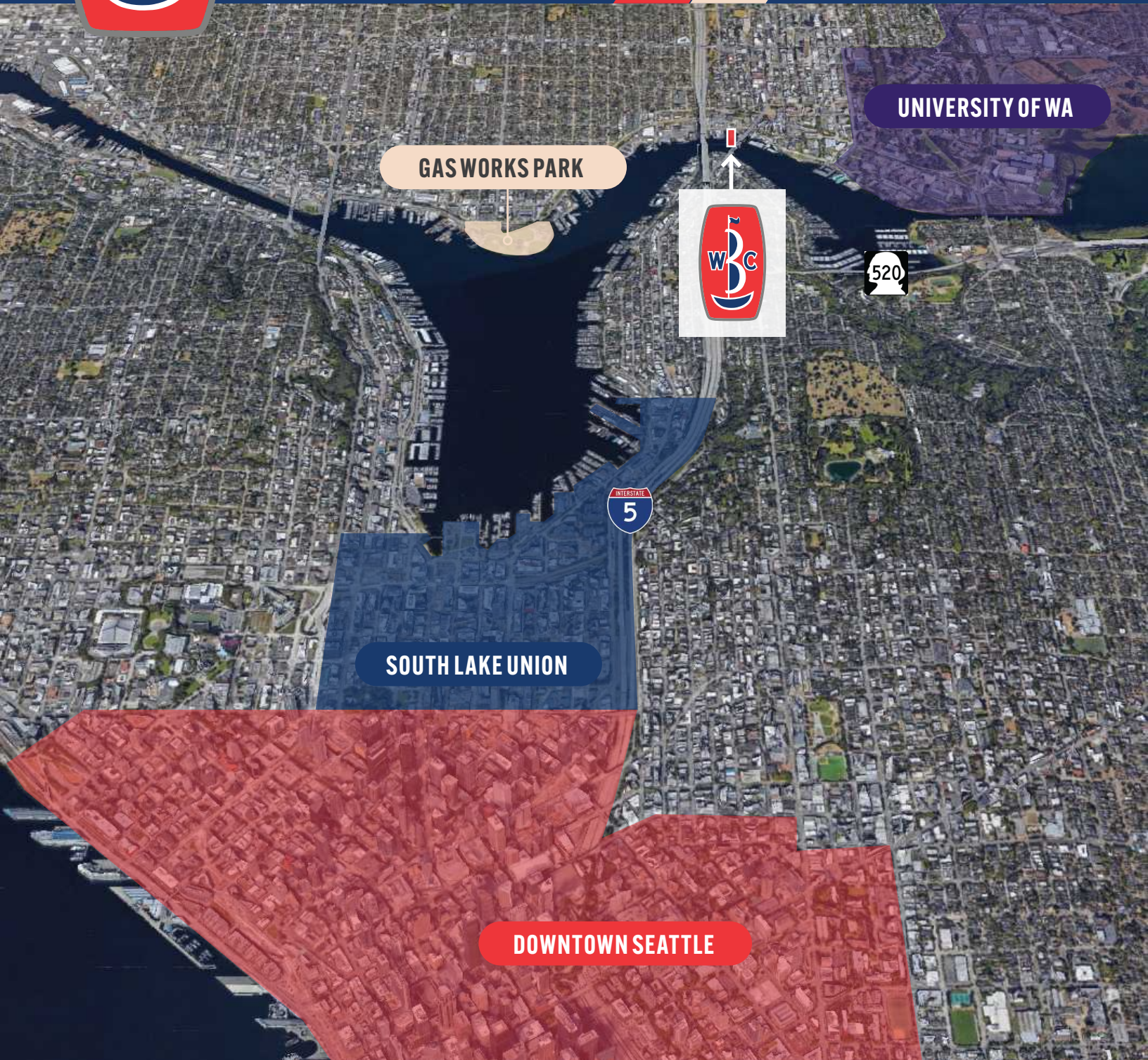
**CHRIS LANGER**  
206.650.6361  
langer@incityinc.com

The information contained herein has been given to us by the owner or sources that we deem reliable. We have no reason to doubt its accuracy, but we do not guarantee it. Prospective tenants should carefully verify all information contained herein.



# WASHINGTON BOAT CENTER

705 NE Northlake Way  
Seattle, WA 98105



GASWORKS PARK

UNIVERSITY OF WA



SOUTH LAKE UNION

DOWNTOWN SEATTLE



**JENNY ARVISO**  
206.854.6496  
jenny@incityinc.com

**CHRIS LANGER**  
206.650.6361  
langer@incityinc.com

The information contained herein has been given to us by the owner or sources that we deem reliable. We have no reason to doubt its accuracy, but we do not guarantee it. Prospective tenants should carefully verify all information contained herein.