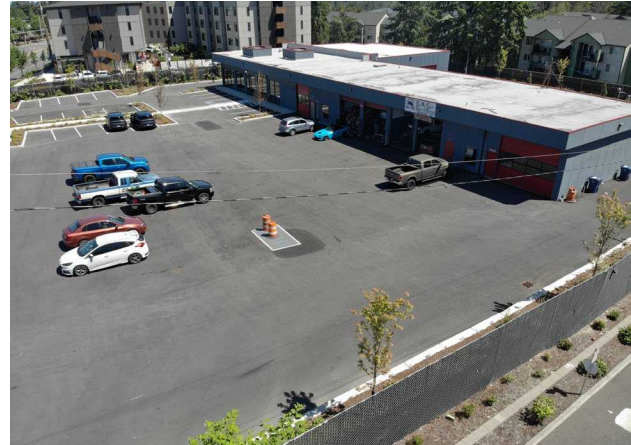




**FOR LEASE**

**27802 Pacific Hwy S**

Federal Way, WA



*Versatile warehouse/office property with fenced and paved yard, excellent I-5 access, and strong Pac Hwy visibility. Ideal for a wide range of industrial, retail, and contractor users.*

**UNIT A | 8,000 SF**

- + Includes 1,500 SF office
- + ~25,000 SF of paved and fenced yard \$0.25/SF
- + Parking for up to 70 vehicles
- + Divisible to 7,000 SF w/ 1,000 SF office

**UNIT E | 933 SF**

- + Shop space with small office
- + Roll-up door access
- + Additional yard available
- + Extra parking available

**UNIT A**

LEASE RATE BLENDED

**\$1.50/SF, NNN**

**UNIT E**

LEASE RATE

**\$2,500, NNN**

**TAMIR OHAYON**

Partner  
+1 425 586 56  
tohayon@nai-psp.com

**ITZIK MIZRAHI**

Partner  
+1 425 586 5637  
imizrahi@nai-psp.com

**ETHAN ARONOWITZ**

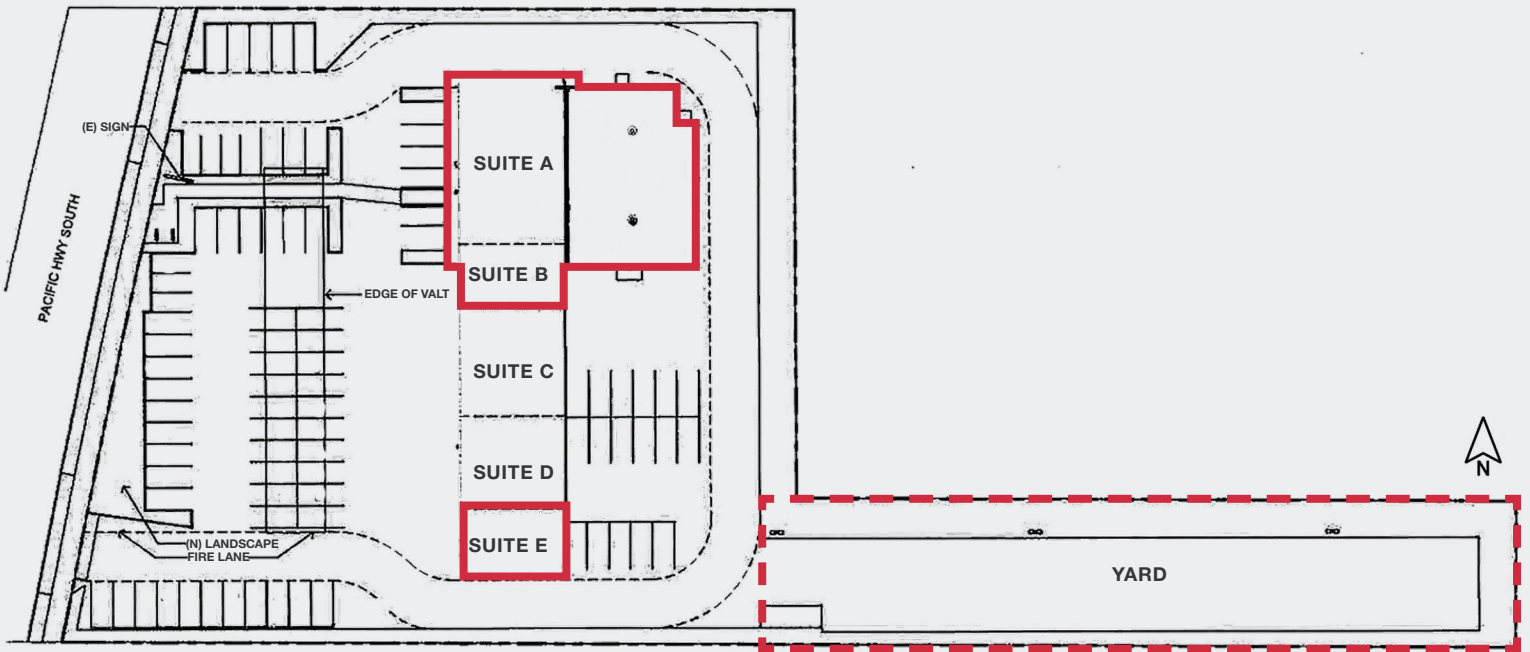
Associate  
+1 425 586 5612  
earonowitz@nai-psp.com



THE INFORMATION CONTAINED HEREIN HAS BEEN GIVEN TO US BY THE OWNER OF THE PROPERTY OR OTHER SOURCES WE DEEM RELIABLE, WE HAVE NO REASON TO DOUBT ITS ACCURACY, BUT WE DO NOT GUARANTEE IT. ALL INFORMATION SHOULD BE VERIFIED PRIOR TO PURCHASE OR LEASE.



## SITE PLAN



**TAMIR OHAYON**

Partner  
+1 425 586 56  
tohayon@nai-psp.com

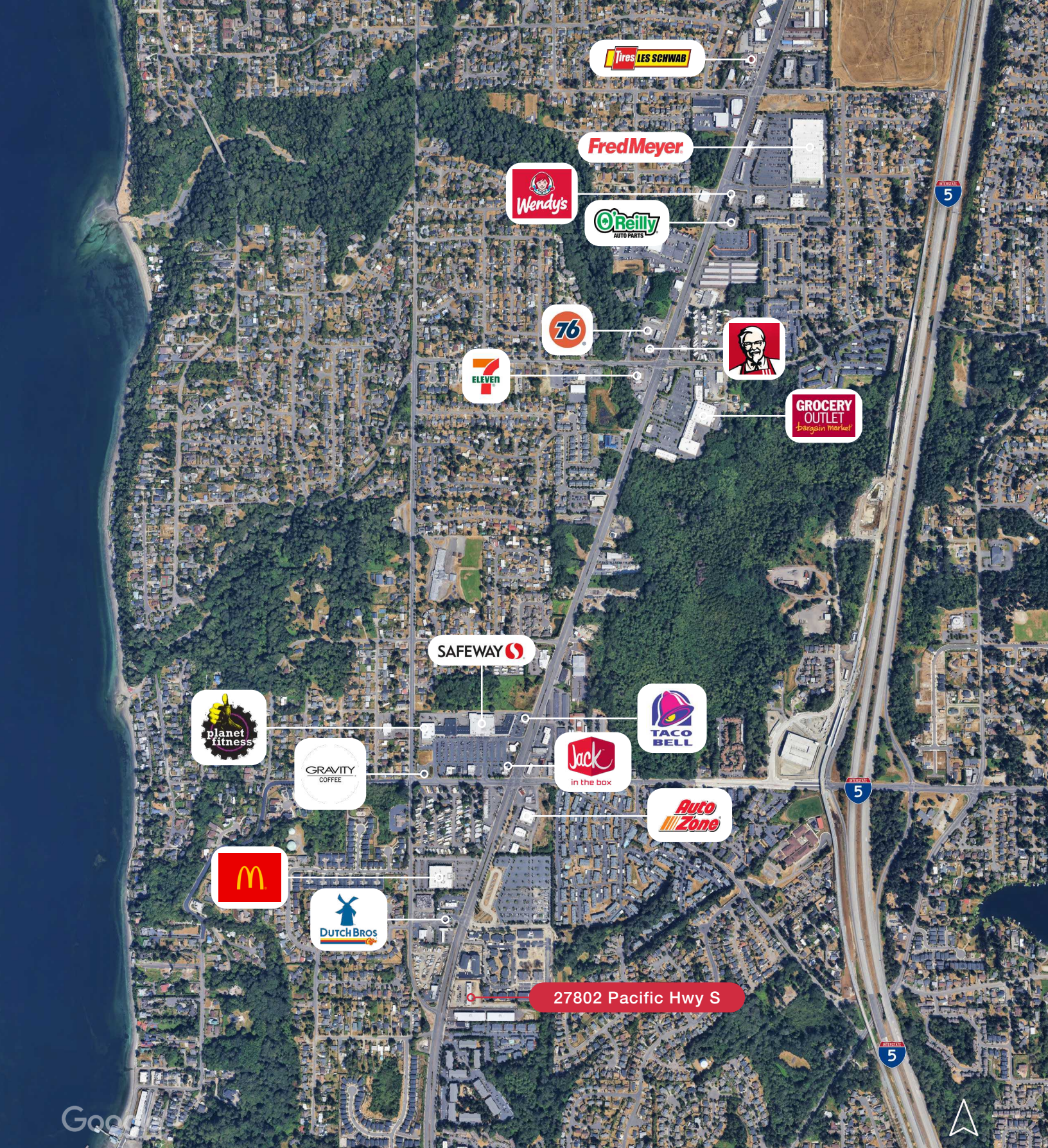
**ITZIK MIZRAHI**

Partner  
+1 425 586 5637  
imizrahi@nai-psp.com

**ETHAN ARONOWITZ**

Associate  
+1 425 586 5612  
earonowitz@nai-psp.com





**TAMIR OHAYON**  
 Partner  
 +1 425 586 56  
 tohayon@nai-psp.com

**ITZIK MIZRAHI**  
 Partner  
 +1 425 586 5637  
 imizrahi@nai-psp.com

**ETHAN ARONOWITZ**  
 Associate  
 +1 425 586 5612  
 earonowitz@nai-psp.com



# Demographics



## 27802 PACIFIC HWY S, FEDERAL WAY, WA

	1 MILE	3 MILES	5 MILES
Population	16,979	95,771	226,385
2030 Population	17,179	97,286	231,133
Households	6,198	33,620	81,704
Median Age	36.6	39.0	38.1
Median HH Income	\$71,603	\$90,558	\$86,739

**TAMIR OHAYON**  
 Partner  
 +1 425 586 56  
 tohayon@nai-pp.com

**ITZIK MIZRAHI**  
 Partner  
 +1 425 586 5637  
 imizrahi@nai-pp.com

**ETHAN ARONOWITZ**  
 Associate  
 +1 425 586 5612  
 earonowitz@nai-pp.com

