

FOR LEASE

10,733-27,699 SF WAREHOUSE AVAILABLE

7835-7845 S 212th St | Kent, WA



**NEWMARK**

**CAM WARREN**  
cam.warren@nmrk.com  
425-362-1395

**TAYLOR HOFF, SIOR**  
taylor.hoff@nmrk.com  
425-362-1388

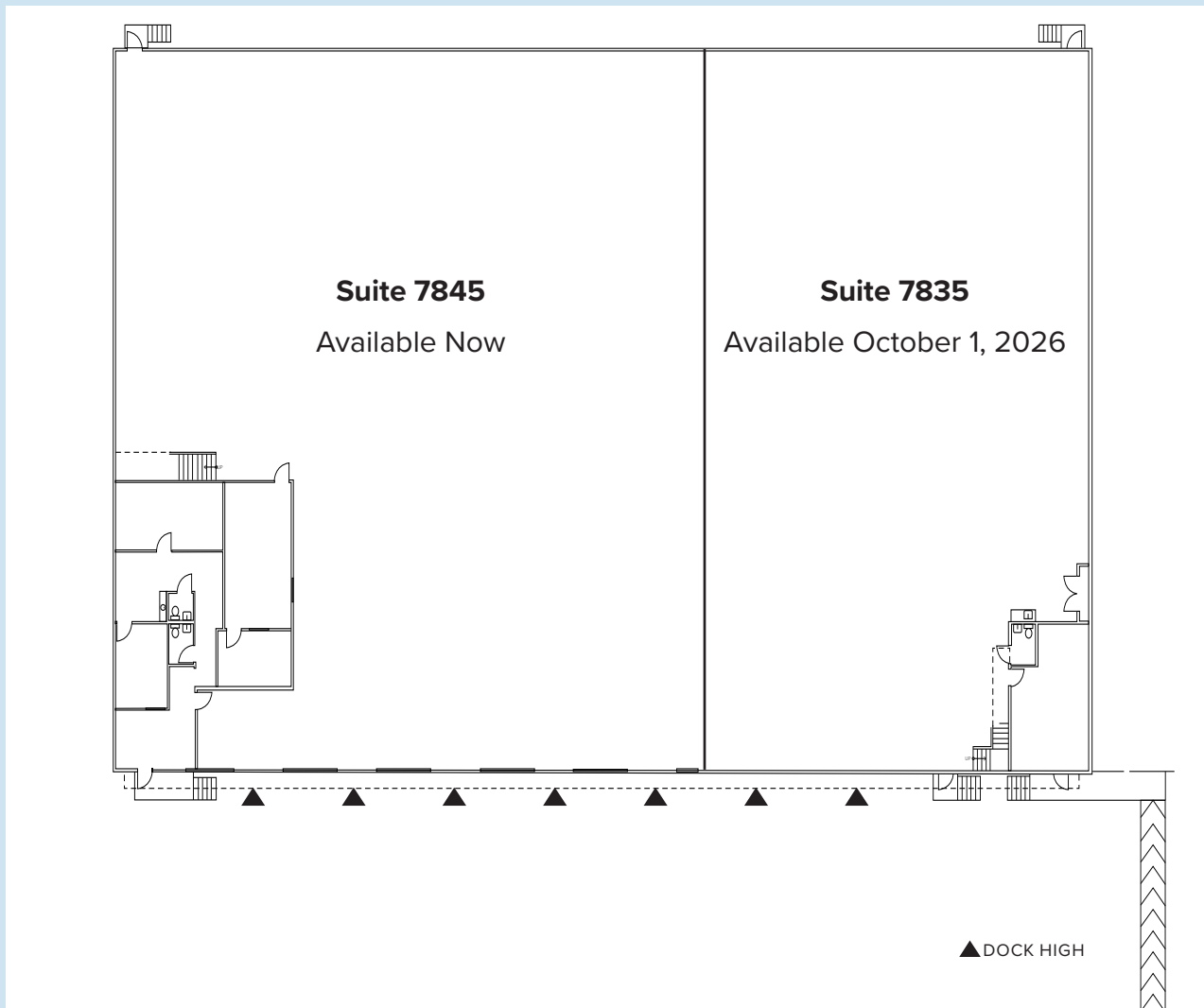
**THAD MALLORY, SIOR**  
thad.mallory@nmrk.com  
425-362-1410

FOR LEASE

10,733-27,699 SF WAREHOUSE AVAILABLE

7835-7845 S 212th St | Kent, WA

## FLOOR PLAN



## BUILDING DETAILS

### AVAILABLE

27,699 SF (3,500 SF Office)

- Suite 7845: 16,966 SF (2,494 SF Office)
- Suite 7835: 10,733 SF (1,006 SF Office)

### CLEAR HEIGHT

24'

### LOADING

7 Dock High Doors

- Suite 7845: 5 Dock High Doors
- Suite 7835: 2 Dock High Doors

## BUILDING HIGHLIGHTS

- Fully Sprinklered
- Easy Access to SR 167 and I-5
- Frontage on S 212th St
- Prominent Signage on 212th Available

**NEWMARK**

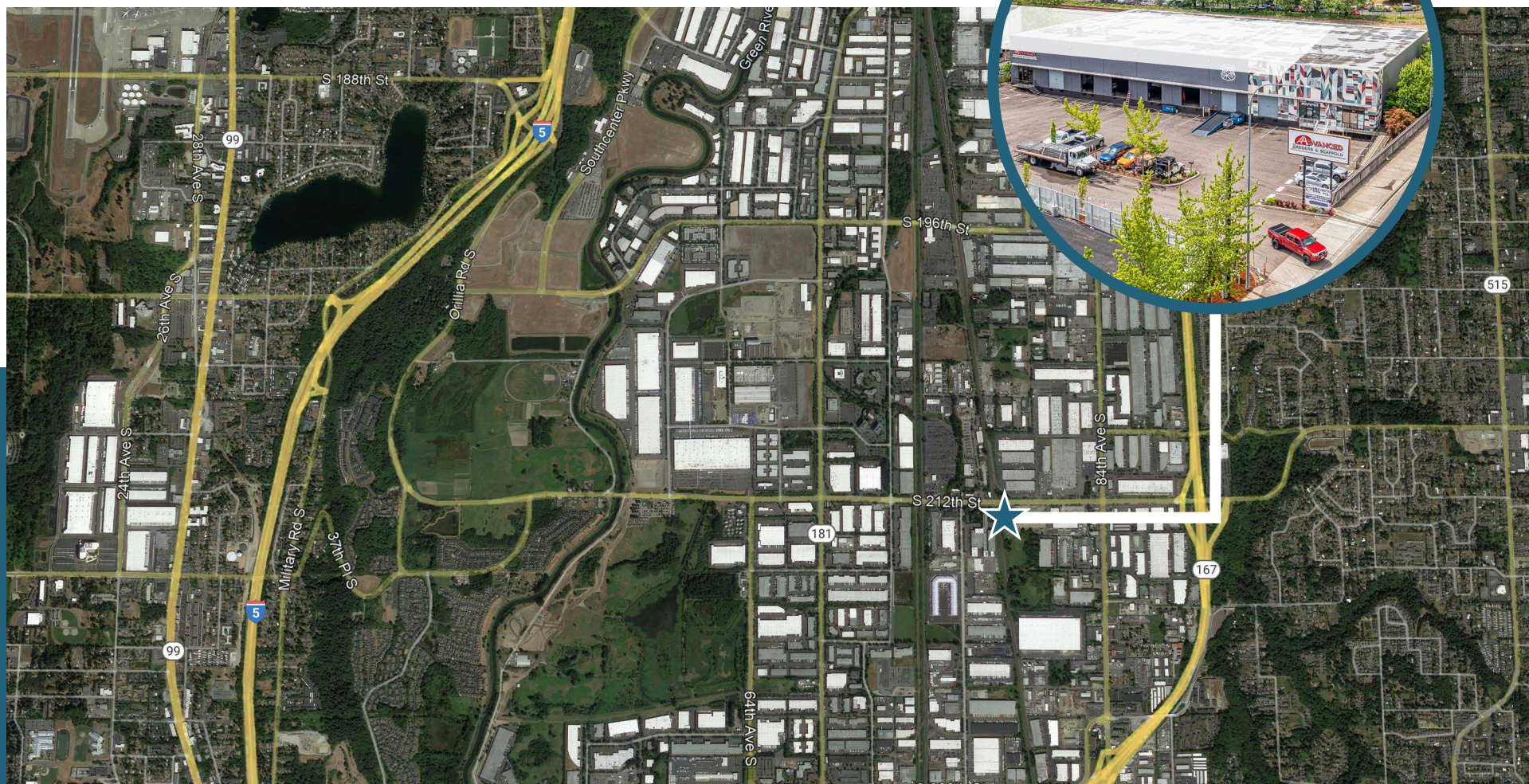
FOR LEASE

# 10,733-27,699 SF WAREHOUSE AVAILABLE

7835-7845 S 212th St | Kent, WA

## DRIVE TIMES

SEA International Airport	8 Miles
Port of Seattle	20 Miles
Port of Tacoma	20 Miles



The information contained herein has been obtained from sources deemed reliable but has not been verified and no guarantee, warranty or representation, either express or implied, is made with respect to such information. Terms of sale or lease and availability are subject to change or withdrawal without notice.