

**OFFICE BUILDING  
FOR LEASE**

# EMPIRE STATE BUILDING

905 W. Riverside Ave | Spokane, WA 99201

***VIEW DRONE FOOTAGE***

**Exclusively listed by:**

Alicia Barbieri  
President  
509.344.4902  
alicia.barbieri@g-b.com

JJ Robbins  
Commercial Broker &  
Leasing Manager  
509.344.4915  
jj.robbins@g-b.com



# Property Summary

## Description

The Empire State Building is a charming building with historical character located in the heart of Downtown Spokane. The property is directly across from the Federal Building and Post Office, and is only one block from RiverPark Square. This office building offers classic views of downtown and is within walking distance of Riverfront Park.



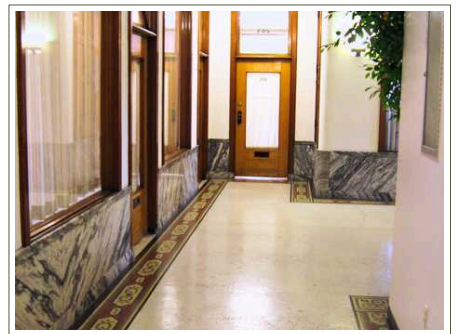
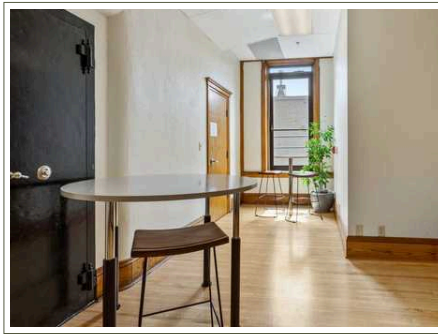
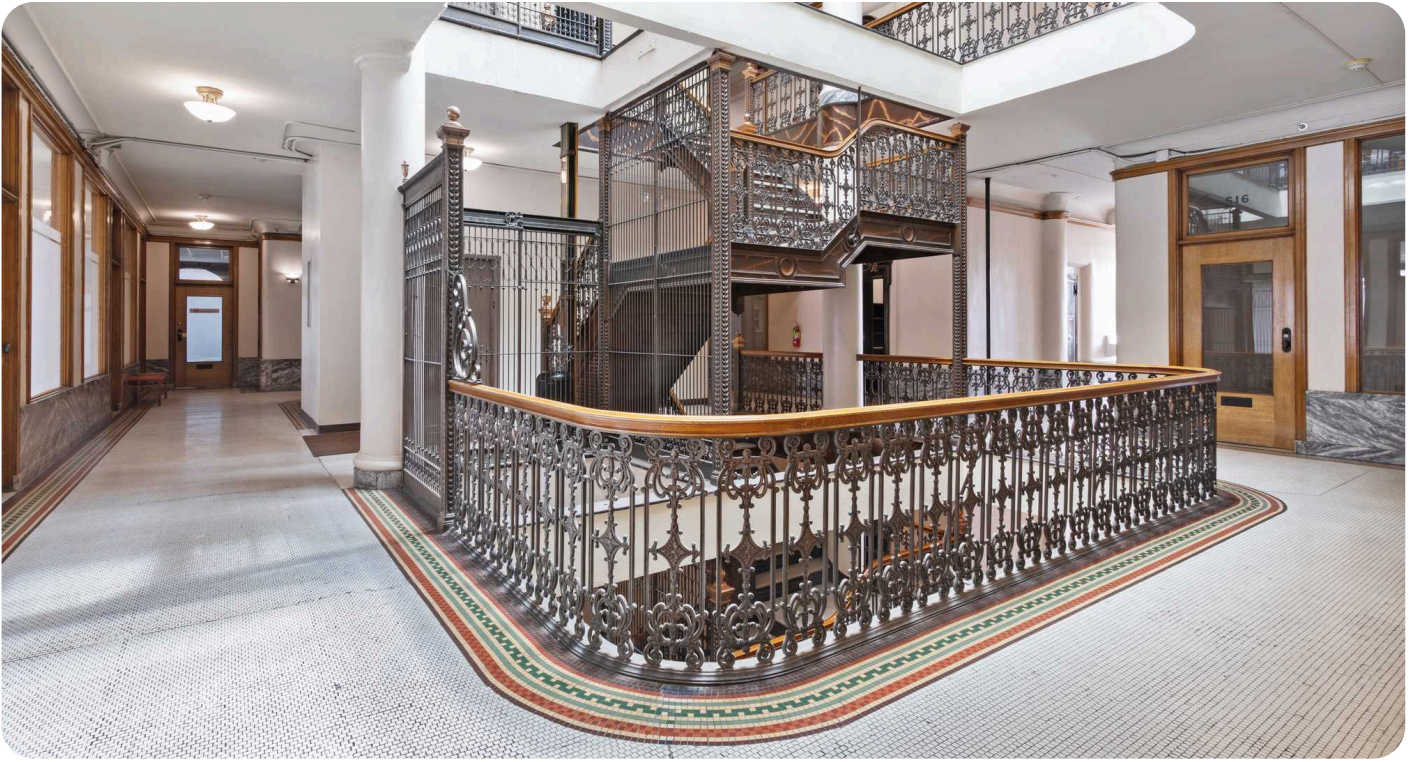
## Available Spaces

SPACES	RATE	SIZE
SUITE 101	\$2,700/MONTH	1,845 SF
SUITE 103	\$3,800/MONTH AVAILABLE OCT 1, 2026	2,715 SF
SUITE 208	\$430-3,150/MONTH	245 - 2,157 SF
SUITE 301	\$855/MONTH	595 SF
SUITE 302	\$695/MONTH	488 SF
SUITE 310	\$2,425/MONTH	1,619 SF
SUITE 316	\$575/MONTH	400 SF
SUITE 507	\$480/MONTH	325 SF
SUITE 510	\$1,865/MONTH	1,262 SF
SUITE 601	\$1,650/MONTH	1,131 SF

Alicia Barbieri  
President  
509.344.4902  
alicia.barbieri@g-b.com

JJ Robbins  
Commercial Broker &  
Leasing Manager  
509.344.4915  
jj.robins@g-b.com





## Property Features



Multiple layouts for different office needs



Prime Location



Onsite Manager and Maintenance



Storage Room Available for Use



Building Lounge /Break Room



Building Conference Room

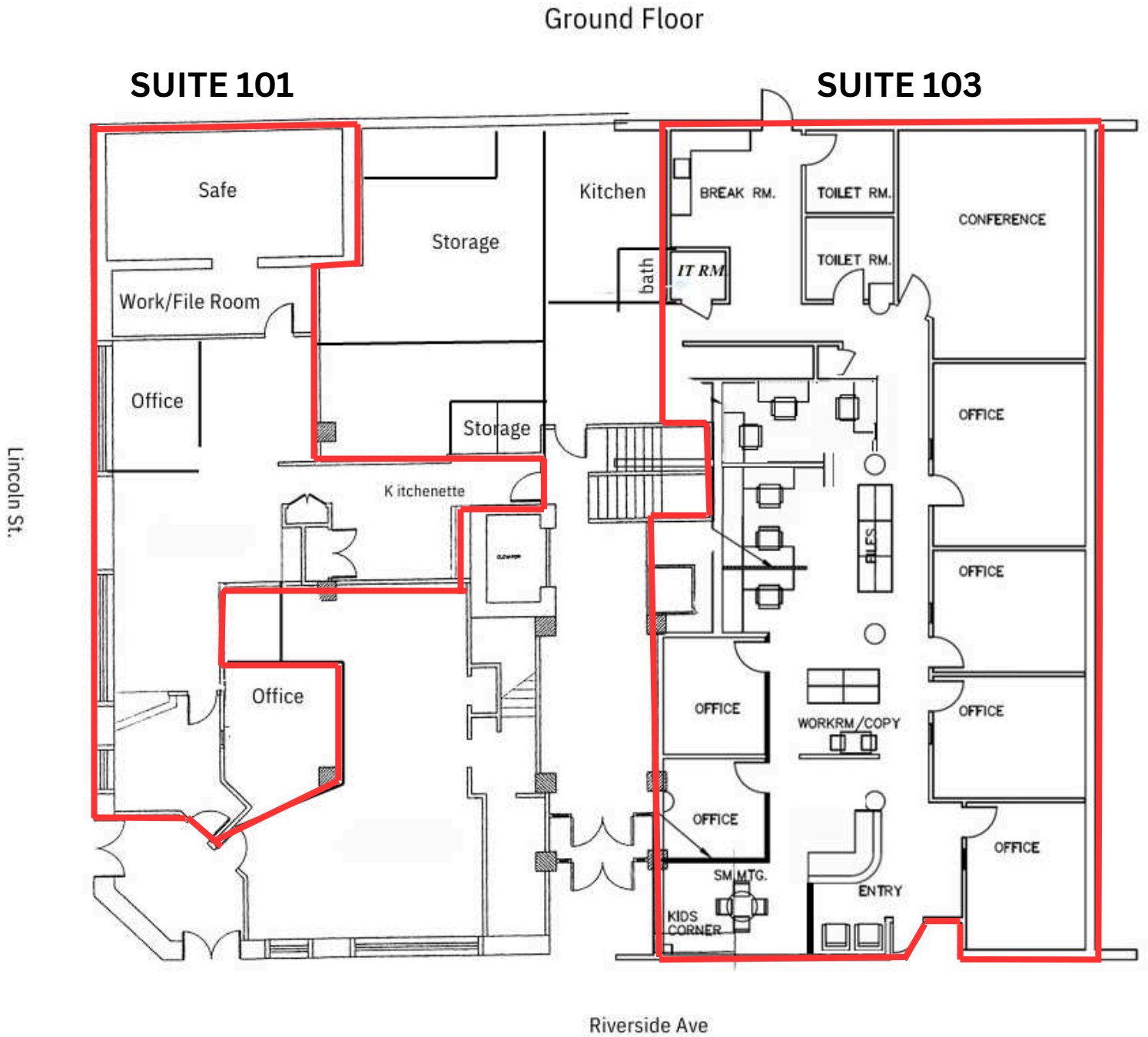


24/7 Access

Alicia Barbieri  
President  
509.344.4902  
alicia.barbieri@g-b.com

JJ Robbins  
Commercial Broker &  
Leasing Manager  
509.344.4915  
jj.robbs@g-b.com





Alicia Barbieri  
President  
509.344.4902  
alicia.barbieri@g-b.com

JJ Robbins  
Commercial Broker &  
Leasing Manager  
509.344.4915  
jj.robbs@g-b.com

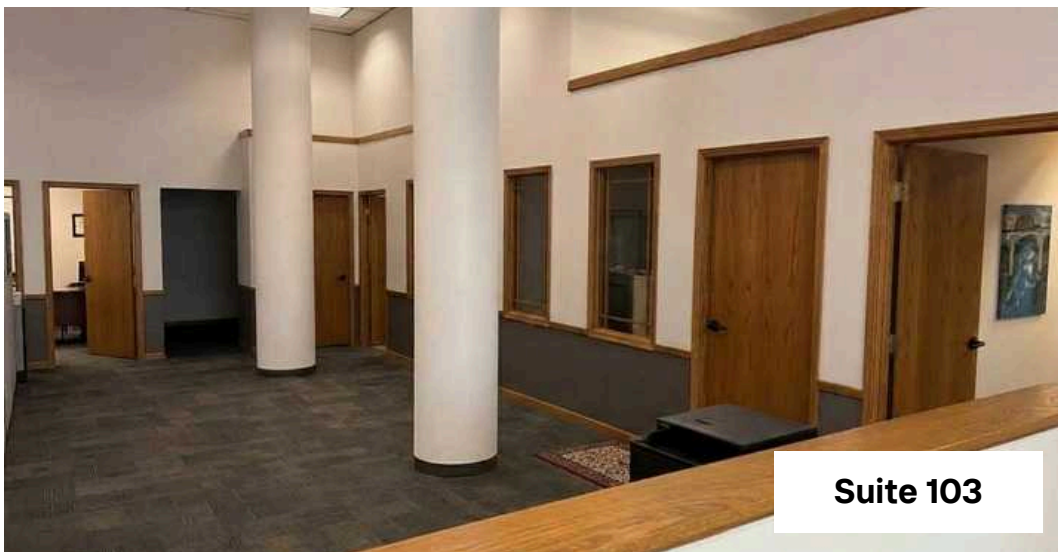




Suite 103



Suite 103

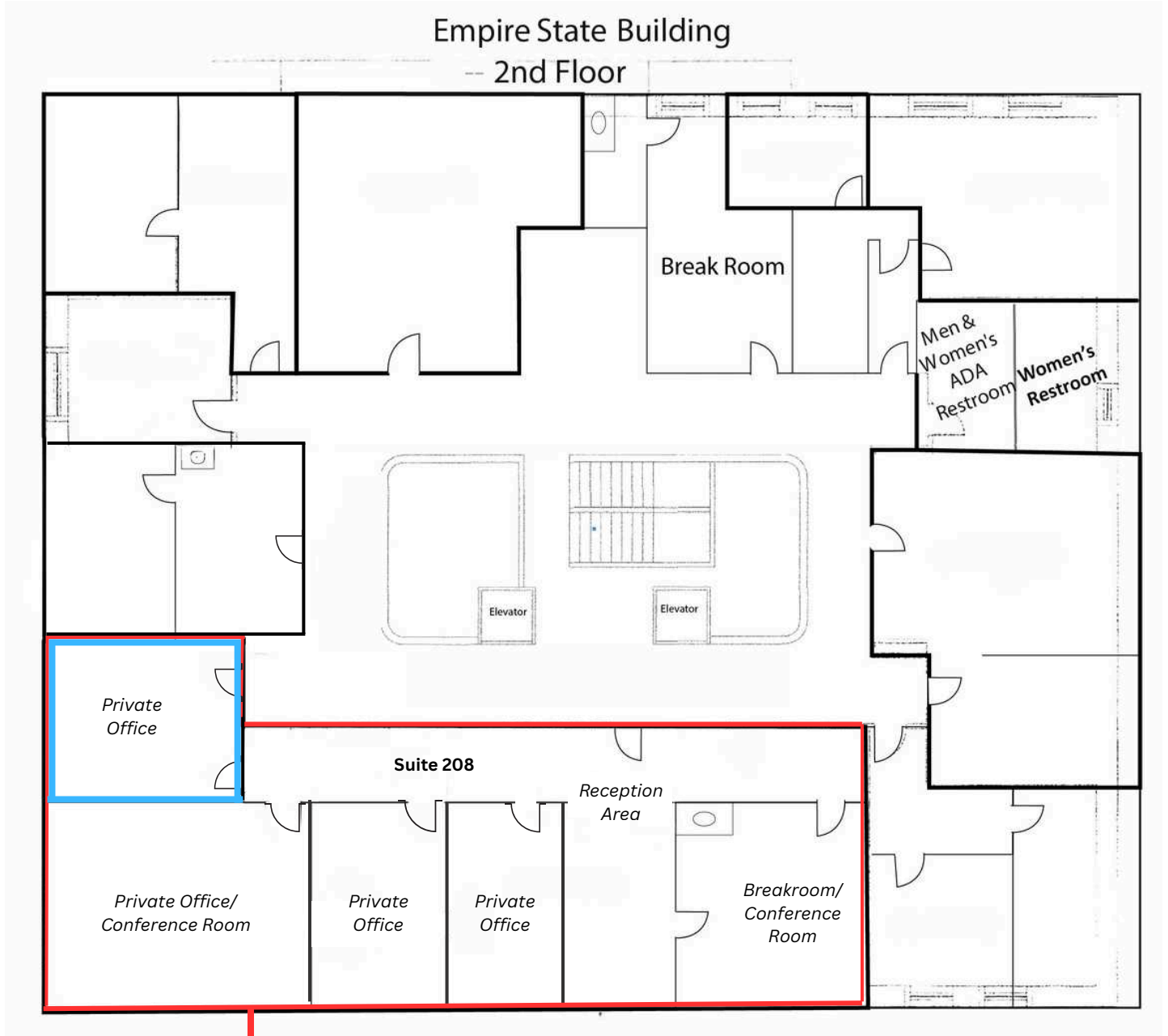


Suite 103

Alicia Barbieri  
President  
509.344.4902  
alicia.barbieri@g-b.com

JJ Robbins  
Commercial Broker &  
Leasing Manager  
509.344.4915  
jj.robbsins@g-b.com



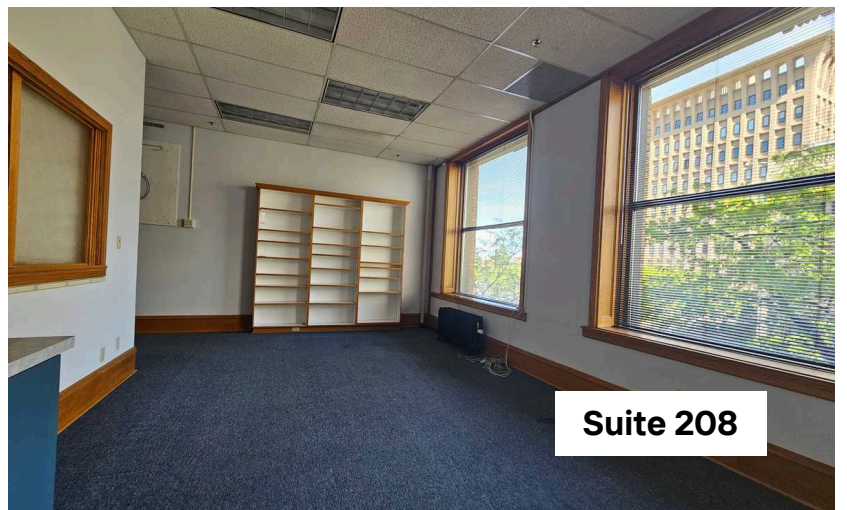


Suite 208 can be demised

Alicia Barbieri  
President  
509.344.4902  
alicia.barbieri@g-b.com

JJ Robbins  
Commercial Broker &  
Leasing Manager  
509.344.4915  
jj.robbsins@g-b.com





Alicia Barbieri  
President  
509.344.4902  
alicia.barbieri@g-b.com

JJ Robbins  
Commercial Broker &  
Leasing Manager  
509.344.4915  
jj.robbsins@g-b.com





Alicia Barbieri  
President  
509.344.4902  
alicia.barbieri@g-b.com

JJ Robbins  
Commercial Broker &  
Leasing Manager  
509.344.4915  
jj.robbsins@g-b.com

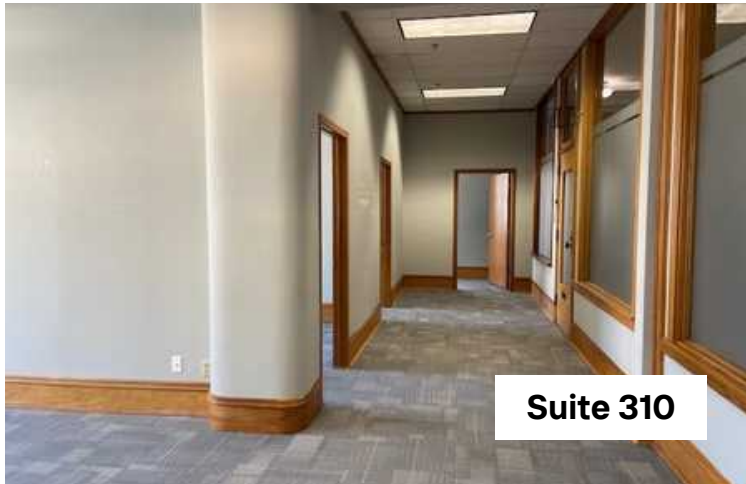




Suite 301



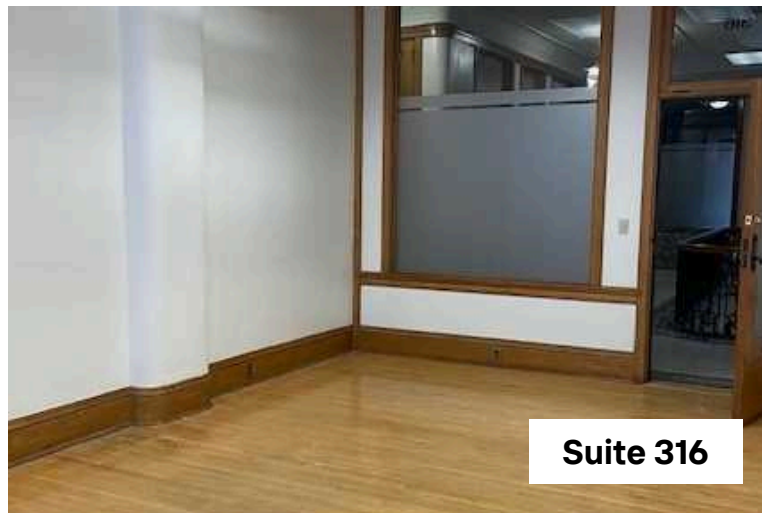
Suite 302



Suite 310



Suite 310

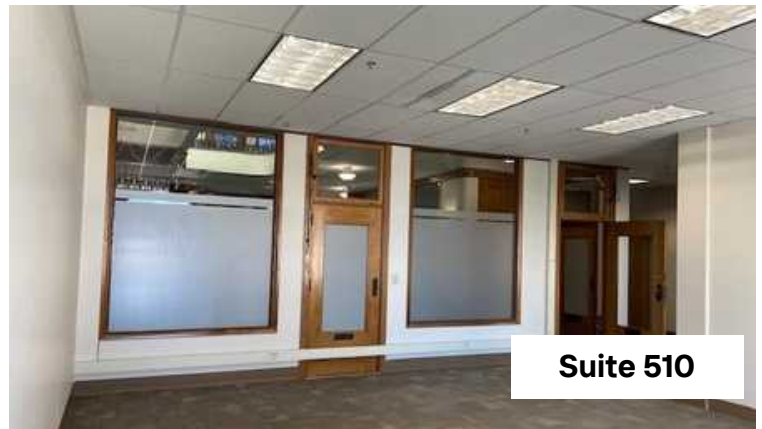


Suite 316

Alicia Barbieri  
President  
509.344.4902  
alicia.barbieri@g-b.com

JJ Robbins  
Commercial Broker &  
Leasing Manager  
509.344.4915  
jj.robbins@g-b.com

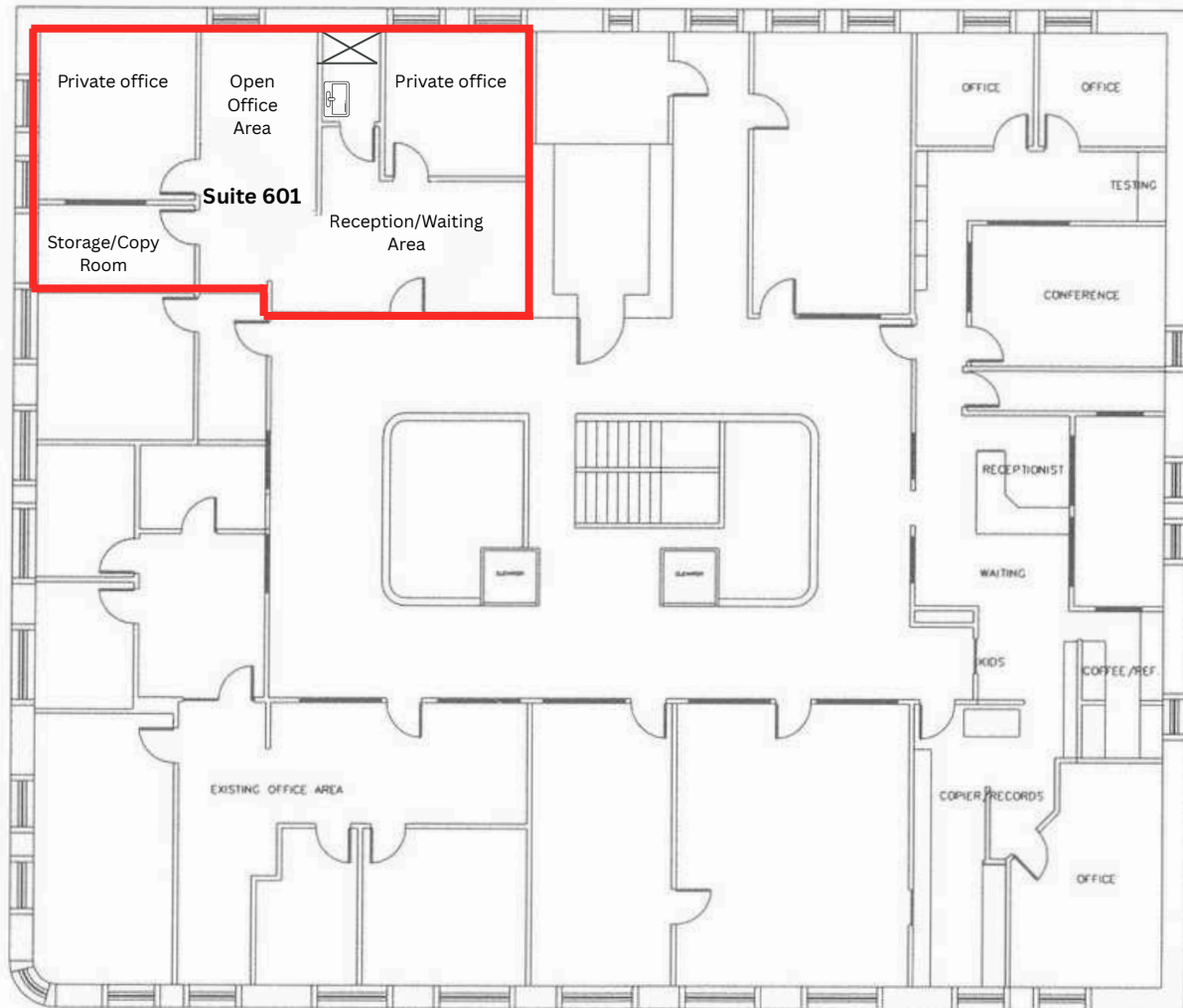




Alicia Barbieri  
President  
509.344.4902  
alicia.barbieri@g-b.com

JJ Robbins  
Commercial Broker &  
Leasing Manager  
509.344.4915  
jj.robbsins@g-b.com





GREAT WESTERN BLDG

6TH FLOOR



Alicia Barbieri  
President  
509.344.4902  
alicia.barbieri@g-b.com

JJ Robbins  
Commercial Broker &  
Leasing Manager  
509.344.4915  
jj.robbs@g-b.com



# LOCATION OVERVIEW

Spokane, Washington



International Events



Outdoor Activities



Entertainment

**Spokane, Washington, is the second largest city in the state, located in the eastern part of Washington, along the Spokane River.**

- ✓ Home of the largest 3on3 outdoor basketball tournament, Hoopfest, and Bloomsday, Spokane's iconic annual 12K race.
- ✓ There are 76 lakes and rivers within a 50-mile radius of Downtown Spokane, offering an abundance of outdoor activities.
- ✓ The city hosts a variety of festivals, concerts and shows, including internationally recognized Broadway tours.
- ✓ The Spokane City Line is a brand new 6-mile bus route, connecting Browne's Addition to local universities, like SCC and Gonzaga.

Alicia Barbieri  
President  
509.344.4902  
alicia.barbieri@g-b.com

JJ Robbins  
Commercial Broker &  
Leasing Manager  
509.344.4915  
jj.robbs@g-b.com





# AERIAL MAP

*General Warranty Disclaimer: G&B makes no warranties, representations, or guarantees as to Seller/Owner's supplied information or the Property itself. G&B disclaims all warranties (express and implied) as to the Property and Seller/Owner's statements/information about the Property.*

*Buyer/Lessee shall not rely on Property information supplied by Seller/Owner or G&B. Buyer/Lessee shall conduct its own due diligence to verify any information and the Property's suitability for specific or general purposes.*

*Copyright information G&B respects the intellectual property of others and its Digital Millennium Copyright Act.*

**Alicia Barbieri**  
 President  
 509.344.4902  
 alicia.barbieri@g-b.com

**JJ Robbins**  
 Commercial Broker &  
 Leasing Manager  
 509.344.4915  
 jj.robbins@g-b.com

