

BEL-KIRK 520

11120-11130 NE 33rd Place

NEWMARK

JOE LYNCH
Executive Managing Director
425.362.1399
joe.lynch@nmrk.com

DAN HARDEN
Senior Managing Director
425.362.1393
dan.harden@nmrk.com

BUILDING HIGHLIGHTS



Unparalleled access with immediate proximity to SR-520 and I-405, and mass-transit accessible from all Seattle area neighborhoods via the South Kirkland Park & Ride.



Valued central Eastside location that is equidistant to downtown Bellevue, Redmond and Kirkland with corporate neighbors, such as, Amazon, Microsoft, Google and Facebook



Nearby local biking routes, including the Cross-Kirkland Corridor and Bellevue Extension and the SR-520 Trail, accessible via the vast Seattle area biking trail network.



“The Hub” tenant amenity space (pictured to the right), featuring self-service deli (stocked daily), a seating bar, large screen TV and roll up doors that lead to additional outdoor seating on the plaza. Available daily and may be reserved upon request.



Strong local demographics with access to a highly educated workforce



Exterior sport court with indoor showers and daily use lockers.



CENTRAL LOCATION



Future Eastlink Light Rail



**BEL-KIRK
520**



Bel-Kirk 520 is located in the center of it all, where I-405 meets State Route 520, creating a gateway between Downtown Bellevue, Kirkland and the under construction Spring District leading to the Bel-Red neighborhood.

BUILDING DETAILS

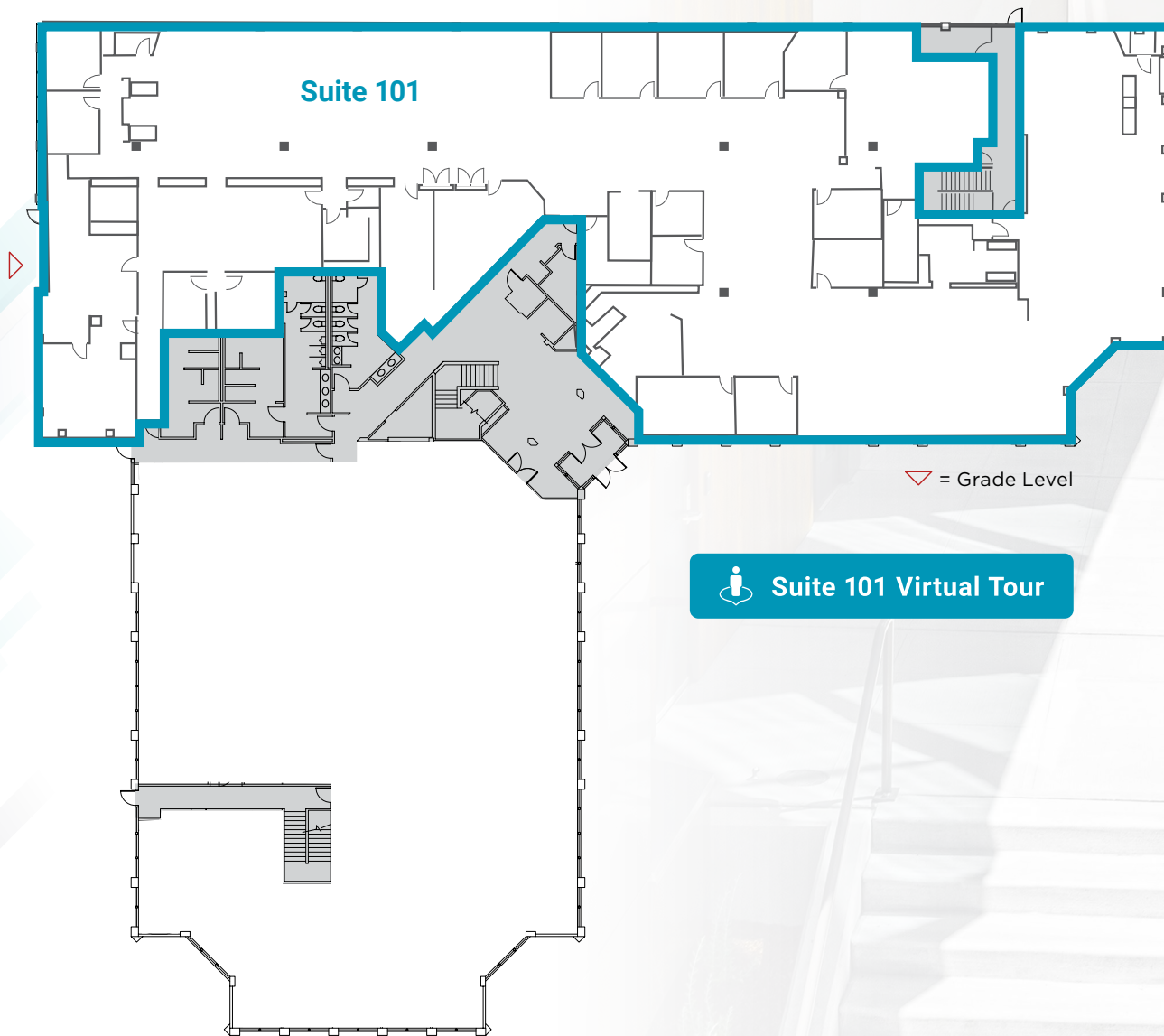


360°
Virtual Tour

| | |
|-----------------------------|---|
| Property Addresses | Building 1: 11120 NE 33rd Pl Building 2: 11130 NE 33rd Pl Bellevue WA, 98004 |
| Campus Size | 94,221 SF |
| Year Built/Renovated | 1988, Renovated 2016-2018 |
| Signage | Tenant signage on building facade above main entrances available subject to requirements and restrictions |
| Floors | 2 |
| Parking | Free surface parking offered at a ratio of 3.7 stalls per 1,000 square feet leased |
| Freeway Access | Quick access to I-405, SR-520 & South Kirkland Park & Ride |
| Communication | Comcast/Xfinity and Frontier with fiber optic service available. |
| Electrical | 277/480Volt, 3 Phase |
| Elevators | 2 Dover hydraulic elevators |
| HVAC | Packaged rooftop units. After-hours HVAC available on demand |

CURRENT AVAILABILITIES

Building 1
Suite 101 | 17,624 RSF
Available Now



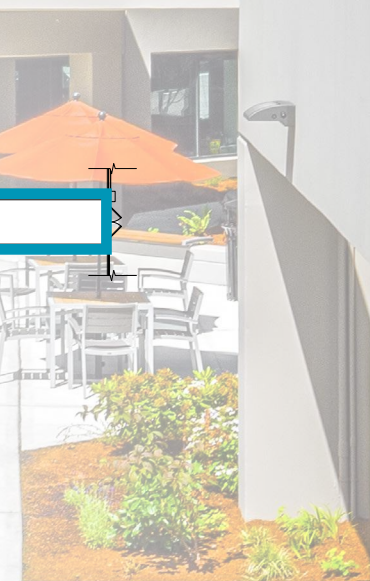
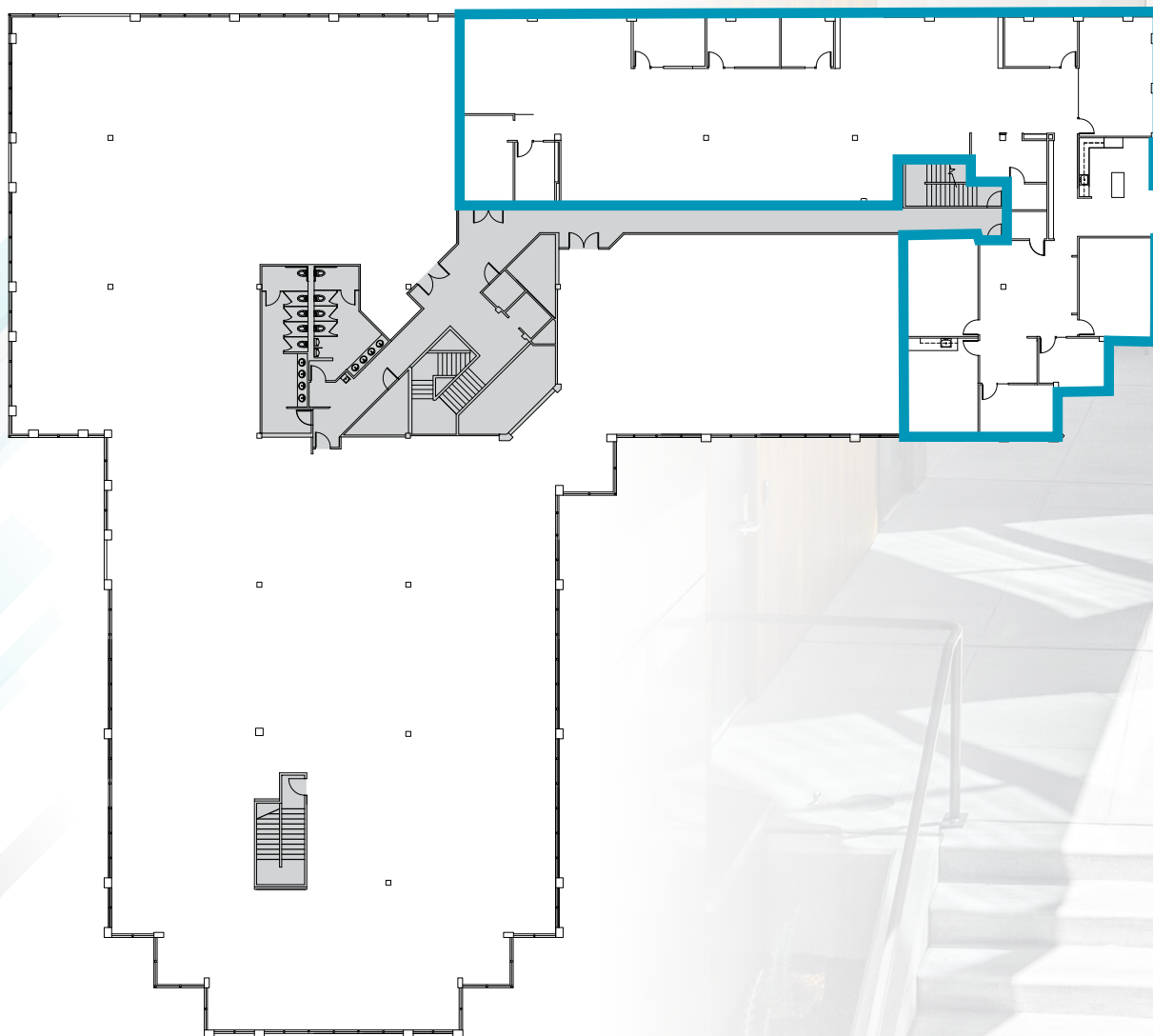
▽ = Grade Level

 [Suite 101 Virtual Tour](#)



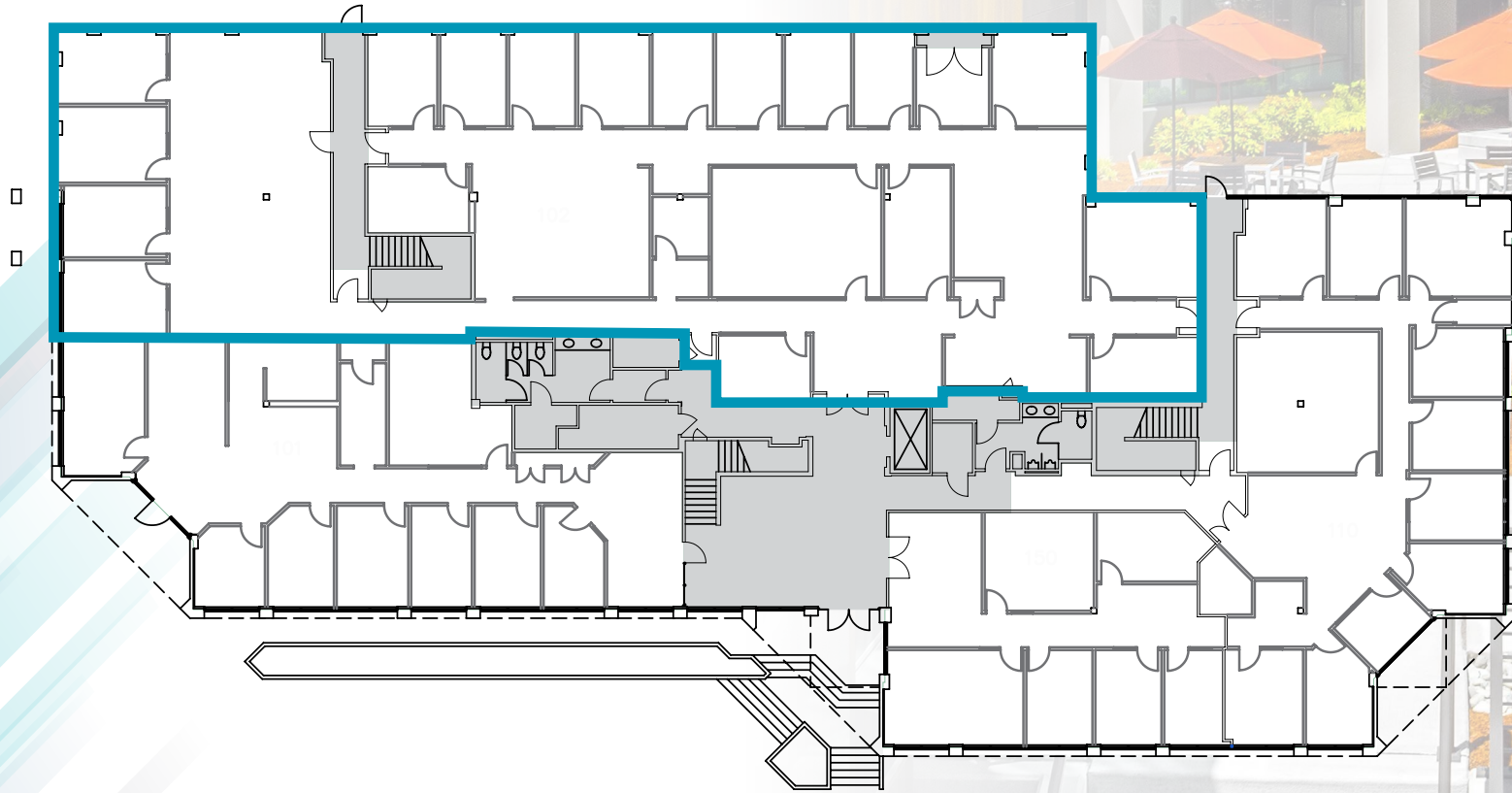
CURRENT AVAILABILITIES

Building 1
Suite 200 | 8,543 RSF
Available Now



CURRENT AVAILABILITIES

Building 2
Suite 102 | 8,299 RSF
Available Now

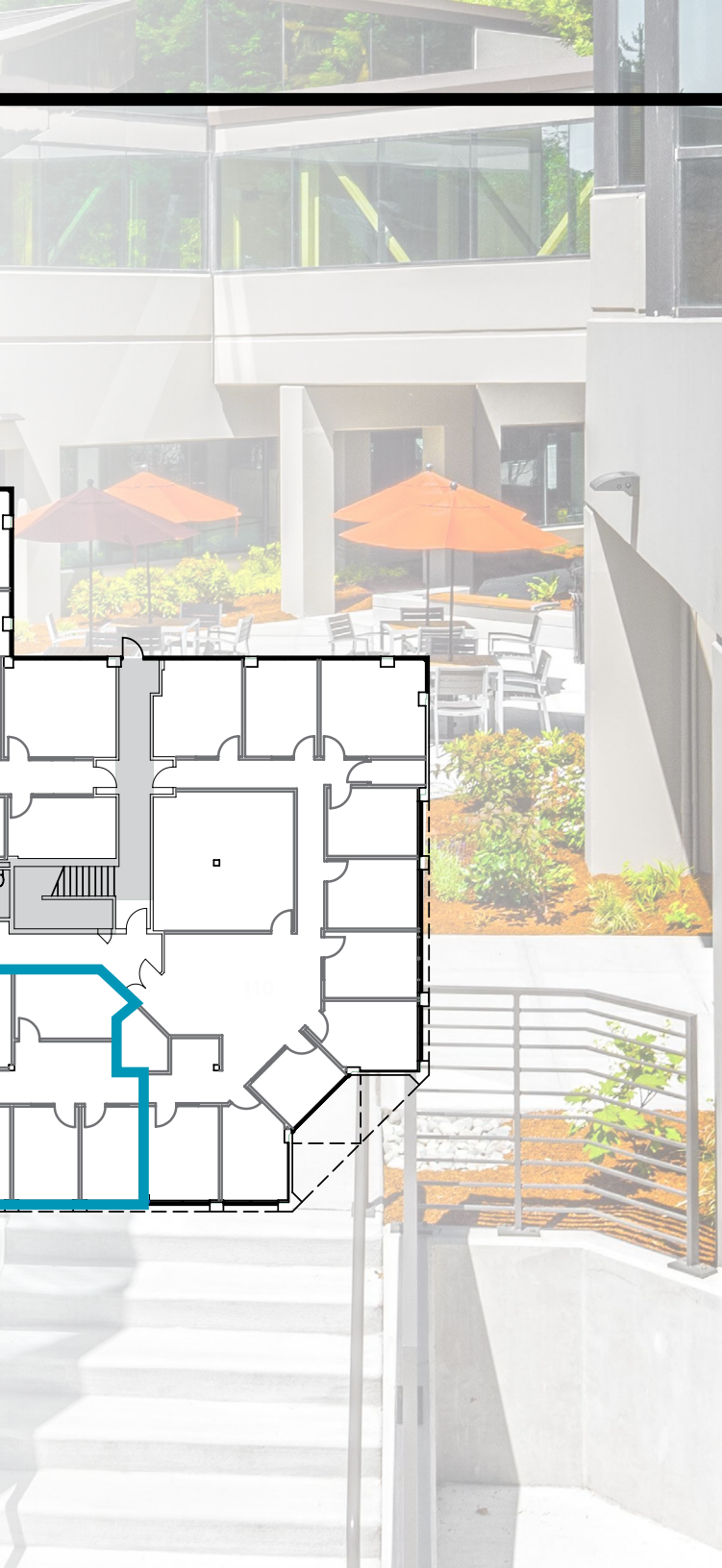
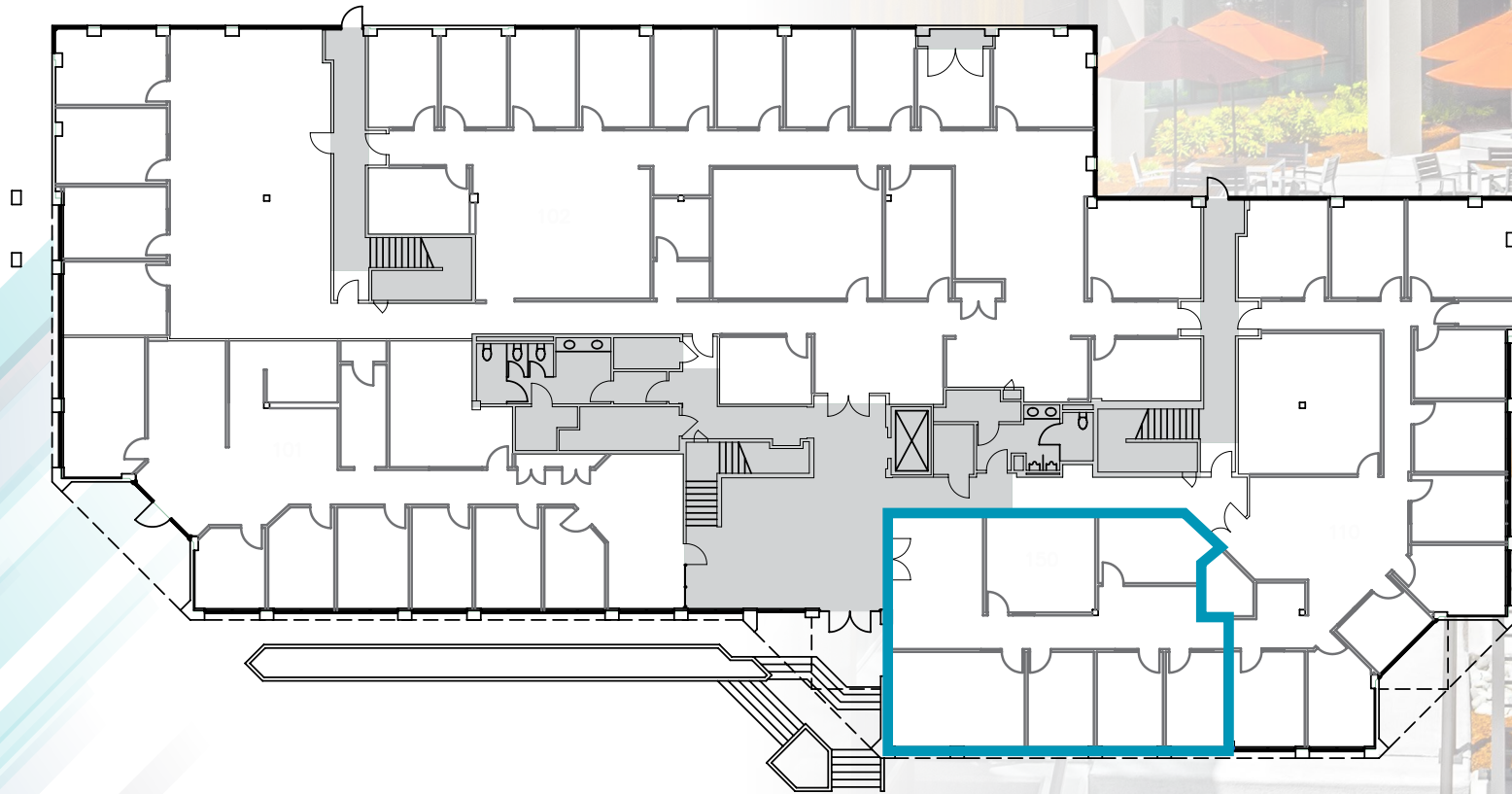


CURRENT AVAILABILITIES

Building 2

Suite 150 | 1,822 SF

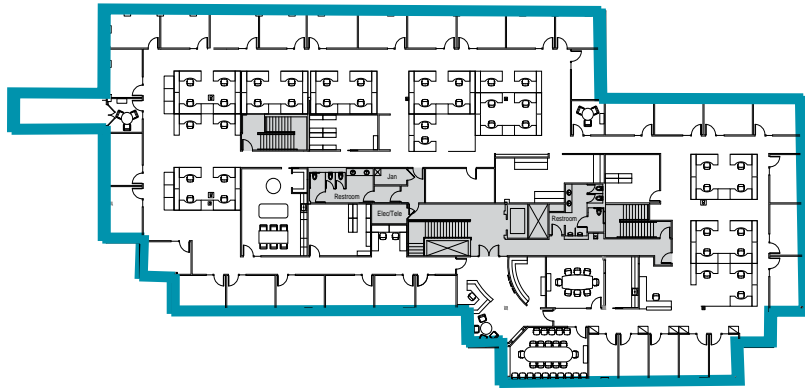
Available November 2026



CURRENT AVAILABILITIES

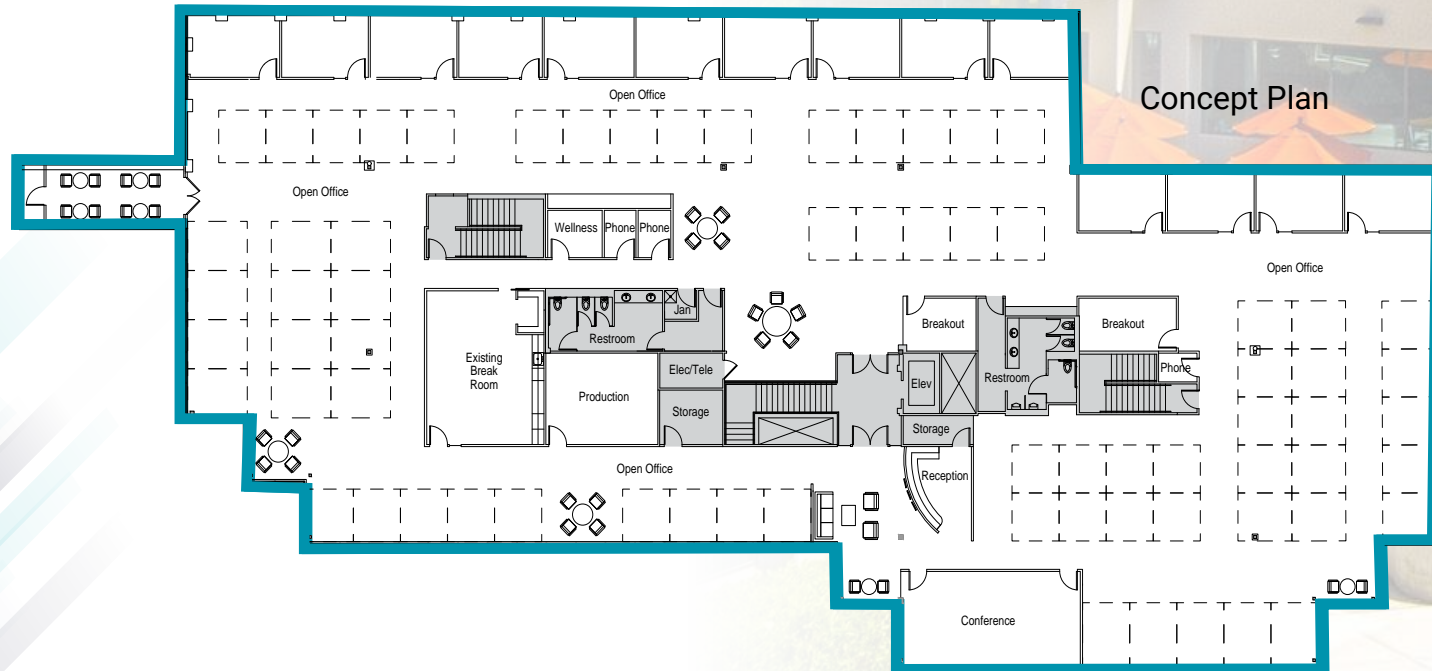
Building 2
Suite 200 | 18,998 RSF
Available Now

As-Built



 [Suite 200 Virtual Tour](#)

Concept Plan



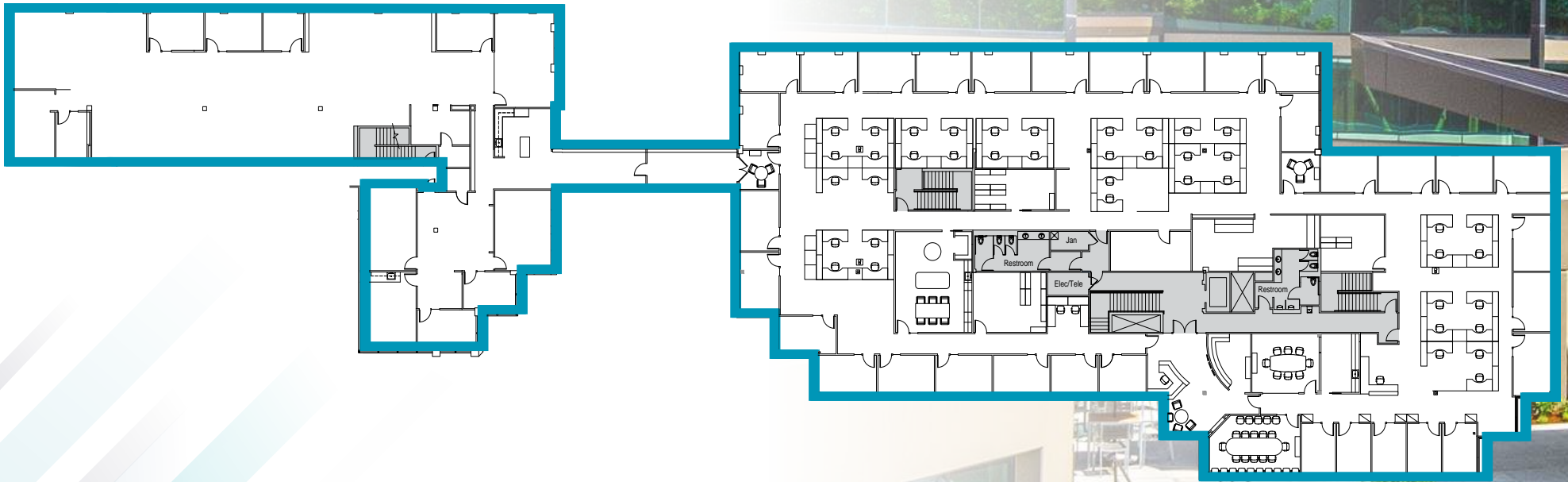
CURRENT

AVAILABILITIES

Buildings 1 and 2

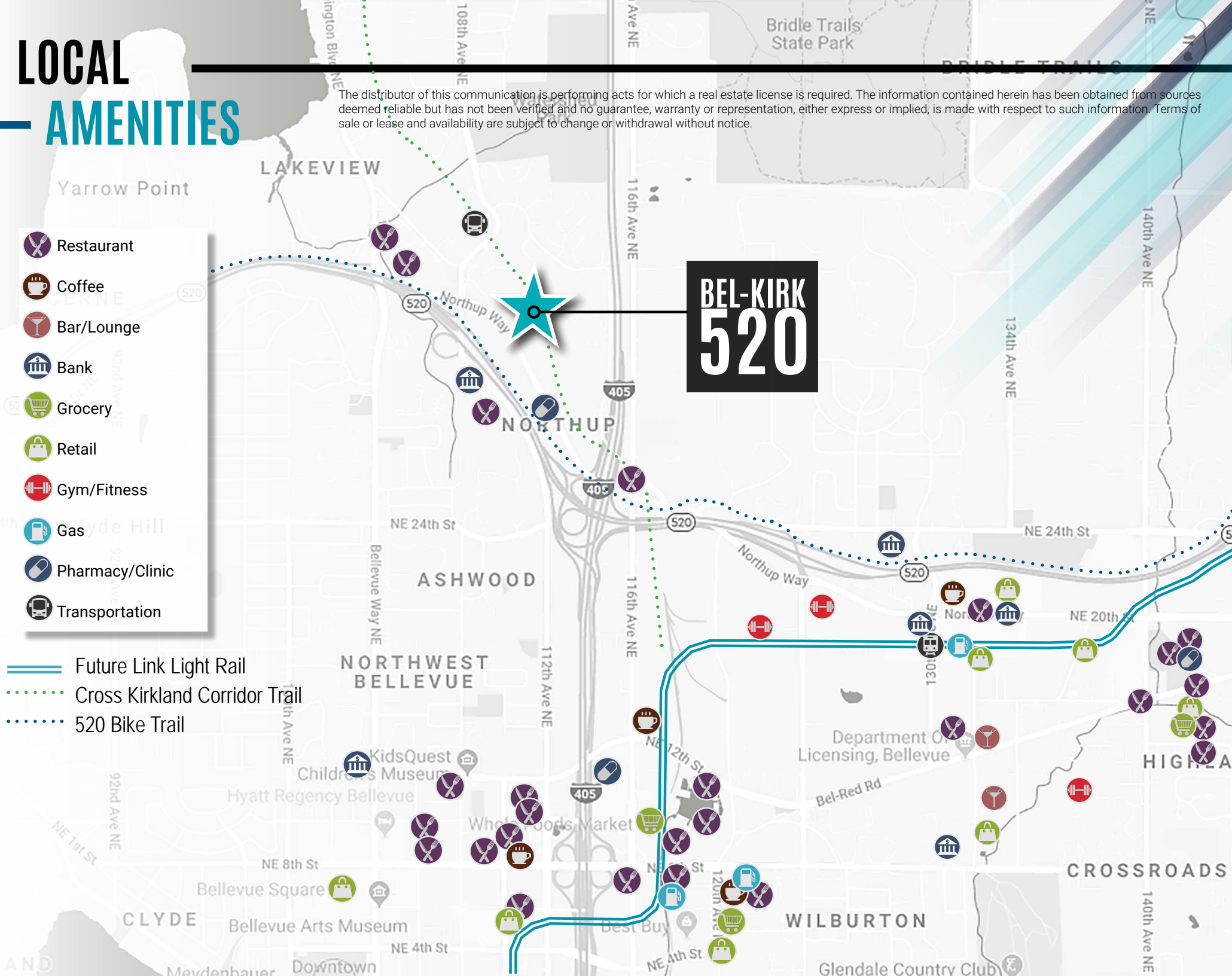
Combined Suite 200 | 27,541 RSF

Second Floors Connect via Skybridge



LOCAL AMENITIES

The distributor of this communication is performing acts for which a real estate license is required. The information contained herein has been obtained from sources deemed reliable but has not been verified and no guarantee, warranty or representation, either express or implied, is made with respect to such information. Terms of sale or lease and availability are subject to change or withdrawal without notice.



**BEL-KIRK
520**

- Restaurant
- Coffee
- Bar/Lounge
- Bank
- Grocery
- Retail
- Gym/Fitness
- Gas
- Pharmacy/Clinic
- Transportation

- Future Link Light Rail
- Cross Kirkland Corridor Trail
- 520 Bike Trail

BEL-KIRK 520

11120-11130 NE 33rd Place

JOE LYNCH

Executive Managing Director
425.362.1399
joe.lynch@nmrk.com

DAN HARDEN

Senior Managing Director
425.362.1393
dan.harden@nmrk.com

NEWMARK

The distributor of this communication is performing acts for which a real estate license is required. The information contained herein has been obtained from sources deemed reliable but has not been verified and no guarantee, warranty or representation, either express or implied, is made with respect to such information. Terms of sale or lease and availability are subject to change or withdrawal without notice. MP-138