

FOR LEASE

± 4.5 Acres

± 19,990 SF of Buildings

INDUSTRIAL OUTSIDE STORAGE YARD

7915 S 261st St, Kent, WA



NEWMARK REALTERM

TAYLOR HOFF, SIOR
Vice Chairman
425.362.1388
taylor.hoff@nmrk.com

THAD MALLORY, SIOR
Executive Vice Chairman
425.362.1410
thad.mallory@nmrk.com

FOR LEASE

± 4.5 Acres

± 19,990 SF of Buildings

INDUSTRIAL OUTSIDE STORAGE YARD

7915 S 261st St, Kent, WA



BUILDING HIGHLIGHTS

Land Size	± 4.5 Acres
Building	± 19,990 SF (3 buildings)
Office SF	± 4,800/SF (Two-Story)
Maintenance Shop	± 5,700 SF
Wash Bay/Service Shop	± 9,700SF
Clear Height	18'
Zoning	I2

PROPERTY HIGHLIGHTS

- Paved and Graveled Site
- Fully Fenced and Flat Site
- Wash Bay with Oil/Water Separator
- Small Office and Shop
- Available 9/1/2026

NEWMARK REALTERM

TAYLOR HOFF, SIOR
Vice Chairman
425.362.1388
taylor.hoff@nrmk.com

THAD MALLORY, SIOR
Executive Vice Chairman
425.362.1410
thad.mallory@nrmk.com

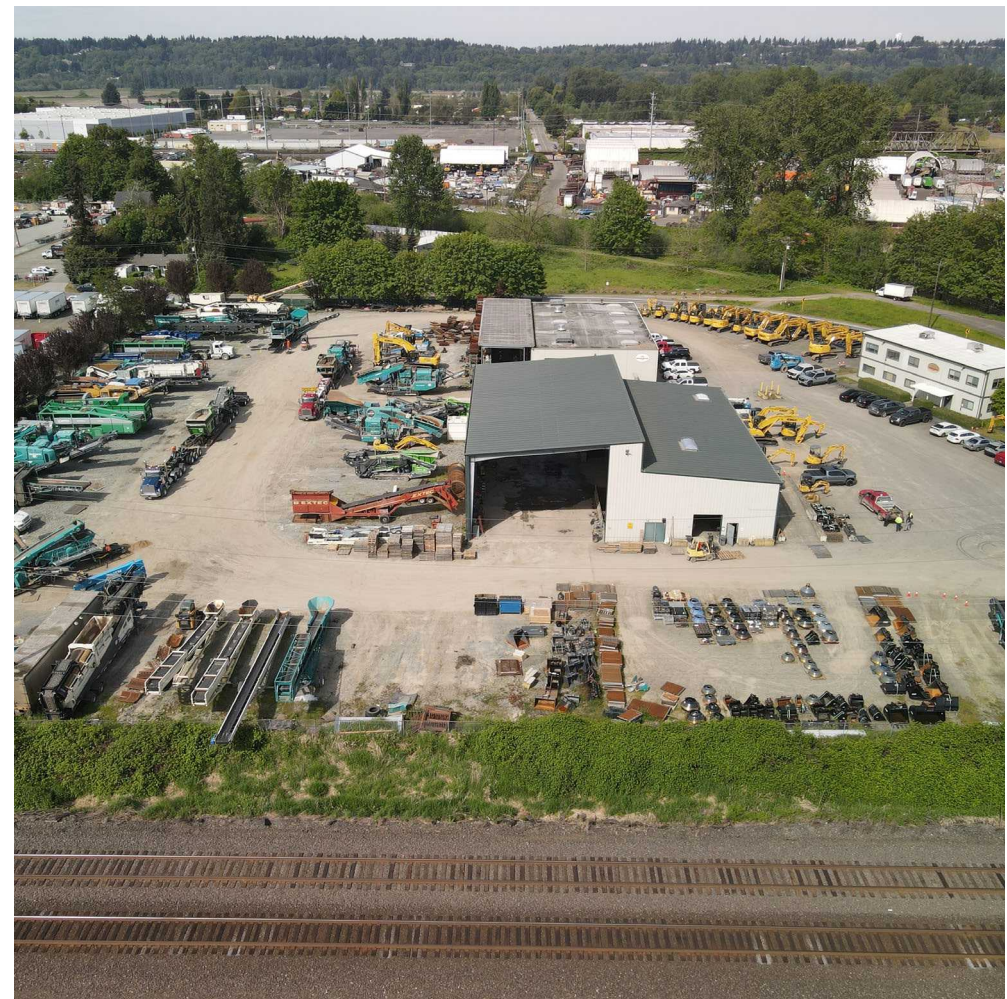
FOR LEASE

± 4.5 Acres

± 19,990 SF of Buildings

INDUSTRIAL OUTSIDE STORAGE YARD

7915 S 261st St, Kent, WA



NEWMARK REALTERM

TAYLOR HOFF, SIOR
Vice Chairman
425.362.1388
taylor.hoff@nrmk.com

THAD MALLORY, SIOR
Executive Vice Chairman
425.362.1410
thad.mallory@nrmk.com

FOR LEASE

± 4.5 Acres

± 19,990 SF of Buildings

INDUSTRIAL OUTSIDE STORAGE YARD

7915 S 261st St, Kent, WA



DRIVE TIMES

SEA INT'L AIRPORT:	20 MIN - 12 MILES
PORT OF TACOMA:	32 MIN - 17 MILES
PORT OF SEATTLE:	40 MIN - 22 MILES

NEWMARK

The information contained herein has been obtained from sources deemed reliable but has not been verified and no guarantee, warranty or representation, either express or implied, is made with respect to such information. Terms of sale or lease and availability are subject to change or withdrawal without notice.