

The Market Point Building

720-734 Market Street, Kirkland, WA 98033



Available Immediately

910 RSF | \$29.67/RSF, Gross



DAN KREKEL, CCIM
Senior Vice President
(425) 586-4655
dkrekel@leibsohn.com




MAXTON MACLACHLAN
Associate Vice President
(425) 586-4659
mmaclachlan@leibsohn.com

The Market Point Building

720-734 Market Street, Kirkland, WA 98033

Property Features



- » Easy Access to I-405
- » Walkable to Downtown Kirkland and Heritage Park
- » 1st Floor — ADA Accessibility
- » 15-Foot-High Ceilings
- » Located on Market Street
- »  Available



DAN KREKEL, CCIM
Senior Vice President
(425) 586-4655
dkrekel@leibsohn.com



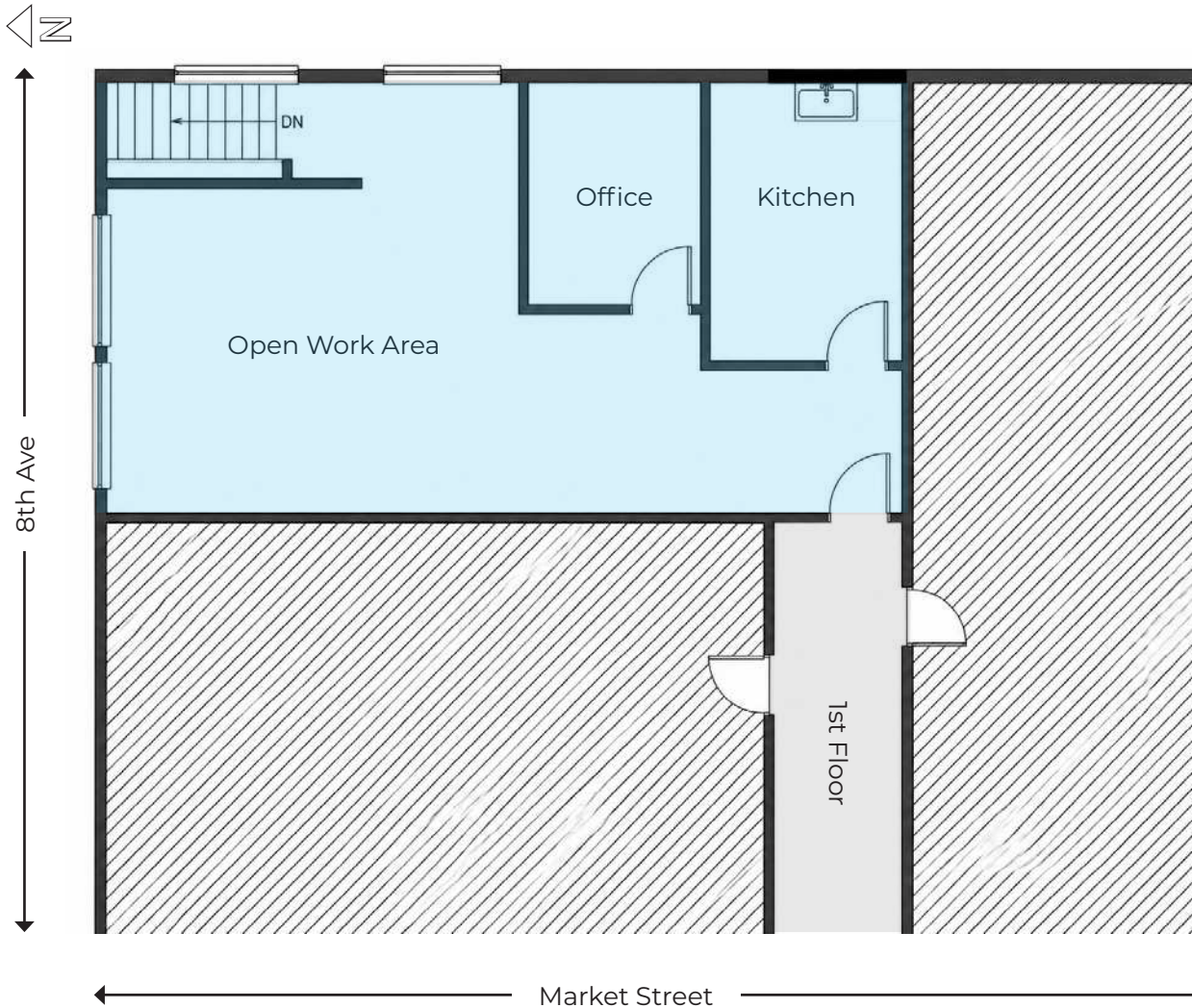
MAXTON MACLACHLAN
Associate Vice President
(425) 586-4659
mmaclachlan@leibsohn.com

The Market Point Building

720-734 Market Street, Kirkland, WA 98033

Suite B | 910 RSF

- \$29.67/RSF, Gross
- \$2,250.00 per month, Gross
- Available Immediately



DAN KREKEL, CCIM
Senior Vice President
(425) 586-4655
dkrekel@leibsohn.com



MAXTON MACLACHLAN
Associate Vice President
(425) 586-4659
mmaclachlan@leibsohn.com

Nearby Amenities

- 1. Jimmy John's
- 2. Dumpling The Noodle
- 3. Nothing Bundt Cakes
- 4. Shake Shack
- 5. DERU Eatery
- 6. Zip Dak Korean Fried Chicken
- 7. Kirkland Bakery
- 8. Subway
- 9. Los Chilangos Mexican Restaurant
- 10. Acropolis Pizza & Pasta
- 11. Cafe Hagen
- 12. Sano Cafe
- 13. Flatstick Pub
- 14. Moss Bay Hall



The Market Point Building

EAST RAIL



Major Bus Line Stop



The Market Point Building

720-734 Market Street, Kirkland, WA 98033



MOSS BAY

HERITAGE PARK



DAN KREKEL, CCIM
Senior Vice President
(425) 586-4655
dkrekel@leibsohn.com



MAXTON MACLACHLAN
Associate Vice President
(425) 586-4659
mmaclachlan@leibsohn.com

The Market Point Building

720-734 Market Street, Kirkland, WA 98033

8th Ave

Market St

1st St

7th Ave W

7th Ave



 **Leibsohn
& Company**



DAN KREKEL, CCIM
Senior Vice President
(425) 586-4655
dkrekel@leibsohn.com



MAXTON MACLACHLAN
Associate Vice President
(425) 586-4659
mmaclachlan@leibsohn.com

The Market Point Building

720-734 Market Street, Kirkland, WA 98033

THE INFORMATION CONTAINED HEREIN HAS BEEN RECEIVED FROM SOURCES WE DEEM RELIABLE. WHILE WE HAVE NO REASON TO DOUBT ITS ACCURACY, WE DO NOT GUARANTEE IT. YOU ARE ADVISED TO INDEPENDENTLY VERIFY ALL INFORMATION. *Leibsohn & Company 2026*



DAN KREKEL, CCIM
Senior Vice President
(425) 586-4655
dkrekel@leibsohn.com



MAXTON MACLACHLAN
Associate Vice President
(425) 586-4659
mmaclachlan@leibsohn.com