

PACIFIC BUSINESS PARK BUILDING 2



*Industrial Space
For Lease*

4,023
SF SHELL

1,093
SF OFFICE

NOW
AVAILABLE

4,023 SF available, 1,093 SF office

\$0.90/SF shell, \$1.35/SF office add-on + NNN

One grade-level door

Great parking

Tremendous access to I-5 & SR-167 St via S 212th St

Comcast cable available

Onsite roaming security guard with patrol car, from
9 PM-5 AM seven days a week

DOUG KLEIN, SIOR
206.248.7348
doug.klein@kidder.com

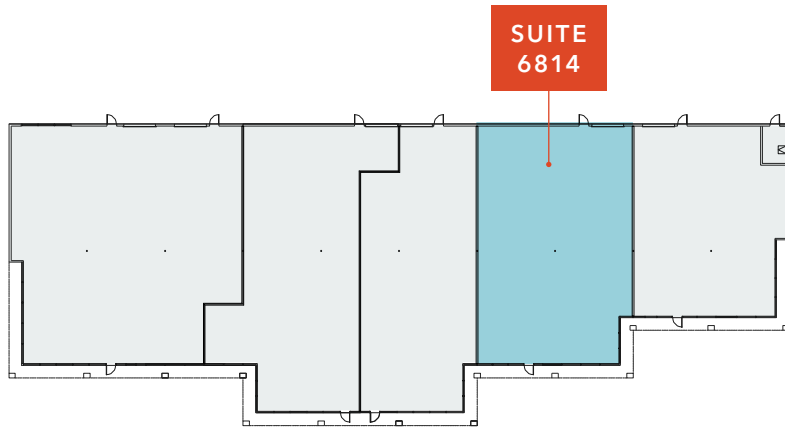
KRAIG HEETER, SIOR
206.248.7313
kraig.heeter@kidder.com

COLT SHERRELL
206.498.4566
colt.sherrell@kidder.com

KIDDER.COM

This information supplied herein is from sources we deem reliable. It is provided without any representation, warranty, or guarantee, expressed or implied as to its accuracy. Prospective Buyer or Tenant should conduct an independent investigation and verification of all matters deemed to be material, including, but not limited to, statements of income and expenses. Consult your attorney, accountant, or other professional advisor.

FOR LEASE



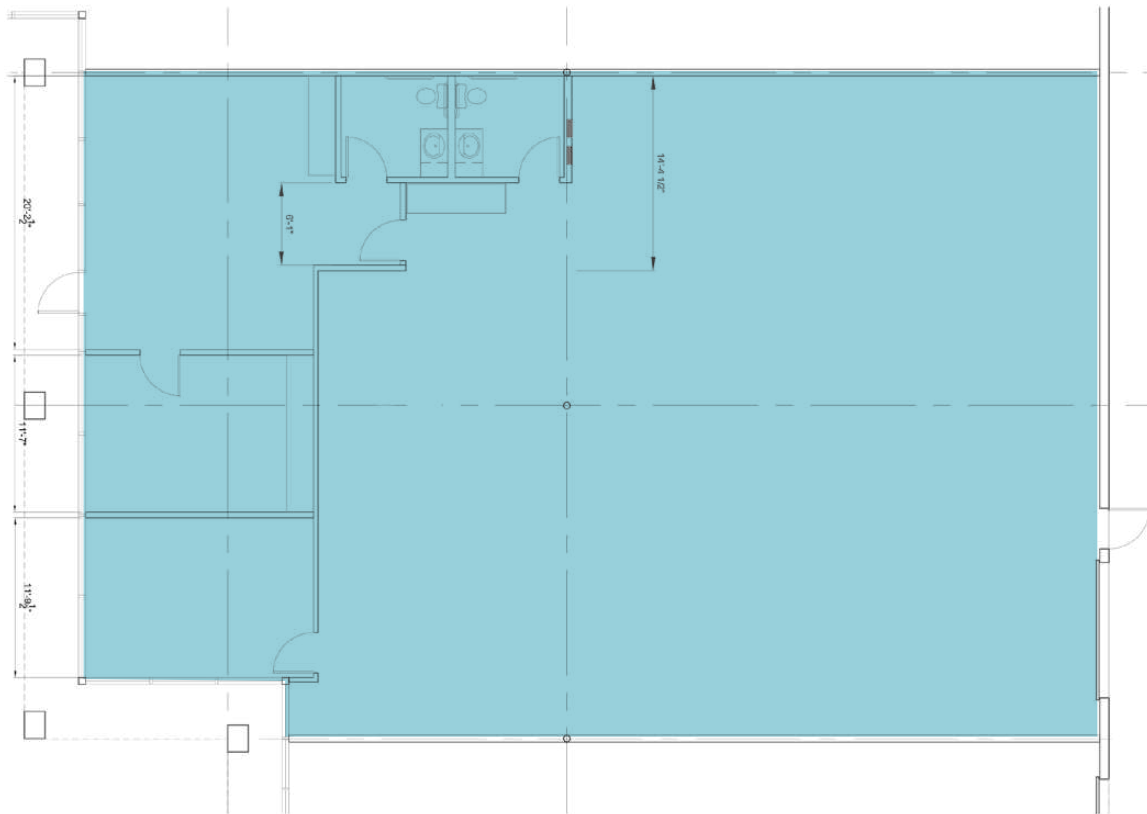
\$0.90

PSF SHELL

\$1.35

PSF OFFICE ADD-ON

BUILDING 2



SUITE 6814 FLOORPLAN



KIDDER.COM

This information supplied herein is from sources we deem reliable. It is provided without any representation, warranty, or guarantee, expressed or implied as to its accuracy. Prospective Buyer or Tenant should conduct an independent investigation and verification of all matters deemed to be material, including, but not limited to, statements of income and expenses. Consult your attorney, accountant, or other professional advisor.



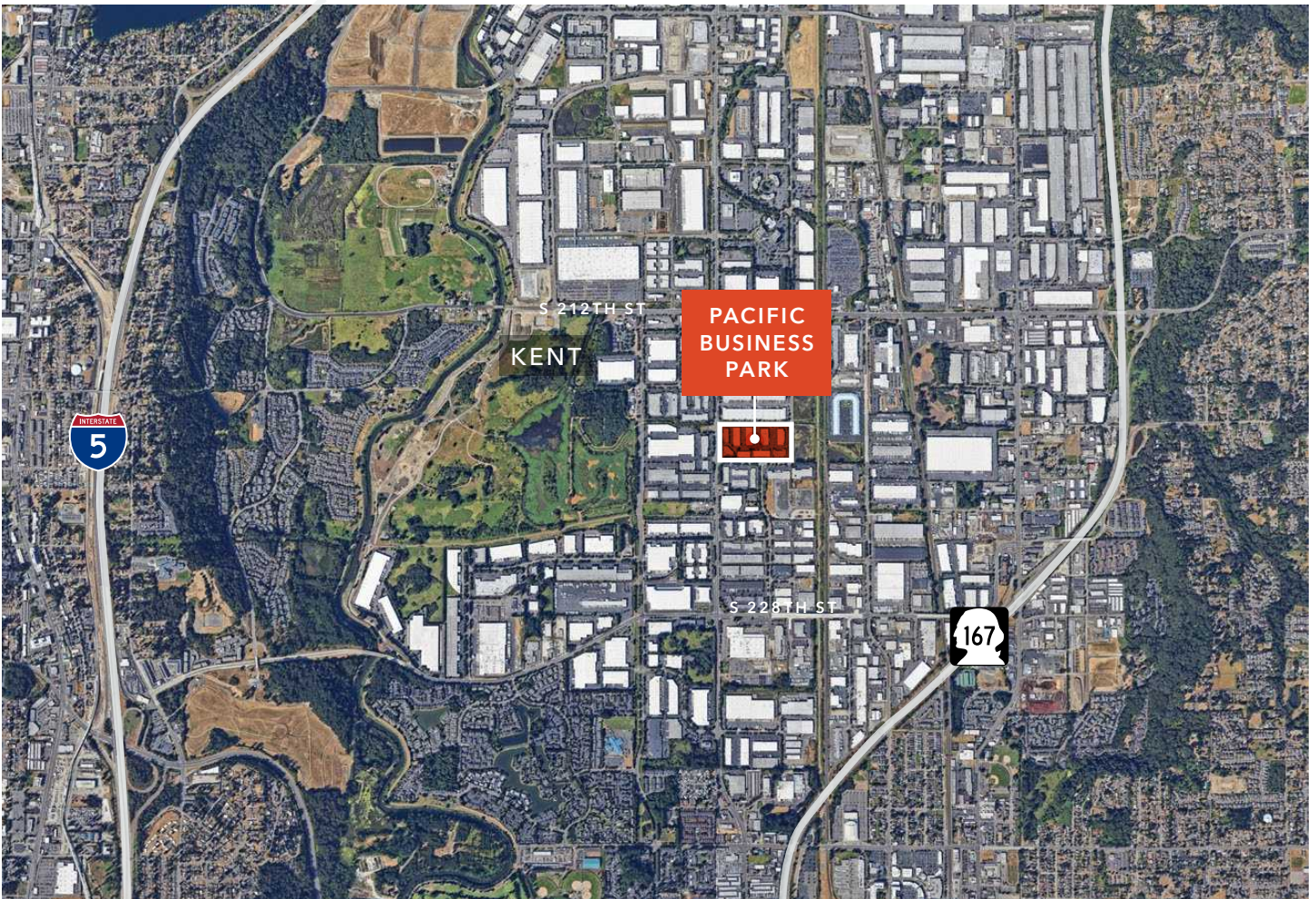
FOR LEASE



L1
ZONING

5 MIN
TO SR-167

14 MIN
TO SEATAC AIRPORT



KIDDER.COM

This information supplied herein is from sources we deem reliable. It is provided without any representation, warranty, or guarantee, expressed or implied as to its accuracy. Prospective Buyer or Tenant should conduct an independent investigation and verification of all matters deemed to be material, including, but not limited to, statements of income and expenses. Consult your attorney, accountant, or other professional advisor.

