

FOR LEASE

# WOODINVILLE WEST BUSINESS PARK

*Office and Flex Spaces Available  
for Lease in Woodinville, WA*

16928 WOODINVILLE-REDMOND RD NE



# WOODINVILLE WEST BUSINESS PARK



## SUITE AVAILABILITIES

Building A	Total Area	Office	WH
SUITE 103A	1,557 SF	778 SF	779 SF
SUITE 109B	2,500 SF	1,600 SF	900 SF

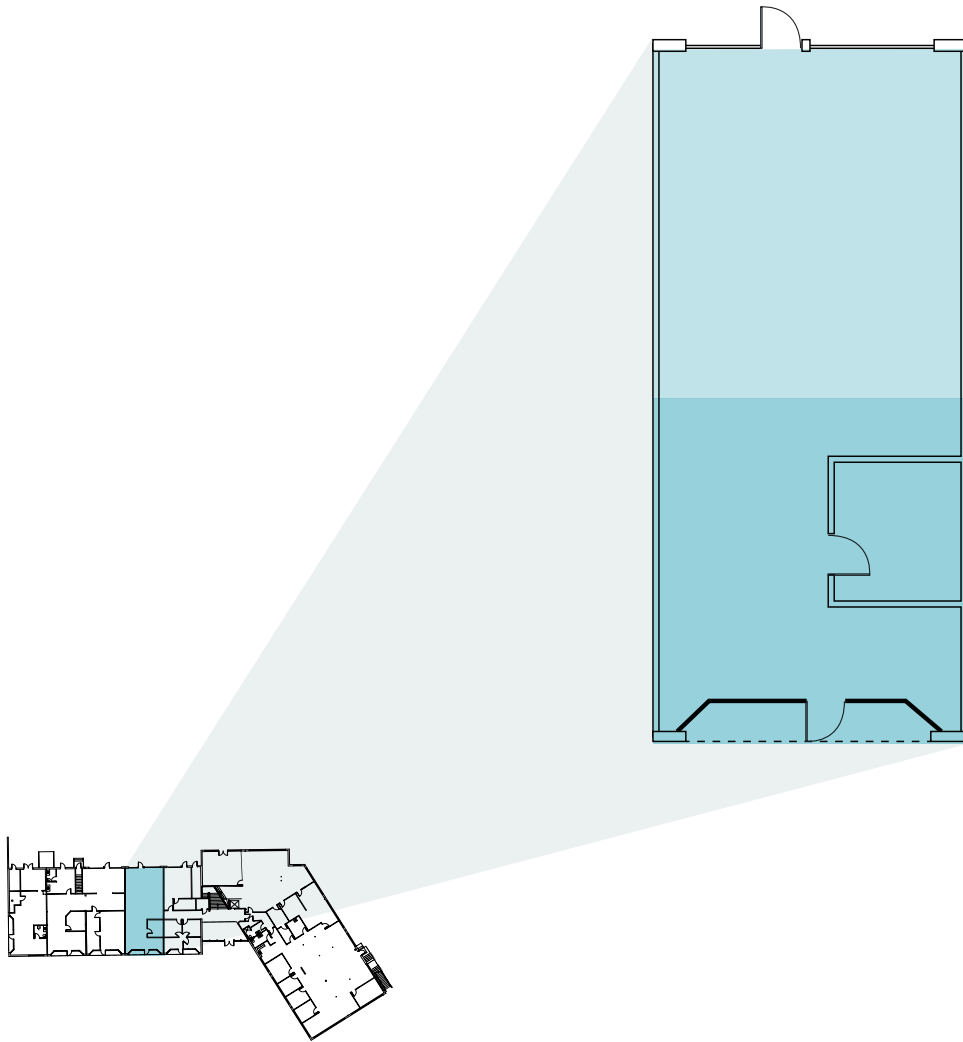
  

Building B	Total Area	Office
SUITE 201B	1,011 SF	1,011 SF
SUITE 206B	1,295 SF	1,295 SF
SUITE 207B	1,281 SF	1,281 SF
SUITE 208B	1,007 SF	1,007 SF
SUITE 206B & SUITE 208B	2,302 SF	2,302 SF

## PROPERTY DETAILS

- Located minutes from downtown Woodinville
- Views of Sammamish River and lots of natural light
- Great access to I-405 and SR-522
- Grade-level loading
- 12' clear height
- Air-conditioned office
- NNNs include utilities and janitorial service

# SUITE 103A | BUILDING A



*1,577 SF*

TOTAL AREA

*778 SF*

TOTAL OFFICE AREA

*779 SF*

TOTAL WAREHOUSE AREA

*\$2.00/SF*

LEASE RATE, NNN

*NOW*

AVAILABLE

## LEGEND

- Office
- Warehouse

# SUITE 109B | BUILDING A

*2,500 SF*

TOTAL AREA

*1,600 SF*

TOTAL OFFICE AREA

*900 SF*

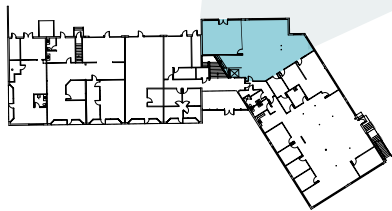
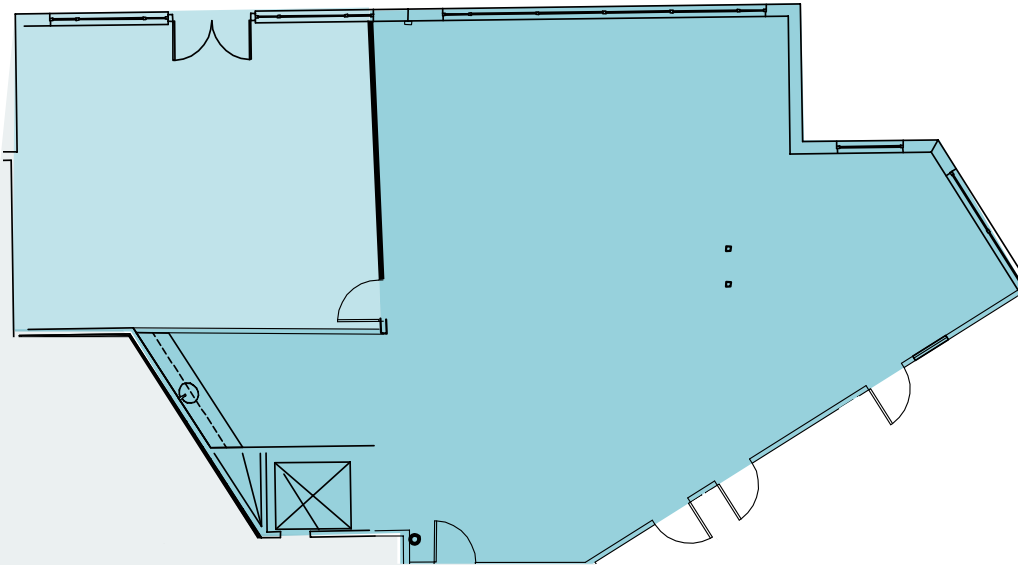
TOTAL WAREHOUSE AREA

*\$2.00/SF*

LEASE RATE, NNN

*NOW*

AVAILABLE



## LEGEND

- Office
- Warehouse

# SUITE 201B | BUILDING B

*1,011 SF*

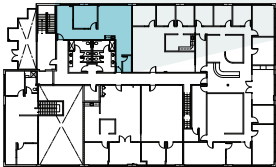
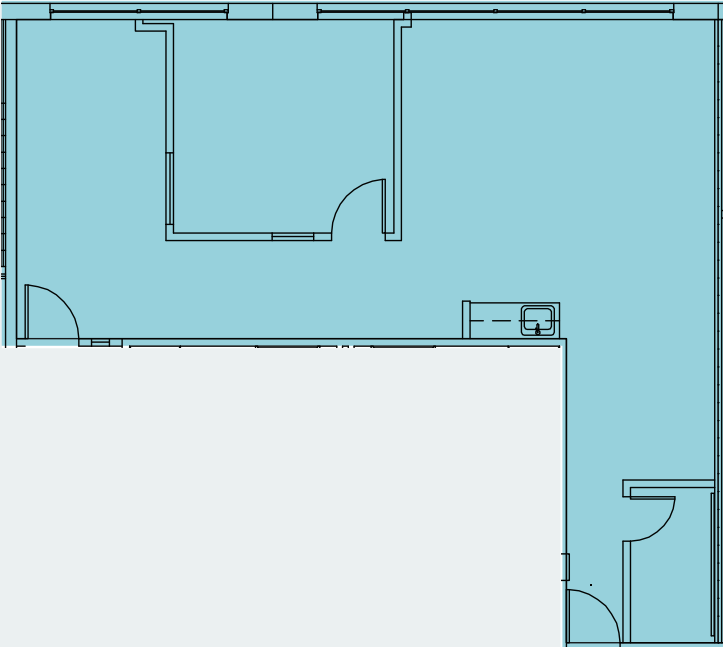
TOTAL OFFICE AREA

*\$2.00/SF*

LEASE RATE, NNN

*NOW*

AVAILABLE



**LEGEND**

■ Office

# SUITE 206B | BUILDING B

*1,295 SF*

TOTAL OFFICE AREA

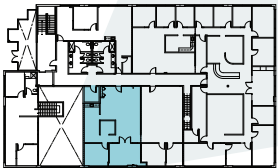
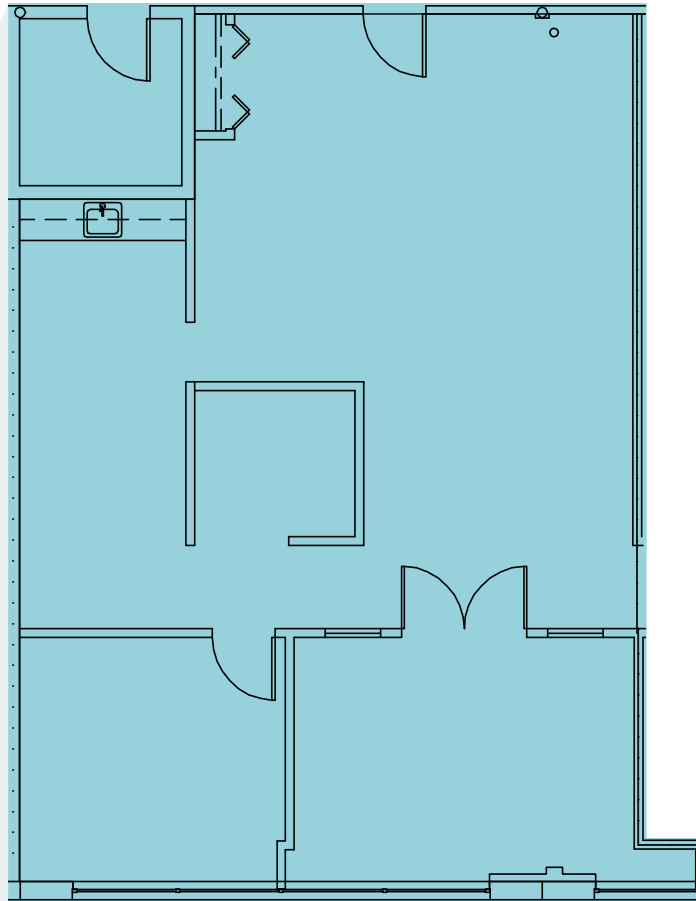
*\$2.00/SF*

LEASE RATE, NNN

*AVAILABLE*

30-DAYS NOTICE

Suite 206B & 208B can be combined



## LEGEND

■ Office

# SUITE 207B | BUILDING B

*1,281 SF*

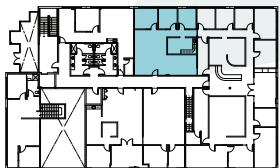
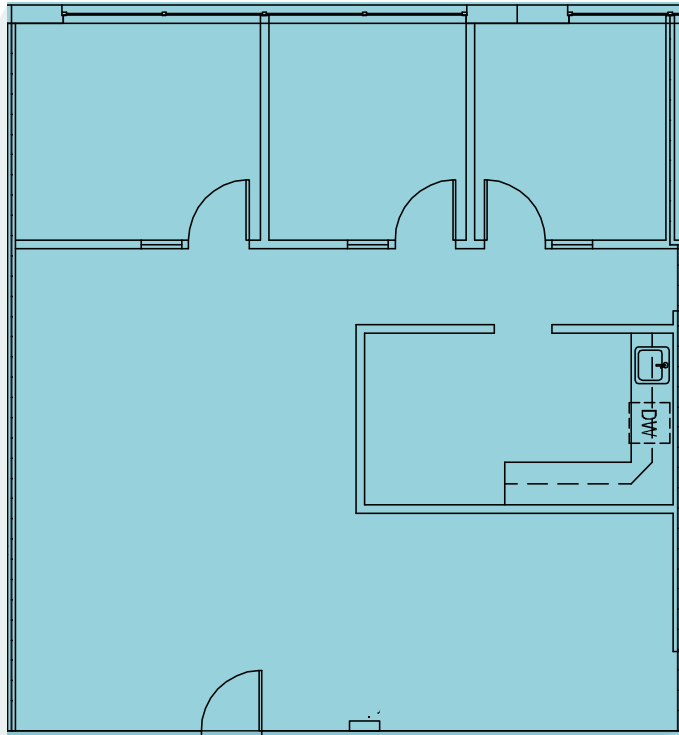
TOTAL OFFICE AREA

*\$2.00/SF*

LEASE RATE, NNN

*AVAILABLE*

30-DAYS NOTICE



**LEGEND**

■ Office

# SUITE 208B | BUILDING B

*1,007 SF*

TOTAL OFFICE AREA

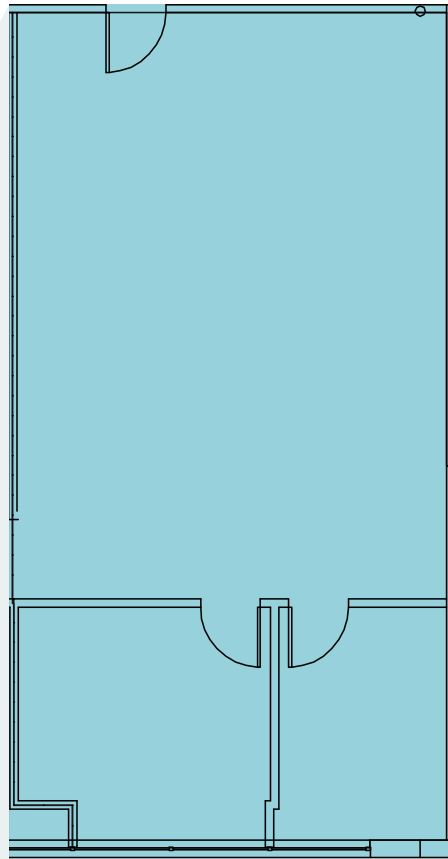
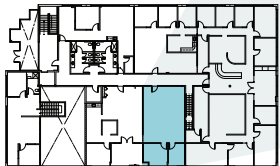
*\$2.00/SF*

LEASE RATE, NNN

*AVAILABLE*

30-DAYS NOTICE

Suite 206B & 208B can be combined



## LEGEND

■ Office

# SUITES 206B & 208B COMBINED | BUILDING B

*2,302 SF*

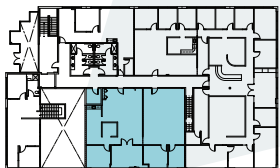
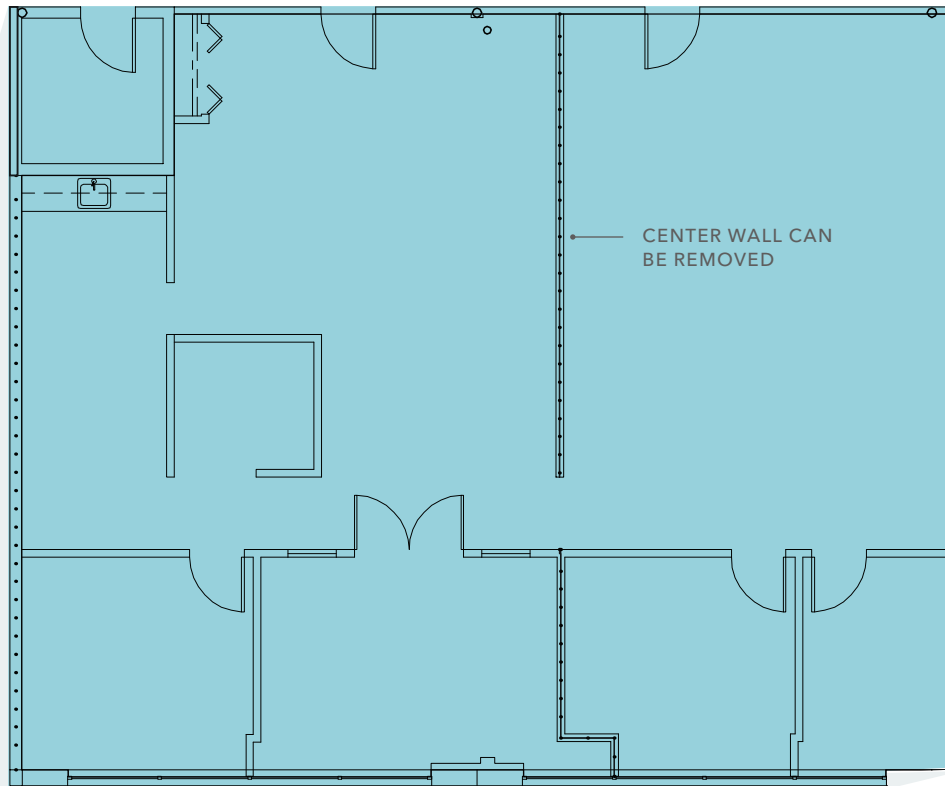
TOTAL OFFICE AREA

*\$2.00/SF*

LEASE RATE, NNN

*AVAILABLE*

30-DAYS NOTICE



**LEGEND**

■ Office

WOODINVILLE WEST BUSINESS PARK

5 MIN

DRIVE TO DOWNTOWN  
WOODINVILLE

12 MIN

DRIVE TO BOTHELL



5 MIN DRIVE  
To SR-522

SUBJECT  
PROPERTY

WOODINVILLE



# WOODINVILLE WEST BUSINESS PARK

*Exclusively leased by*

**CARTER NICHOLSON**  
Associate  
425.450.1145  
carter.nicholson@kidder.com

**JASON BLOOM**  
Executive Vice President  
425.450.1102  
jason.bloom@kidder.com

**TODD GAUTHIER**  
Executive Vice President  
425.450.1118  
todd.gauthier@kidder.com

**KIDDER.COM**

This information supplied herein is from sources we deem reliable. It is provided without any representation, warranty, or guarantee, expressed or implied as to its accuracy. Prospective Buyer or Tenant should conduct an independent investigation and verification of all matters deemed to be material, including, but not limited to, statements of income and expenses. Consult your attorney, accountant, or other professional advisor.

