



**FOR LEASE
OFFICE & RETAIL**

26217 Maple Valley Black Diamond Rd
Maple Valley, WA 98038



THE ENCLAVE | MAPLE VALLEY

First Western Properties—Tacoma Inc. | 253.472.0404
6402 Tacoma Mall Blvd, Tacoma, WA 98409 | fwp-inc.com

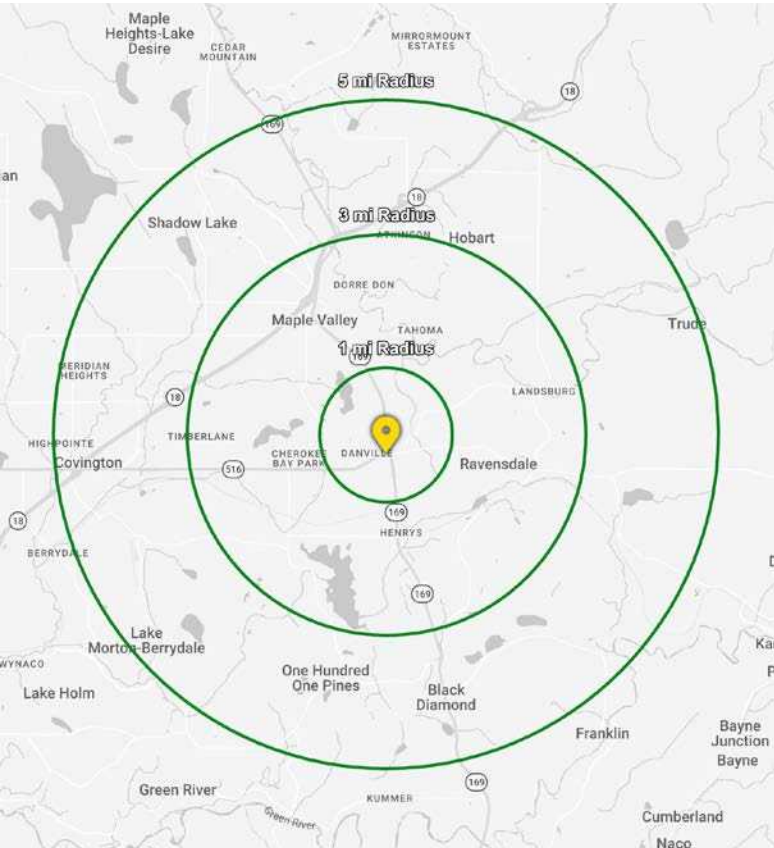
THE ENCLAVE is located on the high-traffic SR-169. this property offers outstanding visibility and easy access in one of Maple Valley’s fastest-growing commercial corridors. Close to major retailers like Safeway and Fred Meyer. With ample parking, and a scenic suburban setting, this is a great opportunity to capitalize on the area’s continued growth.

AVAILABLE

908 SF \$45.00 PSF PLUS NNN

2,810 SF (OFFICE) \$45.00 PSF PLUS NNN

- Spaces can be combined.
- Estimated NNN \$13.00 PSF (2026)
- Join MultiCare Urgent Care, Crocketts Public House, Total Body Wellness, AR Workshop, Suburban Soul, Jersey Mike’s, & more.
- High end demographics
- Excellent visibility - over 30,000 cars per day on Maple Valley Black Diamond Rd
- Near many national retailers such as Fred Meyer, Safeway, Grocery Outlet, Walgreens and more!



Regis - 2026	Population	Average HH Income	Daytime Population
Mile 1	9,077	\$224,199	3,472
Mile 3	42,607	\$192,359	18,147
Mile 5	75,414	\$191,714	34,320

SITE PLAN

SUITE	SF	TENANT
BLDG 1		
101	908	AVAILABLE
102	2,810	AVAILABLE
103	1,971	Kirby Nelson Orthodontics
104	1,245	Total Body Wellness
105	1,400	Guild Mortgage
BLDG 2		
101	1,500	Jersey Mike's
102	1,135	AR Workshop
103	1,200	Suburban Soul
104	4,825	Crocketts Public House
BLDG 3		
	2,830	MultiCare Indigo Urgent Care

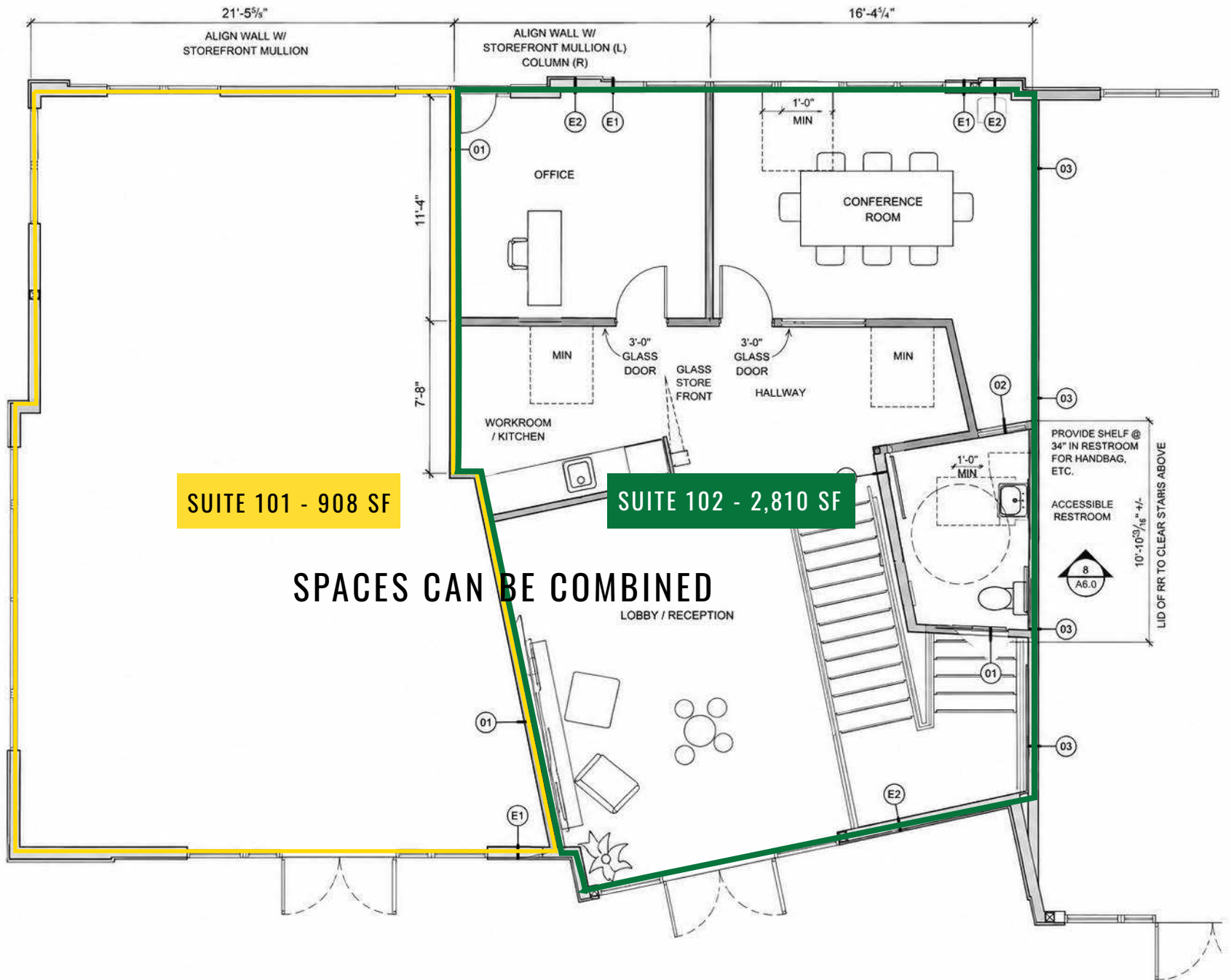


PHOTOS - SUITE 102



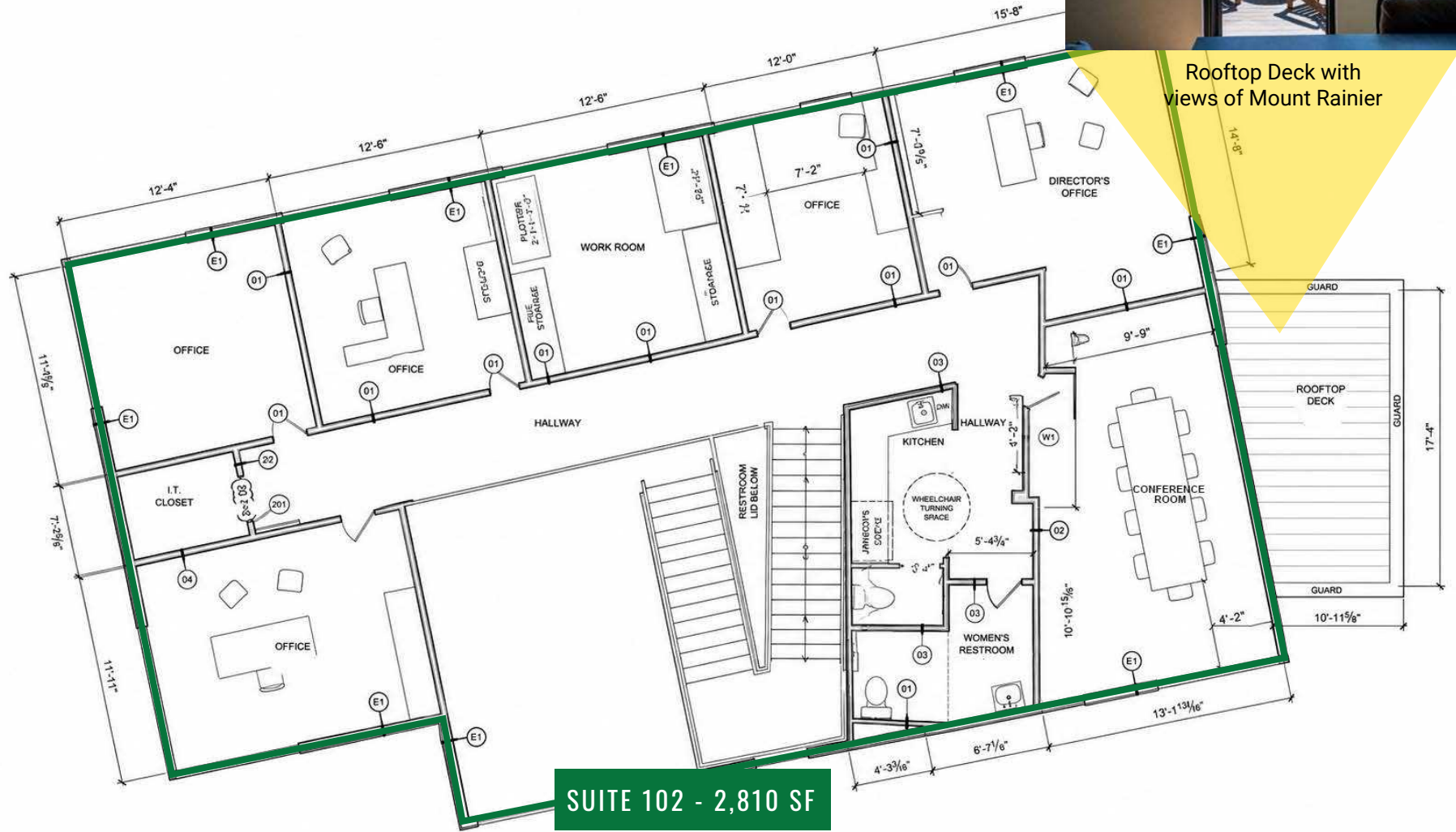
1ST FLOOR

FLOOR PLAN



2ND FLOOR

FLOOR PLAN



SUITE 102 - 2,810 SF



Rooftop Deck with views of Mount Rainier

LOCATION DETAILS



30,000 CPD
Maple Valley
Black Diamond Rd



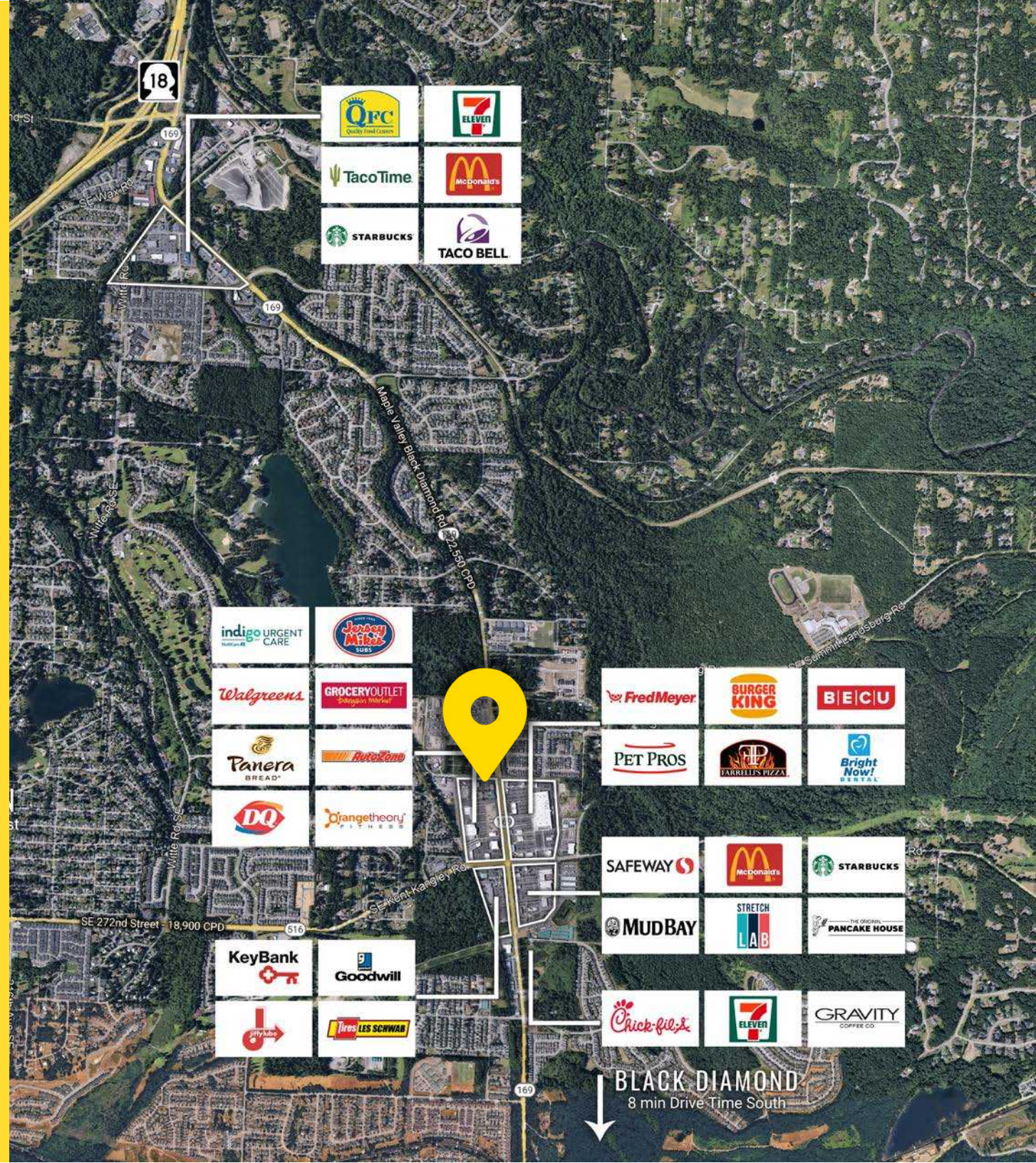
5,500 CPD
SE 264th St



Located in the Maple
Valley Retail Core



Located moments
from HWY 18




BLACK DIAMOND
8 min Drive Time South

TACOMA | KIRKLAND | PORTLAND | SEATTLE


RELATIONSHIP FOCUSED.
RESULTS DRIVEN.


JUSTICE KNOX

 253.471.5501


 jknox@firstwesternproperties.com

JOSH PARNELL

 253.284.3630

 josh@firstwesternproperties.com

JUSTIN HOLMES

 253.447.2282

 justin@firstwesternproperties.com

First Western Properties—Tacoma Inc. | 253.472.0404
6402 Tacoma Mall Blvd, Tacoma, WA 98409 | fwp-inc.com

© First Western Properties, Inc. DISCLAIMER: The above information has been secured from sources believed to be reliable, however, no representations are made to its accuracy. Prospective tenants or buyers should consult their professional advisors and conduct their own independent investigation. Properties are subject to change in price and/or availability without notice.

