

FOR LEASE

# WOODVIEW PLAZA

*594 SF - 1,546 SF Office Spaces  
Available in Woodinville*

18915 142ND AVE NE | WOODINVILLE, WA



# WOODVIEW PLAZA



*Close proximity to downtown Woodinville and easy access to SR-522, Woodview Plaza is known for its outstanding local ownership.*

## PROPERTY OVERVIEW

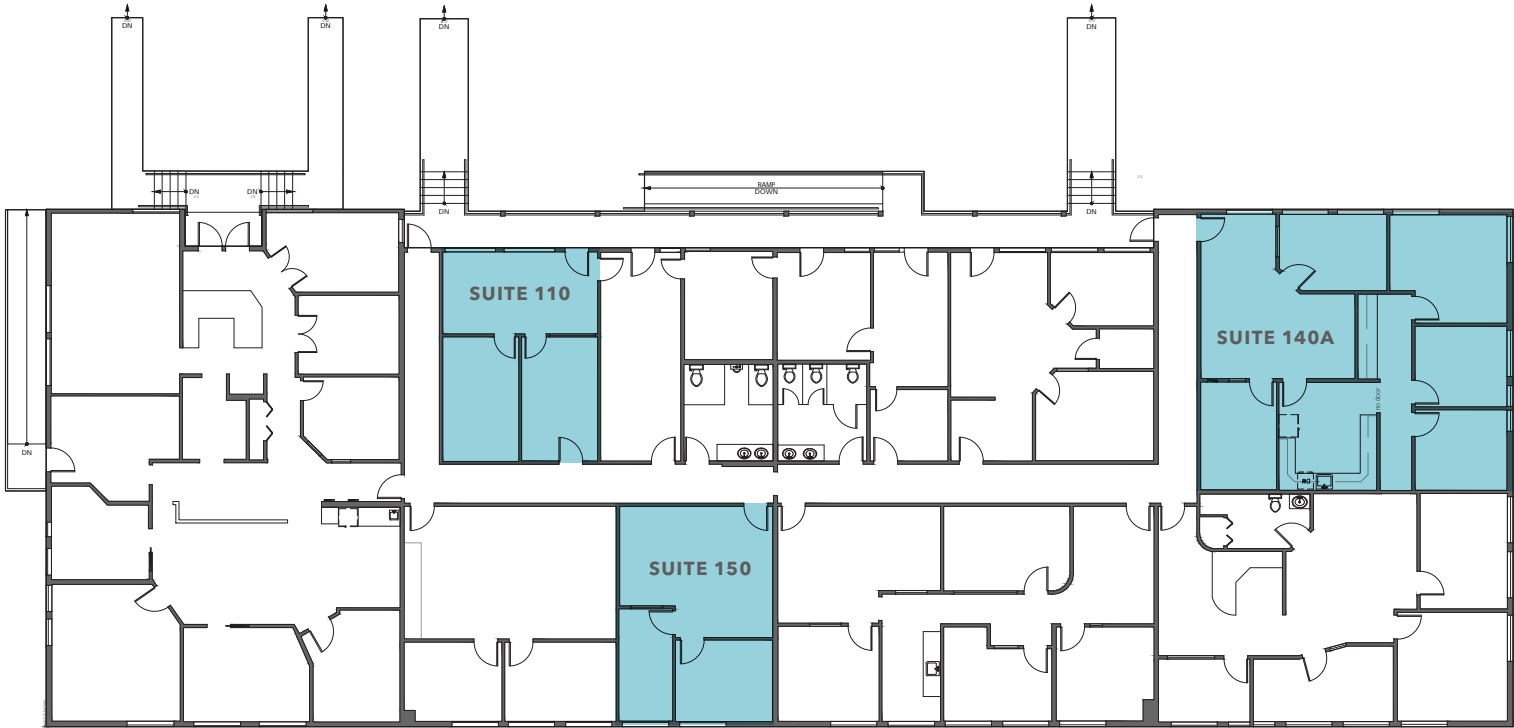
ADDRESS	18915 142nd Ave NE Woodinville, WA 98072
LEASE RATE	\$1.85/SF, NNN
NNN'S	\$0.74/SF
YEAR BUILT	1990
CONSTRUCTION	Reinforced Concrete
PARKING RATIO	2.70/1,000 SF

**4 MIN**

SR-522 AND I-405  
INTERCHANGE

**1 MILE**

DOWNTOWN  
WOODINVILLE




# FIRST FLOOR PLAN

Suite	Lease Rate/Month	Size	NNN/Month	Available
Suite 110	\$1.85/SF, NNN	594 SF	\$0.74/SF	11/1/2026
Suite 140A	\$1.85/SF, NNN	1,546 SF	\$0.74/SF	8/1/2026
Suite 150	\$1.85/SF, NNN	611 SF	\$0.74/SF	Now



BOTHELL

 **6 MIN DRIVE**  
To Bothell

522

WOODINVILLE SNOMISH RD

REDMOND WOODINVILLE RD NE

WOODINVILLE

**SUBJECT  
PROPERTY**

DOWNTOWN WOODINVILLE  
SHOPPING CENTER



# WOODVIEW PLAZA

---

*Exclusively leased by*

**TODD GAUTHIER**

Executive Vice President

425.450.1118

todd.gauthier@kidder.com

**JASON BLOOM**

Executive Vice President

425.450.1102

jason.bloom@kidder.com

**CARTER NICHOLSON**

Senior Associate

425.241.9886

carter.nicholson@kidder.com

**KIDDER.COM**

This information supplied herein is from sources we deem reliable. It is provided without any representation, warranty, or guarantee, expressed or implied as to its accuracy. Prospective Buyer or Tenant should conduct an independent investigation and verification of all matters deemed to be material, including, but not limited to, statements of income and expenses. Consult your attorney, accountant, or other professional advisor.

