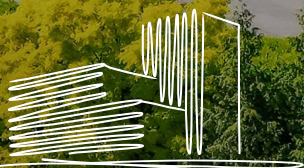


EASTPOINTE CORPORATE CENTER

22833 SE Black Nugget Road | Issaquah, WA 98029

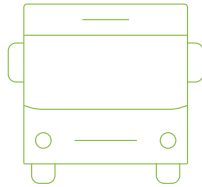


Lake Washington
PARTNERS

CBRE

welcome to

THE CENTER OF CONNECTION



a vibrant mix of coffee shops, dining and retail at your fingertips

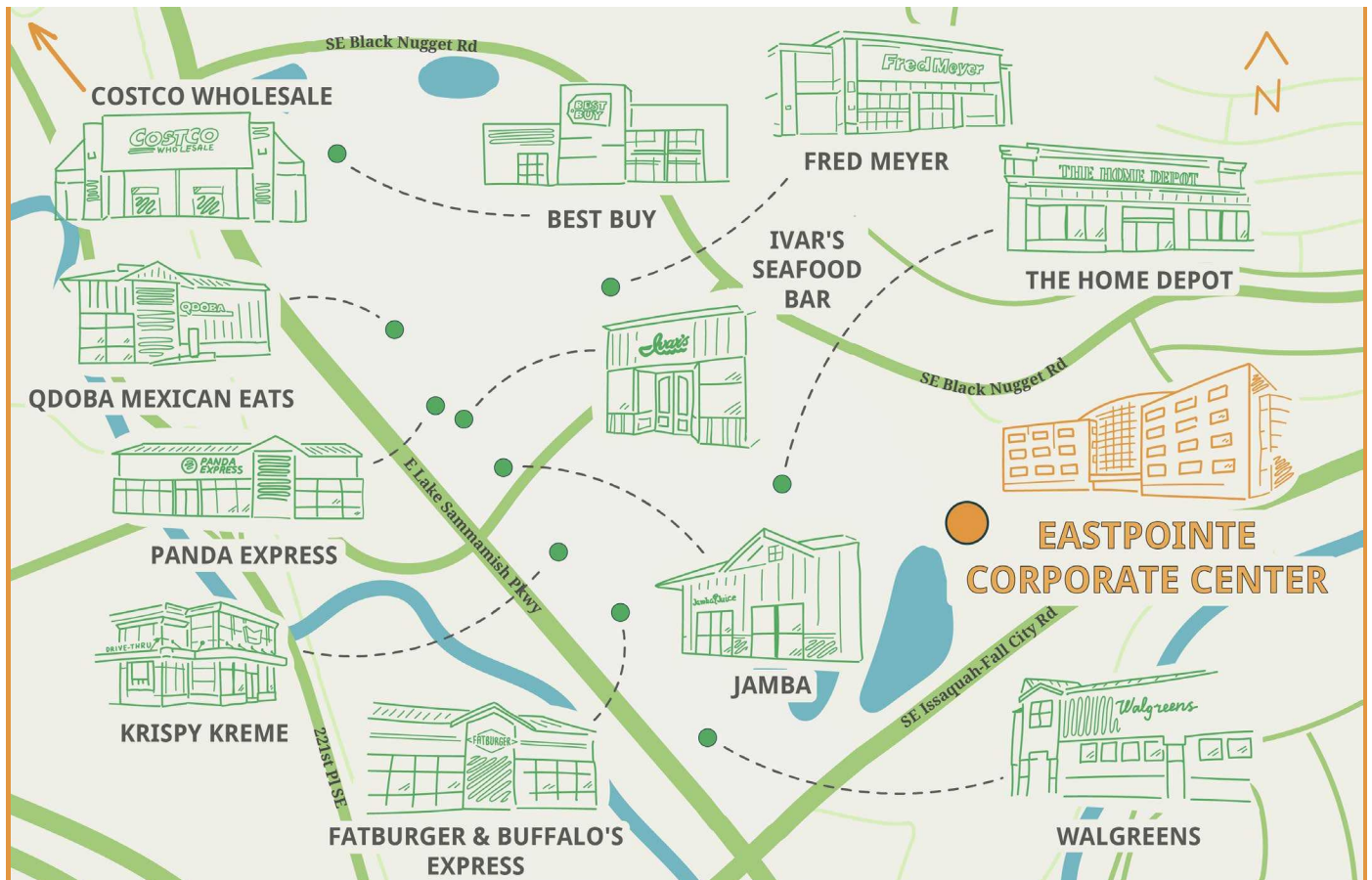
the entrance features a bus stop with direct connections to Issaquah Transit Center

Eastpointe Corporate Center offers a premier office experience in the heart of Issaquah, with seamless access to I-90.

Locally owned and managed by Lake Washington Partners, this Class A building features expansive views, abundant natural light, and walkable access to dining, retail and everyday conveniences making it an ideal setting for businesses to thrive.

visit the website

 eastpointecorporatecenter.com



availability

suite	±rsf	availability	tour	details
140	5,317	June 2026	 floor plan	Great mix of open and private office areas
310	1,757	Immediate	 floor plan	Market-ready suite with shared access to amenities
320	1,824	Immediate	 floor plan	Market-ready suite with shared access to amenities
330	1,548	Immediate	 floor plan	Market-ready suite with shared access to amenities
340	1,694	Immediate	 floor plan	Market-ready suite with shared access to amenities

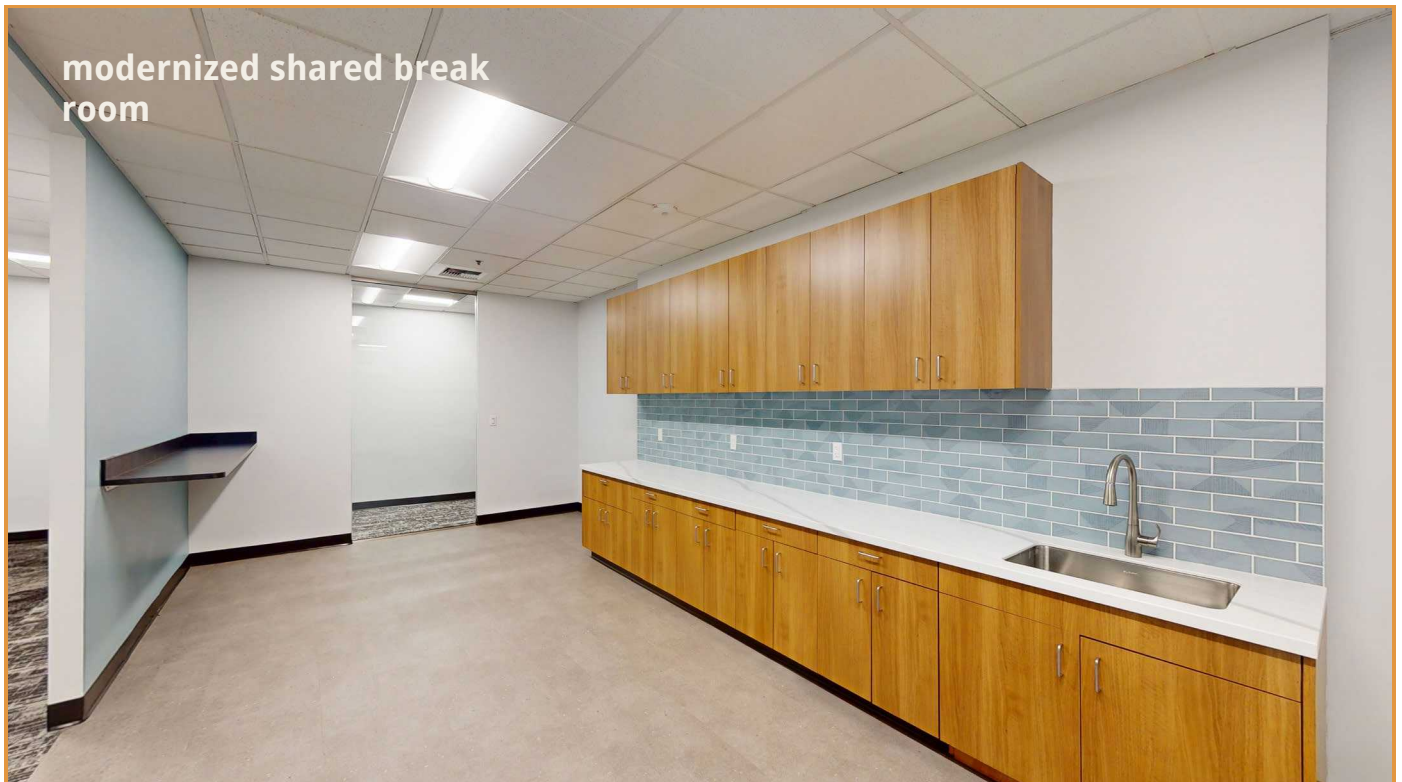
Third floor suites can be combined for up to 6,823 RSF



step into your next space



a vibrant hub



the LKWP difference

Building one of the US's great real estate portfolios.

At Lake Washington Partners, greatness is more than a goal—it's a journey we embark on every day. Our story of greatness unfolds through meticulous attention to detail and an unwavering commitment to excellence. It's told in the way we manage and maintain our properties, ensuring they remain at the forefront of quality and functionality. Greatness is about building relationships grounded in trust, integrity, and long-term partnership.

lkwp.com

eastpointecorporatecenter.com

follow us on

in

inquiries

Jeff Jochums

Executive Vice President

 jeff.jochums@cbre.com

 425.462.6971

 cbre.com/bellevue

Scott Davis

Executive Vice President

 scott.davis@cbre.com

 425.462.6912

ownership



Lake Washington
PARTNERS

leasing

CBRE