

1441 Court A

1441 Court A, Tacoma, WA 98402



NEWMARK

Levi Bundrant

t 425-409-7405

Levi.Bundrant@nmrk.com

Ed Mao

t 310-694-7191

Edward.Mao@nmrk.com

The Property

1441 Court A offers a unique sublease opportunity in downtown Tacoma with existing data center and infrastructure improvements in place. The property includes a combination of raised-floor server space, office areas, loading capabilities, ample on-site parking, and strong signage opportunities with convenient access to I-5, SR-705, downtown Tacoma, and the Port of Tacoma. Flexible layouts and existing infrastructure make the space well suited for technology, infrastructure, operations, or other specialized users.



NEWMARK

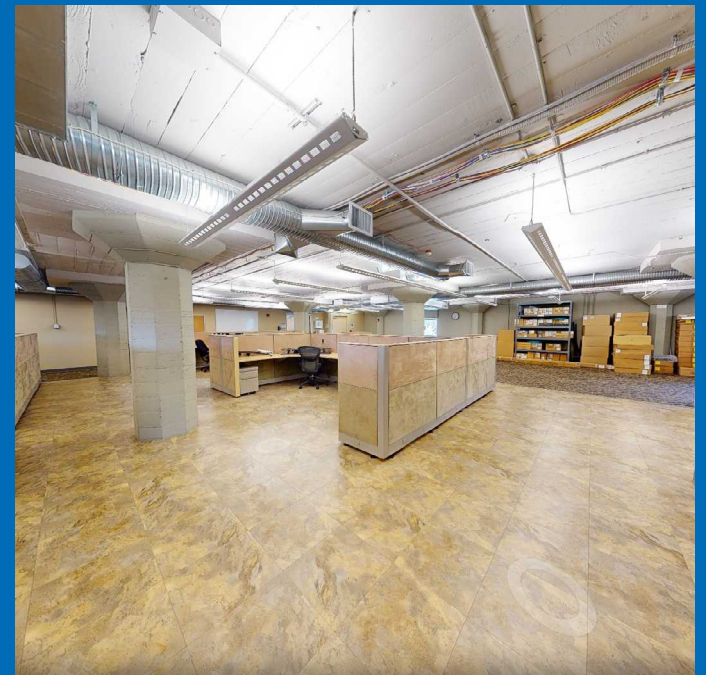
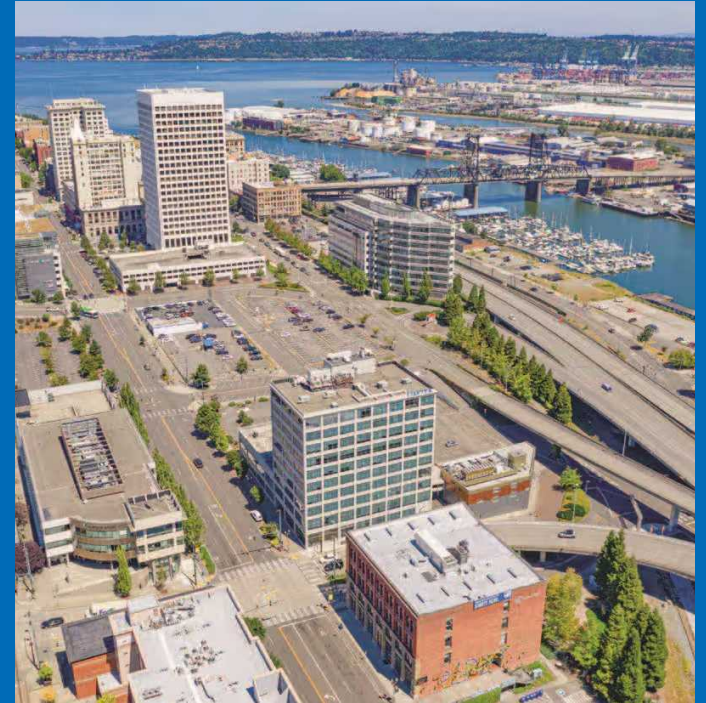
Space Highlights

- 23,001 SF Available
- Term through November 2032
- Existing raised-floor server environment
- Office and operational support areas
- Loading dock access
- Ample on-site parking
- Strong signage opportunities
- Fiber/data infrastructure throughout
- Convenient access to I-5, SR-705, Downtown Tacoma, and Port of Tacoma
- Flexible layout for a variety of operational uses

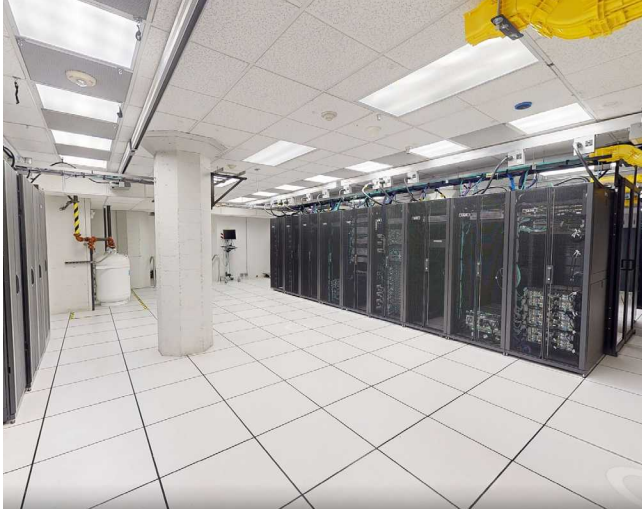
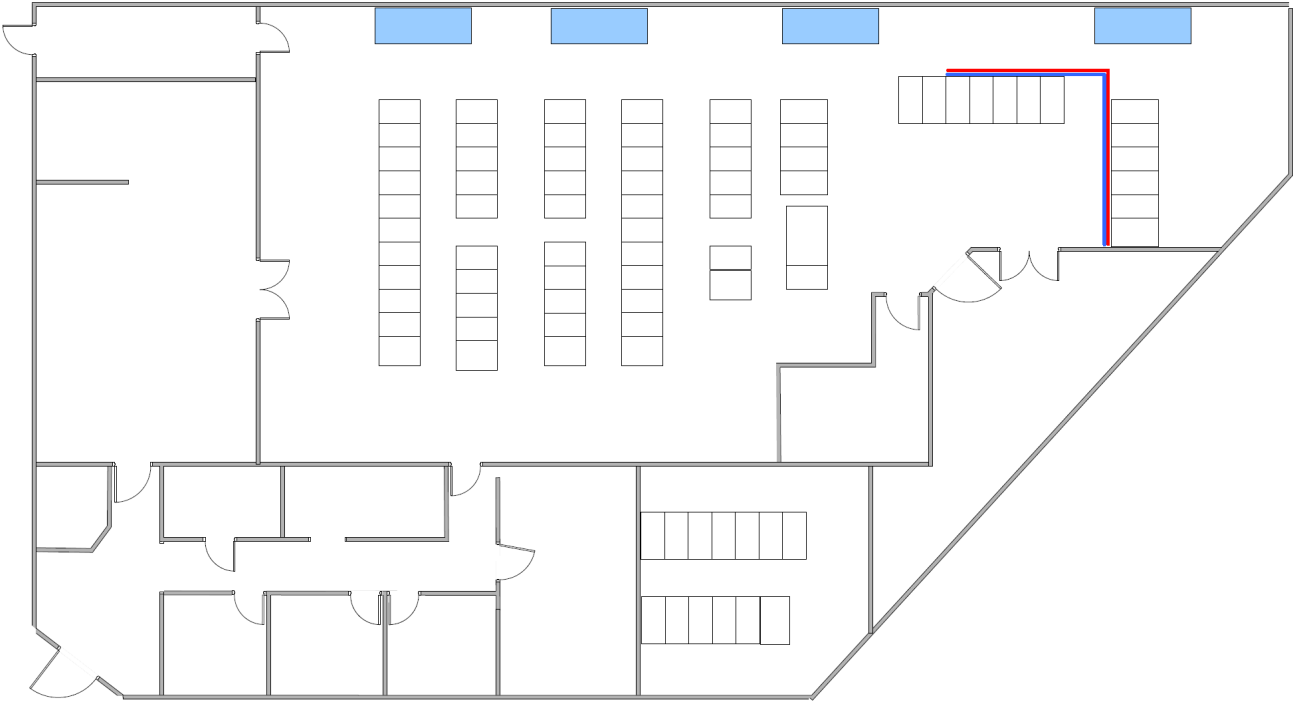
Power / Data Center Highlights

- 1200-amp, 480-volt, 3-phase power
- Eaton UPS uninterruptible power supply
- 1 CAT 750 KW / 987 KVA generator
- 1 Kohler 250 KW / 325 KVA generator
- Central AC / climate-controlled environment
- FM-200 fire suppression system with VESDA smoke detection
- (5) 30-ton, Arctic Chill, air cooled chiller modules with (2) 15 ton scroll compressors per module, R410A refrigerant, variable speed EC condenser fans, and master microprocessor with 7" graphical interface display

NEWMARK



First Floor | 5,560 RSF

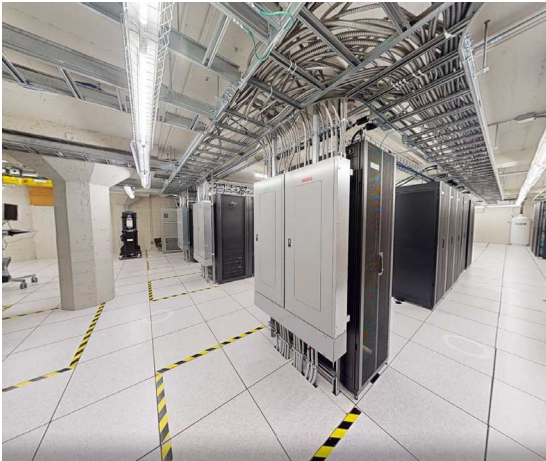
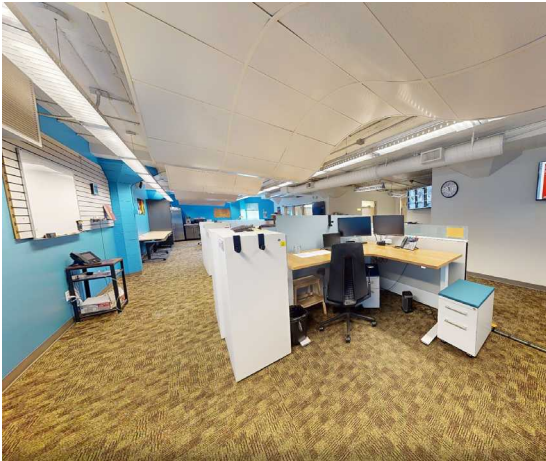
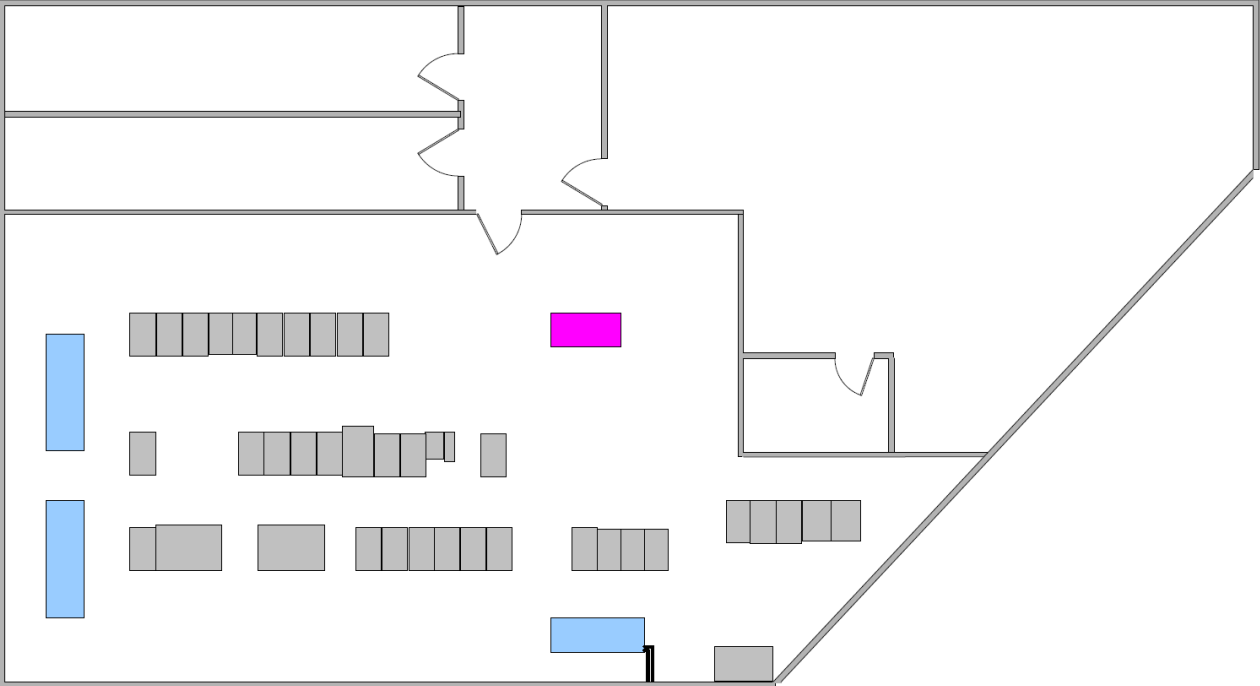


[View Virtual Tour](#)

Additional Basement
Space - 6,293 RSF

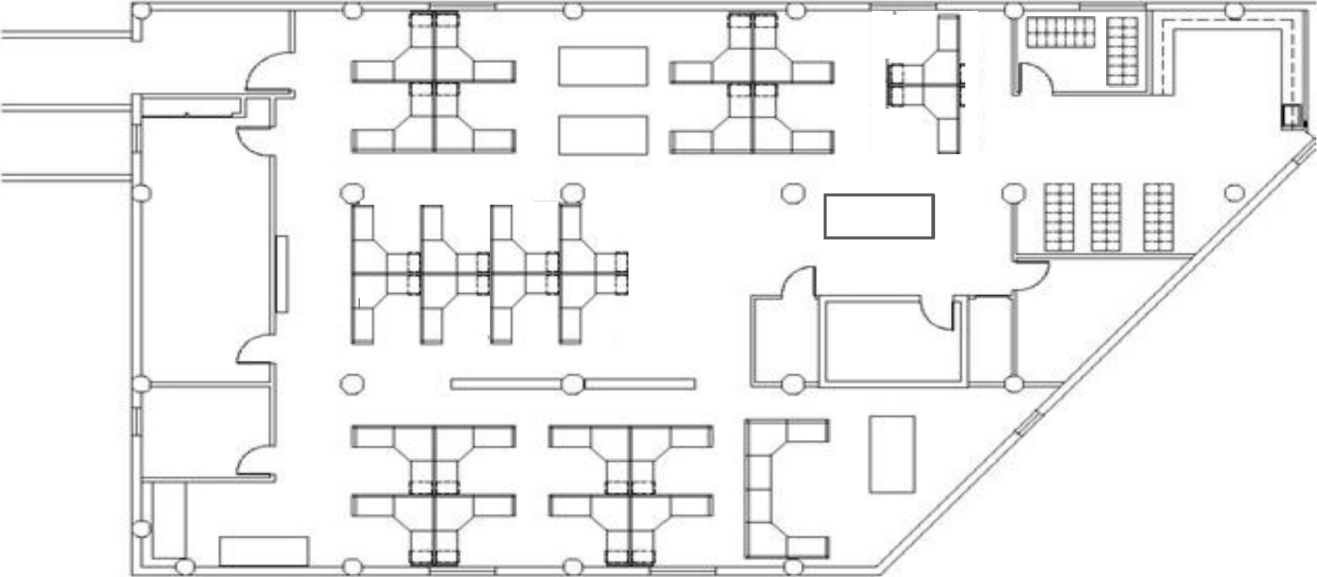
[View Virtual Tour](#)

Second Floor | 5,574 RSF



[View Virtual Tour](#)

Third Floor | 5,574 RSF



[View Virtual Tour](#)



1441 Court A

1441 Court A

1441 Court A, Tacoma, WA 98402

Levi Bundrant

t 425-409-7405

Levi.Bundrant@nmrk.com

Ed Mao

t 310-694-7191

Edward.Mao@nmrk.com

NEWMARK

The distributor of this communication is performing acts for which a real estate license is required. The information contained herein has been obtained from sources deemed reliable but has not been verified and no guarantee, warranty or representation, either express or implied, is made with respect to such information. Terms of sale or lease and availability are subject to change or withdrawal without notice. MP-818