

# PACIFIC BUSINESS PARK BUILDING 9



*Industrial Space  
For Lease*

**6,400**  
SF TOTAL

**1,277**  
SF OFFICE

**10/1/26**  
AVAILABLE

6,400 SF available, 1,277 SF office

\$1.15/SF shell, \$1.35/SF office add-on + NNN

Four dock-high door, one grade-level door

Great parking

20' clear height

Tremendous access to I-5 & SR-167 via S 212th St

Comcast cable available

Live monitored camera security system

**DOUG KLEIN, SIOR**  
206.248.7348  
doug.klein@kidder.com

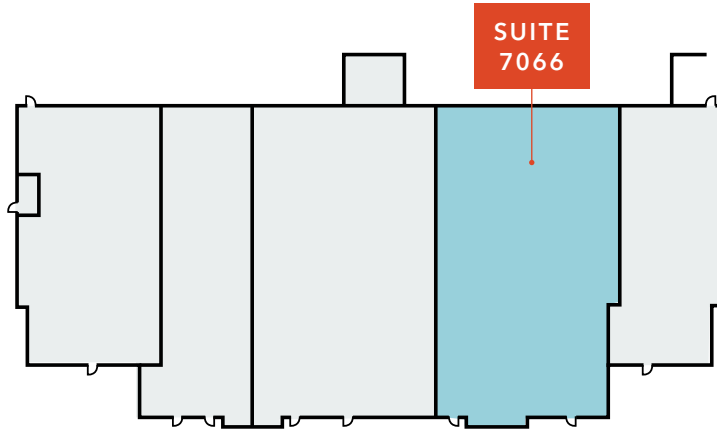
**KRAIG HEETER, SIOR**  
206.248.7313  
kraig.heeter@kidder.com

**COLT SHERRELL**  
206.498.4566  
colt.sherrell@kidder.com

**KIDDER.COM**

This information supplied herein is from sources we deem reliable. It is provided without any representation, warranty, or guarantee, expressed or implied as to its accuracy. Prospective Buyer or Tenant should conduct an independent investigation and verification of all matters deemed to be material, including, but not limited to, statements of income and expenses. Consult your attorney, accountant, or other professional advisor.

FOR LEASE



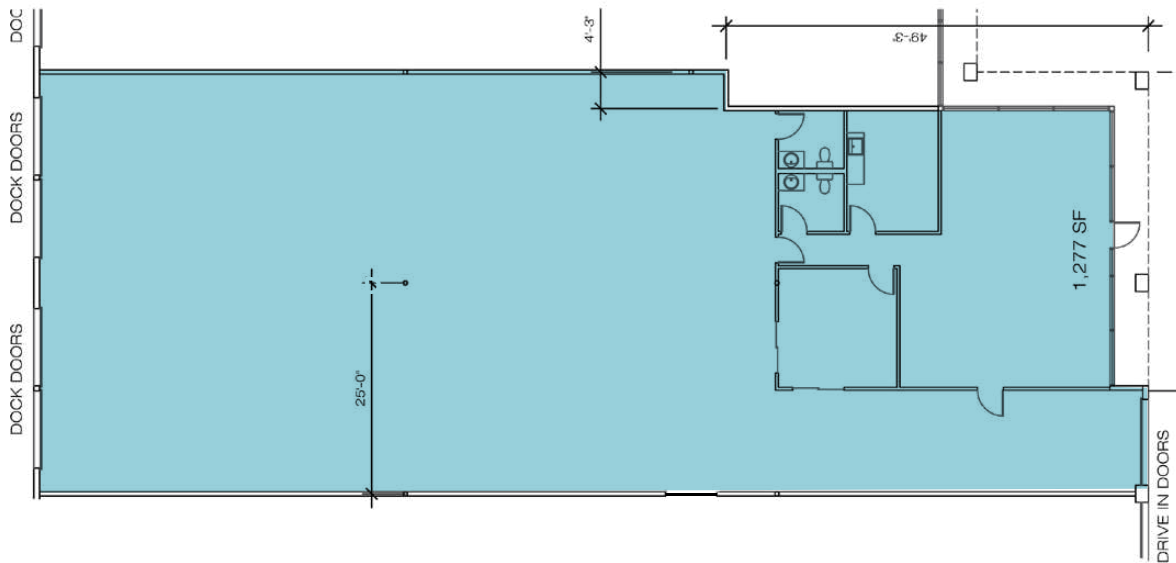
**\$1.15**

PSF SHELL, NNN

**\$1.35**

PSF OFFICE ADD-ON

BUILDING 9



SUITE 7066 FLOORPLAN



[KIDDER.COM](http://KIDDER.COM)

This information supplied herein is from sources we deem reliable. It is provided without any representation, warranty, or guarantee, expressed or implied as to its accuracy. Prospective Buyer or Tenant should conduct an independent investigation and verification of all matters deemed to be material, including, but not limited to, statements of income and expenses. Consult your attorney, accountant, or other professional advisor.



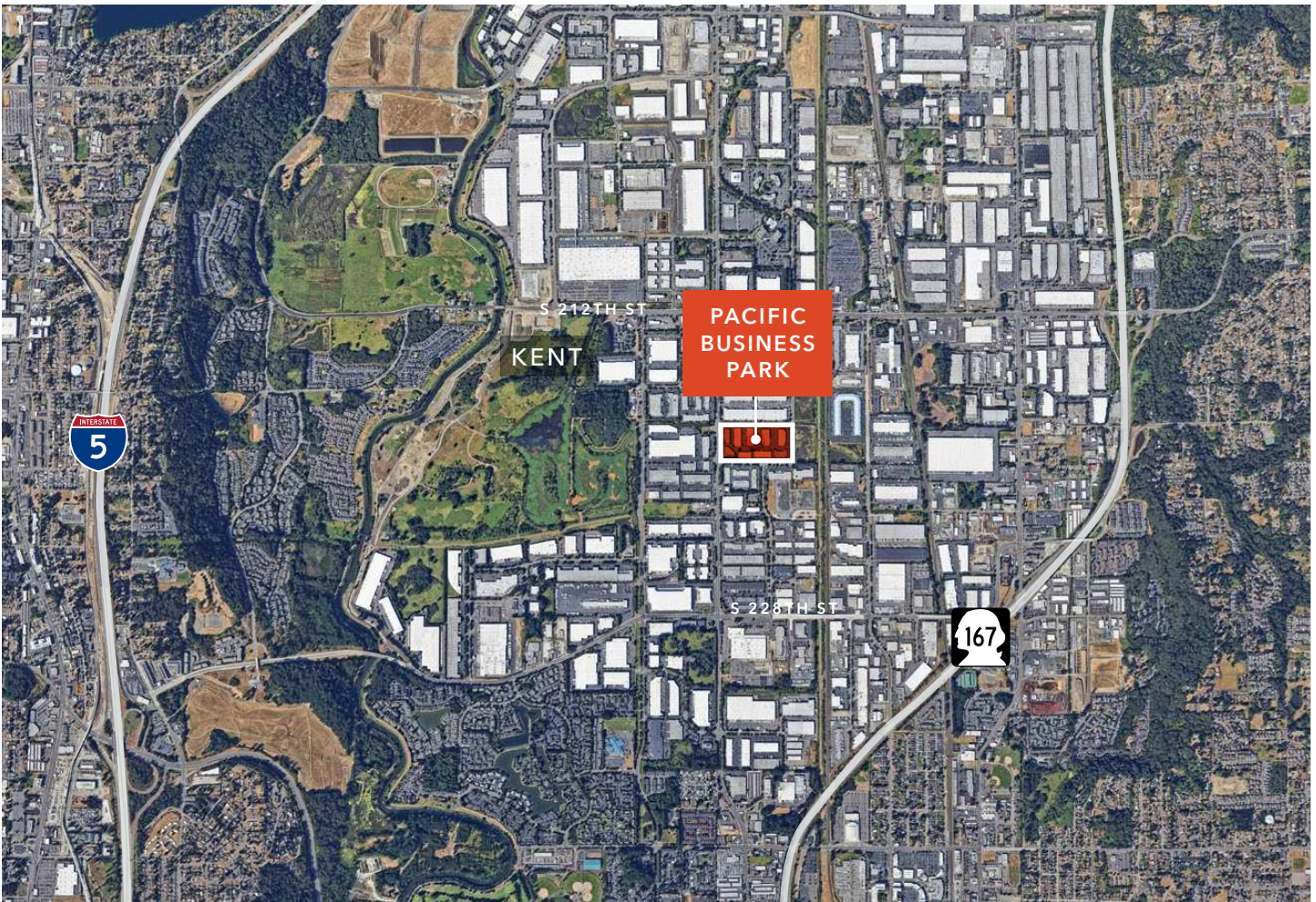
FOR LEASE



*L1*  
ZONING

*5 MIN*  
TO SR-167

*14 MIN*  
TO SEATAC AIRPORT



[KIDDER.COM](http://KIDDER.COM)

This information supplied herein is from sources we deem reliable. It is provided without any representation, warranty, or guarantee, expressed or implied as to its accuracy. Prospective Buyer or Tenant should conduct an independent investigation and verification of all matters deemed to be material, including, but not limited to, statements of income and expenses. Consult your attorney, accountant, or other professional advisor.

