

FOR LEASE

# PARK AT WOODINVILLE

*3,997 SF - 10,970 SF Available in Class-A Industrial Park*

SUITE  
19800

SUITE  
14227

WOODINVILLE, WA

km Kidder  
Mathews



## *Features*

- The 239,607 SF, 5-building park
- Provides great growth opportunity
- 24' clear height, 3-phase power
- Outstanding access to SR-522 and 2 miles from I-405 (one of the region's primary transportation corridors)
- Minutes to downtown Woodinville and numerous amenities
- Local, responsive ownership and property management

## *Contact Brokers for Lease Rates*

**TODD GAUTHIER**  
425.450.1118  
todd.gauthier@kidder.com

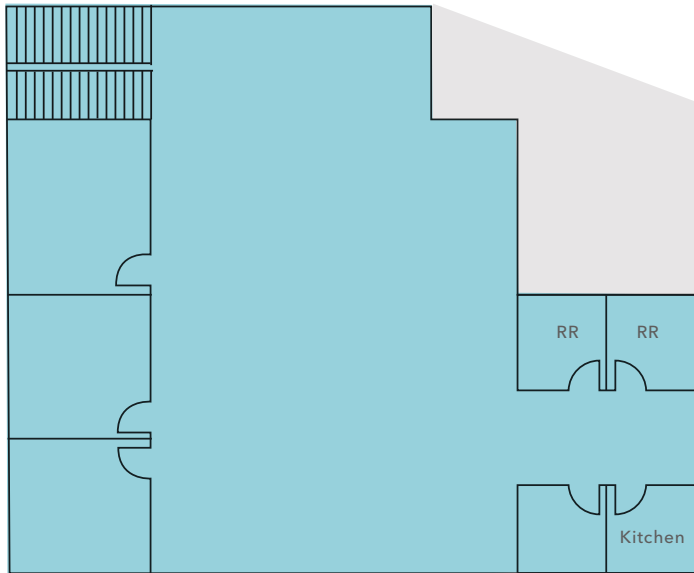
**JASON BLOOM**  
425.450.1102  
jason.bloom@kidder.com

# FLOOR PLAN - SUITE 14227

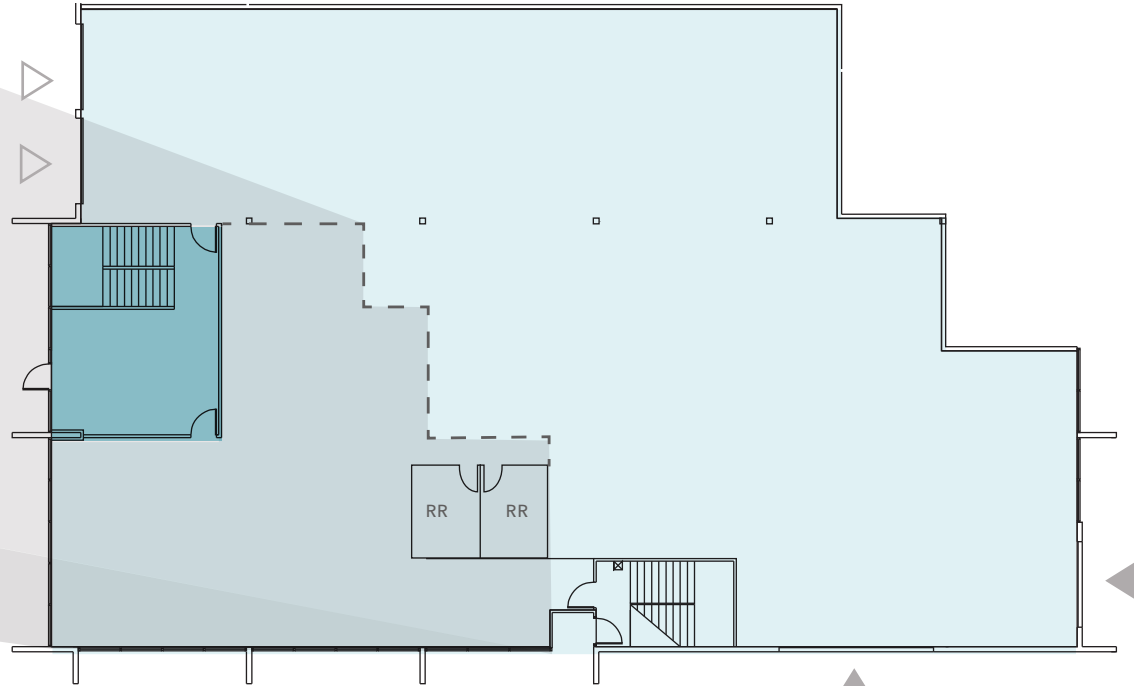
14227 NE 200th St, Woodinville, WA

- Office
- Warehouse
- Grade-level loading
- Dock-high loading

Second-Floor Office



First Floor



Oversized Grade Door  
16' H x 18' W

*10,970 SF*

TOTAL AVAILABLE

*2,793 SF*

OFFICE

*8,177 SF*

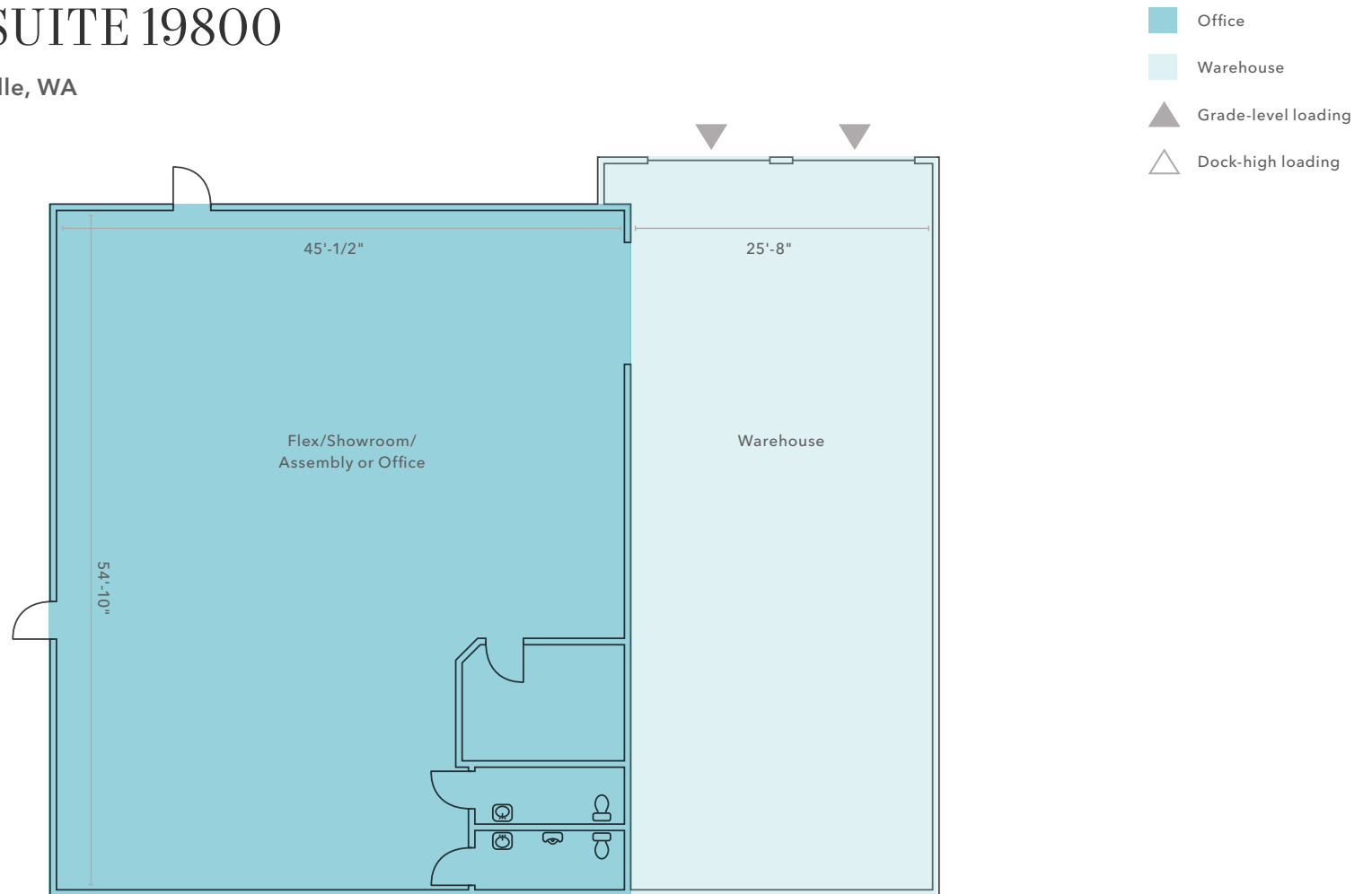
WAREHOUSE

Floorplan not to scale



# FLOOR PLAN - SUITE 19800


19800 141st Place NE, Woodinville, WA



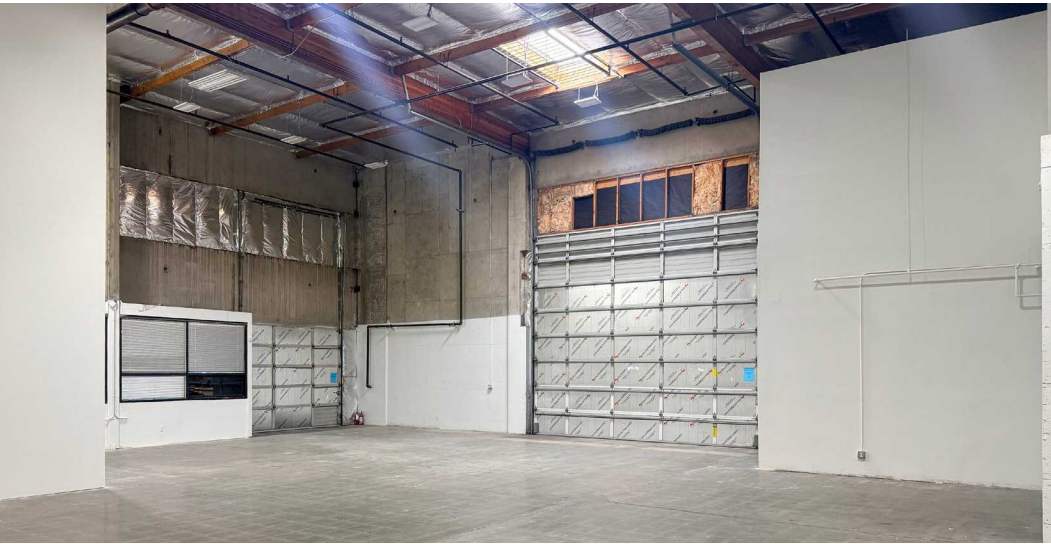
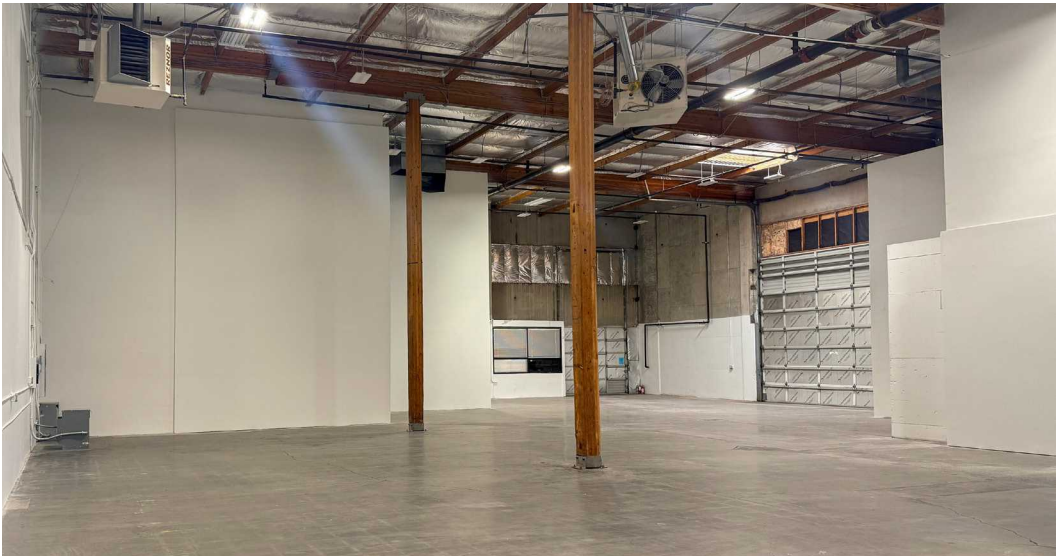
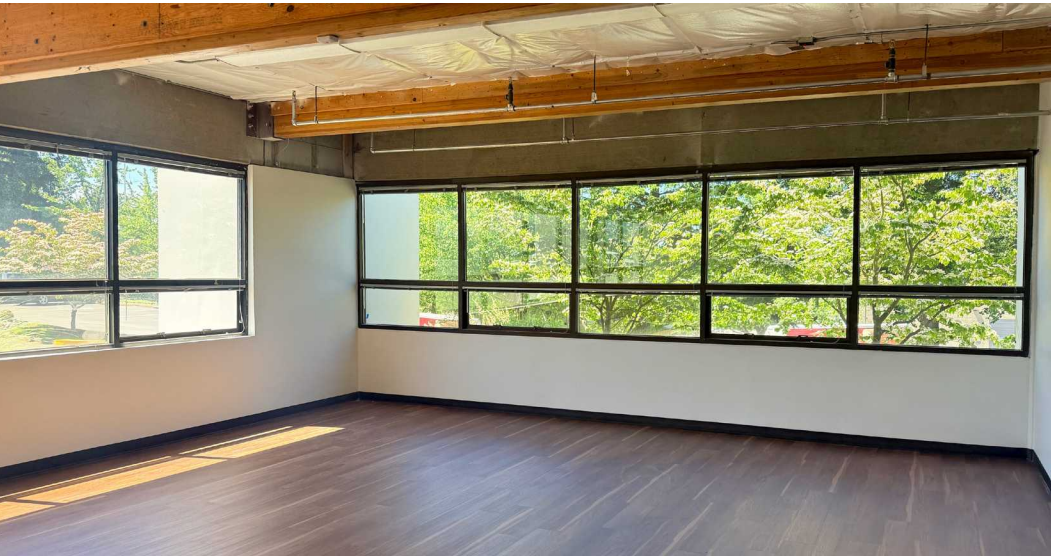
*3,997 SF*

TOTAL AVAILABLE

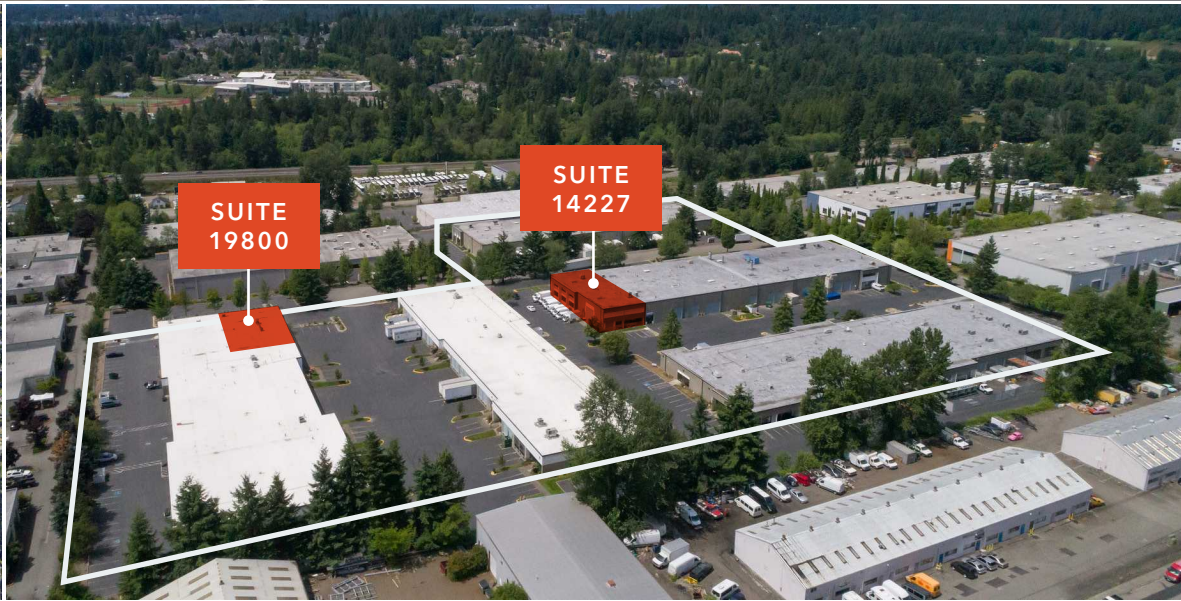
AVAILABLE FOR LEASE

Floorplan not to scale 

SUITE 14227



PARK AT WOODINVILLE



# PARK AT WOODINVILLE

*For more information, contact*

**TODD GAUTHIER**  
425.450.1118  
todd.gauthier@kidder.com

**JASON BLOOM**  
425.450.1102  
jason.bloom@kidder.com

**KIDDER.COM**

This information supplied herein is from sources we deem reliable. It is provided without any representation, warranty, or guarantee, expressed or implied as to its accuracy. Prospective Buyer or Tenant should conduct an independent investigation and verification of all matters deemed to be material, including, but not limited to, statements of income and expenses. Consult your attorney, accountant, or other professional advisor. All Kidder Mathews designs are the sole property of Kidder Mathews. Branded materials and layouts are not authorized for use by any other firm or person.

