

# 22145 68TH AVENUE SOUTH

## FOR SUBLEASE: 706 SF OFFICE

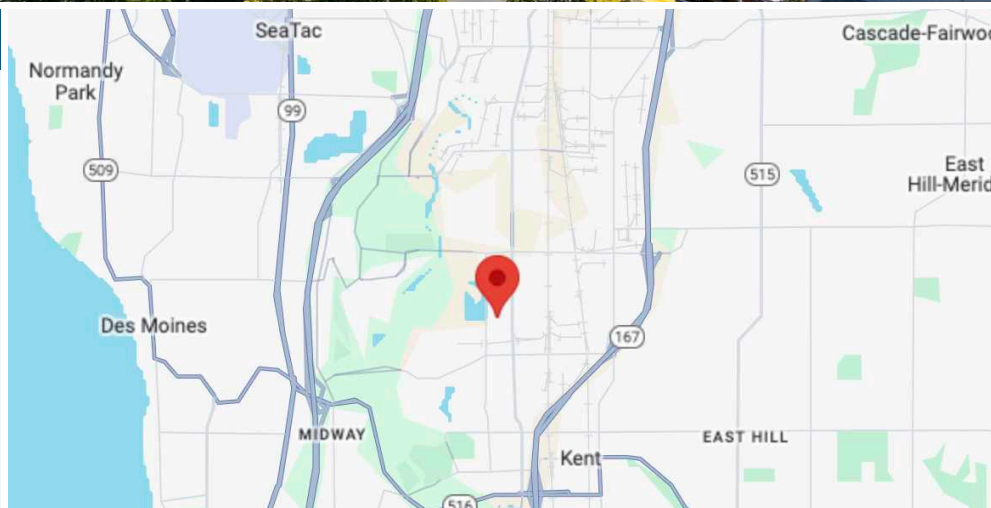
KENT, WA 98032

### QUALITY OFFICE SPACE WITH EASY ACCESS FROM WEST VALLEY HIGHWAY



#### SUBLEASE INFORMATION

- |                        |   |
|------------------------|---|
| <b>Available Size:</b> | 706 SF  |
| <b>Sublease Rate:</b>  | \$1,350/Mo, Gross   |
| <b>Available:</b>      | Now   |
| <b>Lease Term:</b>     | 1-5 Years   |
| <b>Notes:</b>          | <ul style="list-style-type: none"><li>• Ample Parking</li><li>• Direct Entry</li><li>• Quality Finishes</li></ul> |



**KERMIT JORGENSEN**  
206.787.1475  
kjorgensen@neilwalter.com

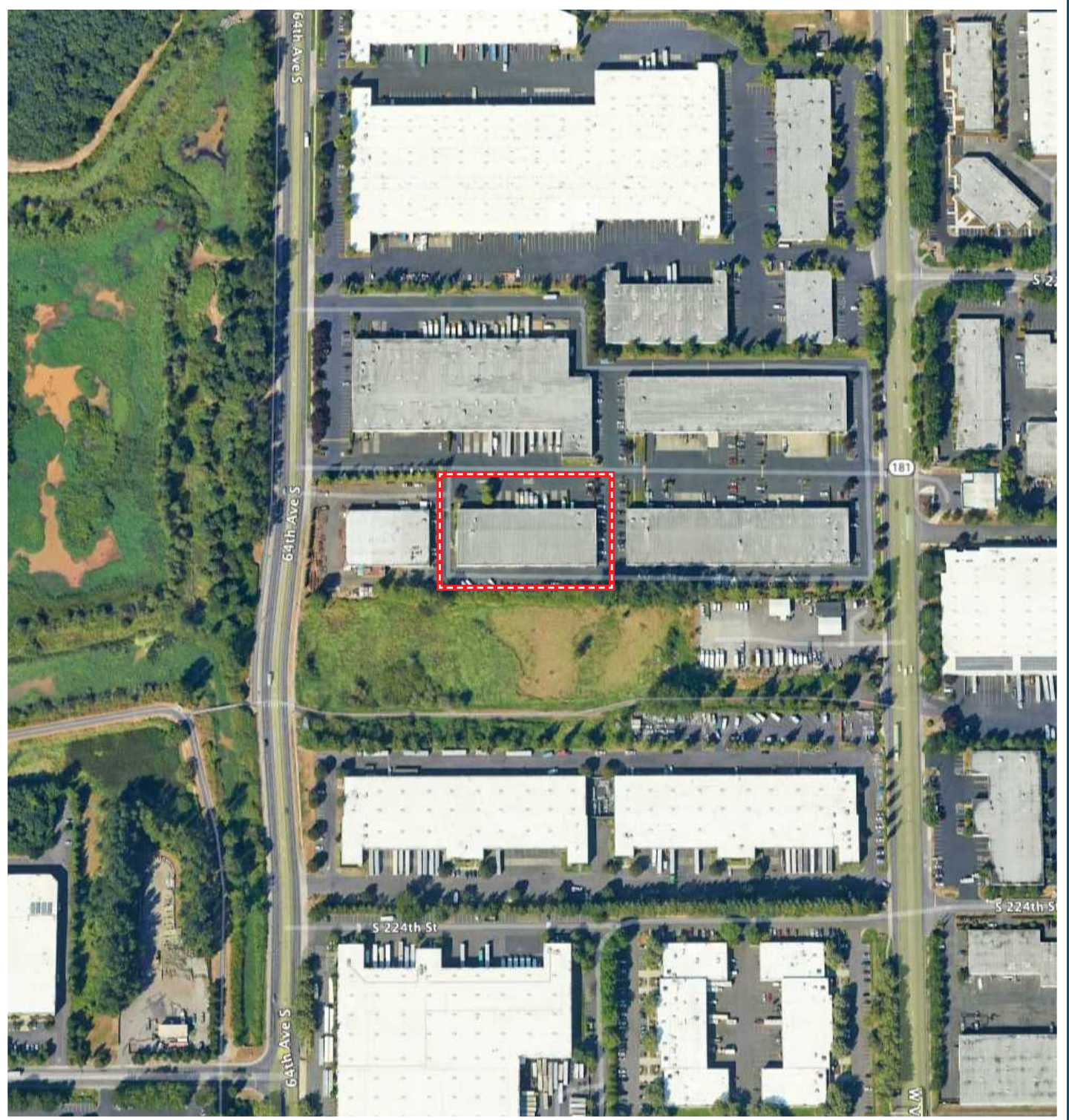
All information references in this document are approximate. The information contained herein is contained from sources deemed reliable. It is provided without representation, warranty, or guarantee, expressed or implied as to accuracy. Prospective buyer or tenant should conduct its own independent investigation relating to the property, government codes and regulations, allowed uses, and all other matters, regardless of whether they are referred to or contained in this document.

# 22145 68TH AVENUE SOUTH

KENT, WA 98032



NEIL WALTER  
COMPANY



**KERMIT JORGENSEN**

206.787.1475

[kjorgensen@neilwalter.com](mailto:kjorgensen@neilwalter.com)

550 S Michigan St

Seattle, WA 98108

206.787.1800

[www.neilwalter.com](http://www.neilwalter.com)

All information references in this document are approximate. The information contained herein is contained from sources deemed reliable. It is provided without representation, warranty, or guarantee, expressed or implied as to accuracy. Prospective buyer or tenant should conduct its own independent investigation relating to the property, government codes and regulations, allowed uses, and all other matters, regardless of whether they are referred to or contained in this document.