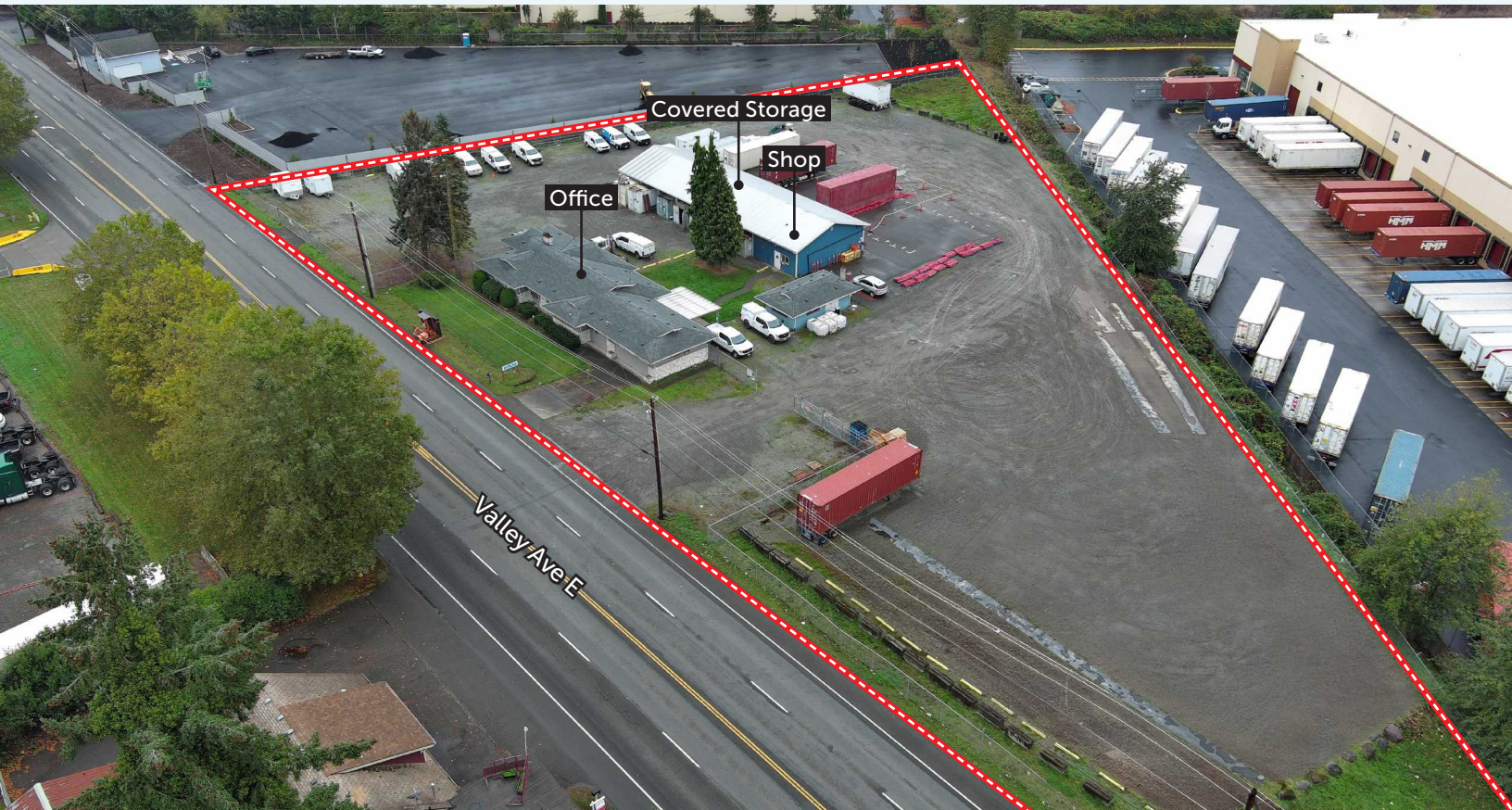


1124 VALLEY AVE E

FOR LEASE: 2.56 ACRE IOS SITE

1124 VALLEY AVE E | PUYALLUP, WA

FENCED OFFICE, SHOP & YARD ON 2.56 ACRES



LEASE INFORMATION

Property Size	Office Size	Covered Storage	Shop Space	Loading	Lease Rate
2.56 Acres	3,205 SF	3,100 SF	880 SF	1 GL Door	\$36,000/mo, NNN

PROPERTY DETAILS

- Fantastic location on Valley Ave
- Entire site is fenced
- Compacted gravel yard
- 8 minutes to I-5 & 5 minutes to Hwy-167
- Available 8/1/2027, possibly sooner



JIM HONAN
206.787.1464

jhonan@neilwalter.com

KERMIT JORGENSEN
206.787.1475

kjorgensen@neilwalter.com

All information references in this document are approximate. The information contained herein is contained from sources deemed reliable. It is provided without representation, warranty, or guarantee, expressed or implied as to accuracy. Prospective buyer or tenant should conduct its own independent investigation relating to the property, government codes and regulations, allowed uses, and all other matters, regardless of whether they are referred to or contained in this document.

1124 VALLEY AVE E

1124 VALLEY AVE E | PUYALLUP, WA



DRIVE-TIMES

- Port of Tacoma – 15 Minutes
- Interstate 5 – 8 Minutes



JIM HONAN
206.787.1464

jhonan@neilwalter.com

KERMIT JORGENSEN
206.787.1475

kjorgensen@neilwalter.com

550 S Michigan St
Seattle, WA 98108
206.787.1800

www.neilwalter.com

All information references in this document are approximate. The information contained herein is contained from sources deemed reliable. It is provided without representation, warranty, or guarantee, expressed or implied as to accuracy. Prospective buyer or tenant should conduct its own independent investigation relating to the property, government codes and regulations, allowed uses, and all other matters, regardless of whether they are referred to or contained in this document.