

Includes a
Drive-Thru!



2209 E 29TH AVENUE

Spokane, WA 99201

SUITE 2009 AVAILABLE FOR LEASE

Lease Rate: \$28 PSF

Suite SF: 1,368 SF

Lease Type: NNN (est \$8.73 PSF)

Parking: ± 192 Parking Stalls

Exclusively listed by:

Bob Spooner
Vice President & Managing Broker
509.999.1959
bspooner@g-b.com

Cory Barbieri
Partner/Commercial Broker
509.344.4901
cory.barbieri@g-b.com

Ryan Oberg
Commercial Leasing and Sales Broker
509.990.8423
ryan.oberg@g-b.com

High-Profile Retail Space for Lease With a Drive-Thru!



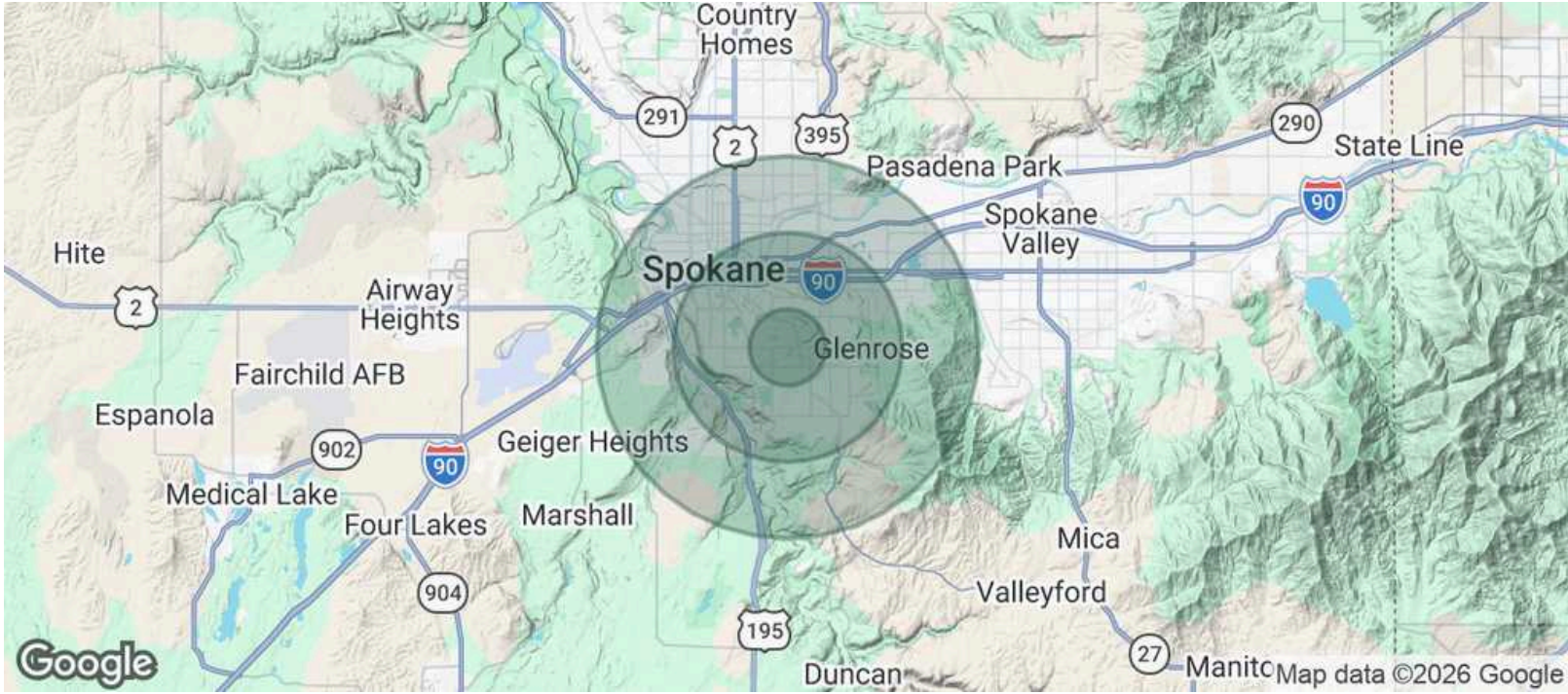
Located on Spokane's highly coveted South Hill, 2209 E 29th Avenue anchors a prime opportunity within Grapetree Village, a vibrant mixed-use development blending retail and office spaces. This premier location offers 1,368 square feet of available space, boasting great visibility, a dedicated drive-thru, and unique architectural character that instantly stands out. Designed with flexibility in mind to accommodate a variety of layout options, the property is fully equipped to handle high-traffic businesses by offering abundant parking with approximately 192 parking stalls on-site.

Bob Spooner
Vice President & Managing Broker
509.999.1959
bspooner@g-b.com

Cory Barbieri
Partner/Commercial Broker
509.344.4901
cory.barbieri@g-b.com

Ryan Oberg
Commercial Leasing and Sales Broker
509.990.8423
ryan.oberg@g-b.com

Demographics



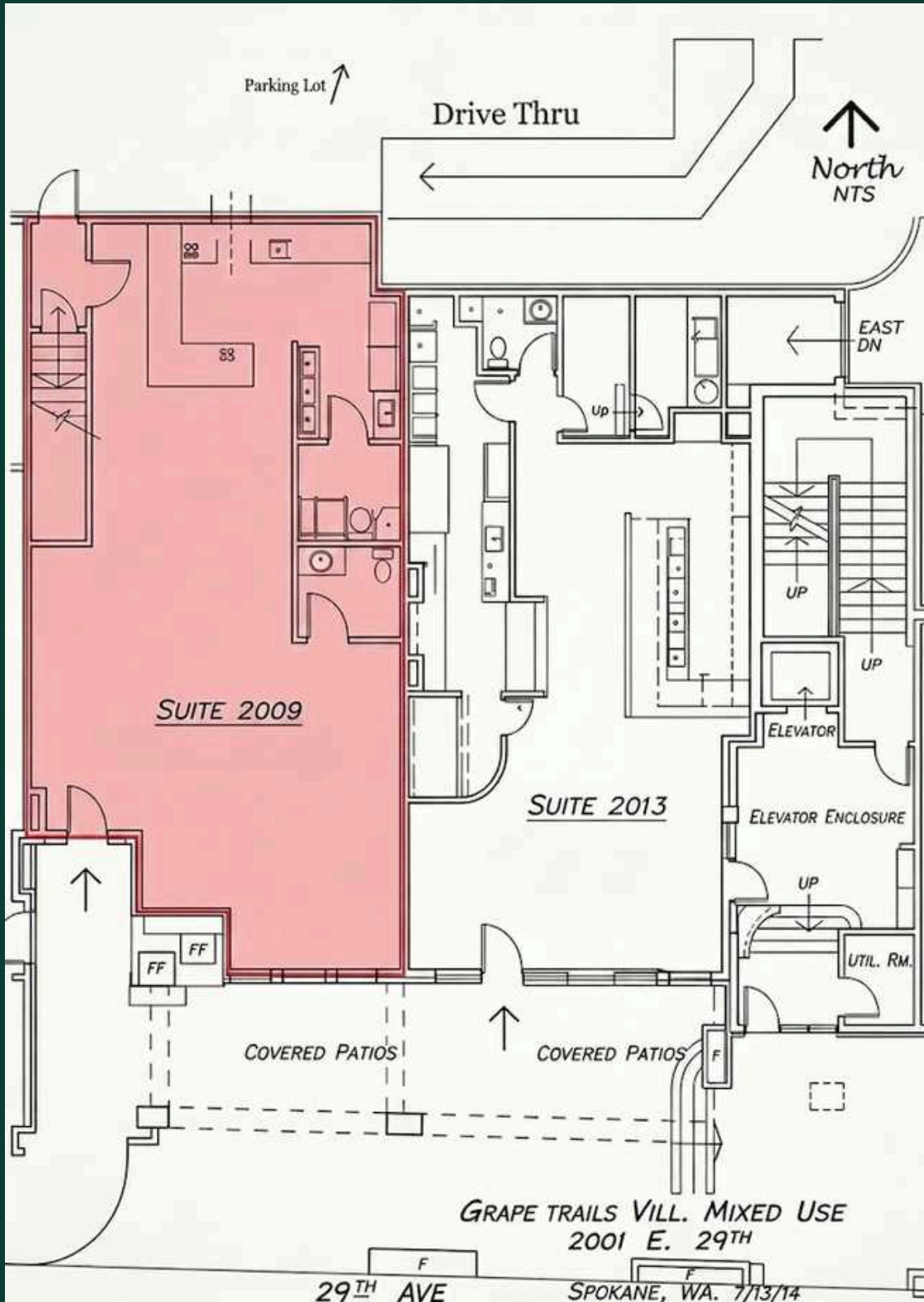
POPULATION	1 MILE	3 MILES	5 MILES
	15,518	88,179	180,282
HOUSEHOLDS	1 MILE	3 MILES	5 MILES
	6,616	37,586	76,983
AVG HOUSEHOLD INCOME	1 MILE	3 MILES	5 MILES
	\$66,766	\$69,027	\$58,842

Bob Spooner
 Vice President & Managing Broker
 509.999.1959
 bspooner@g-b.com

Cory Barbieri
 Partner/Commercial Broker
 509.344.4901
 cory.barbieri@g-b.com

Ryan Oberg
 Commercial Leasing and Sales Broker
 509.990.8423
 ryan.oberg@g-b.com

Suite 2009 - 1,368 SF



Bob Spooner
Vice President & Managing Broker
509.999.1959
bspooner@g-b.com

Cory Barbieri
Partner/Commercial Broker
509.344.4901
cory.barbieri@g-b.com

Ryan Oberg
Commercial Leasing and Sales Broker
509.990.8423
ryan.oberg@g-b.com



Businesses Nearby

- Concerta Urgent Care
- Clonniger & Carr Family Dentistry
- Weldon Barber
- CW Title and Escrow
- GESA Credit Union
- The Coalition - Fitness Community Gym
- Sarah Hamilton Face
- Thai Bamboo Restaurant

FOR LEASE

2209 E 29th Ave
Spokane, WA 99203

General Warranty Disclaimer: G&B makes no warranties, representations, or guarantees as to Seller/Owner's supplied information or the Property itself. G&B disclaims all warranties (express and implied) as to the Property and Seller/Owner's statements/information about the Property.

Buyer/Lessee shall not rely on Property information supplied by Seller/Owner or G&B. Buyer/Lessee shall conduct its own due diligence to verify any information and the Property's suitability for specific or general purposes.

Copyright information G&B respects the intellectual property of others and its Digital Millennium Copyright Act.

Bob Spooner
Vice President & Managing Broker
509.999.1959
bspooner@g-b.com

Cory Barbieri
Partner/Commercial Broker
509.344.4901
cory.barbieri@g-b.com

Ryan Oberg
Commercial Leasing and Sales Broker
509.990.8423
ryan.oberg@g-b.com