

FAIRWOOD PLAZA

FAIRWOOD PLAZA

1 4 4 1 0 S E P E T R O V I T S K Y R D | R E N T O N , W A 9 8 0 5 8

**14410 SE PETROVITSKY RD
RENTON, WA 98058**



43,204 SF

CENTER SF

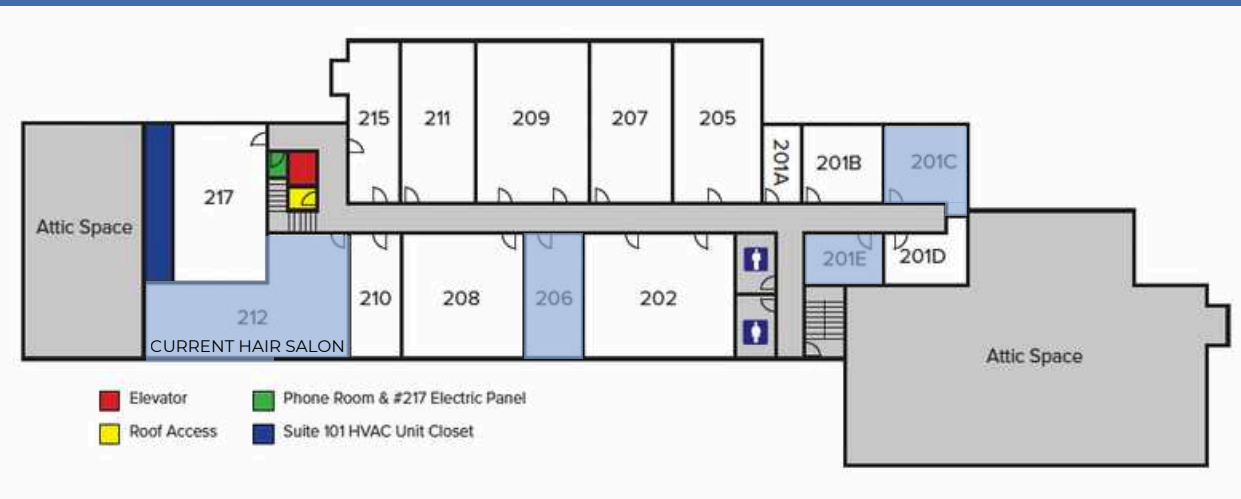
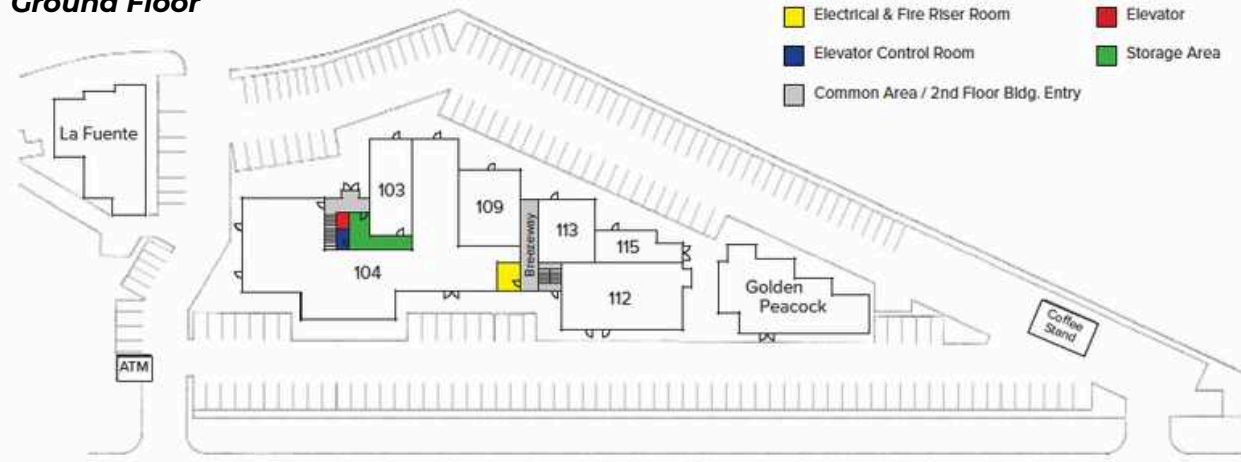
317-1,533 SF

RETAIL FOR LEASE

CALL

FOR RATES

Ground Floor



| SUITE | TENANT | SIZE (SF) |
|---------------------|------------------------------|-----------|
| GROUND FLOOR | | |
| 103 | Fairwood Animal Clinic | 1,800 |
| 104 | Valley Medical Center | 9,636 |
| 109 | Fairwood Chiropractic | 1,600 |
| 112 | JSM Liquor | 4,185 |
| 113 | Fairwood Dental | 1,600 |
| 115 | Plaza Cleaners | 1,066 |
| Bldg A | Uno Maz | 3,840 |
| Bldg C | Golden Peacock | 5,027 |
| ATM | BECU | -- |
| Coffee Stand | There Ya Go Espresso | 1,250 |
| SECOND FLOOR | | |
| 201A | Clearon Mortgage | 236 |
| 201B | Farmer's Insurance | 444 |
| 201C | AVAILABLE | 462 |
| 201D | GS Nail | 319 |
| E201 | AVAILABLE 12/02/2026 | 317 |
| 202 | A&M Insurance | 1,361 |
| 205 | Midway Chiropractic | 800 |
| 206 | AVAILABLE | 620 |
| 207 | Fairwood CPA Services | 930 |
| 208 | Fairwood Financial Services | 971 |
| 209 | Redesign Health | 1,247 |
| 210 | Marriott Systems Engineering | 648 |
| 211 | Wesley Homes | 936 |
| 212 | AVAILABLE | 1,533 |
| 215 | Newhaus Construction | 620 |
| 217 | LL Storage | 933 |

1 MILE 3 MILES 5 MILES

| | | | |
|-------------------------|-----------|-----------|-----------|
| 2025 POPULATION* | 13,296 | 86,769 | 200,432 |
| 2025 DAYTIME POPULATION | 6,760 | 38,672 | 156,169 |
| 2025 HOUSEHOLDS* | 5,270 | 31,828 | 74,500 |
| 2025 AVG HH INCOME | \$160,465 | \$166,547 | \$157,866 |
| 2025 MEDIAN HH INCOME | \$122,364 | \$128,900 | \$122,309 |
| 2025 TOTAL EMPLOYEES | 2,518 | 13,135 | 98,165 |



FAIRWOOD
GOLF &
COUNTRY CLUB

SAFeway
MUDBAY
CHASE
KUMON
ACE Hardware
MOD
LA FITNESS

AutoZone
KeyBank

O'Reilly
AUTO PARTS
Papa Murphy's
TAKE N BAKE PIZZA

FAIRWOOD
PLAZA



GREG CLOSE

PRESIDENT

GREG@PAADVISORS.COM

425.765.4435

SYDNEY LYBBERT

SENIOR ASSOCIATE BROKER
SYDNEY@PAADVISORS.COM

425.326.3742

