

**BUSINESS PARK SPACE AVAILABLE**  
ADJACENT TO PAINE FIELD AIRPORT

# PAINE FIELD

## BUSINESS PARK

**2615 WEST CASINO ROAD**  
**EVERETT, WASHINGTON 98204**



**BRODERICK**  
• GROUP •

**CONNOR GILCHRIST**  
425.274.4286  
[gilchrist@broderickgroup.com](mailto:gilchrist@broderickgroup.com)

**RAWLEY HOLMBERG**  
425.274.4284  
[holmberg@broderickgroup.com](mailto:holmberg@broderickgroup.com)

**SAMSON TORO**  
425.274.4289  
[toro@broderickgroup.com](mailto:toro@broderickgroup.com)

OWNED AND MANAGED BY:

  
**Schnitzer**  
PROPERTIES

# PAINE FIELD

## BUSINESS PARK

2615 WEST CASINO ROAD  
EVERETT, WASHINGTON 98204

### PROPERTY FEATURES

- High profile space catering to service companies, small businesses, sales & distribution centers
- Grade level loading
- Warehouse ceiling height: 13' to bottom of joists – 15' to bottom of roof
- Convenient South Everett location
- Across the street from Boeing 777 & 787 plant
- Direct access to SR-526 & I-5
- Restaurants and shopping center nearby

### SITE PLAN



SUITE	TOTAL SF	OFFICE SF	WAREHOUSE SF	AVAILABILITY	BASE RENT	NNN	GROSS RENT
<u>1B</u>	1,128 RSF	571 RSF	557 RSF	NOW	\$1,580	\$421	\$2,001
<u>3AB</u>	2,245 RSF	452 RSF	1,793 RSF	NOW	\$3,143	\$837	\$3,980
<u>5A</u>	1,961 RSF	581 RSF	1,380 RSF	NOW	\$2,745	\$726	\$3,471
<u>6F</u>	1,614 RSF	520 RSF	1,094 RSF	NOW	\$2,260	\$662	\$2,922



**CONNOR GILCHRIST**  
425.274.4286  
[gilchrist@broderickgroup.com](mailto:gilchrist@broderickgroup.com)

**RAWLEY HOLMBERG**  
425.274.4284  
[holmberg@broderickgroup.com](mailto:holmberg@broderickgroup.com)

**SAMSON TORO**  
425.274.4289  
[toro@broderickgroup.com](mailto:toro@broderickgroup.com)

OWNED AND MANAGED BY:



# PAINE FIELD

## BUSINESS PARK

2615 WEST CASINO ROAD  
EVERETT, WASHINGTON 98204

### SUITE 1B

AVAILABLE NOW

TOTAL SF: 1,128 RSF

OFFICE SF: 571 RSF

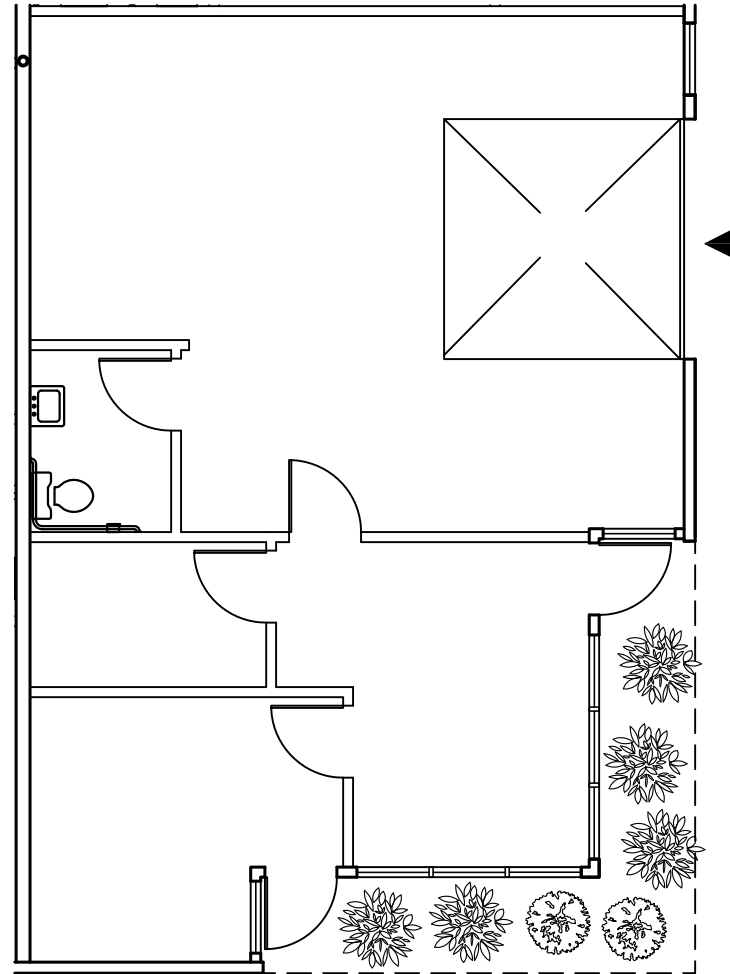
WAREHOUSE SF: 557 RSF

BASE RENT: \$1,580

NNN: \$421

GROSS RENT: \$2,001

*The information contained herein has been given to us by the owner or sources that we deem reliable. We have no reason to doubt its accuracy, but we do not guarantee it. Prospective tenants should carefully verify all information contained herein.*



↑ BACK TO AVAILABLE SPACE



**BRODERICK**  
GROUP

**CONNOR GILCHRIST**  
425.274.4286  
[gilchrist@broderickgroup.com](mailto:gilchrist@broderickgroup.com)

**RAWLEY HOLMBERG**  
425.274.4284  
[holmberg@broderickgroup.com](mailto:holmberg@broderickgroup.com)

**SAMSON TORO**  
425.274.4289  
[toro@broderickgroup.com](mailto:toro@broderickgroup.com)

OWNED AND MANAGED BY:

  
**Schnitzer**  
PROPERTIES

# PAINE FIELD

## BUSINESS PARK

2615 WEST CASINO ROAD  
EVERETT, WASHINGTON 98204

### SUITE 3 AB

AVAILABLE NOW

TOTAL SF: 2,245 RSF

OFFICE SF: 452 RSF

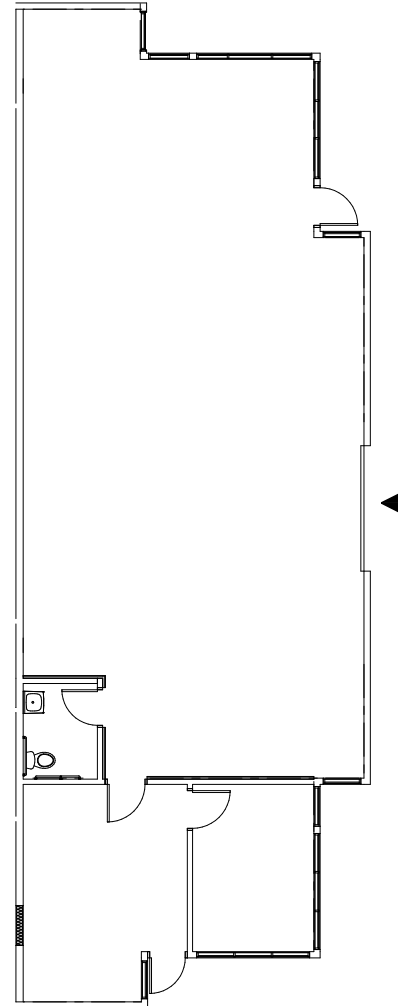
WAREHOUSE SF: 1,793 RSF

BASE RENT: \$3,143

NNN: \$837

GROSS RENT: \$3,980

*The information contained herein has been given to us by the owner or sources that we deem reliable. We have no reason to doubt its accuracy, but we do not guarantee it. Prospective tenants should carefully verify all information contained herein.*



↑ BACK TO AVAILABLE SPACE



**CONNOR GILCHRIST**  
425.274.4286  
[gilchrist@broderickgroup.com](mailto:gilchrist@broderickgroup.com)

**RAWLEY HOLMBERG**  
425.274.4284  
[holmberg@broderickgroup.com](mailto:holmberg@broderickgroup.com)

**SAMSON TORO**  
425.274.4289  
[toro@broderickgroup.com](mailto:toro@broderickgroup.com)

OWNED AND MANAGED BY:



# PAINE FIELD

## BUSINESS PARK

2615 WEST CASINO ROAD  
EVERETT, WASHINGTON 98204

### SUITE 5A

AVAILABLE NOW

TOTAL SF: 1,961 RSF

OFFICE SF: 581 RSF

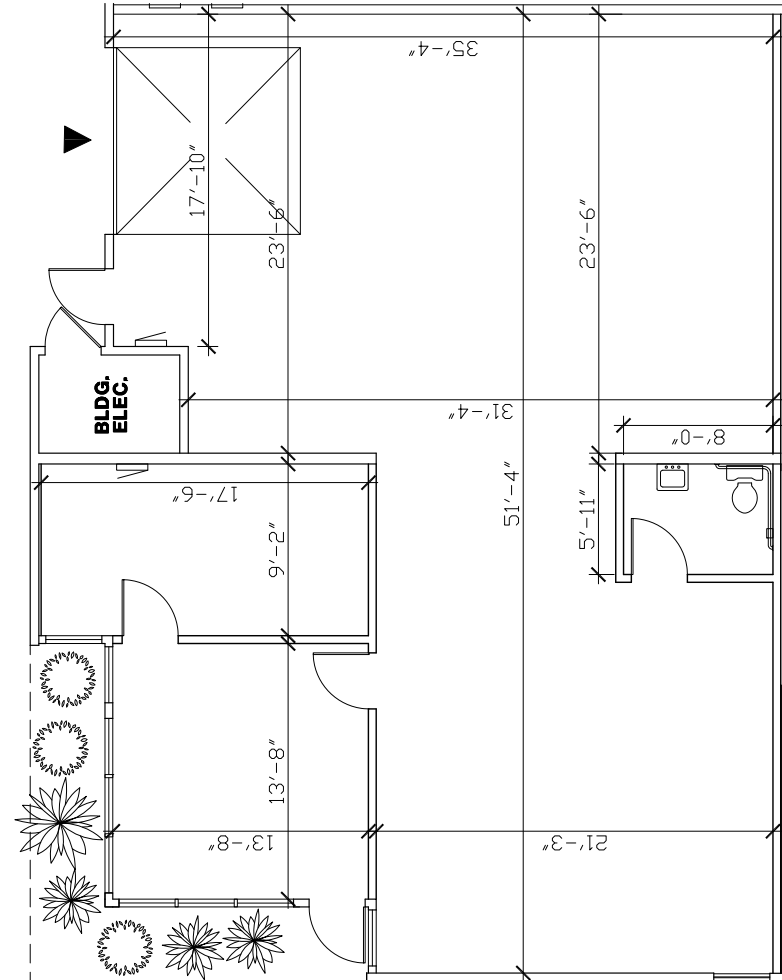
WAREHOUSE SF: 1,380 RSF

BASE RENT: \$2,745

NNN: \$726

GROSS RENT: \$3,471

*The information contained herein has been given to us by the owner or sources that we deem reliable. We have no reason to doubt its accuracy, but we do not guarantee it. Prospective tenants should carefully verify all information contained herein.*



[↑ BACK TO AVAILABLE SPACE](#)



**CONNOR GILCHRIST**  
425.274.4286  
[gilchrist@broderickgroup.com](mailto:gilchrist@broderickgroup.com)

**RAWLEY HOLMBERG**  
425.274.4284  
[holmberg@broderickgroup.com](mailto:holmberg@broderickgroup.com)

**SAMSON TORO**  
425.274.4289  
[toro@broderickgroup.com](mailto:toro@broderickgroup.com)

OWNED AND MANAGED BY:

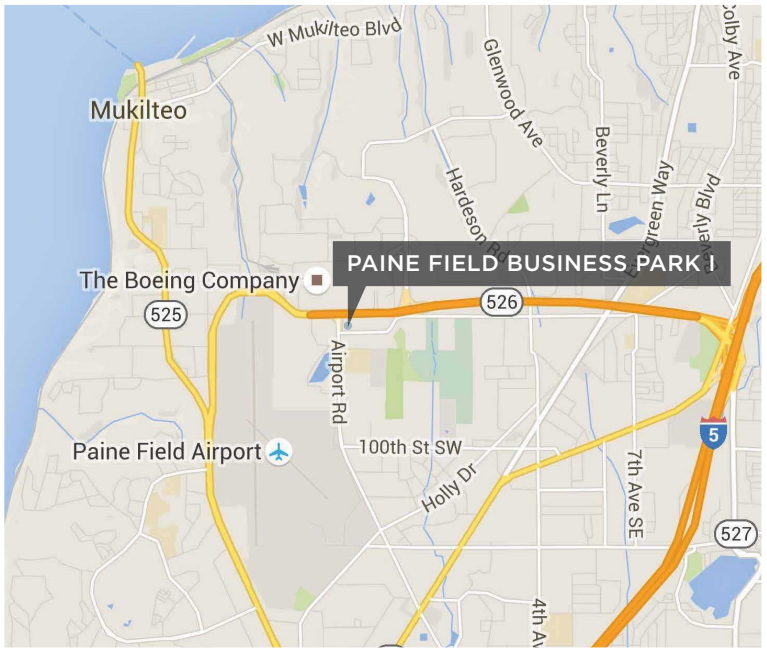




# PAINE FIELD

## BUSINESS PARK

2615 WEST CASINO ROAD  
EVERETT, WASHINGTON 98204



**BRODERICK**  
GROUP

**CONNOR GILCHRIST**  
425.274.4286  
[gilchrist@broderickgroup.com](mailto:gilchrist@broderickgroup.com)

**RAWLEY HOLMBERG**  
425.274.4284  
[holmberg@broderickgroup.com](mailto:holmberg@broderickgroup.com)

**SAMSON TORO**  
425.274.4289  
[toro@broderickgroup.com](mailto:toro@broderickgroup.com)

OWNED AND MANAGED BY:

  
**Schnitzer**  
PROPERTIES

# PAINE FIELD

## BUSINESS PARK

2615 WEST CASINO ROAD  
EVERETT, WASHINGTON 98204

PUGET SOUND

### PAINE FIELD BUSINESS PARK I



- |                              |                             |                         |                                     |                            |                          |
|------------------------------|-----------------------------|-------------------------|-------------------------------------|----------------------------|--------------------------|
| <b>1</b> Happy Tummy Grill   | <b>7</b> IHOP               | <b>13</b> Panera Bread  | <b>19</b> UPS                       | <b>25</b> Michaels         | <b>31</b> Taco Bell      |
| <b>2</b> Goodwill            | <b>8</b> FedEx              | <b>14</b> Starbucks     | <b>20</b> Arby's                    | <b>26</b> Walmart          | <b>32</b> Memo's Mexican |
| <b>3</b> USPS                | <b>9</b> Outback Steakhouse | <b>15</b> Target        | <b>21</b> T.J. Maxx                 | <b>27</b> Everett Mall     | <b>33</b> Popeye's       |
| <b>4</b> Fred Meyer          | <b>10</b> Office Depot      | <b>16</b> V Star Buffet | <b>22</b> Best Buy                  | <b>28</b> LA Fitness       | <b>34</b> Walgreens      |
| <b>5</b> Public Storage      | <b>11</b> BECU              | <b>17</b> Trader Joe's  | <b>23</b> Petco                     | <b>29</b> Wells Fargo Bank | <b>35</b> Albertson's    |
| <b>6</b> Buzz Inn Steakhouse | <b>12</b> McDonald's        | <b>18</b> Applebee's    | <b>24</b> Kyoto Japanese Steakhouse | <b>30</b> Ross             | <b>36</b> Dairy Queen    |

**BRODERICK**  
GROUP

**CONNOR GILCHRIST**  
425.274.4286  
[gilchrist@broderickgroup.com](mailto:gilchrist@broderickgroup.com)

**RAWLEY HOLMBERG**  
425.274.4284  
[holmberg@broderickgroup.com](mailto:holmberg@broderickgroup.com)

**SAMSON TORO**  
425.274.4289  
[toro@broderickgroup.com](mailto:toro@broderickgroup.com)

OWNED AND MANAGED BY:

**Schnitzer**  
PROPERTIES