

FOR LEASE

405 32ND STREET

SUITE 210

BELLINGHAM, WASHINGTON



4,950 SF



\$24/SF/YEAR

NNN

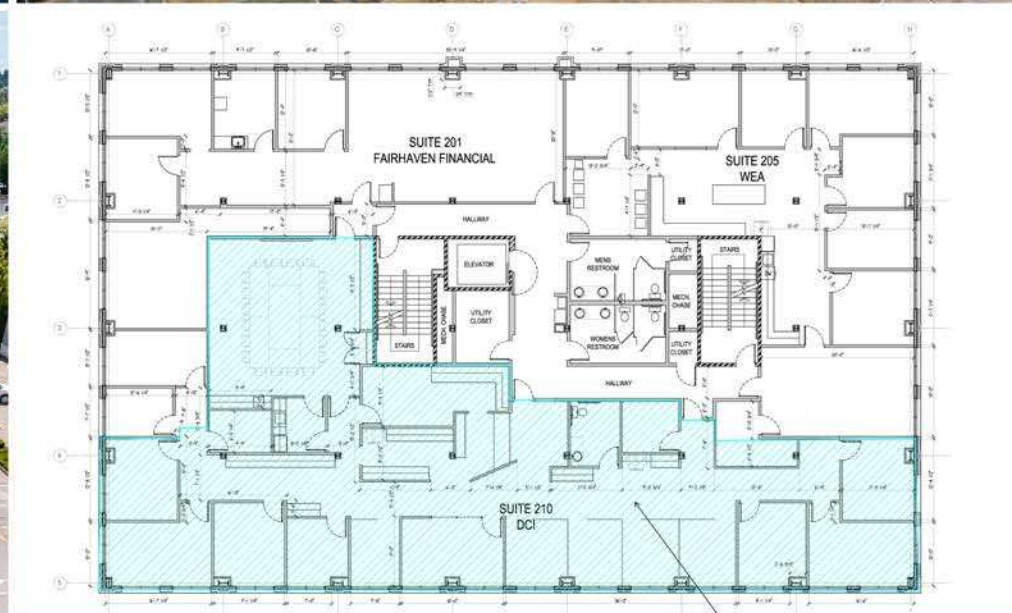
\$8/SF/YEAR



EXCEPTIONAL REGIONAL
CONNECTIVITY

405 32ND STREET SUITE 210

- 4,950 SF
- \$24.00 NNN asking base rent per year
- Current occupant to vacate by the end of 2026
- Operating Expense approx. \$8/SF/year
- Ground floor space off lobby
- Currently built out pr attached floor plan
- Modifications and T.I. contribution negotiable
- Reserved and common area parking available
- Common area restrooms and suite restrooms



JEFF JOHNSON
MIKE KINGSLEY



360.319.8358
360.223-3944



jajohnson@windermere.com
kingsley@windermere.com



RETAILER MAP

