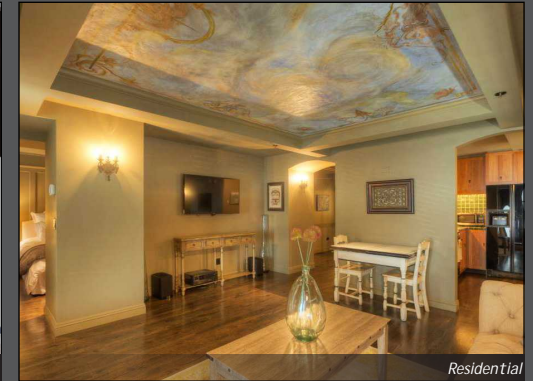


FOR SALE

Banner Building

80 Vine Street, Suite 2600, Seattle WA 98121



PROPERTY FEATURES

- Beautiful corner commercial live/work loft, located in the award-winning Banner Building
- Prized Belltown location, set between Seattle's Sculpture Park and Pike Place Market
- Impeccably finished jewel box 1 br apartment with coffered ceiling, dark oak floors and Carrera marble, sitting above a beautifully appointed retail space on the corner of Western & Vine, with 18' ceilings and floor-to-ceiling windows
- Separate entrances for residential and commercial spaces
- Potential owner/user or income-producing property
 - Commercial space is built out for office or retail
 - The mezzanine unit allows for a range of residential and/or office options
- Both spaces allow for a wide range of uses, and can be combined
- Deeded SUV/truck-sized, "handicap accessible" parking space
- **\$1,090,000 – 2,196 SF**



EWING & CLARK

For more information, please contact:

Tom Graf

206.295.1445

tomgraff@ewingandclark.com

Andy Bethel

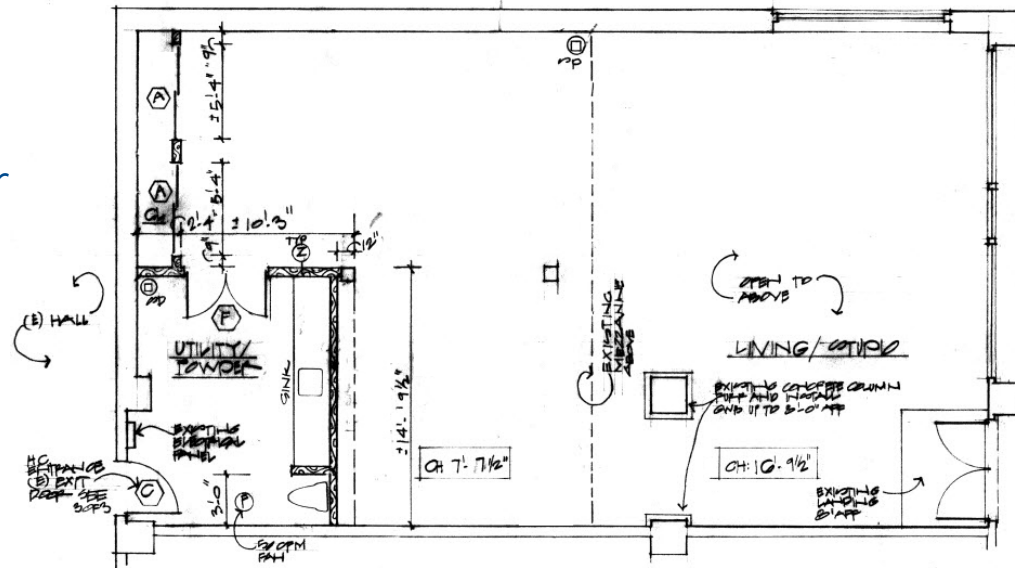
206.838.2855

abethel@ewingandclark.com

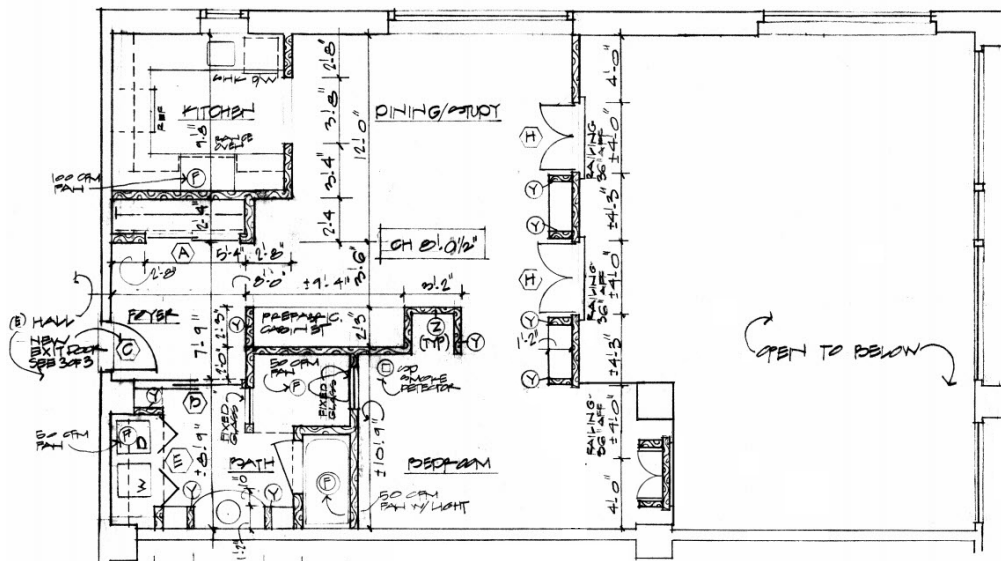
Floor Plans

80 Vine Street, Suite 2600, Seattle WA 98121

Ground Floor



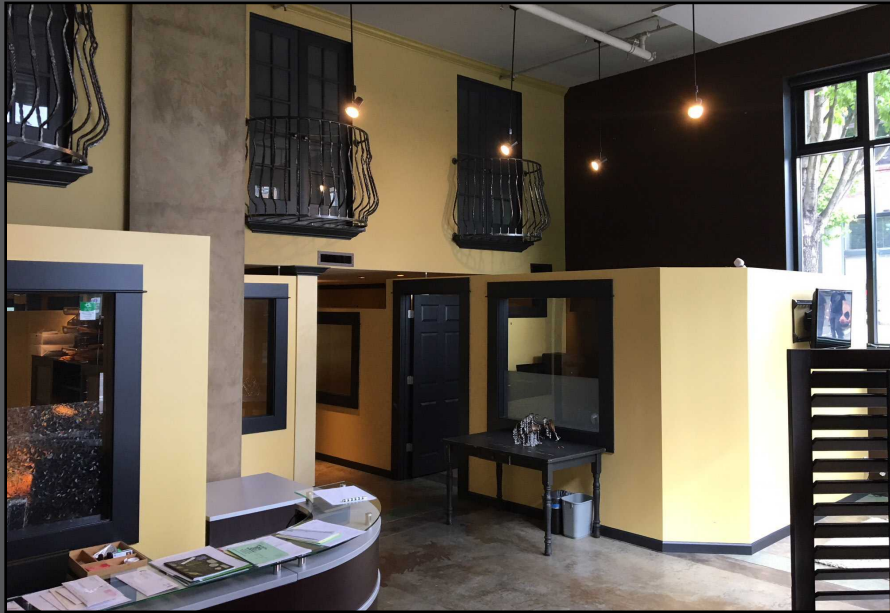
Mezzanine



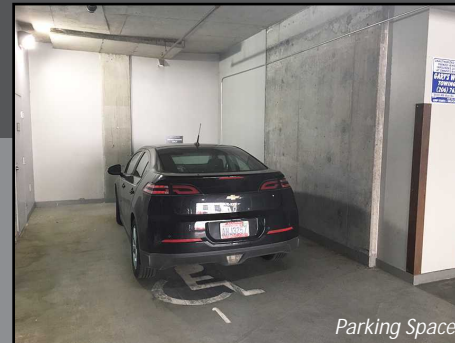
Western Avenue

Additional Photos

80 Vine Street, Suite 2600, Seattle WA 98121



Commercial



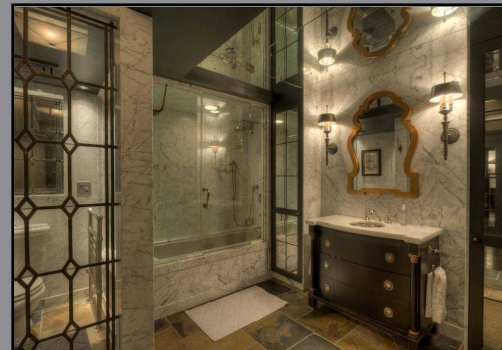
Parking Space



Common Area Patio



Residential



EWING & CLARK

For more information, please contact:

Tom Graf 
206.295.1445
tomgraff@ewingandclark.com

Andy Bethel
206.838.2855
abethel@ewingandclark.com