



CANTERWOOD COUNTRY CLUB

Alburys  
Papa Murphy's TAKE 'N BAKE PIZZA  
SUBWAY  
KeyBank  
Great Clips IT'S GONNA BE GREAT  
verizon wireless  
HomeStreet Bank



COSTCO WHOLESALE  
Walgreens  
BIG 5 SPORTING GOODS  
MOD  
QDOBA MEXICAN EATS  
PitaPit  
Yo! Go's Frozen Yogurt  
at&t  
PANDA EXPRESS  
MATTRESS FIRM

TARGET  
Starbucks  
FAMOUS footwear  
CHASE

CHI Franciscan Health



THE HOME DEPOT  
Office DEPOT  
Pizza Hut  
McDonald's  
MATTRESS FIRM

# FOR SALE

Borgen Blvd & Canterwood Dr  
Gig Harbor, WA 98332



71,000 CPD

BURNHAM DR NW



# GIG HARBOR NORTH LAND

Lisa Tallman | Jamie Firth

First Western Properties—Tacoma Inc. | 253.472.0404  
6402 Tacoma Mall Blvd, Tacoma, WA 98409 | fwp-inc.com

**GIG HARBOR NORTH LAND** is one of few remaining opportunities in the Gig Harbor North area, prominently located in the heart of Gig Harbor North with immediate access to Highway 16, major retailers, St. Anthony's Hospital and more.

**FOR SALE**

**264,845 ± SF**  
(6.08 ACRES)

**\$3,400,000**  
(\$12.85/SF)

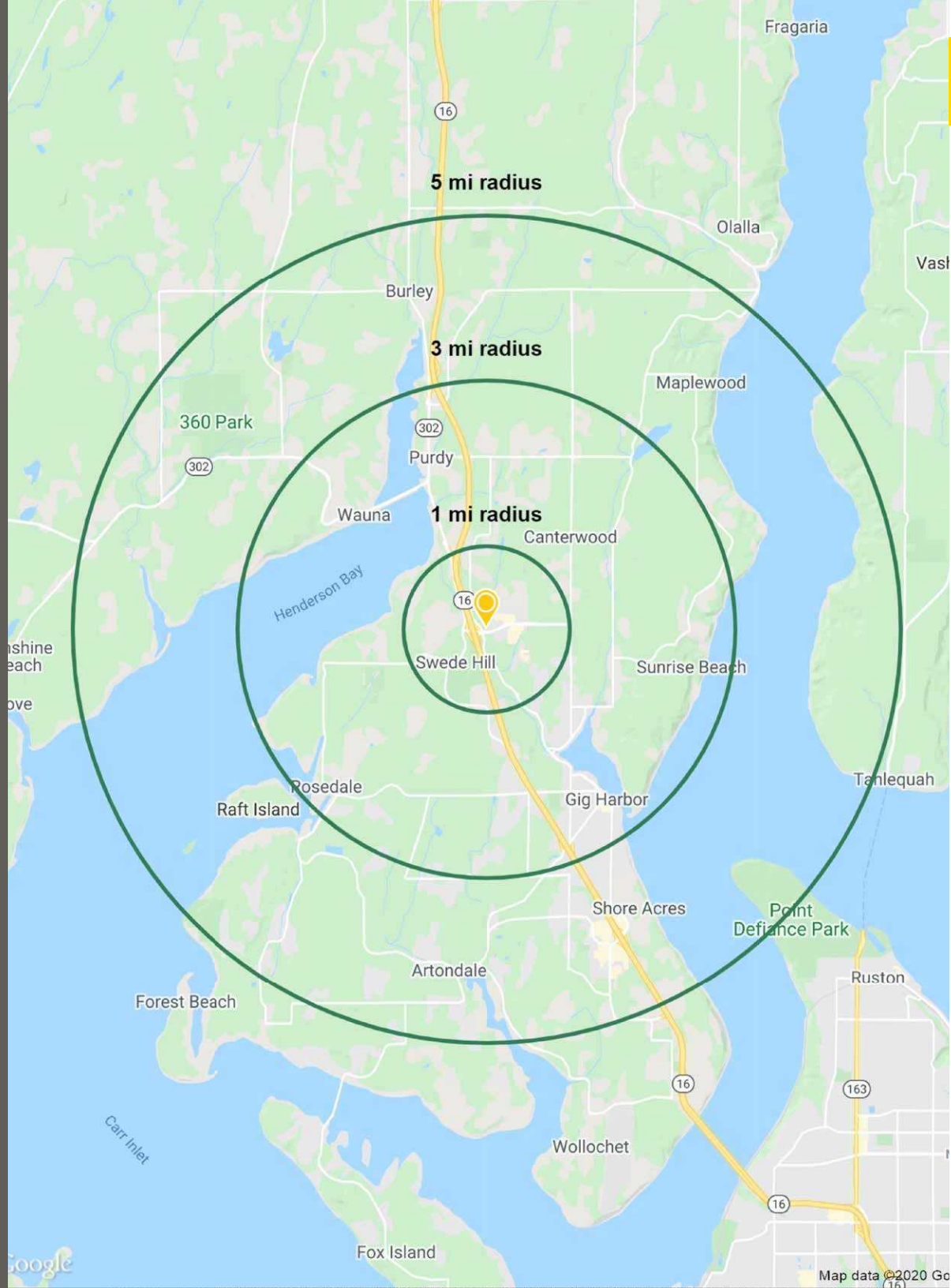
- Immediate access to Highway 16
- Minutes away from the Gig Harbor core as well as surrounding communities in Kitsap County.
- Prominent location and great visibility
- Zoned PCD-BP in the City of Gig Harbor

**NEARBY BUSINESS**



# DEMOGRAPHICS

SUMMARY



## POPULATION

Mile 1	Mile 3	Mile 5
7,228	26,448	50,675

## AVERAGE HH INCOME

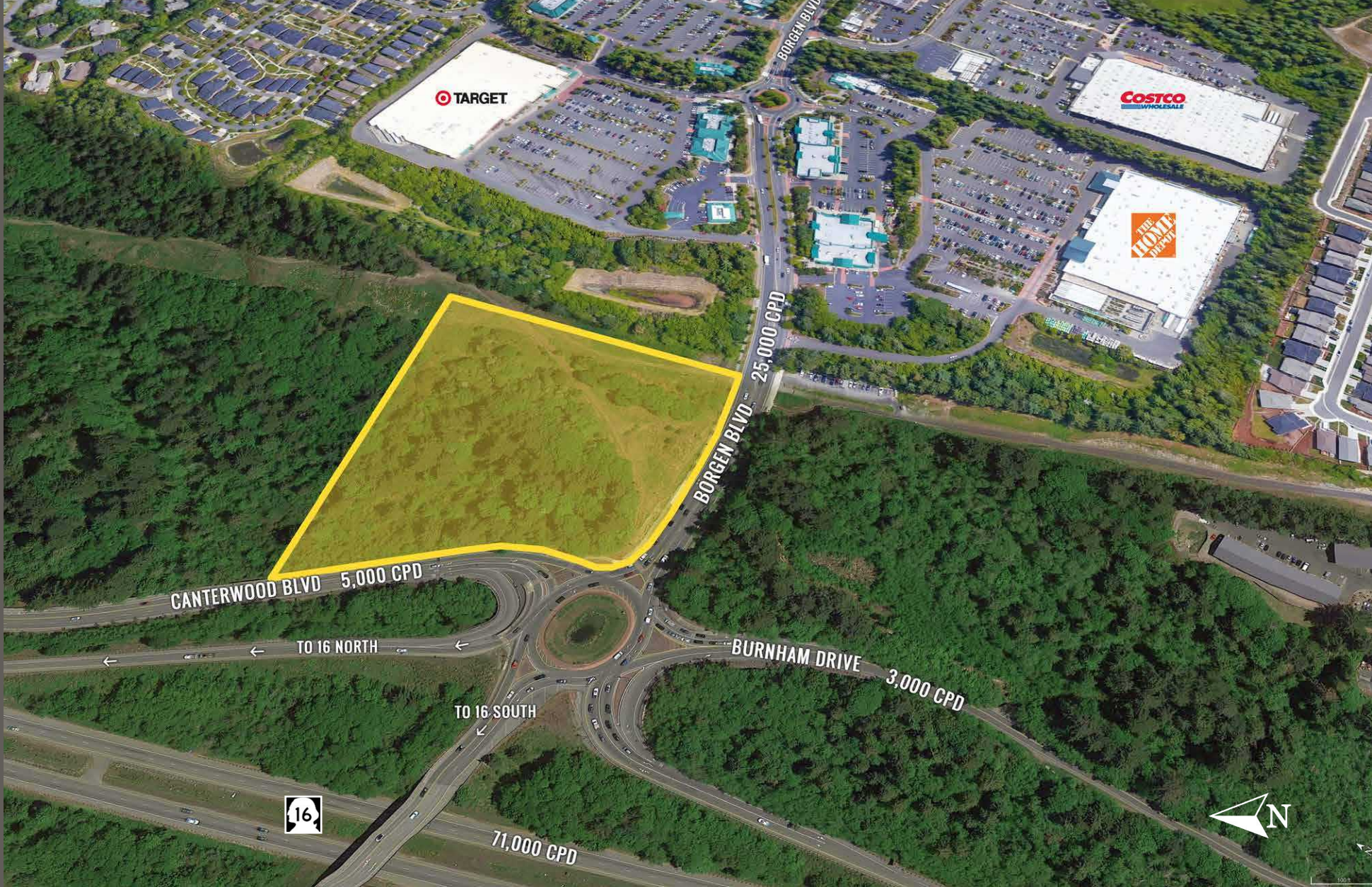
Mile 1	Mile 3	Mile 5
\$183,218	\$149,213	\$137,192

## DAYTIME POPULATION

Mile 1	Mile 3	Mile 5
5,941	20,085	37,472



TRAFFIC AERIAL



Direct access to & from  
Highway 16



Located moments from  
retail & residential areas

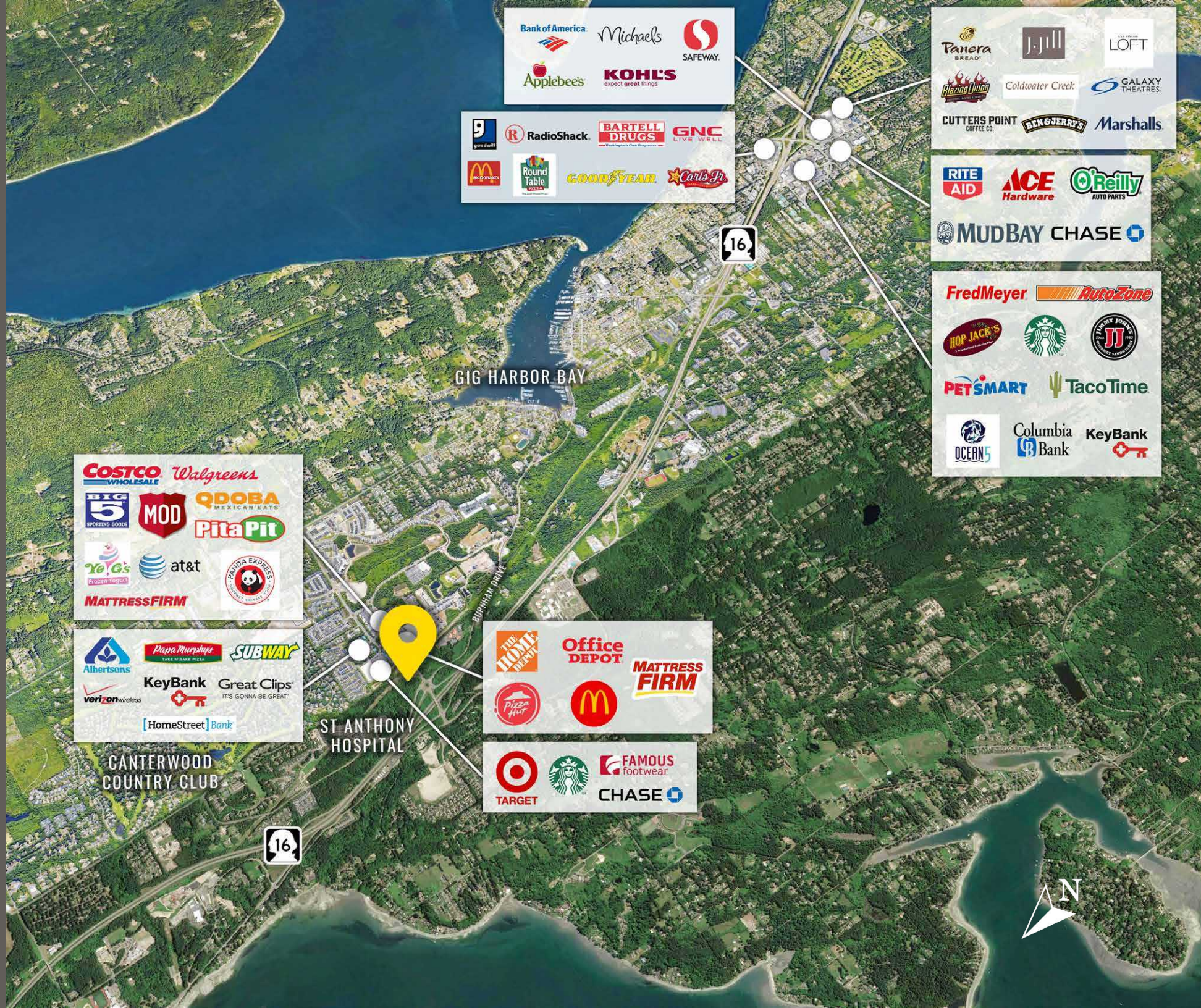


25,000 CPD  
Borgen Blvd



5,000 CPD  
Canterwood Blvd

LOCATION AERIAL



Bank of America | Michaels | SAFeway

Applebee's | KOHL'S | expect great things

9 | RadioShack | BARTHEL DRUGS | GNC | LIVE WELL

McDonald's | Round Table | GOODYEAR | Carls Jr.

Panera BREAD | J.Jill | LOFT

Blazing Union | Coldwater Creek | GALAXY THEATRES

CUTTERS POINT COFFEE CO. | BEN & JERRY'S | Marshalls

RITE AID | ACE Hardware | O'Reilly AUTO PARTS

MUD BAY CHASE

Fred Meyer | AutoZone

HOP JACK'S | Starbucks | J.J. JEWELL'S

PETSMART | TacoTime

OCEAN5 | Columbia Bank | KeyBank

COSTCO WHOLESALE | Walgreens

BIG 5 SPORTING GOODS | MOD | QDOBA MEXICAN EATS | Pita Pit

Yo! Go's FROZEN YOGURT | at&t | PANDA EXPRESS

MATTRESS FIRM

Albertsons | Papa Murphy's | SUBWAY

KeyBank | Great Clips | IT'S GONNA BE GREAT

verizon wireless | HomeStreet Bank

THE HOME DEPOT | Office DEPOT | MATTRESS FIRM

Pizza Hut | McDonald's

TARGET | Starbucks | FAMOUS footwear | CHASE

GIG HARBOR BAY

ST ANTHONY HOSPITAL

CANTERWOOD COUNTRY CLUB



TACOMA | KIRKLAND | SEATTLE | PORTLAND

RELATIONSHIP FOCUSED. RESULTS DRIVEN.

LISA TALLMAN

253.471.5504  
lisa@firstwesternproperties.com

JAMIE FIRTH

253.284.3649  
jamie@firstwesternproperties.com



First Western Properties—Tacoma Inc. | 253.472.0404  
6402 Tacoma Mall Blvd, Tacoma, WA 98409 | fwp-inc.com

© First Western Properties, Inc. DISCLAIMER: The above information has been secured from sources believed to be reliable, however, no representations are made to its accuracy. Prospective tenants or buyers should consult their professional advisors and conduct their own independent investigation. Properties are subject to change in price and/or availability without notice.