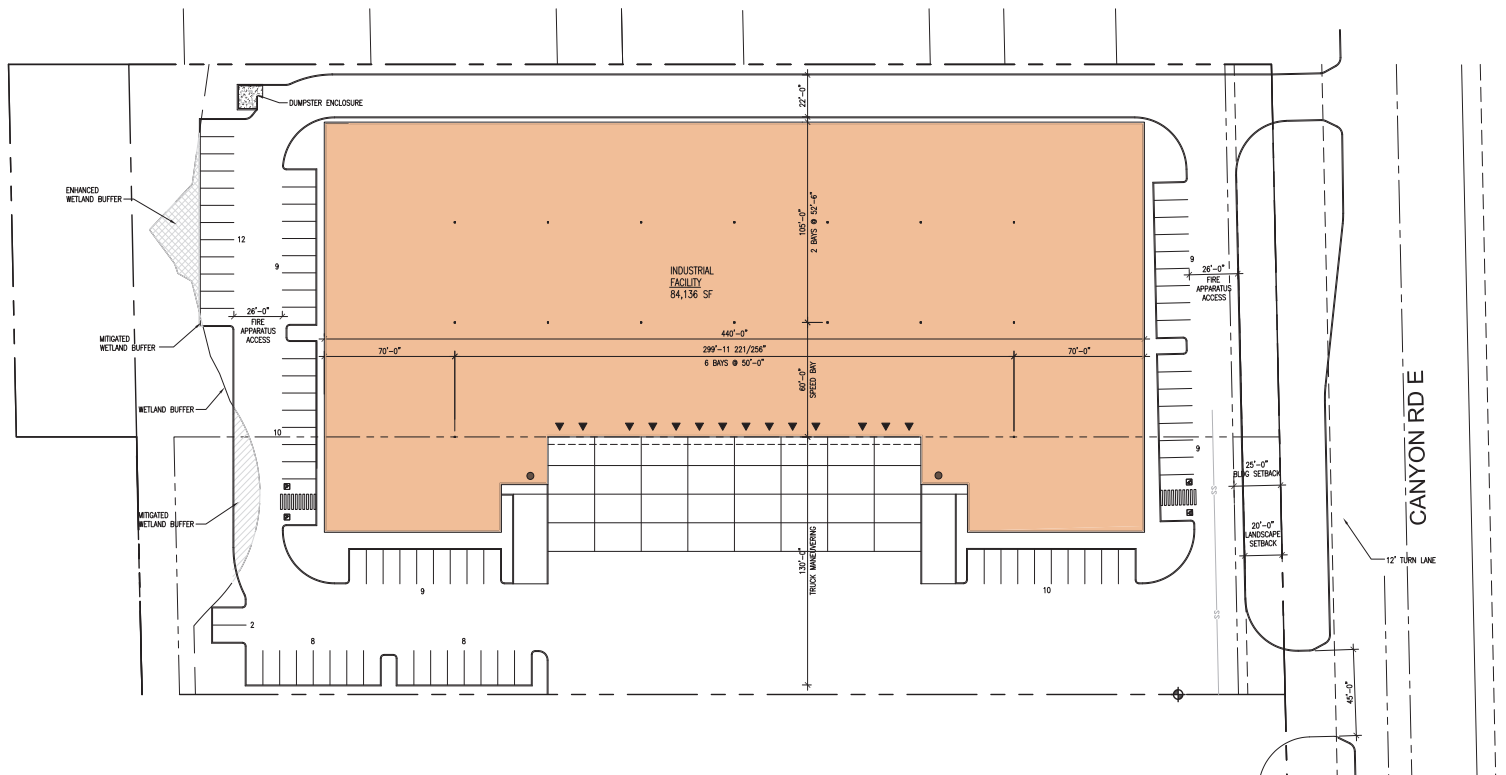


RAINIER LOGISTICS CENTER

13208 & 13224 CANYON ROAD E | PUYALLUP, WA

WAREHOUSE FOR LEASE, BTS, OR YARD SPACE



PROPERTY HIGHLIGHTS

- 4.64 acre site
- Submitted for SEPA for 84,136 SF Building
- BTS options from 10,000 SF to 84,136 SF
- Option for smaller building with yard



NICK RATZKE, SIOR
253.779.2414
nratzke@neilwalter.com

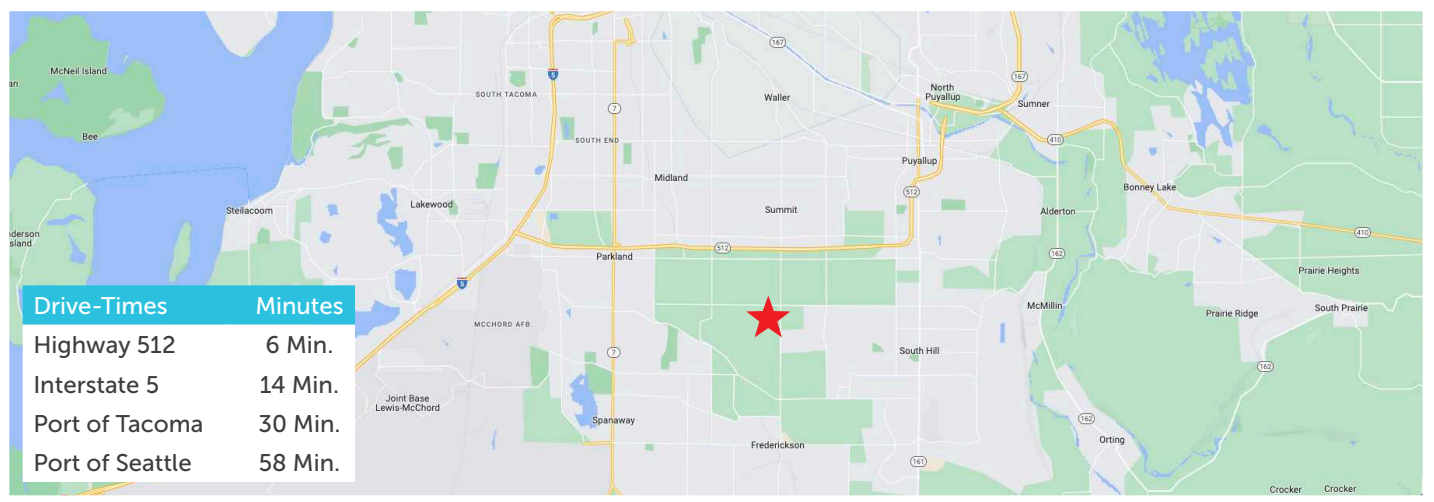
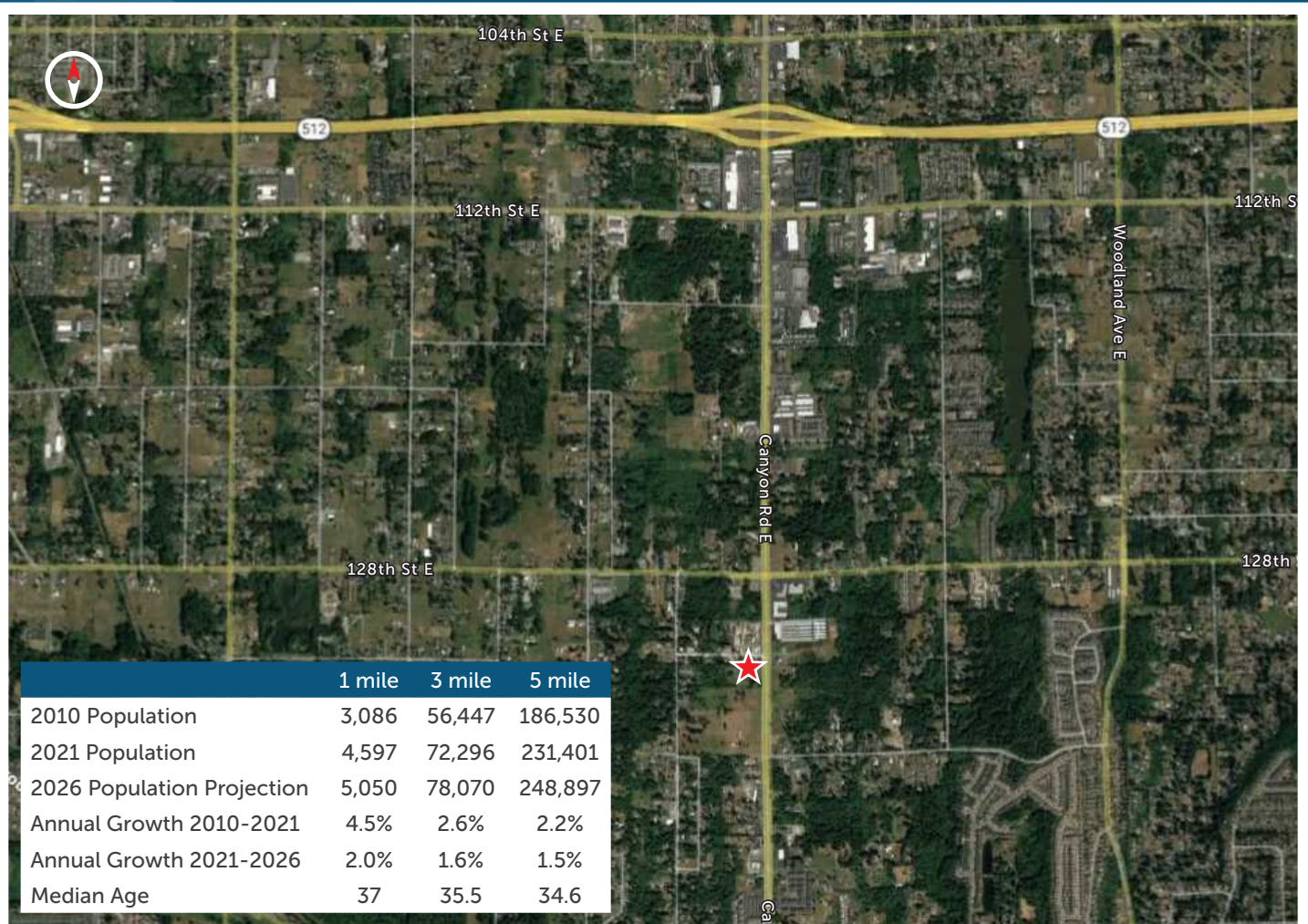
BRUCE VALENTINE
253.779.2400
bvalentine@neilwalter.com

CAMERON VALENTINE
253.779.2427
cvalentine@neilwalter.com

All information references in this document are approximate. The information contained herein is contained from sources deemed reliable. It is provided without representation, warranty, or guarantee, expressed or implied as to accuracy. Prospective buyer or tenant should conduct its own independent investigation relating to the property, government codes and regulations, allowed uses, and all other matters, regardless of whether they are referred to or contained in this document.

RAINIER LOGISTICS CENTER

13208 & 13224 CANYON ROAD E | PUYALLUP, WA



NICK RATZKE, SIOR
253.779.2414
nratzke@neilwalter.com

BRUCE VALENTINE
253.779.2400
bvalentine@neilwalter.com

CAMERON VALENTINE
253.779.2427
cvalentine@neilwalter.com

All information references in this document are approximate. The information contained herein is contained from sources deemed reliable. It is provided without representation, warranty, or guarantee, expressed or implied as to accuracy. Prospective buyer or tenant should conduct its own independent investigation relating to the property, government codes and regulations, allowed uses, and all other matters, regardless of whether they are referred to or contained in this document.

RAINIER LOGISTICS CENTER

13208 & 13224 CANYON ROAD E | PUYALLUP, WA



NICK RATZKE, SIOR
253.779.2414
nratzke@neilwalter.com

BRUCE VALENTINE
253.779.2400
bvalentine@neilwalter.com

CAMERON VALENTINE
253.779.2427
cvalentine@neilwalter.com

All information references in this document are approximate. The information contained herein is contained from sources deemed reliable. It is provided without representation, warranty, or guarantee, expressed or implied as to accuracy. Prospective buyer or tenant should conduct its own independent investigation relating to the property, government codes and regulations, allowed uses, and all other matters, regardless of whether they are referred to or contained in this document.

RAINIER LOGISTICS CENTER

13208 & 13224 CANYON ROAD E | PUYALLUP, WA

PUYALLUP

512

RAINIER LOGISTICS CENTER

Canyon Rd E



NICK RATZKE, SIOR
253.779.2414
nratzke@neilwalter.com

BRUCE VALENTINE
253.779.2400
bvalentine@neilwalter.com

CAMERON VALENTINE
253.779.2427
cvalentine@neilwalter.com

All information references in this document are approximate. The information contained herein is contained from sources deemed reliable. It is provided without representation, warranty, or guarantee, expressed or implied as to accuracy. Prospective buyer or tenant should conduct its own independent investigation relating to the property, government codes and regulations, allowed uses, and all other matters, regardless of whether they are referred to or contained in this document.