

RAIL-SERVED LAND FOR SALE IN CENTRALIA, WA



4005 GALVIN ROAD

25.38 ACRES INDUSTRIAL DEVELOPMENT LAND FOR SALE



VANESSA HERZOG SIOR CCIM

Principal

D 253.444.3020

vherzog@lee-associates.com



COMMERCIAL REAL ESTATE SERVICES

920 Pacific Avenue, Suite 200 | Tacoma, WA 98402 | 253.383.8382

The information provided herein is from sources we deem reliable, however it is provided without any guarantee or representation as to its accuracy. Prospective parties should independently verify all information prior to entering into any agreements.

SITE DETAILS

This 25.38-acre, rectangular development site is part of the Port of Centralia's Industrial Park I, and is adjacent to Union Pacific's extension of the Puget Sound & Pacific Railway in Centralia, Washington.

Fewer than 2 miles from Interstate 5.

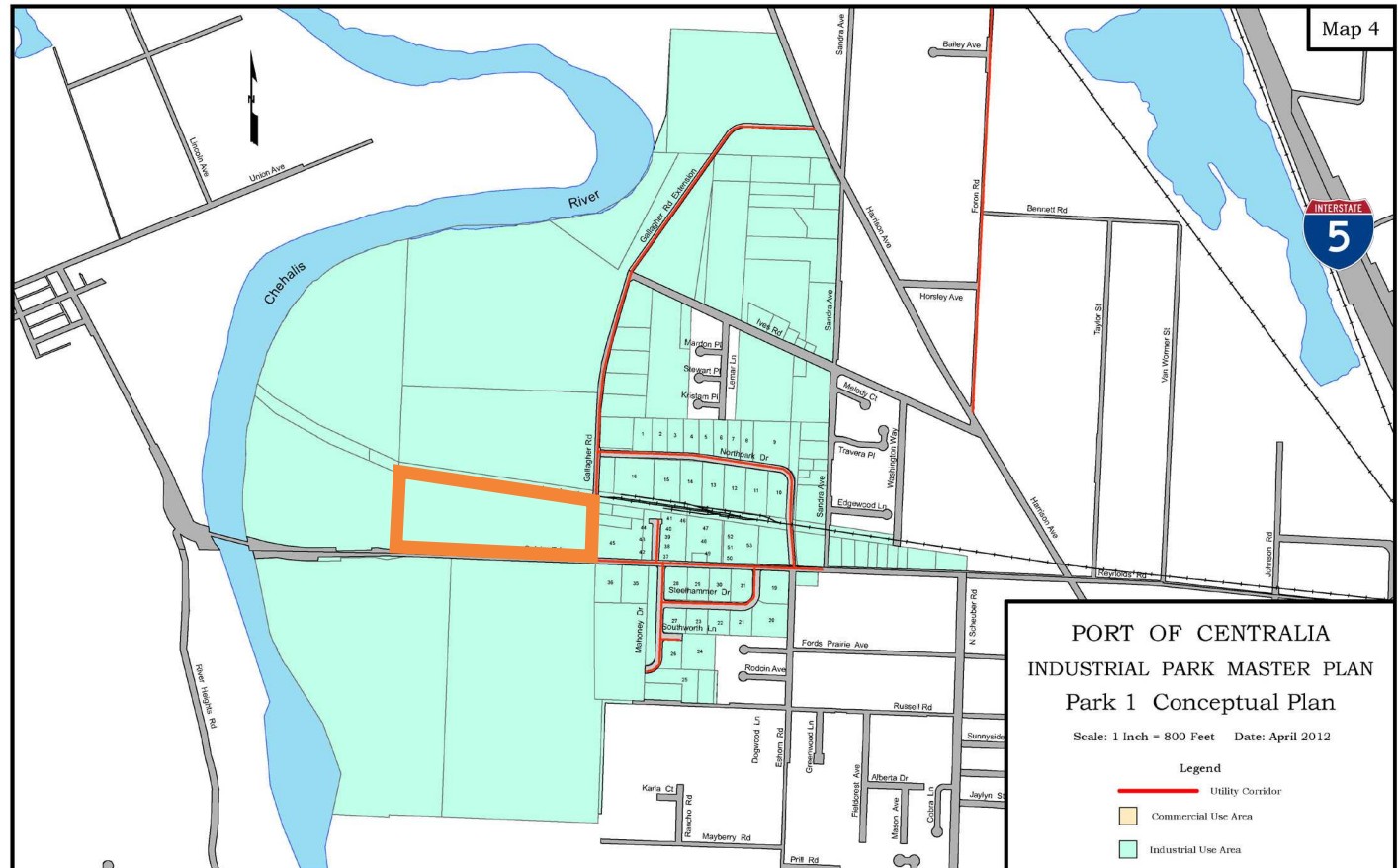


PORT OF CENTRALIA MASTER PLAN

INFRASTRUCTURE FEATURES

- Rail service through Puget Sound & Pacific Railroad.
- 4" natural gas line service.
- 10" water mains with 100 lb PSI.
- 10" sewer mains with 6" stubs for each lot.
- Electricity capabilities to meet nearly any demand.
- Foreign Trade Zone designation.

WATCH NOW 



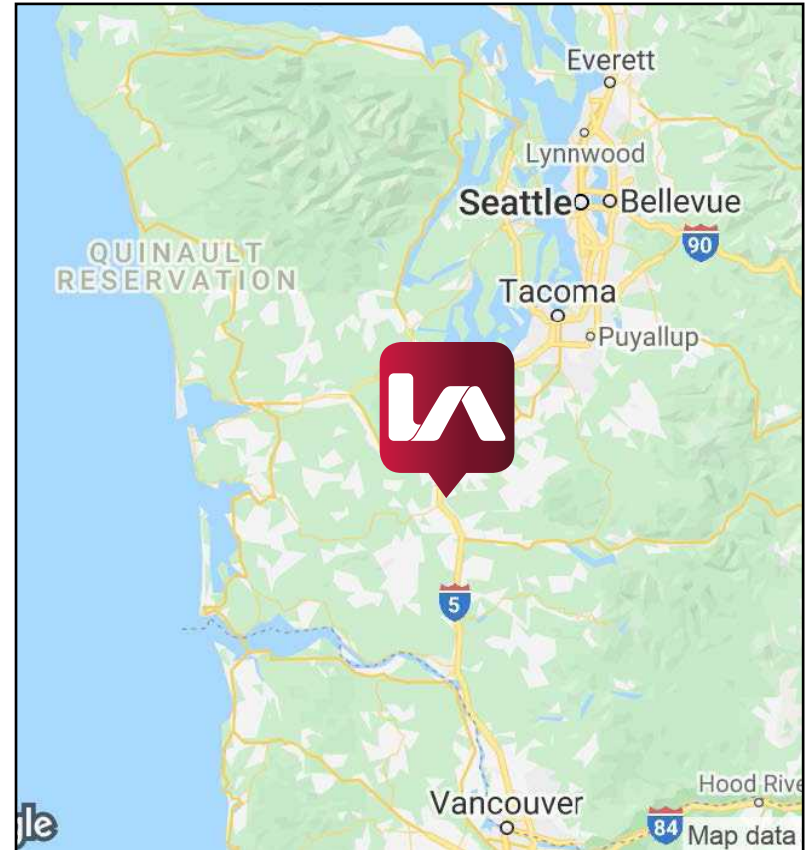
▶ ABOUT CENTRALIA

Located on Interstate 5, the West Coast's major trade corridor, Centralia is well-positioned between Portland and Seattle and is a strategic business "hub." Centralia is the largest city in Lewis County with just under 17,000 residents. Its close proximity to Seattle and Portland and their international airports, as well as the deep water Port of Grays Harbor, make it easy to move goods in and out of the community.

The Port of Centralia, a major contributor to the Centralia economy, has worked with many companies to locate in Centralia a few include: Rogers Machinery Company, Inc., Dick's Brewing Company, Scot Industries, Michael's Distribution Center, Lineage Logistics, Lowe's Distribution Center, Sierra Pacific Industries, and Mega Arms.

Companies have chosen to locate in Centralia for many reasons including our quality of life, location on the I-5 corridor, a lower cost of doing business, and workforce development programs.

MAJOR EMPLOYERS



PRESENTED BY

VANESSA HERZOG SIOR, CCIM

vherzog@lee-associates.com

D 253.444.3020



COMMERCIAL REAL ESTATE SERVICES

950 Pacific Avenue, Suite 200
Tacoma, WA 98402 | 253-383-8382 | lee-nw.com

