

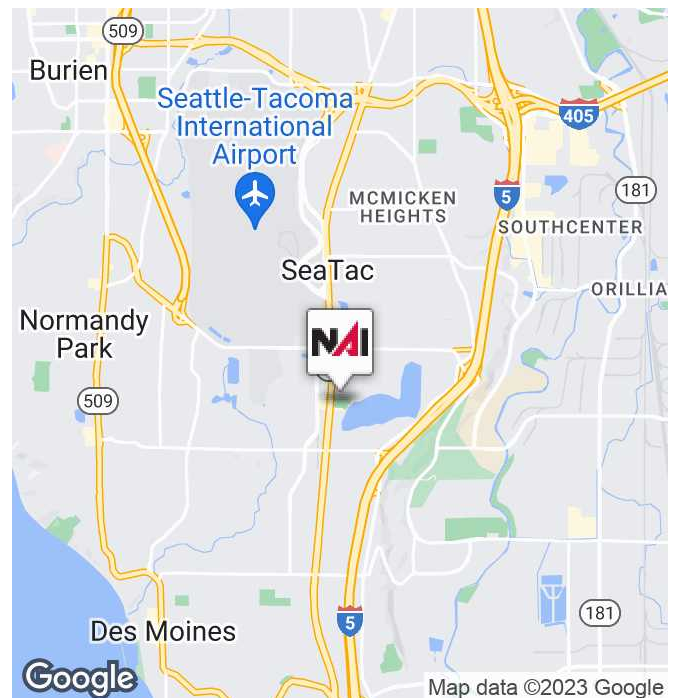


## Angle Lake Waterfront Apartments

19518 International Blvd  
Seatac, Washington 98188

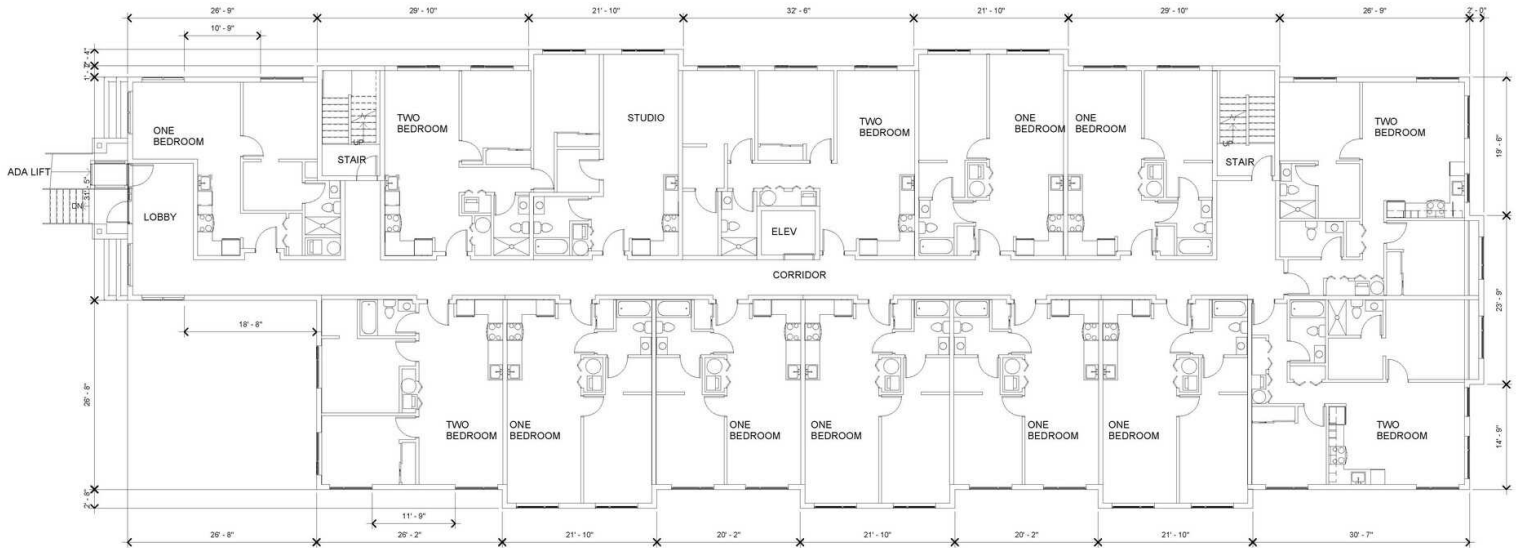
### Property Highlights

- 43,144 SF
- Adjacent to Angle Lake Park
- Only a 5-minute drive from Sea-Tac International Airport, one of the fastest-growing airports in the US
- Waterfront location with unobstructed views of Mt. Rainier
- **Multifamily Development:** 58 Units
- **Sale Price:** \$2,550,000

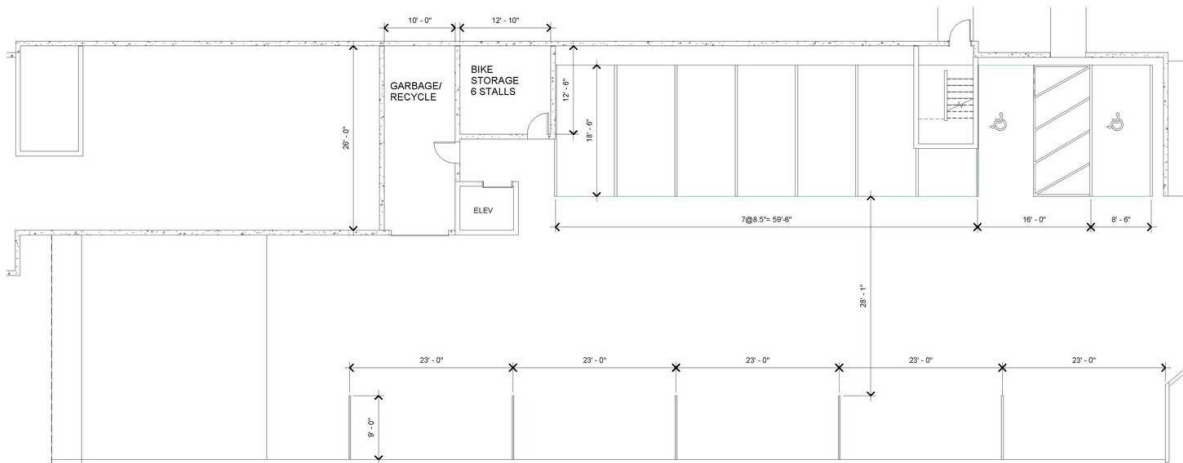


#### Itzik Mizrahi

Partner | 425.586.5637  
imizrahi@nai-psp.com



LEVEL 1  
1/8" = 1'-0"

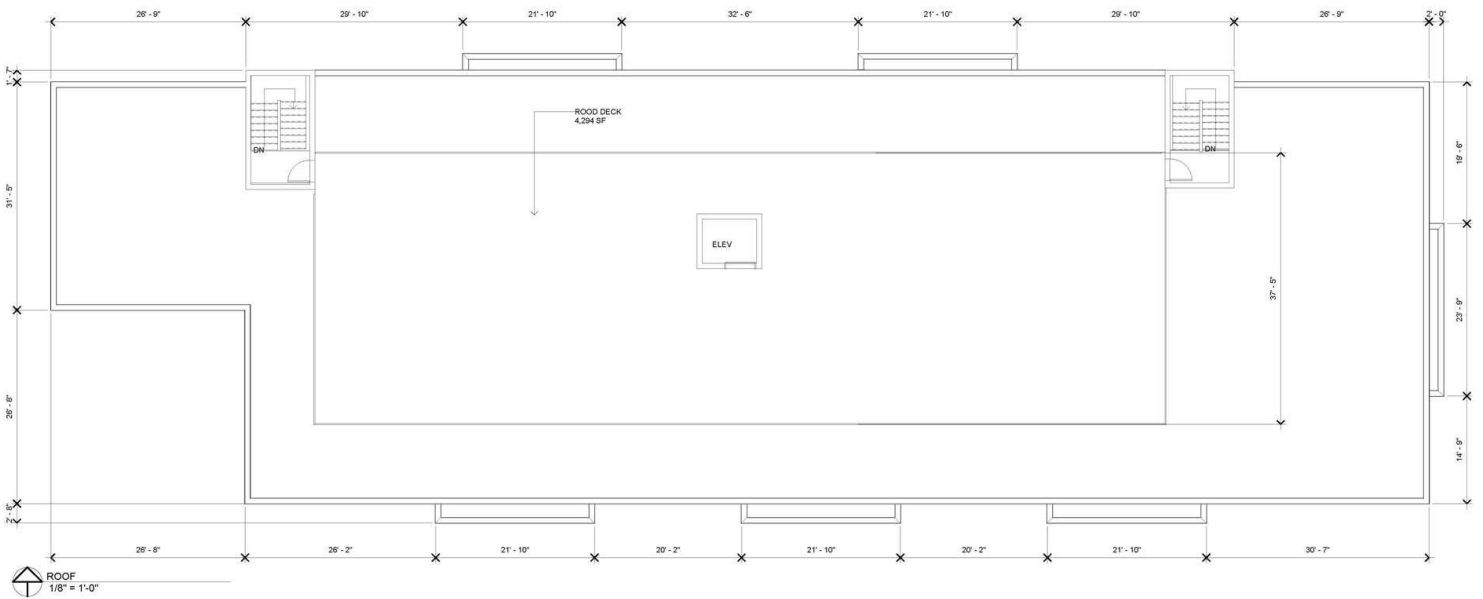
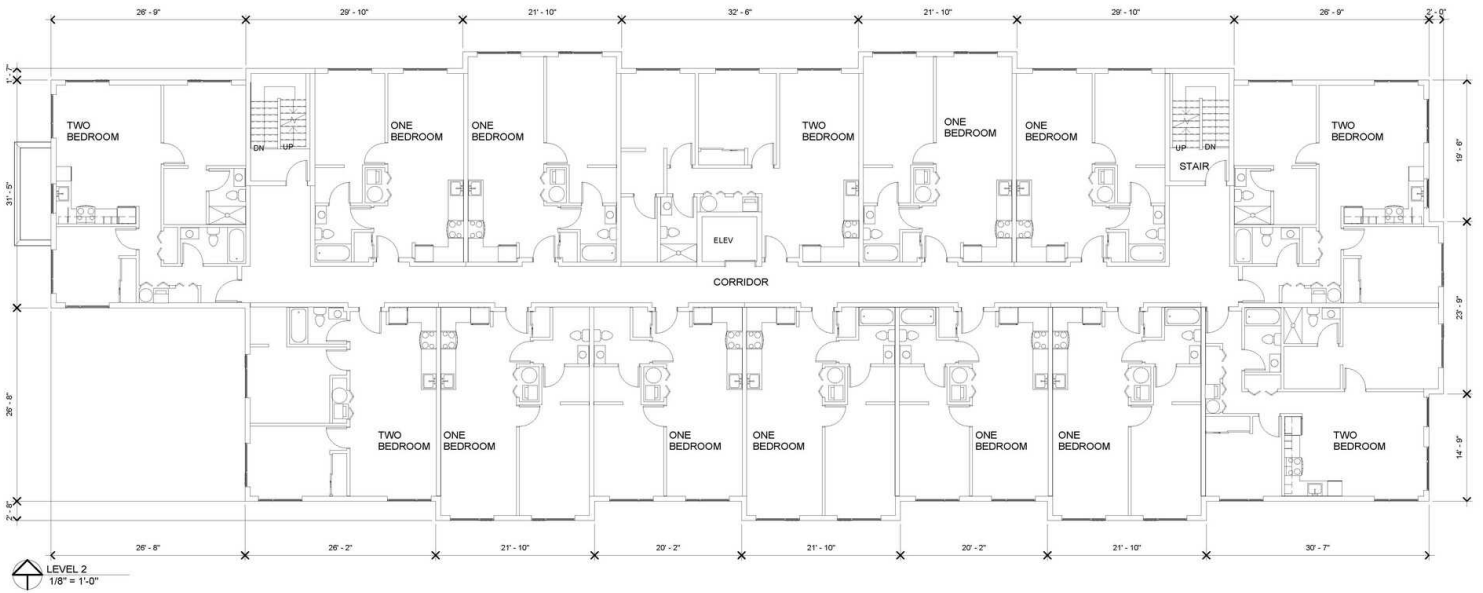


PARKING  
1/8" = 1'-0"

Level 1 (Typical Floor Plan) & Garage

**Itzik Mizrahi**  
Partner | 425.586.5637  
imizrahi@nai-psp.com





**Level 2 & Roof**

**Itzik Mizrahi**  
Partner | 425.586.5637  
imizrahi@nai-psp.com





FOR SALE



MULTIFAMILY



43,144 SF



**Itzik Mizrahi**  
Partner | 425.586.5637  
imizrahi@nai-psp.com



<https://www.nai-psp.com>

THE INFORMATION SUPPLIED HEREIN IS FROM SOURCES WE DEEM RELIABLE. IT IS PROVIDED WITHOUT ANY REPRESENTATION, WARRANTY OR GUARANTEE, EXPRESSED OR IMPLIED, AS TO ITS ACCURACY. PROSPECTIVE BUYER OR TENANT SHOULD CONDUCT AN INDEPENDENT INVESTIGATION AND VERIFICATION OF ALL MATTERS DEEMED TO BE MATERIAL, INCLUDING, BUT NOT LIMITED TO, STATEMENTS OF INCOME AND EXPENSES. CONSULT YOUR ATTORNEY, ACCOUNTANT OR OTHER PROFESSIONAL ADVISOR.