



FOR SALE

# Stoneway Electric Supply Wenatchee Facility

3020 GS CENTER RD #206, WENATCHEE, WA 98801



**DAVE SPEERS**

206.296.9626

dave.speers@kidder.com

**Kidder  
Mathews**

This information supplied herein is from sources we deem reliable. It is provided without any representation, warranty, or guarantee, expressed or implied as to its accuracy. Prospective Buyer or Tenant should conduct an independent investigation and verification of all matters deemed to be material, including, but not limited to, statements of income and expenses. Consult your attorney, accountant, or other professional advisor.

**KIDDER.COM**

**FOR SALE**

# Stoneway Electric Supply Wenatchee Facility

3020 GS CENTER RD #206, WENATCHEE, WA 98801



**DOWNTOWN  
WENATCHEE**

**STONEWAY ELECTRIC SUPPLY  
WENATCHEE FACILITY**

**\$2,000,000** sales price

**10,000** building square feet

**24,995** land square feet

**APPROXIMATELY 2,000** square feet of counter and office space

**APPROXIMATELY 7,000** square feet of warehouse area

**APPROXIMATELY 1,000** mezz storage

**ENTIRE FLOOR AREA** is heated concrete

**COVERED** loading area

**APPROXIMATELY 8,500** square feet of secured storage yard area

**DAVE SPEERS**

206.296.9626

[dave.speers@kidder.com](mailto:dave.speers@kidder.com)

**KIDDER.COM**

This information supplied herein is from sources we deem reliable. It is provided without any representation, warranty, or guarantee, expressed or implied as to its accuracy. Prospective Buyer or Tenant should conduct an independent investigation and verification of all matters deemed to be material, including, but not limited to, statements of income and expenses. Consult your attorney, accountant, or other professional advisor.

**km Kidder Mathews**

FOR SALE

# Stoneway Electric Supply Wenatchee Facility

3020 GS CENTER RD #206, WENATCHEE, WA 98801



**STONWAY ELECTRIC SUPPLY  
WENATCHEE FACILITY**

## Stoneway Electric Lease

Lease Extension Commencement	October 1, 2020
Lease Expiration	September 30, 2025
Current lease rate	\$ .60 / sq. ft. / month \$7.20 / sq. ft. / year \$5,000 / mo - \$60,000 / yr
Modified Net Lease	Tenant pays property taxes and all repairs and maintenance of the subject property. Landlord only pays property insurance - 2022 - \$4,155.00
Option to Extend Lease	Tenant has one option to extend the term of its lease for one 5 year term. The lease rate for the extended lease period is "fair market value of the Premises". We believe the current rent for Stoneway is well below current market rent for a quality facility such as the subject.

Stoneway Electric Supply occupies the entire property and has since the building was constructed in 1994 Stoneway is a subsidiary of Crescent Electric Supply

KIDDER.COM

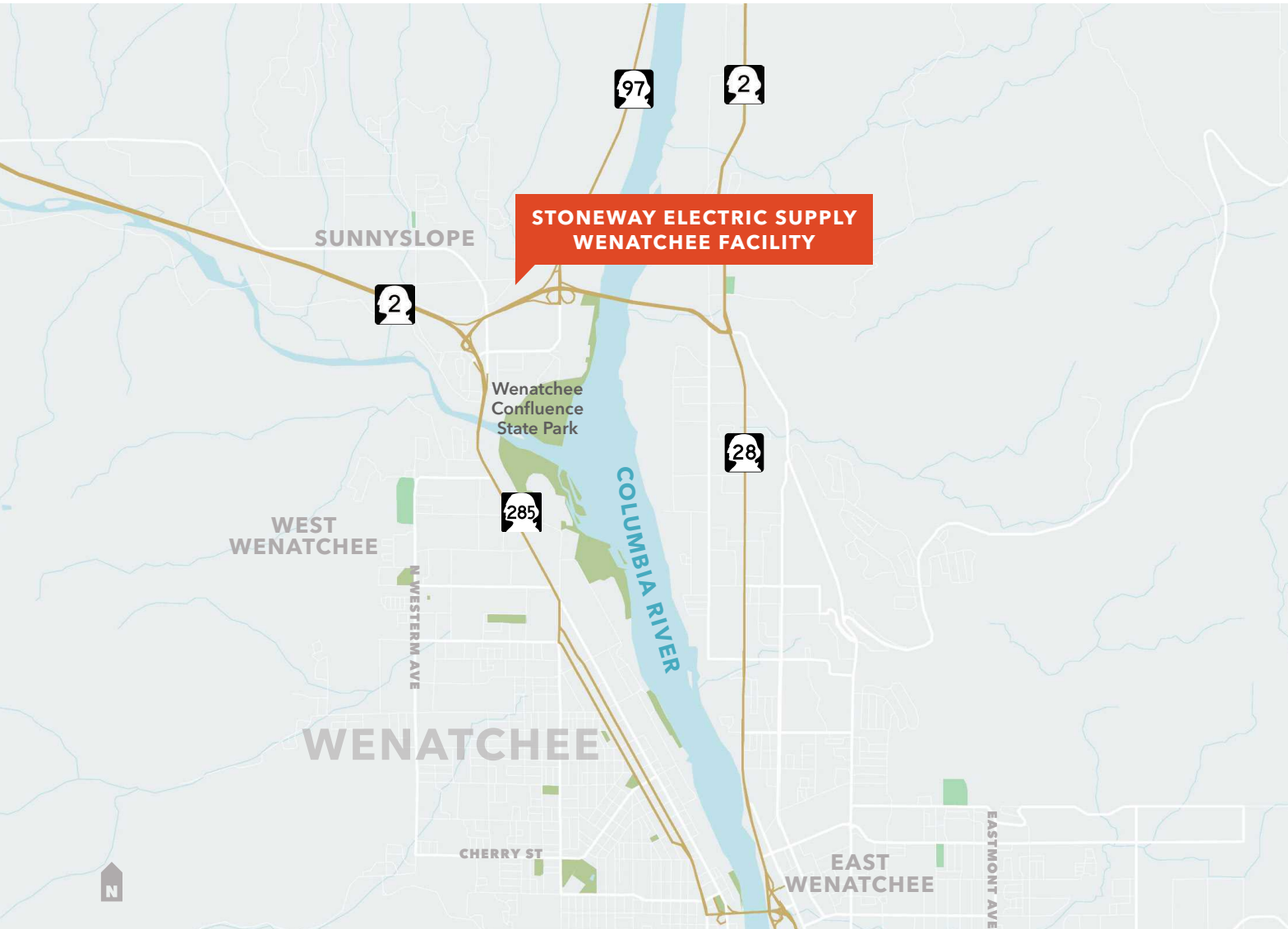
This information supplied herein is from sources we deem reliable. It is provided without any representation, warranty, or guarantee, expressed or implied as to its accuracy. Prospective Buyer or Tenant should conduct an independent investigation and verification of all matters deemed to be material, including, but not limited to, statements of income and expenses. Consult your attorney, accountant, or other professional advisor.

**km** Kidder Mathews

**FOR SALE**

# Stoneway Electric Supply Wenatchee Facility

3020 GS CENTER RD #206, WENATCHEE, WA 98801



## Located in Wenatchee just off Highway 2

Wenatchee is the urban center of 70,000 people in a region that has traditionally been dependent on agriculture and government sectors as the mainstay of the economy. This combination has provided Wenatchee with a stable economic environment over the years. Over the last decade the economy has diversified significantly including the latest addition of the Diamond Foundry. Today, the area's largest employers reflect the region's agricultural heritage, but also other strengths including hydroelectric power, health care, technology, and tourism industries.

**DAVE SPEERS**

206.296.9626

[dave.speers@kidder.com](mailto:dave.speers@kidder.com)

**KIDDER.COM**

This information supplied herein is from sources we deem reliable. It is provided without any representation, warranty, or guarantee, expressed or implied as to its accuracy. Prospective Buyer or Tenant should conduct an independent investigation and verification of all matters deemed to be material, including, but not limited to, statements of income and expenses. Consult your attorney, accountant, or other professional advisor.



**FOR SALE**

# Stoneway Electric Supply Wenatchee Facility

3020 GS CENTER RD #206, WENATCHEE, WA 98801



**STONEWAY ELECTRIC SUPPLY  
WENATCHEE FACILITY**

**KIDDER.COM**

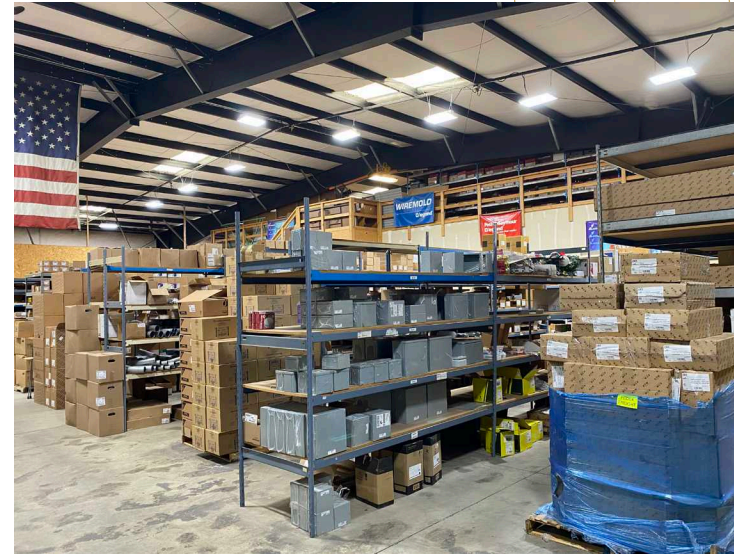
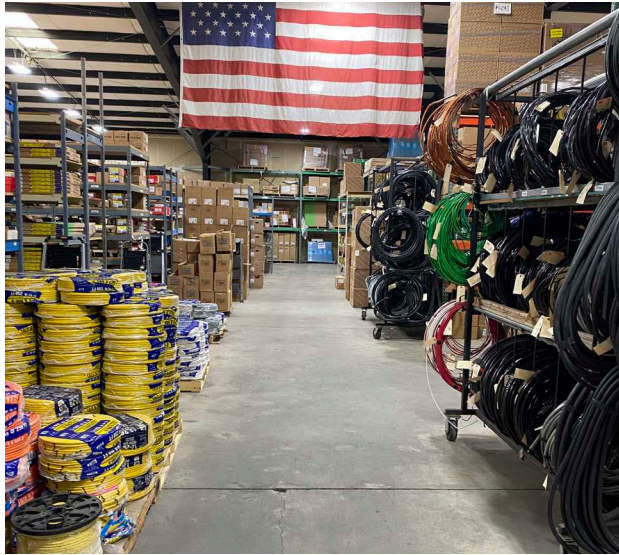
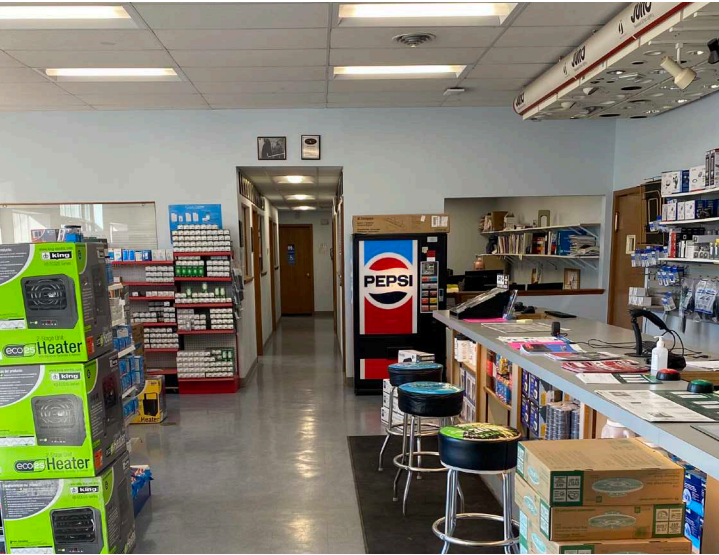
This information supplied herein is from sources we deem reliable. It is provided without any representation, warranty, or guarantee, expressed or implied as to its accuracy. Prospective Buyer or Tenant should conduct an independent investigation and verification of all matters deemed to be material, including, but not limited to, statements of income and expenses. Consult your attorney, accountant, or other professional advisor.

**km** Kidder  
Mathews

FOR SALE

# Stoneway Electric Supply Wenatchee Facility

3020 GS CENTER RD #206, WENATCHEE, WA 98801



KIDDER.COM

This information supplied herein is from sources we deem reliable. It is provided without any representation, warranty, or guarantee, expressed or implied as to its accuracy. Prospective Buyer or Tenant should conduct an independent investigation and verification of all matters deemed to be material, including, but not limited to, statements of income and expenses. Consult your attorney, accountant, or other professional advisor.

**km** Kidder Mathews

DAVE SPEERS  
206.296.9626  
dave.speers@kidder.com

**FOR SALE**

# Stoneway Electric Supply Wenatchee Facility

3020 GS CENTER RD #206, WENATCHEE, WA 98801

## Wenatchee's business and community assets serve the region

**HEALTH CARE** Home to Central Washington Hospital, Wenatchee Valley Medical Center, Columbia Valley Community Health.

**EDUCATION** Including Wenatchee Valley College, Central Washington University (on WVC Campus), Confluence Technology Center, North Central Technical Skills Center.

**AGRICULTURE** Wenatchee's history as the Apple Capital of the World has defined the region's agricultural infrastructure – which is state-of-the-art for fruit production, storage and packing, fruit shippers and marketers, and value-added processes. The newly flourishing wine industry is represented by Wenatchee Wine Country. Wenatchee is quickly becoming a food/wine destination.

**ARTS** The Stanley Civic Center, which includes the Performing Arts Center of Wenatchee and the Wenatchee Convention Center, The Greater Wenatchee Regional Events Center/Town Toyota Center, Riverside Playhouse, Sun Basin Theaters, Art on the Avenues, and Wenatchee Symphony.

**TECHNOLOGY** Confluence Technology Center is home to a Yahoo! data center as well as numerous small-to-medium technology firms that flourish in the area where our fiber infrastructure is renowned.

**RECREATION** From the Apple Capital Recreational Loop Trail to the Wenatchee Foothills Trails, and Mission Ridge – one can understand why Wenatchee was rated as one of National Geographic magazine's Top 50 Adventure Towns.



The Pybus Public Market is the new prize of the community providing an amazing gathering place for locals and visitors to enjoy the fruits of our region. Located on the Apple Capital Loop Trail and beautiful riverfront park in downtown, this venue is an anchor to growth in the city.

**KIDDER.COM**

This information supplied herein is from sources we deem reliable. It is provided without any representation, warranty, or guarantee, expressed or implied as to its accuracy. Prospective Buyer or Tenant should conduct an independent investigation and verification of all matters deemed to be material, including, but not limited to, statements of income and expenses. Consult your attorney, accountant, or other professional advisor.

**km** Kidder Mathews

**FOR SALE**

# Stoneway Electric Supply Wenatchee Facility

3020 GS CENTER RD #206, WENATCHEE, WA 98801



KIDDER.COM

This information supplied herein is from sources we deem reliable. It is provided without any representation, warranty, or guarantee, expressed or implied as to its accuracy. Prospective Buyer or Tenant should conduct an independent investigation and verification of all matters deemed to be material, including, but not limited to, statements of income and expenses. Consult your attorney, accountant, or other professional advisor.

**km** Kidder Mathews

## CONTACT

### DAVE SPEERS

Executive Vice President, Shareholder

**T** 206.296.9626

**C** 206.920.2201

[dave.speers@kidder.com](mailto:dave.speers@kidder.com)



**Kidder  
Mathews**

[KIDDER.COM](http://KIDDER.COM)