



4606 BRIDGEPORT WAY W | SUITE C

Single Tenant Medical Investment Opportunity

FOR SALE

4606 Bridgeport Way W, Suite C

4606 BRIDGEPORT WAY W | SUITE C | UNIVERSITY PLACE, WA

SINGLE TENANT MEDICAL INVESTMENT OPPORTUNITY

Tenant	Physical Therapy Building Assoc LLC
Building	Total: 2,214 SF First: 1,674 SF Second: 546 SF
Land	11,392 SF
Year Built	1988/2017 remodel
Zoning	NC, Neighborhood Commercial
Occupancy	100% leased
Monthly Rent	\$3,655 / \$19.81 PSF/Yr
Lease Start Date	January 1, 2015
Lease Exp. Date	December 31, 2026 with two, five year options at market, but not less than previous rate plus 3%
Landlord Responsibility Insurance	\$450 per year
Parking	27 stalls
Parcel Number	2651500030
Purchase Price	\$690,000
Cap Rate	6.5%
Touring	Please do not disturb tenant

Neighboring Condo is currently on the market for sale and can be acquired.

DEMOGRAPHICS

2020	1 Mile	3 Miles	5 Miles
Population	16,752	95,847	251,504
Median HH Income	\$84,076	\$70,758	\$71,791



\$42,343

NET OPERATING INCOME

6.01%

CAP RATE

\$690,000

ASKING PRICE

\$318.00

NRA \$/SF

BEN NORBE

253.722.1410

ben.norbe@kidder.com

KIDDER.COM

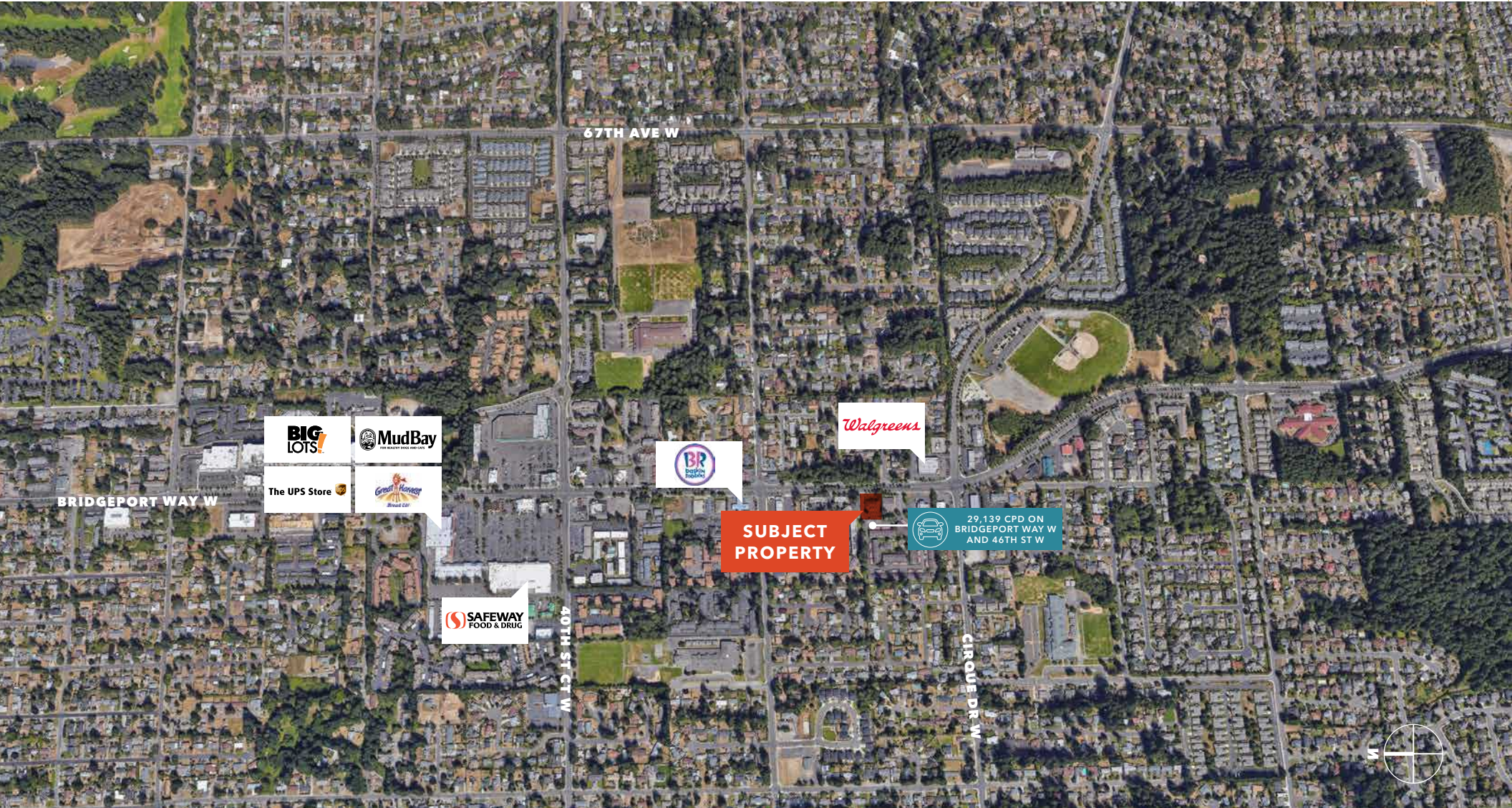
This information supplied herein is from sources we deem reliable. It is provided without any representation, warranty, or guarantee, expressed or implied as to its accuracy. Prospective Buyer or Tenant should conduct an independent investigation and verification of all matters deemed to be material, including, but not limited to, statements of income and expenses. Consult your attorney, accountant, or other professional advisor.



FOR SALE

4606 Bridgeport Way W, Suite C

4606 BRIDGEPORT WAY W | SUITE C | UNIVERSITY PLACE, WA



KIDDER.COM

This information supplied herein is from sources we deem reliable. It is provided without any representation, warranty, or guarantee, expressed or implied as to its accuracy. Prospective Buyer or Tenant should conduct an independent investigation and verification of all matters deemed to be material, including, but not limited to, statements of income and expenses. Consult your attorney, accountant, or other professional advisor.

km Kidder Mathews