

921 LAKEWAY DRIVE



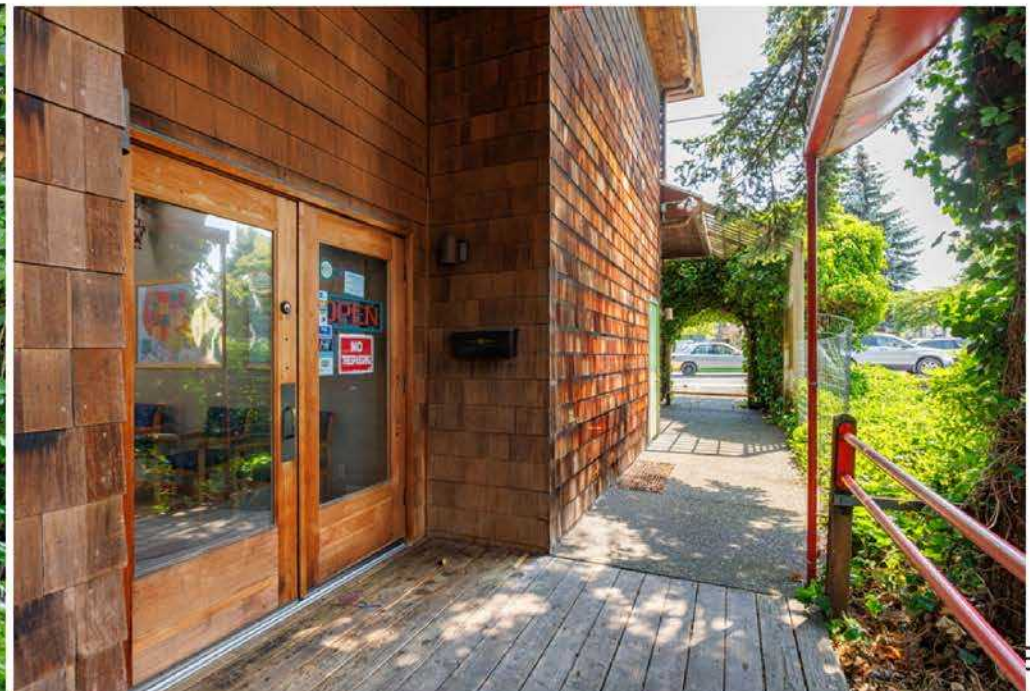
JEFF JOHNSON
WINDERMERE COMMERCIAL
360.319.8358
JAJOHNSON@WINDERMERE.COM

ELIZABETH WOLFE
WINDERMERE COMMERCIAL
360.319.6923
ELIZABETH.WOLFE@WINDERMERE.COM

921 LAKEWAY DRIVE

IDEAL corner location at one of Bellingham's most heavily trafficked intersections, averaging over 26,000 cars per day. 3,102 SQFT building (1,768 SQFT main floor + upstairs office, 1,334 SQFT basement), currently built out as a restaurant with 14 designated parking spaces. This high-visibility property is zoned planned commercial with possibility for multi-family use. Many opportunities for this iconic location, situated a quarter mile to I-5 on/off ramps, half a mile east of downtown Bellingham, half a mile west of city sports centers, and across the street from Fred Meyer.

LOT SIZE	8,276 SQFT
BUILDING SQFT	3,102 SQFT
CURRENT BUILD OUT	RESTAURANT
PARCEL #	3803320435270000
AREA	PUGET NEIGHBORHOOD
PARKING SPACES	14
ZONING	PLANNED COMMERCIAL
YEAR BUILT	1984
ASKING PRICE	\$1,500,000



AREA MAP



LOT ORIENTATION

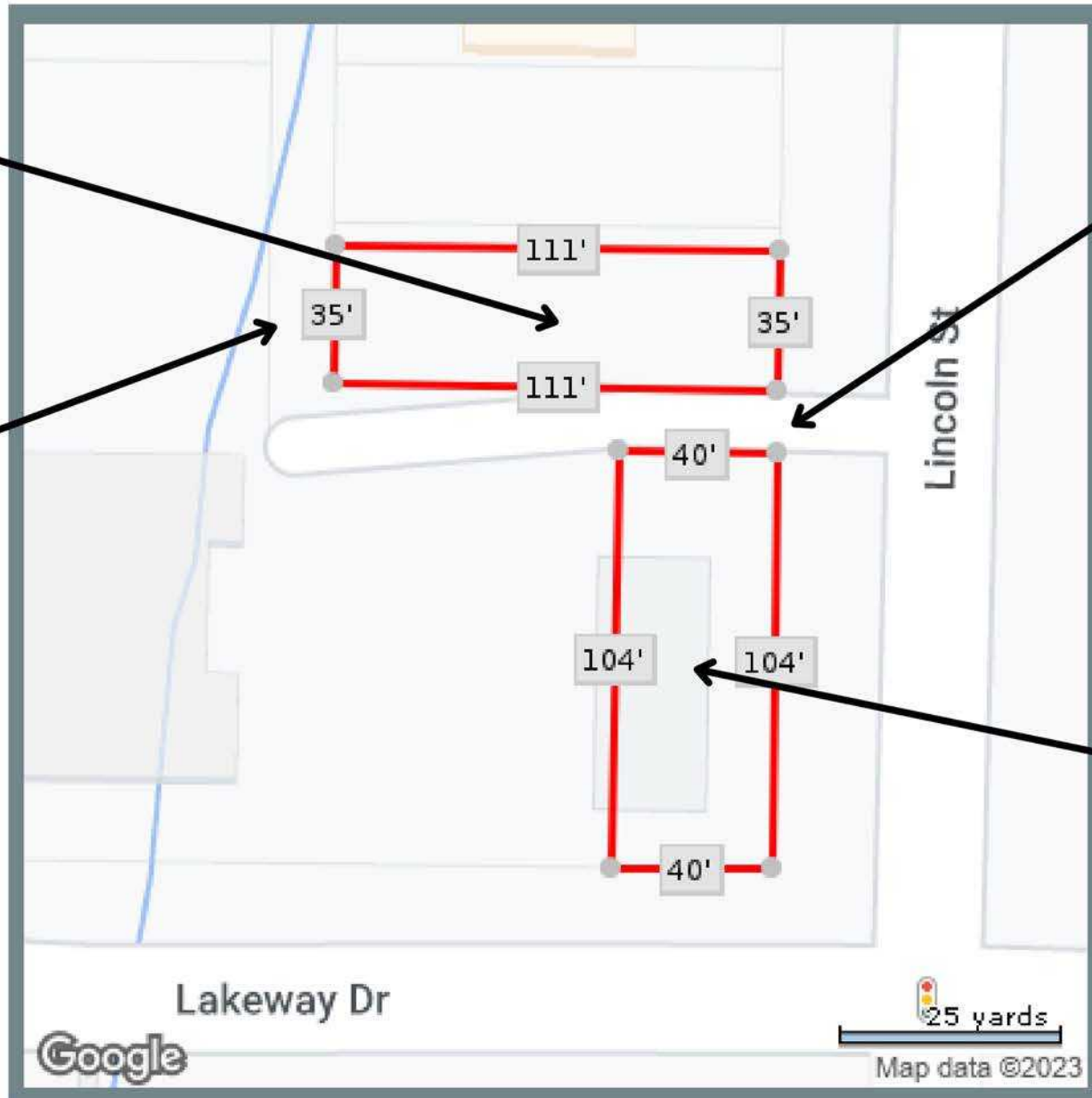
TOTAL: 8,276 SQFT

11 PARKING SPACES

ACCESS EASEMENT

ACCESS EASEMENT (ALLEYWAY)

CURRENT RESTAURANT + 3 PARKING SPACES



AREA DEMOGRAPHICS

Location Facts & Demographics

Demographics are determined by a 10 minute drive from 819 Lakeway Drive, Bellingham, WA 98229

CITY, STATE
Bellingham, WA

POPULATION
89,984

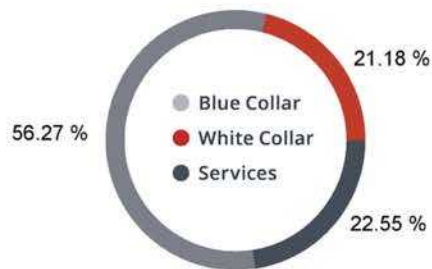
AVG. HHSIZE
2.26

MEDIAN HH INCOME
\$47,526

HOME OWNERSHIP

Renters: **19,864**
Owners: **17,973**

EMPLOYMENT

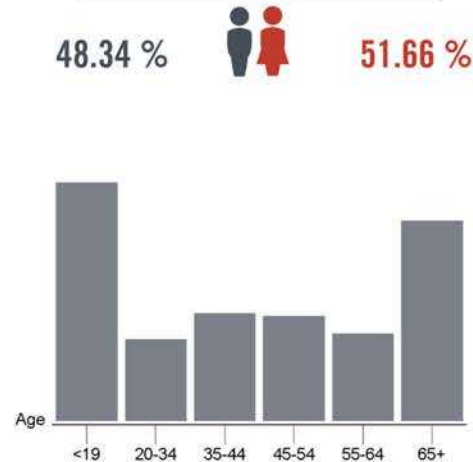


50.33 % Employed
2.40 % Unemployed

EDUCATION

High School Grad: **22.87 %**
Some College: **24.30 %**
Associates: **9.81 %**
Bachelors: **35.99 %**

GENDER & AGE

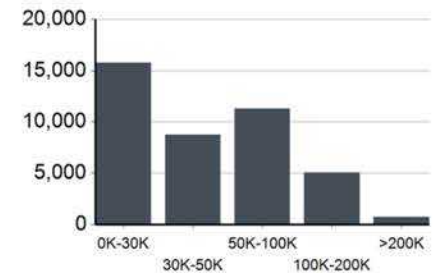


RACE & ETHNICITY

White: **80.15 %**
Asian: **3.77 %**
Native American: **0.58 %**
Pacific Islanders: **0.02 %**
African-American: **0.98 %**
Hispanic: **7.57 %**
Two or More Races: **6.91 %**



INCOME BY HOUSEHOLD



HH SPENDING



This information supplied herein is from sources we deem reliable. It is provided without any representation, warranty or guarantee, expressed or implied as to its accuracy. Prospective Buyer or Tenant should conduct an independent investigation and verification of all matters deemed to be material, including, but not limited to, statements of income and expenses. Consult your attorney, accountant, or other professional advisor.

PHOTOS





PRESENTED BY



JEFF JOHNSON
WINDERMERE COMMERCIAL
360.319.8358
JJOHNSON@WINDERMERE.COM



ELIZABETH WOLFE
WINDERMERE COMMERCIAL
360.319.6923
ELIZABETH.WOLFE@WINDERMERE.COM