



FOR SALE
21616 7th Pl S,
Des Moines, WA 98198

ONE CLICK MAP 



DES MOINES LAND REDEVELOPMENT

Elijah Piper | Tim Weber

First Western Properties—Tacoma Inc. | 253.472.0404
6402 Tacoma Mall Blvd, Tacoma, WA 98409 | fwp-inc.com

FOR SALE:

NORTH LOT: 9,069 SF \$400,000

SOUTH LOT: 25,080 SF \$2,000,000

TOTAL: 34,149 SF \$2,400,000

- Adjacent to high density multi-family developments
- Pad available next to Puddle Jumpers Childcare and across the street from Dollar Tree
- Moments from Des Moines Marina
- Minutes off I-5

Regis - 2023



Population



Average HH Income

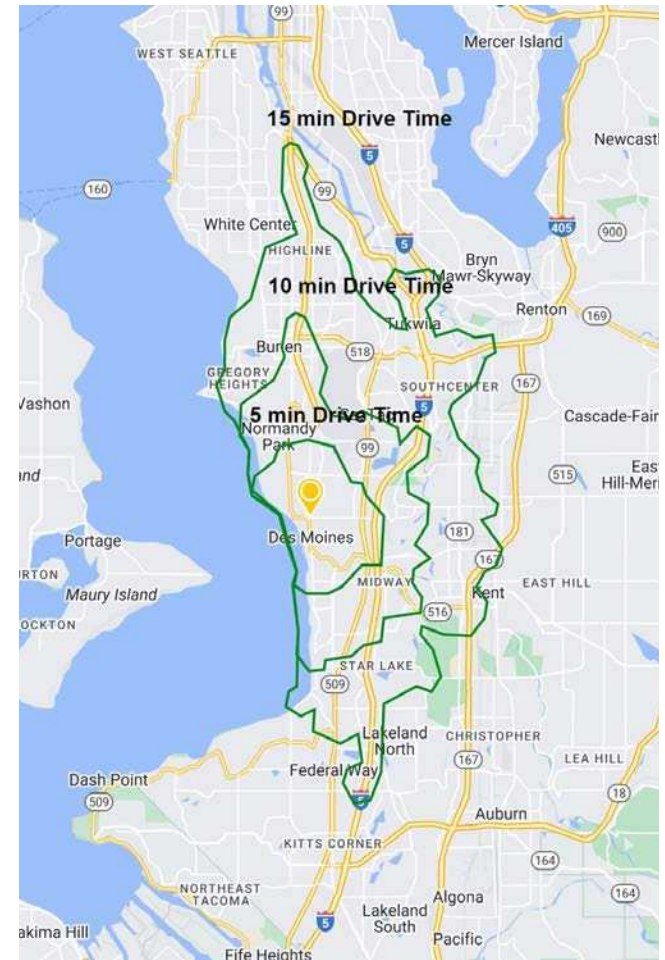


Daytime Population

5 Minutes 29,087 \$96,456 17,438

10 Minutes 73,488 \$103,443 55,019

15 Minutes 191,336 \$97,493 159,827



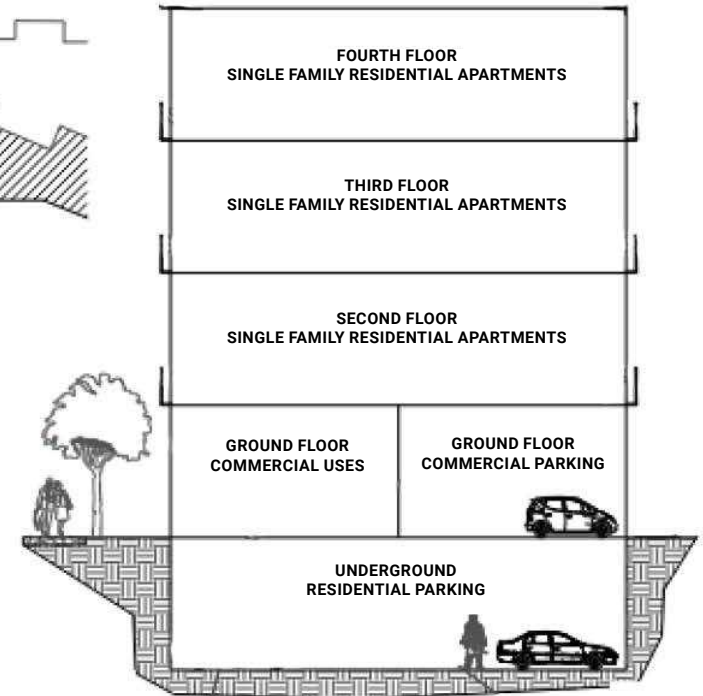
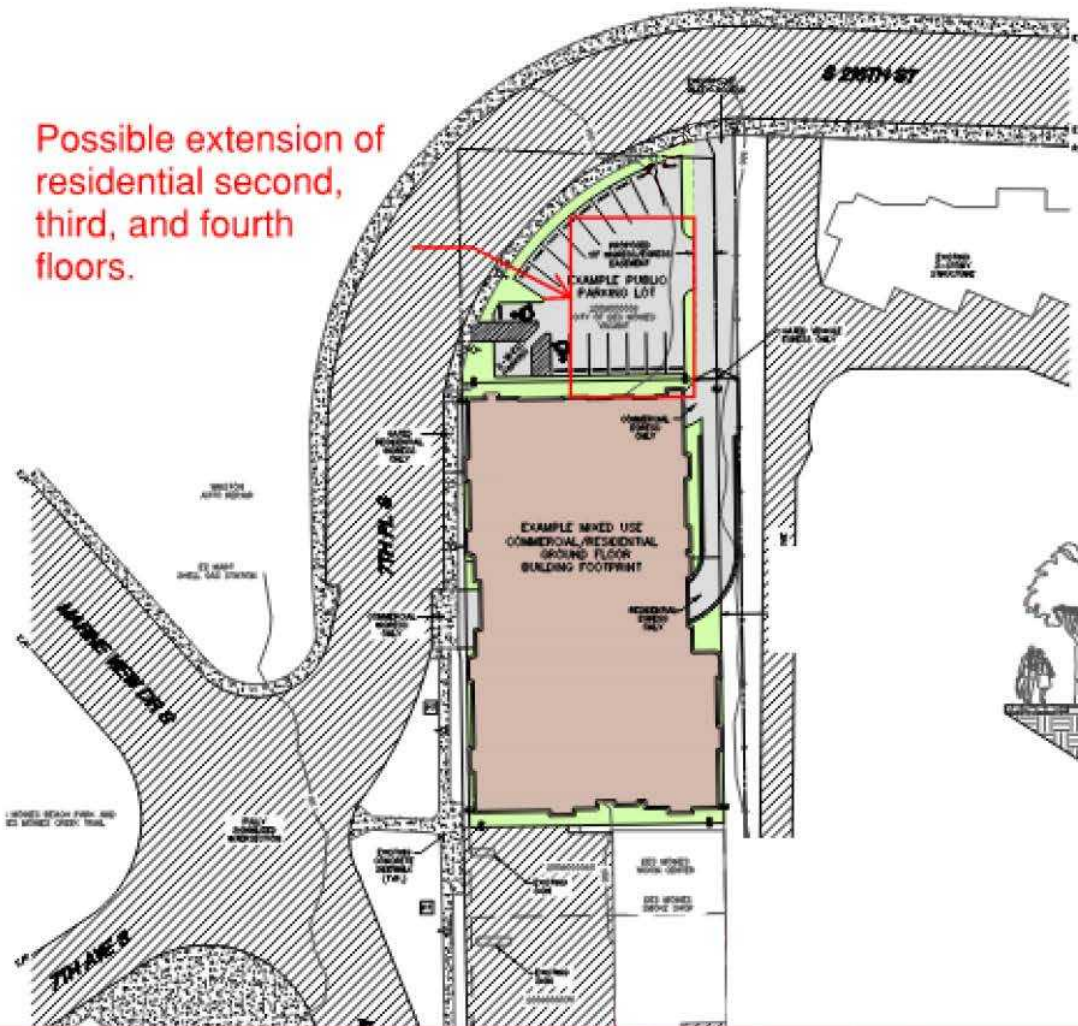
DES MOINES, WA is a waterfront community located at the midway point between Seattle and Tacoma. The fishing piers and boardwalk are premiere places for residents and visitors to stroll with the Olympic Mountains in the backdrop. The community plays home to Highline College with over 16,000 students and 550 employees. Des Moines offers housing opportunities for every income level and is continually growing with new business and development opportunities.



NORTH LOT & SOUTH LOT CONCEPTUAL SITE PLAN

The combined sites can support up to 83 residential units.

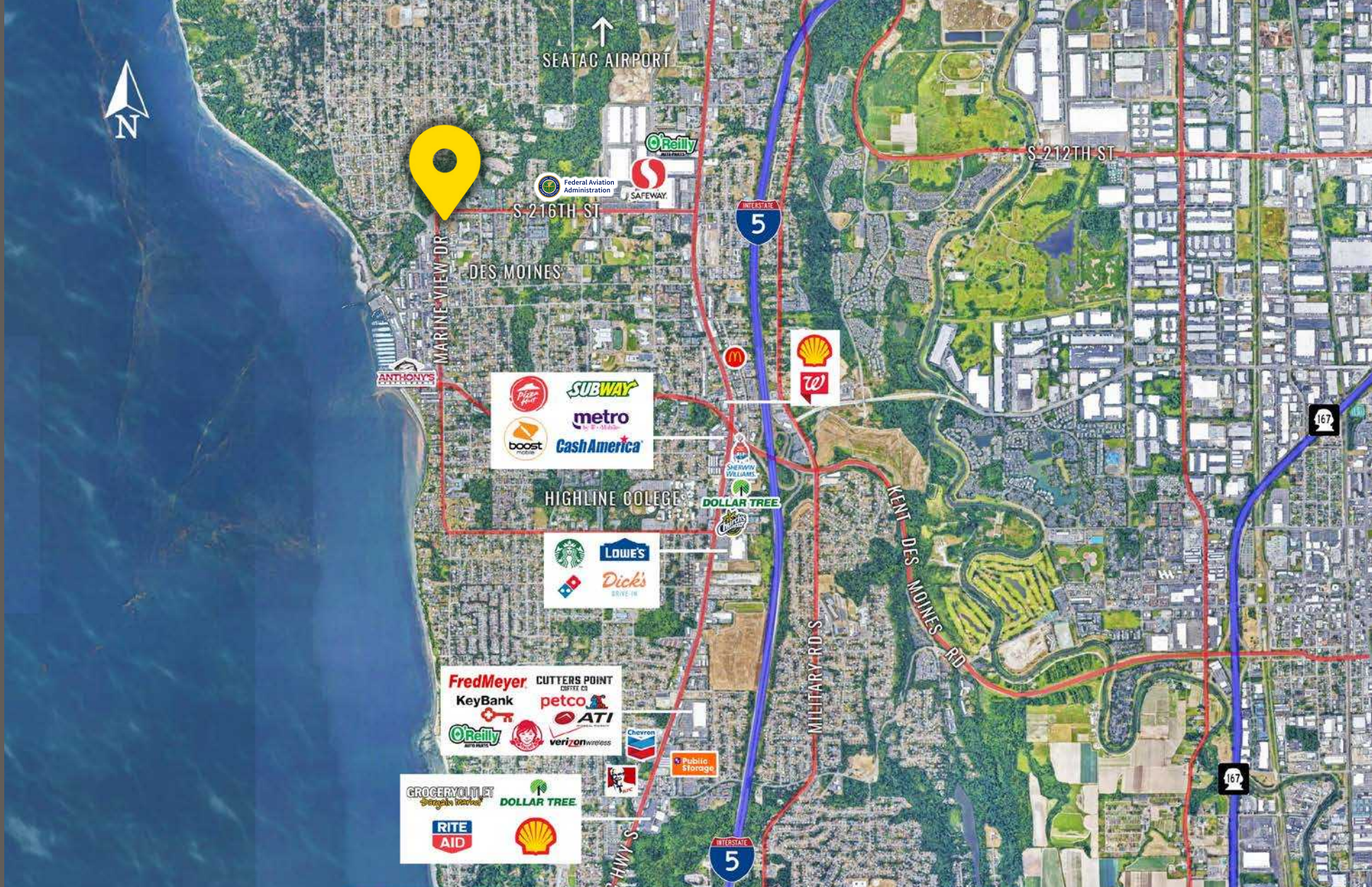
Possible extension of residential second, third, and fourth floors.



**MIXED USE
COMMERCIAL / RESIDENTIAL
EXAMPLE USES BY FLOOR
ELEVATION VIEW N.T.S.**

SITE PLAN

LOCATION DETAILS



Moments from Des Moines waterfront



7 Minutes to Interstate 5

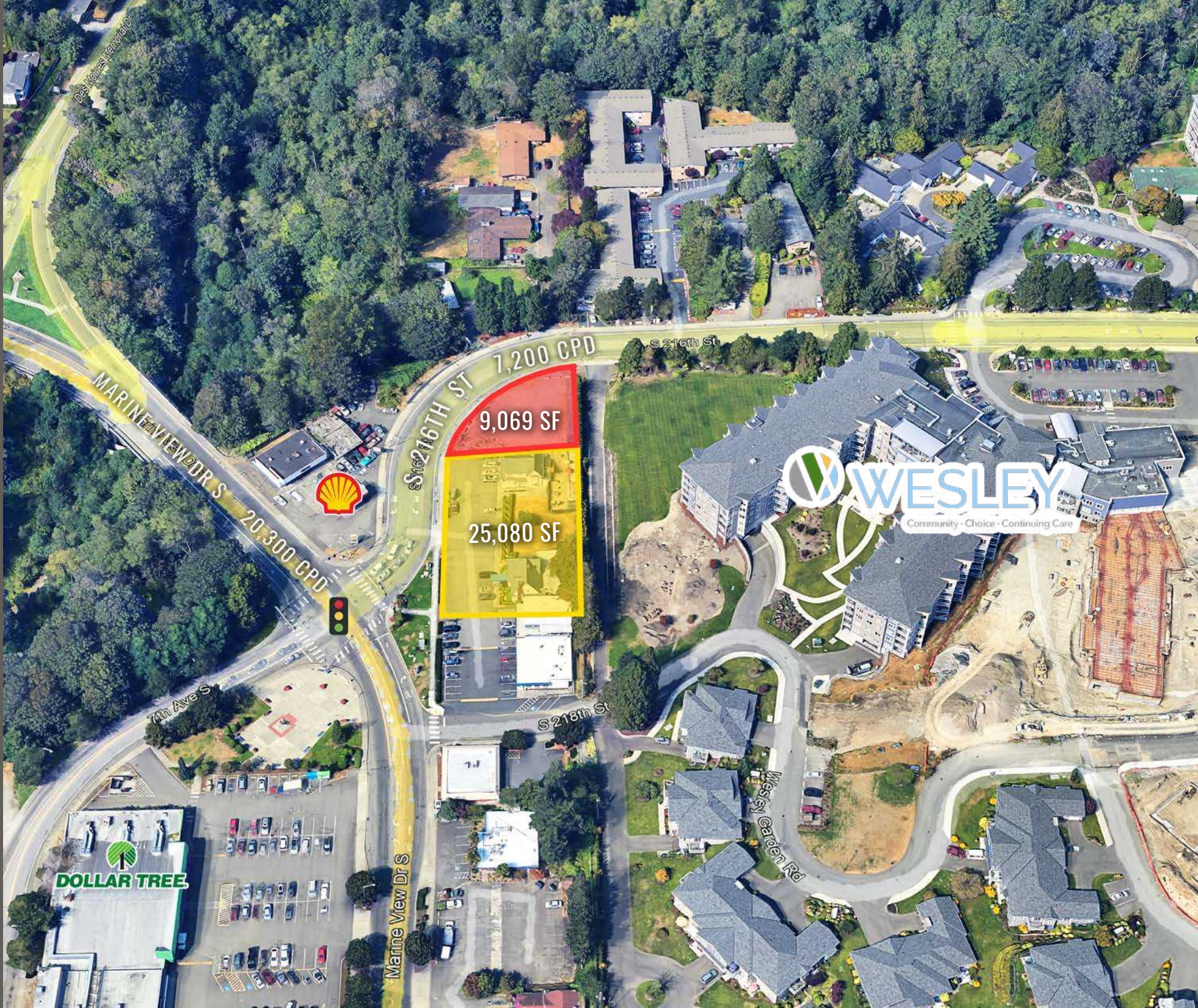


20,300 CPD Marine View Dr



7,200 CPD S 216th St

LOCATION AERIAL



DOLLAR TREE



MARINE VIEW DR S
20,300 CPD

S 216TH ST
7,200 CPD

9,069 SF

25,080 SF

7th Ave S

S 218th St

Marine View Dr S

Wesley Garden Rd

DeVries Memorial Dr

S 216th St

TACOMA | KIRKLAND | PORTLAND



RELATIONSHIP FOCUSED. RESULTS DRIVEN.

ELIJAH PIPER

253.284.3633
epiper@firstwesternproperties.com

TIM WEBER

253.471.5502
tweber@firstwesternproperties.com



First Western Properties—Tacoma Inc. | 253.472.0404
6402 Tacoma Mall Blvd, Tacoma, WA 98409 | fwp-inc.com

© First Western Properties, Inc. DISCLAIMER: The above information has been secured from sources believed to be reliable, however, no representations are made to its accuracy. Prospective tenants or buyers should consult their professional advisors and conduct their own independent investigation. Properties are subject to change in price and/or availability without notice.