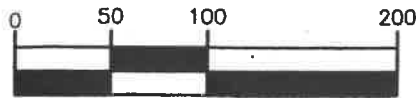


GRAPHIC SCALE



1 inch = 100 ft.

NOTES:

AREA INFORMATION IS CALCULATED FROM RECORD DATA PER RECORD OF SURVEY FILED UNDER SKAGIT COUNTY AUDITOR'S FILE NO. 200210230123.

TOTAL GROSS AREA OF PARCEL "E" INCLUDING ROAD, WETLANDS, & TRAILS: 704,192± S.F./16.17± ACRES

PREVIOUS DEDICATIONS

ROADS: 0.98± ACRES
 PUMP STATION EASEMENT: 0.05± ACRES
 TOTAL: 1.03± ACRES
 TOTAL PERCENTAGE OF PREVIOUS SITE DEDICATION: 6.4±%

PROPOSED DEDICATIONS

WETLANDS & WETLAND BUFFER: 3.08± ACRES
 TRAIL EASEMENT OF SHORELINE: 1.13± ACRES
 TOTAL: 4.21± ACRES
 TOTAL PERCENTAGE OF PROPOSED SITE DEDICATION: 26.0±%

TOTAL PERCENTAGE OF SITE DEDICATION: 32.4±%

NORTH LINE OF SHORELINE TRACT NO. 1 AS PER R.O.S. A.F.#200210230123 LENGTH=1371'±

SEWER/PUMP STATION EASEMENT AREA = 2321±S.F./0.05± ACRES

TRAIL AREA=49,234± S.F./1.13± ACRES

WETLAND & WETLAND BUFFER AREA = 134,178± S.F./3.08± ACRES

EXISTING WETLAND

ROAD AREA: 42,689± S.F./0.98± ACRES

EAST AREA: 256,262 S.F./5.883 ACRES

100' WETLAND BUFFER LINE

WEST AREA: 249,199 S.F./5.721 ACRES



1408 North Garden Street
 Bellingham, WA 98225

t: 360.650.1408
 f: 360.650.1401

FREELAND & ASSOCIATES

DESIGNED BY

DRAWN BY HAF

CHECKED BY

CLIENT

LEEWARD SUBDIVISION PARTNERS, LLC

PROJECT LOCATION

ANACORTES, WASHINGTON

SHEET CONTENTS

LEEWARD AT SHIP HARBOR
 LAND DEDICATION
 EXHIBIT

DWG #

06042SP2

JOB #

06042

DATE

04-18-07

SHEET

1