

For Sale

Ascent Commons

623 N 14th Ave | Caldwell, ID 83605

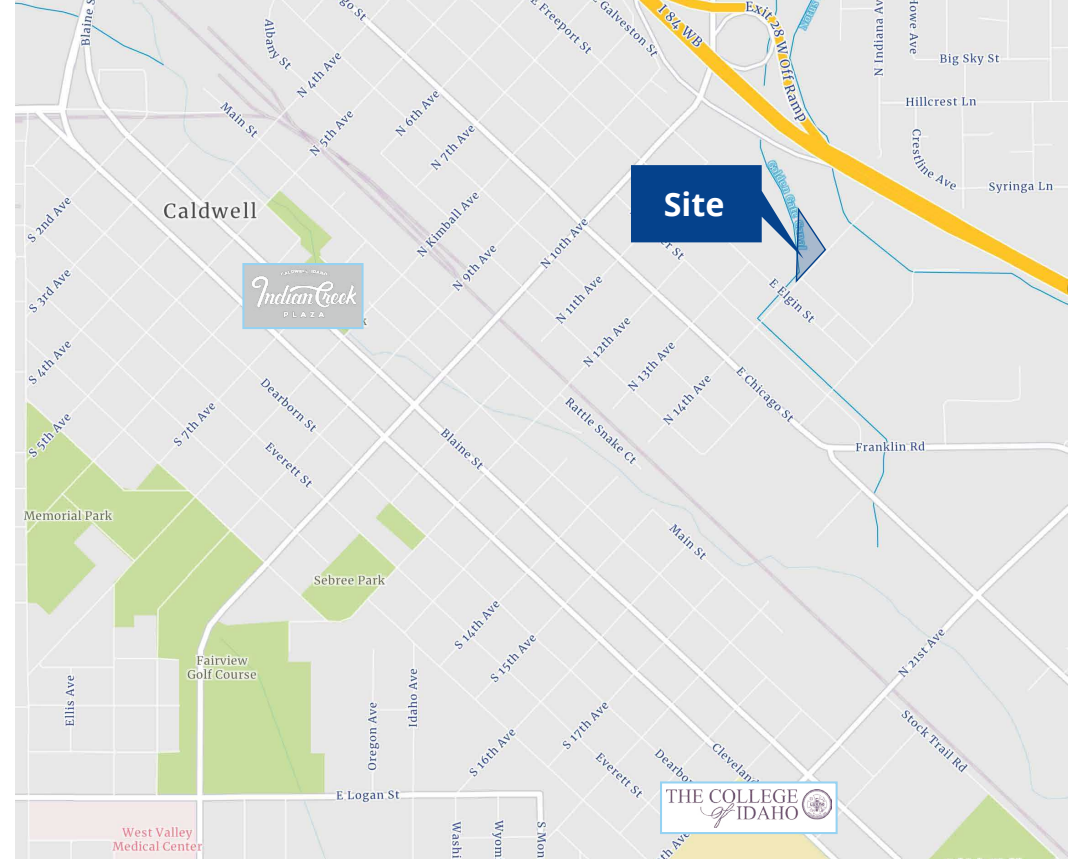
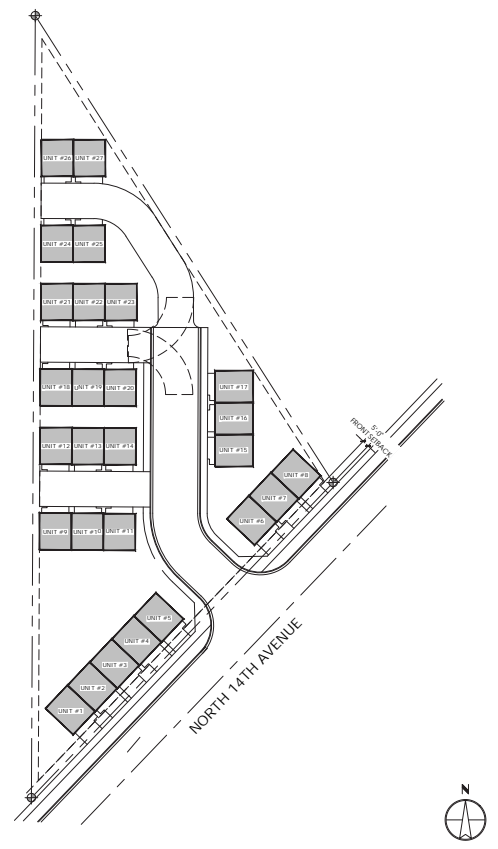
Connor Cadwell
208 472 2867
connor.cadwell@colliers.com

Jimmy Roumanis
208 472 2840
jimmy.roumanis@colliers.com

Property Overview

Property Type	Bare land
Land Size	1.455 acres
Location	623 N 14 th Ave
Parcel #	R3508900000
Zoning	Traditional Neighborhood (TN)

Conceptual Site Plan



Key Highlights

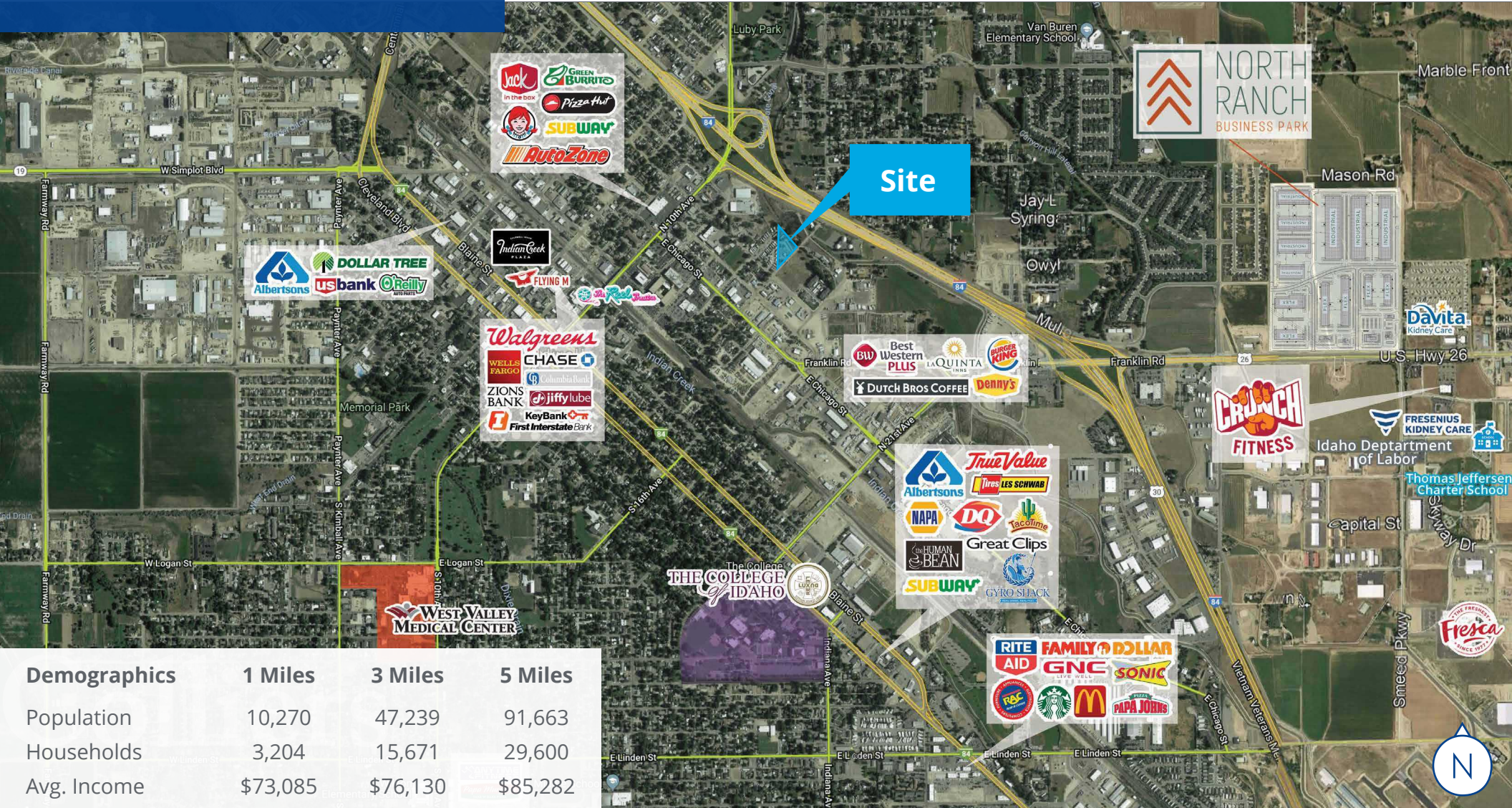
- Development opportunity within close proximity to Downtown Caldwell
- 5 minutes from College of Idaho campus & Downtown Caldwell/Indian Creek Plaza
- Traditional Neighborhood Zoning (TN). Allows for 5-20 units per gross acre
- Property has an approved PUD as well as a conceptual site plan for 27 units
- Caldwell School District

Price \$950,000

Location

 [Google Map](#)

 [Street View](#)



Demographics	1 Miles	3 Miles	5 Miles
Population	10,270	47,239	91,663
Households	3,204	15,671	29,600
Avg. Income	\$73,085	\$76,130	\$85,282



755 West Front Street, Suite 300
 Boise, Idaho 83702
 208 345 9000
colliers.com/idaho

This document has been prepared by Colliers for advertising and general information only. Colliers makes no guarantees, representations or warranties of any kind, expressed or implied, regarding the information including, but not limited to, warranties of content, accuracy and reliability. Any interested party should undertake their own inquiries as to the accuracy of the information. Colliers excludes unequivocally all inferred or implied terms, conditions and warranties arising out of this document and excludes all liability for loss and damages arising there from. This publication is the copyrighted property of Colliers and / or its licensor(s). © 2023. All rights reserved. This communication is not intended to cause or induce breach of an existing listing agreement. Colliers Treasure Valley, LLC.