

# 1095 SE Bishop Blvd, Pullman



## Property Description

For sale in Pullman, Washington - 8,000 SF building perfect for an expanding office/retail user or Investor. The footprint Includes a brand-new dental office, (4,940 SF) renovated in 2019 with \$2 million in improvements. There's an additional 3,125 square feet still available in shell condition, ready for customization. This could be great for a larger tenant or a second business.

New 4x8 digital reader board will help bring your business alive!

The property is on a busy road, sharing access with a major anchor in the Pullman market. All of this is set on 1.34 acres and available for a purchase price of \$3 million.

Don't miss this opportunity to invest in a versatile space with a lot of potential in a growing Market.

Contact Listing Brokers for more detail showing access.

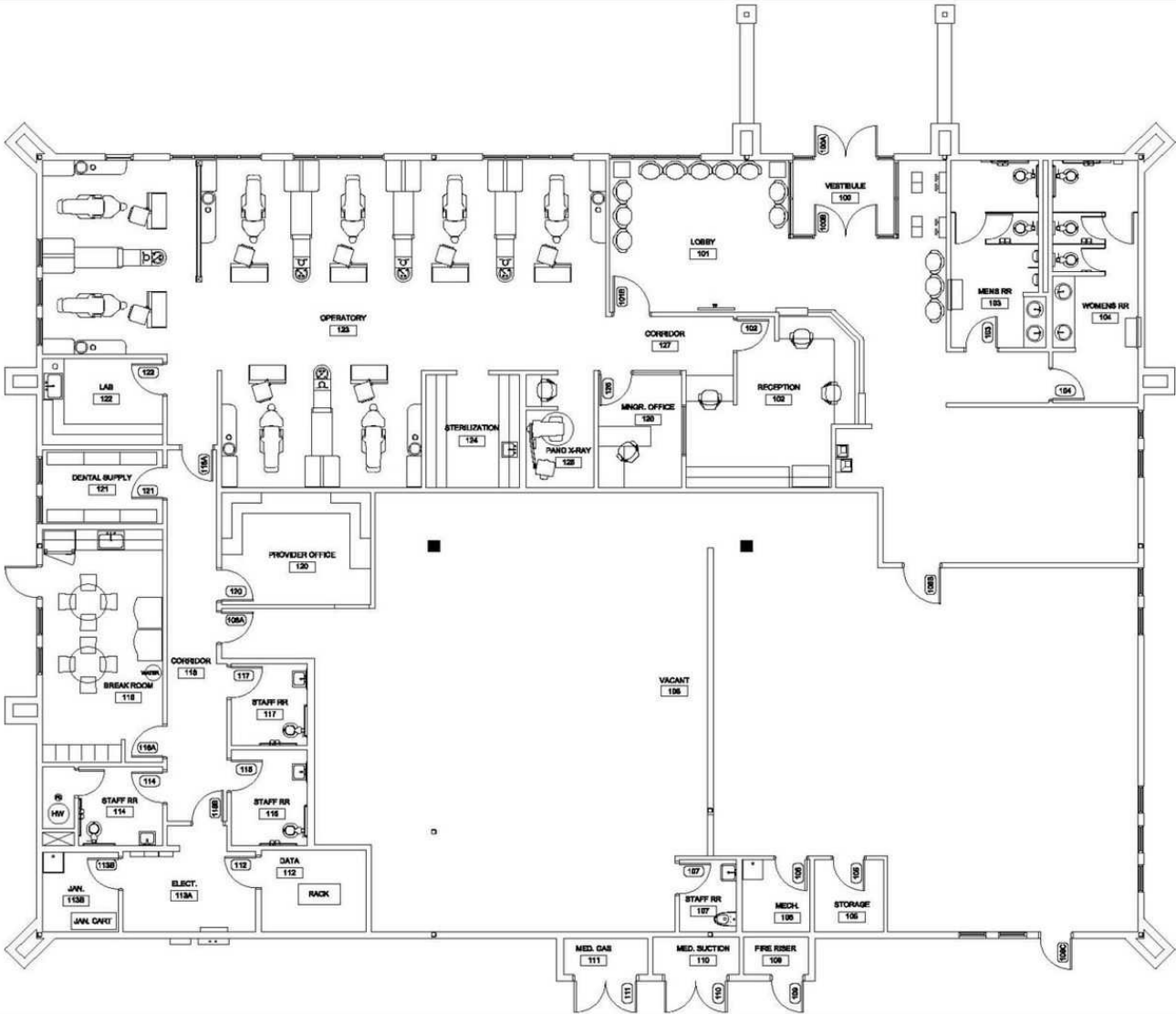
## Offering Summary

<b>Sale Price:</b>	\$3,000,000
<b>Number of Units:</b>	1
<b>Lot Size:</b>	1.39 Acres
<b>Building Size:</b>	8,065 SF

# Additional Photos



# Floor Plans



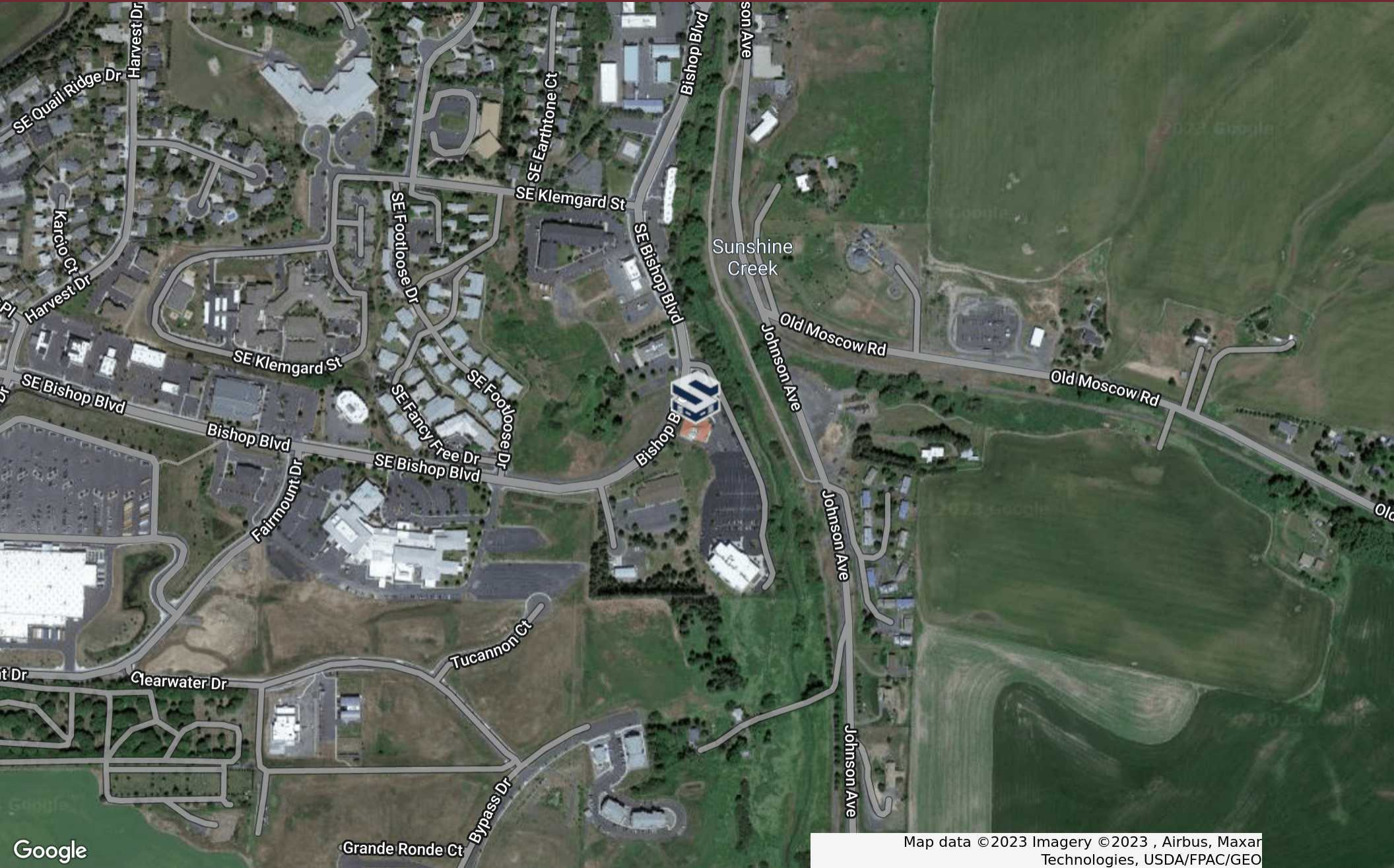
**Yakima Valley  
Farm Workers Clinic**  
130 - Pullman, Unify Family Dental  
1095 SE Bishop Blvd, Pullman, WA 99163

8065 SF Total  
4,940 SF Finished

**Floor Plan**  
Drawing Not To Scale

Updated: 9/16/2019

# Location Map



Map data ©2023 Imagery ©2023 , Airbus, Maxar Technologies, USDA/FPAC/GEO