



 THE
REMLINGER
GROUP

STEEL LAKE PLAZA
Federal Way, WA

This document has been prepared by The Remlinger Group for advertising and general information only. The information contained herein has been obtained from reliable sources. However, any prospective buyer or tenant should verify all information relating to this property and contained herein.

www.RemlingerGroup.com

Property Overview



15,000 + ADT



Military Rd S

[View all Permitted Uses](#)

[BN ZONING
PERMITTED USE TABLE
CLICK FOR LINK](#)

Property:	Steel Lake Plaza
Address:	29020-29026 Military Rd, Federal Way, WA
Parcel Numbers:	042104-9086 & 042104-9039 (King County)
Land Area:	1.68 Acres (73,022 SF)
Zoning:	BN (Neighborhood Business)
Permitted Uses:	Office, Retail, Breweries, Vehicle Service Station, Multifamily, Senior Housing





Parcel Number: 042104-9039
Land Area: 0.58 Acres (25,422 SF)

Parcel Number: 042104-9086
Land Area: 1.09 Acres (47,600 SF)

15,000 + ADT 

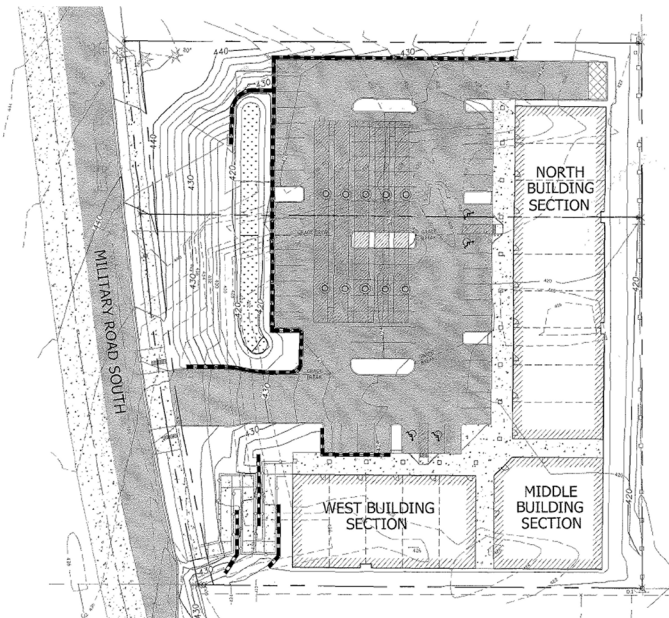
Steel Lake Plaza



PREVIOUS PLANS & STUDIES

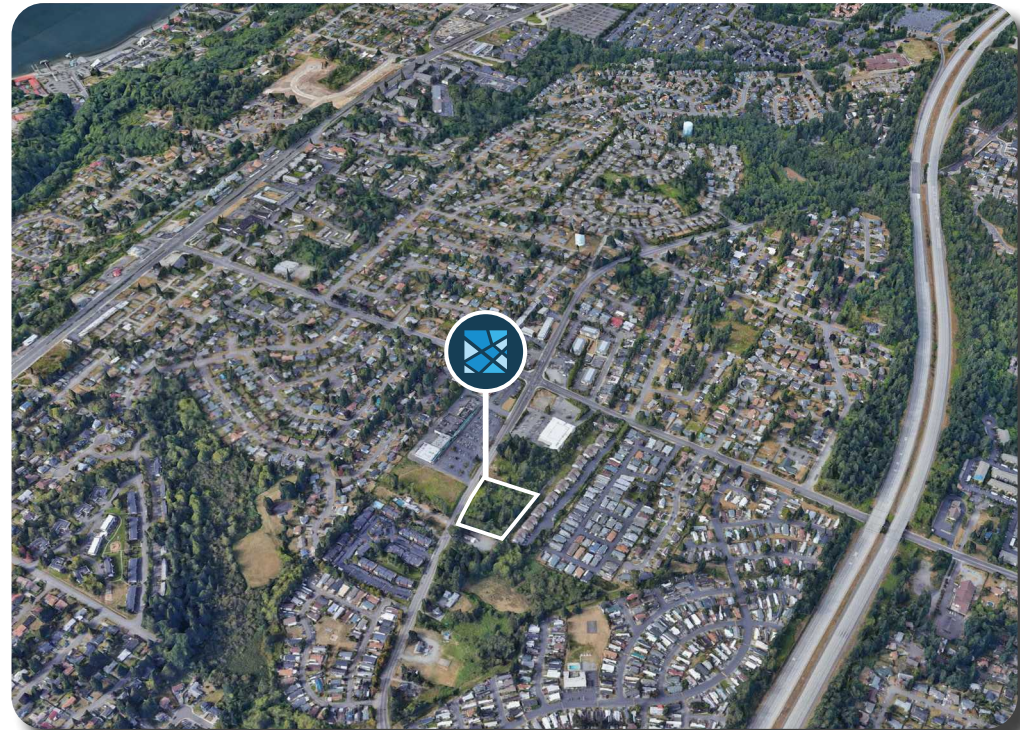
The site was previously approved for retail development, ownership has several plans and reports available to assist with future projects including:

- Civil Plan Set
- Geotechnical Design Report
- Technical Information Report
- Environmental Checklist (SEPA DNS Issued)
- Surveys



NEIGHBORHOOD BUSINESS ZONE

Neighborhood Business areas are intended to provide convenient goods and services at a pedestrian and neighborhood scale close to adjacent residential uses. Commercial & Residential mixed-use developments are encouraged. Developments combining residential and commercial uses provide a convenient living environment within these areas.



Demographics



MARKET
AREA

5 Mile Radius



DAYTIME
POPULATION

102,093



POPULATION

242,183



HOUSEHOLDS

94,691



AVG. HOUSEHOLD
INCOME

\$94,858



This document has been prepared by The Remlinger Group for advertising and general information only. The information contained herein has been obtained from reliable sources. However, any prospective buyer or tenant should verify all information relating to this property and contained herein.

www.RemlingerGroup.com

EXCLUSIVELY OFFERED BY



Drake Remlinger

Founder/CEO

Drake@RemlingerGroup.com

(425) 330-1160



10422 NE 37th Cir, Suite 100
Kirkland, WA 98033



www.RemlingerGroup.com



(425) 998-1619



Info@RemlingerGroup.com

www.RemlingerGroup.com/properties/steel-lake-plaza

www.RemlingerGroup.com

