

# Mottman Professional Center Owner User Opportunity



THE  
REMLINGER  
GROUP

1625 Mottman Rd SW  
Tumwater, WA

This document has been prepared by The Remlinger Group for advertising and general information only. The information contained herein has been obtained from reliable sources. However, any prospective buyer or tenant should verify all information relating to this property and contained herein.

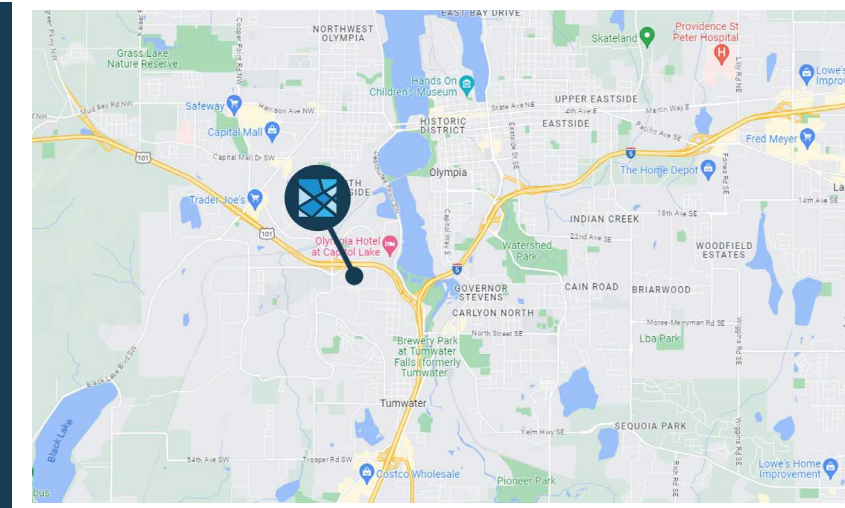
[www.RemlingerGroup.com](http://www.RemlingerGroup.com)



# Property Overview



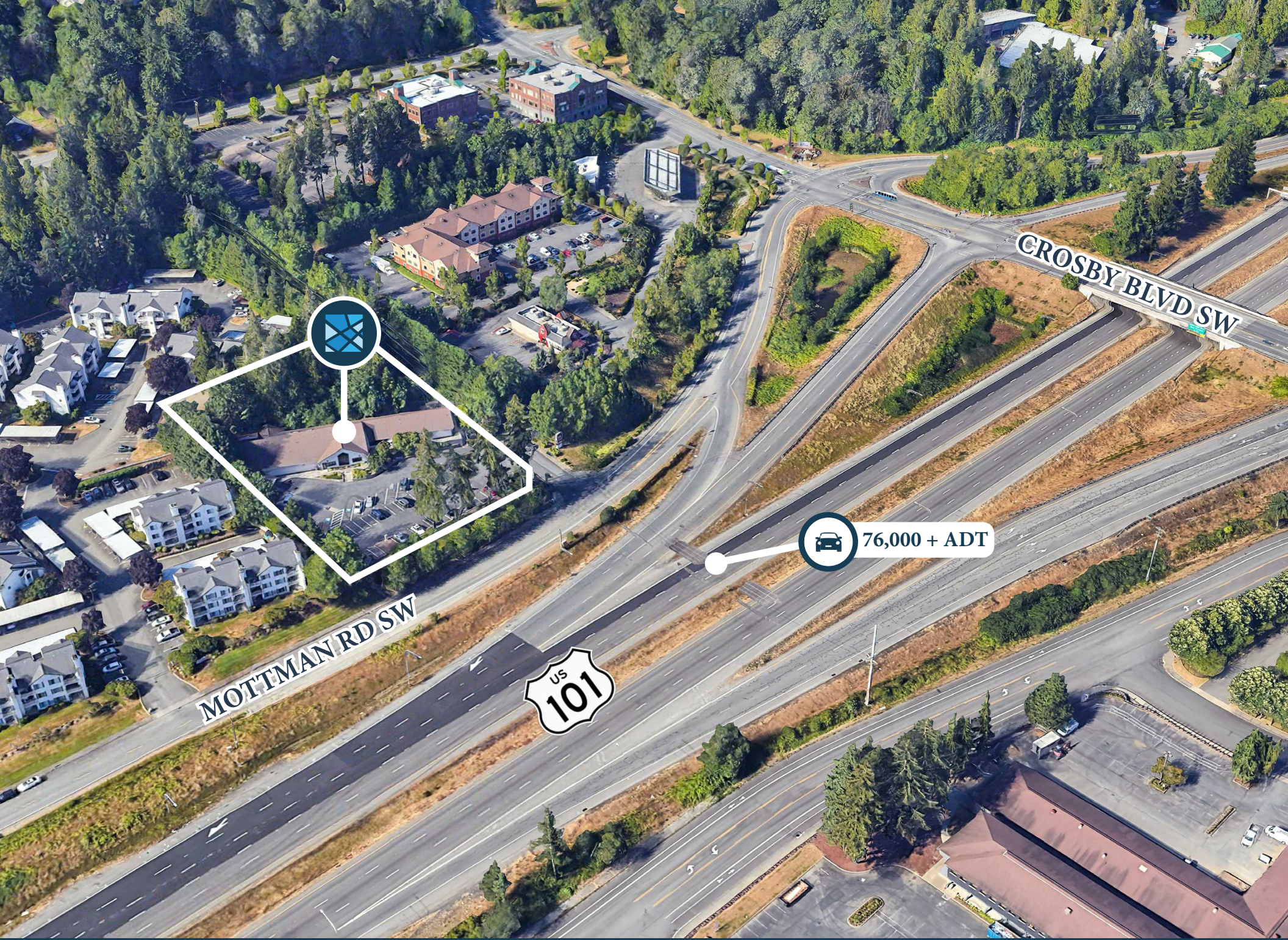
<b>Property:</b>	Northwest School of Innovative Learning
<b>Address:</b>	1625 Mottman Rd SW, Tumwater, WA
<b>Parcel Number:</b>	7340-46-01200, Thurston County
<b>Building Size:</b>	9,654 Square Feet
<b>Lot Size:</b>	1.48 Acres (64,400 SF)
<b>Parking:</b>	45 Parking Stalls (4.7/1,000 SF)
<b>Zoning:</b>	GC (General Commercial), Tumwater



This document has been prepared by The Remlinger Group for advertising and general information only. The information contained herein has been obtained from reliable sources. However, any prospective buyer or tenant should verify all information relating to this property and contained herein.

[www.RemlingerGroup.com](http://www.RemlingerGroup.com)





MOTTMAN RD SW

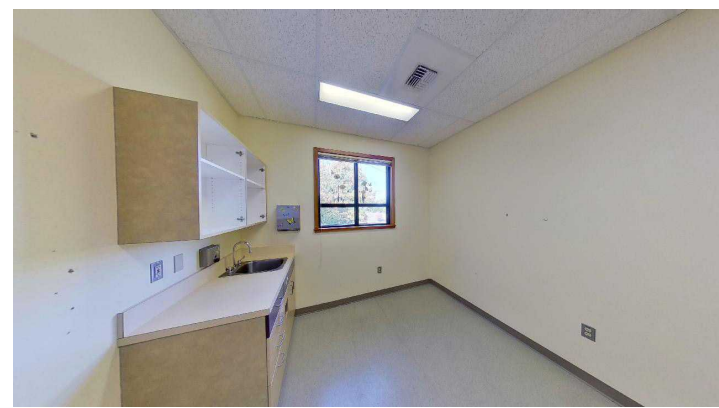
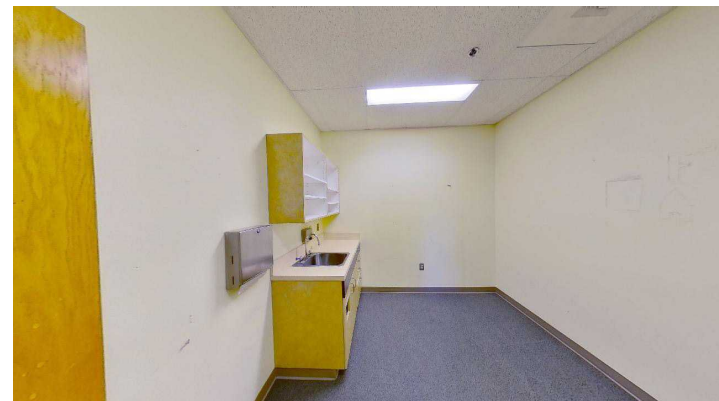


CROSBY BLVD SW

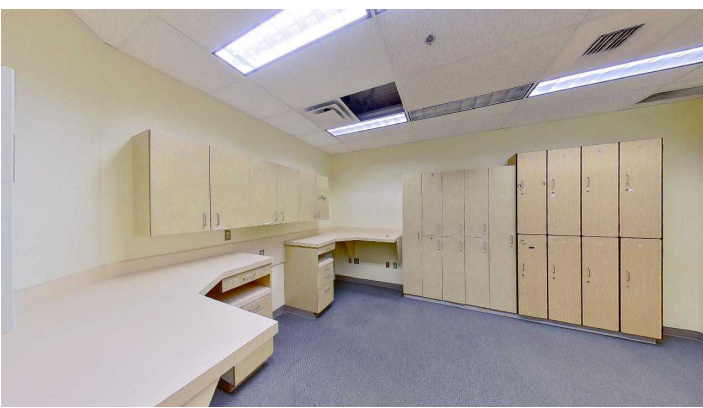
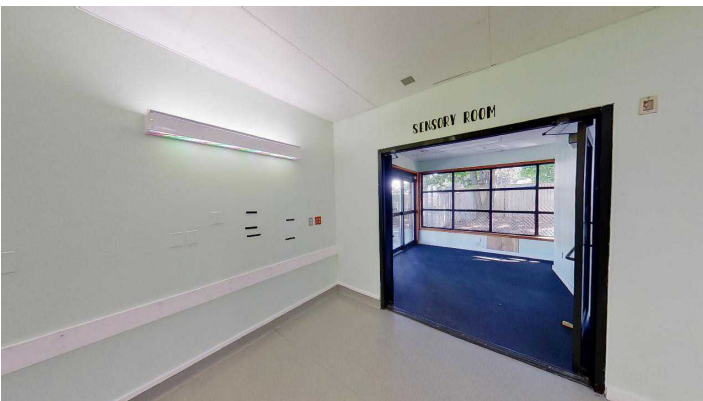
 76,000 + ADT















Contact Our Team Today!

**James Betzer**

Senior Vice President

[James@RemlingerGroup.com](mailto:James@RemlingerGroup.com)

(206) 605-3568



10422 NE 37th Cir, Suite 100  
Kirkland, WA 98033



[www.RemlingerGroup.com](http://www.RemlingerGroup.com)



(425) 998-1619



[Info@RemlingerGroup.com](mailto:Info@RemlingerGroup.com)



[www.RemlingerGroup.com/properties/tumwater-medical](http://www.RemlingerGroup.com/properties/tumwater-medical)

[www.RemlingerGroup.com](http://www.RemlingerGroup.com)