

FOR SALE

SHORELINE MIXED USE PROPERTY

16610 AURORA AVENUE N, SHORELINE, WA 98133



OFFERING SUMMARY

Sale Price:	\$2,995,000
Available SF:	2,816 SF
Lot Size:	22,344 SF
Zoning:	MB
Market:	Shoreline
Price / SF:	\$134.04

PROPERTY OVERVIEW

Large lot with approximately 120' of frontage on Aurora Avenue North with additional access from the utility road to the east. 2 buildings: 5,632 SF Retail/Warehouse building with monument signage and ample parking facing Aurora Ave and a warehouse of 3,300 SF, currently used as an RV service facility. Great visibility and easy access.

PROPERTY HIGHLIGHTS

- Development Site or Owner/User Property
- 22,344 SF of Land with approx. 120' of Aurora Frontage
- 5,632 SF Retail/Warehouse & 3,300 SF Warehouse
- Monument Signage
- Zoned MB



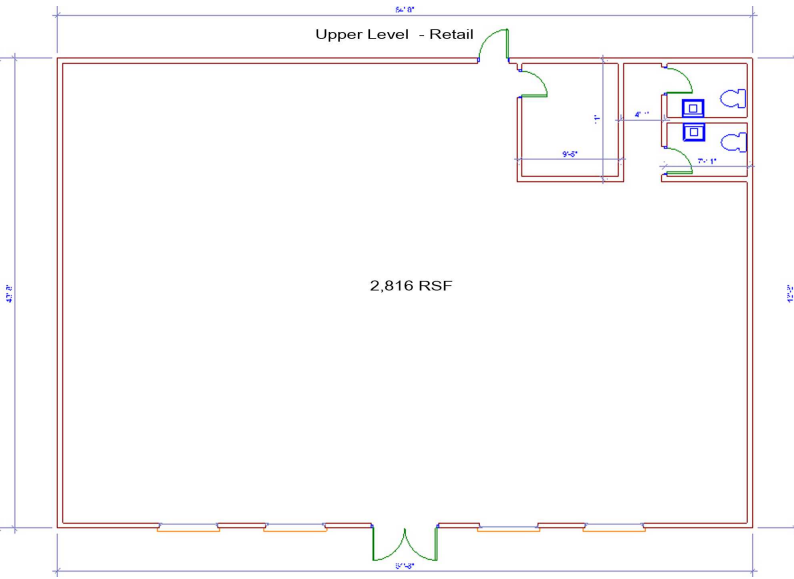
DAVID HALL, CCIM, CPM CANDIDATE
206.381.3883 x107
david@corecommercialproperties.com

CORE Commercial Properties, Inc. | 10 East Allison Street | Seattle, WA 98102 | 206.381.3800 | corecommercialproperties.com

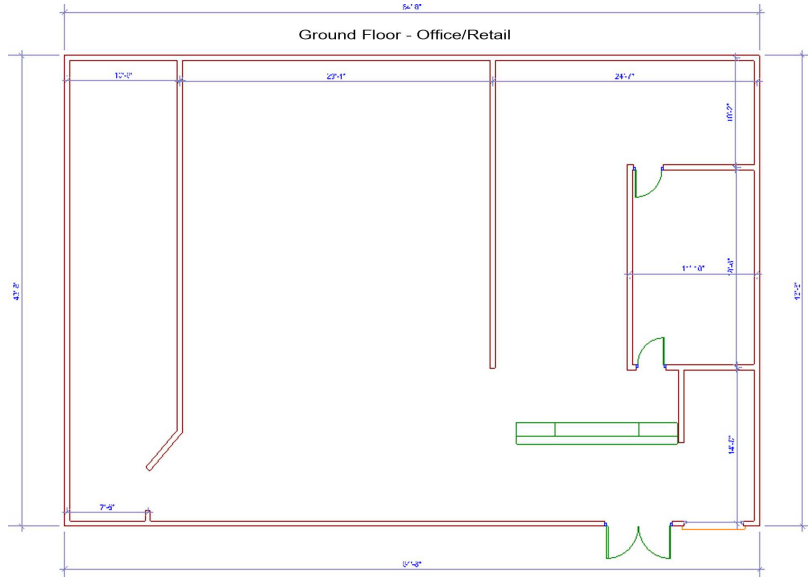
The information herein comes from sources deemed reliable but has not been independently verified by CORE Commercial Properties, Inc. No warranty or representation, expressed or implied is made as to the accuracy of the information herein, and it is submitted subject to errors, omissions, change of price, rental, or other conditions, withdrawal without notice, and to any special listing conditions, imposed by our principals.

SHORELINE MIXED USE PROPERTY

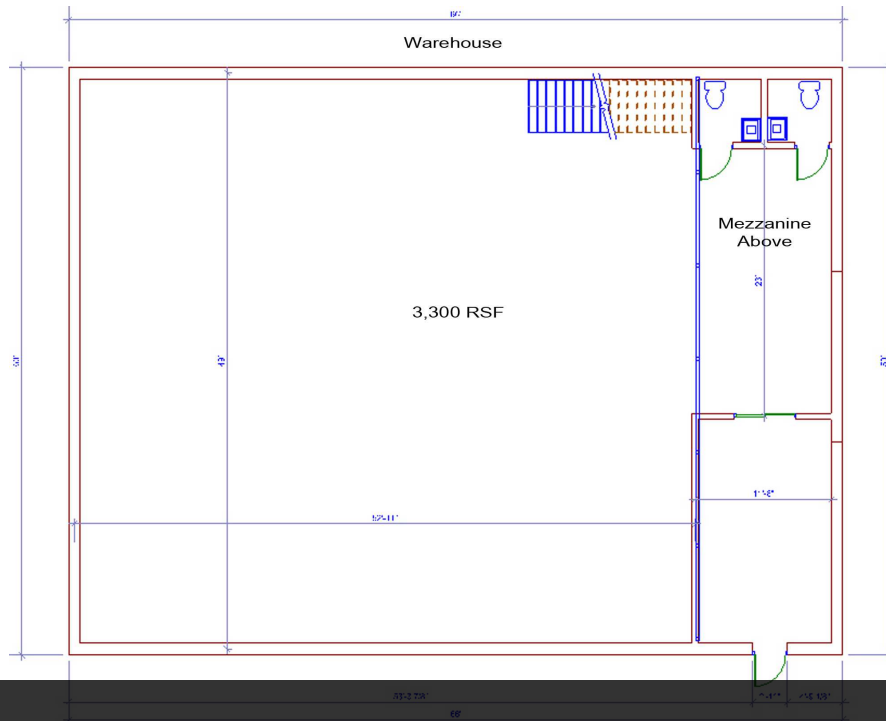
16610 AURORA AVENUE N, SHORELINE, WA 98133



Main Building - Upper Level Retail



Main Building - Lower Level Office/Retail



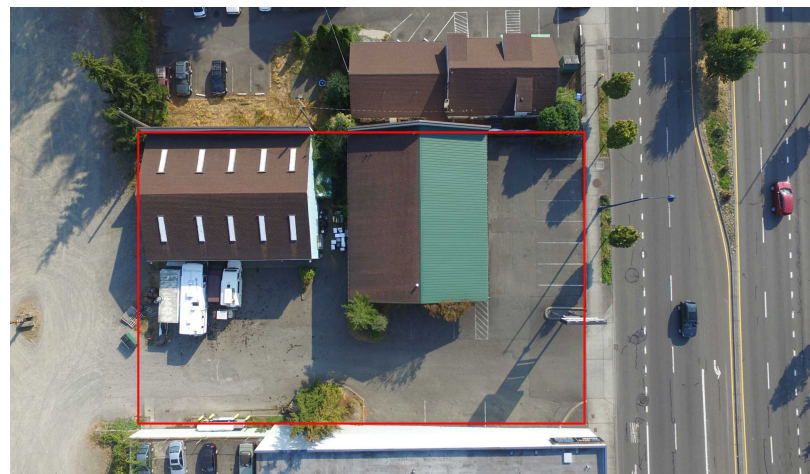
Warehouse Building



DAVID HALL, CCIM, CPM CANDIDATE
 206.381.3883 x107
 david@corecommercialproperties.com

SHORELINE MIXED USE PROPERTY

16610 AURORA AVENUE N, SHORELINE, WA 98133



DAVID HALL, CCIM, CPM CANDIDATE
206.381.3883 x107
david@corecommercialproperties.com

SHORELINE MIXED USE PROPERTY

16610 AURORA AVENUE N, SHORELINE, WA 98133



DAVID HALL, CCIM, CPM CANDIDATE
206.381.3883 x107
david@corecommercialproperties.com

SHORELINE MIXED USE PROPERTY

16610 AURORA AVENUE N, SHORELINE, WA 98133



LEASE INFORMATION

Lease Type:	NNN
Total Space:	2,816 SF

Lease Term:	Negotiable
Lease Rate:	\$25.00 SF/yr

AVAILABLE SPACES

SUITE

DESCRIPTION

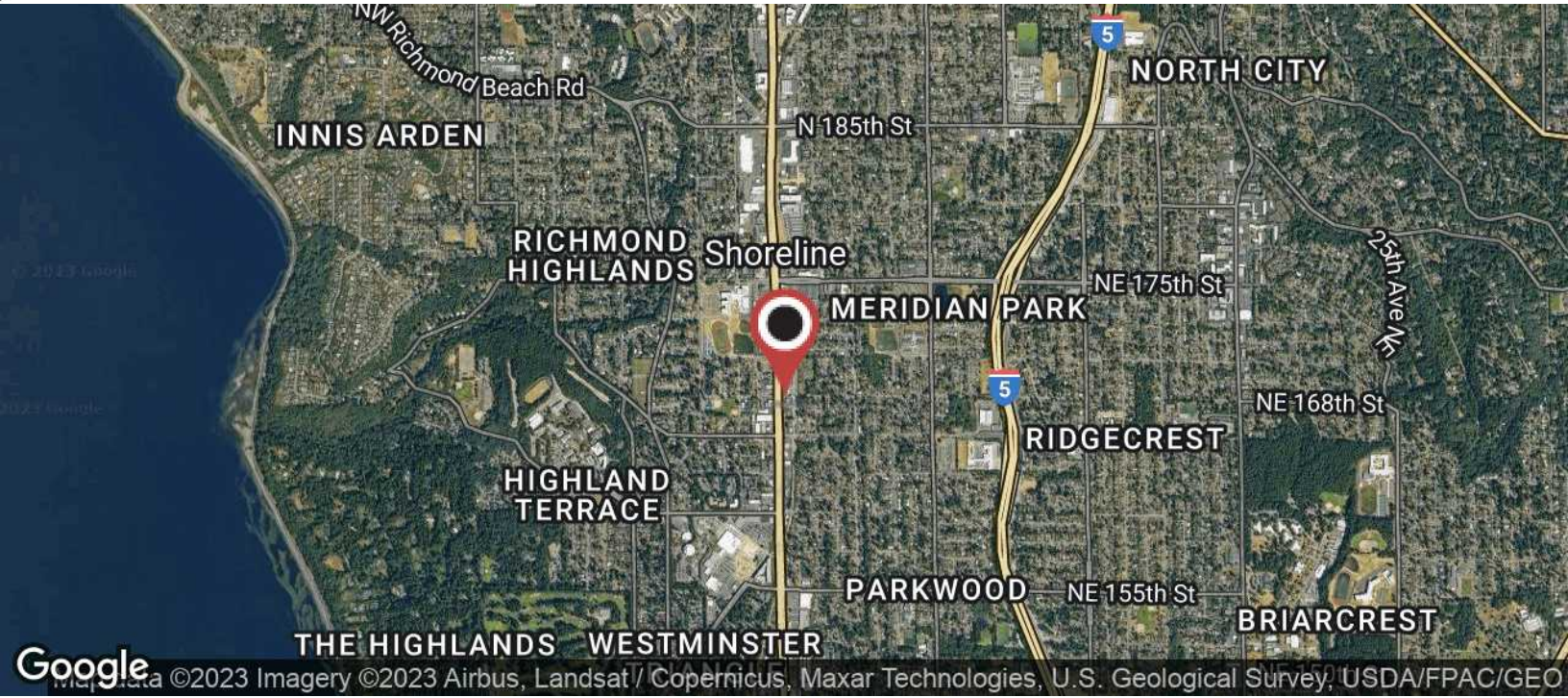
Shoreline Retail On Aurora 2,816 SF of mostly open space with ample parking, lots of glass and monument signage.



DAVID HALL, CCIM, CPM CANDIDATE
206.381.3883 x107
david@corecommercialproperties.com

SHORELINE MIXED USE PROPERTY

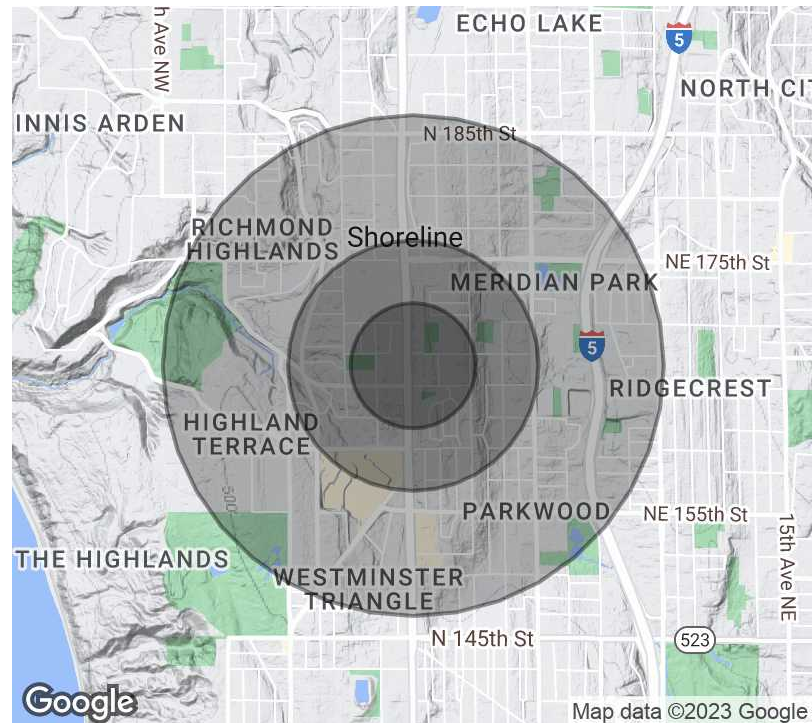
16610 AURORA AVENUE N, SHORELINE, WA 98133



POPULATION	0.25 MILES	0.5 MILES	1 MILE
Total Population	910	3,831	15,226
Average Age	44.8	43.5	41.9
Average Age (Male)	42.9	40.1	40.1
Average Age (Female)	45.0	46.7	44.4

HOUSEHOLDS & INCOME	0.25 MILES	0.5 MILES	1 MILE
Total Households	387	1,570	5,874
# of Persons per HH	2.4	2.4	2.6
Average HH Income	\$106,177	\$105,535	\$107,911
Average House Value	\$585,707	\$562,106	\$582,851

* Demographic data derived from 2020 ACS - US Census



DAVID HALL, CCIM, CPM CANDIDATE
 206.381.3883 x107
 david@corecommercialproperties.com